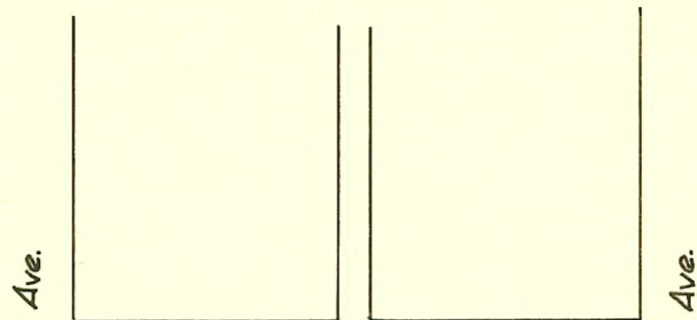
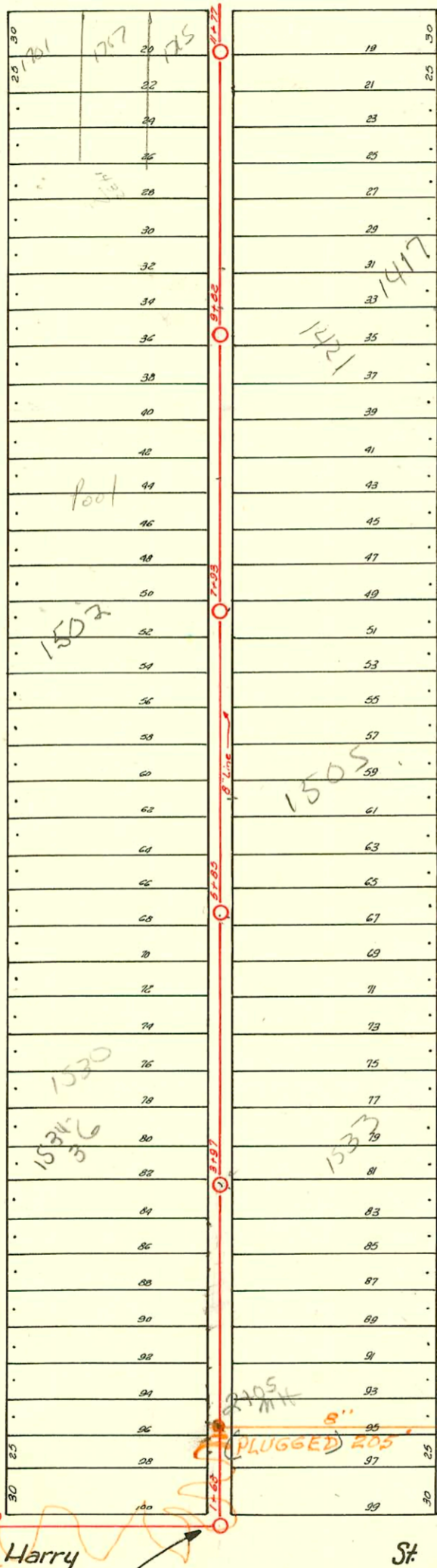


Extra
MH's
6' S of 11+77
Show up on TV
1/13/26

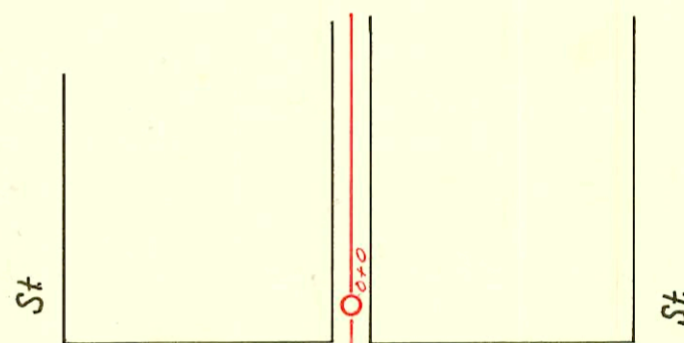
LAT. 2 - S.S. NO. 20
1923



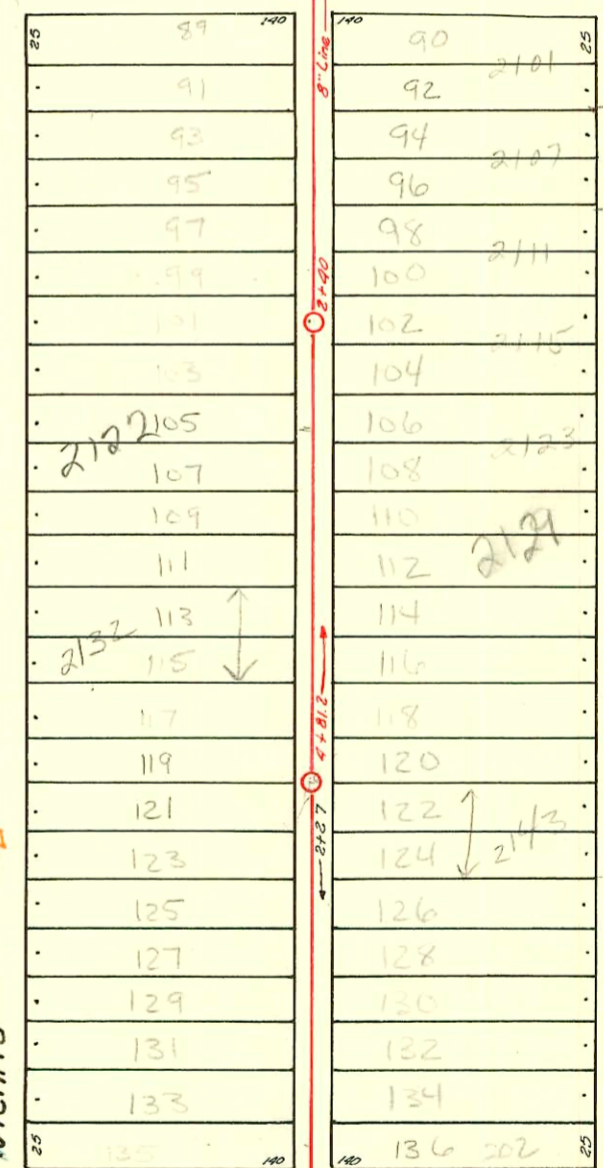
Park Ave.



TRAP AREA



Clark St



LAT. 13 - DIST. C
S.S. NO. 20
1926
SNYDER & MEILERT

Hydraulic

PLUGGED Harry

8x24 MH
MH constructed may be
by maint. Dept with
4" trap w edge MH
No down will be app.
to 10' MH 5' 23-79 6PB

Kansas
36" 134
36" 134
36" 88"

Note: 4" Y must be trapped with 6" trap.

CHANGES BY STATE HWY DEPT
BOOKED 8-6-77 AS BUILT PLAN

LAT. 6 - DIST. B
S.S. NO. 20
1927
CITY FORCES

2004-00126 114104 1502 S Hydraulic- G+G Mech- temp slo of front house 8' out from foundation

CONSTRUCTION RECORD

SERVICE RECORD

STATION	ELEVATION		Depth	MANHOLE	4-INCH "Y" BRANCHES		No. of Permit		House Number		DATE OF PERMITS	
	Ground	Grade			North West	South East	North West	South East	North West	South East	North West	South East
0+0	100.78	93.11	7.67	0+0 ^{In Hydraulic}	0+52 N. +82 N.							
1+0	102.54	93.31	9.23	1+63		1+83 E.						
2+0	102.27	93.51	8.76		2+02 W. +30 +58 +85	2+04.5 +32.5 +60.5 +87.5	# 41034 522 # 683 # 623	1552 S Hyd.	1521 S Kansas		7-5-73 6-21-26	
3+0	101.60	93.71	7.89		3+13.5 +38 +66	3+16 +40.5 +68.5	# 2204 # 521	1544 S Hyd.	1547 S Kansas	4-9-40	6-21-26	
4+0	102.03	93.91	8.12	3+97	3+89 +47 4" SCH 40 +14	3+91.5 +49.5 +76.5	# 2736 # 513 # 3769 # 409 # 2001- 15 00900	1540 S Hyd. 1531 S Hyd. 1530 P S Hyd.	1545 S Kansas 1543 S Kansas 1531 S Kansas see below	10-5-40 10-20-41 9-11-51 4-16-01 1-10-28	6-18-26 6-18-40 8-13-37	
5+0	100.88	94.21	6.67		5+02 +30.5 +59 +92	5+04.5 +33 +61.5 +94.5	# 5770 # 81 # 1039 # 1019 # 1492	1524 S Hyd. 1511 S Kansas 1514 S Hyd. 1520 S Hyd.	1525 S Kansas 1511 S Kansas	9-11-51	4-18-38 9-21-25	
6+0	100.11	94.41	5.70	5+85	6+09 +37 +64 +93	6+11.5 +39.5 +66.5 +95.5	# 1471 # 2853 # 1513 # 497	1509 S Hyd. 1503 S Hyd. 1501 S Kansas	1509 S Kansas 1505 S Kansas	10-9-23	1-29-20 9-11-29 3-25-41 6-8-26	
7+0	100.44	94.61	5.83		7+20 seal off +47 7+93	7+22.5 +49.5 +78.5	# 1471 # 2853 # 1513 # 497	1509 S Hyd. 1503 S Hyd. 1501 S Kansas	1503 S Kansas 1503 S Hyd. 1501 S Kansas	10-5-23 1-14-24 10-16-23	11-8-40 11-4-24	
8+0	103.21	94.81	8.40		8+03 +32 +59 +88	8+05.5 +34.5 +61.5 +90.5	# 264 # 1305 # 1104 # 556 # 861	1046 S Hyd. 1444 S Hyd. 1490 S Hyd. 1425 S Hyd.	1439 S Kansas 1427 S Kansas	3-23-28	9-17-29	
9+0	102.86	95.01	7.85	9+82	9+14.5 +43 +70 +98	9+17 +45.5 +72.5 +100.5	# 561 # 1558 # 2103 # 518 # 1103	1432 S Hyd. 1432 S Hyd. 1423 S Hyd.	1425 S Kansas 1417 S Kansas	10-22-23	9-18-50	
10+00	102.79	95.21	7.58		10+25 +59 +82	10+27.5 +56.5 +84.5	# 518 # 1103 # 511 # 974	1423 S Hyd. 1405 S Kansas 1403 S Kansas	1423 S Kansas 1405 S Kansas	7-22-47 7-24-23	8-8-27 6-18-26	
11+0	102.79	95.41	7.38		11+10 +37	11+12.5 +39.5	# 1079 # 678	1422 S Hyd. 1403 S Kansas	1403 S Kansas	5-12-24	9-4-25	
1+77	102.68	95.56	7.12	11+77	+65	+67.5					8-11-27	
0+0	102.49	97.02	5.47	0+0 ^{M.H. North of Clark}	0+07 +89.6	0+09.5 +92.1						
1+0	102.88	97.12	5.76		1+15.4 +41.4 +66.8 +92.7	1+17.9 +43.9 +69.3 +95.2	# 4 # 2075	2100 S Wichita 2106 S Wichita	2107 S Water	1-14-36 6-15-42	1-12-27	
2+0	103.25	97.22	6.03	2+40	2+18 +43.8 +69.3 +94.8	2+20.5 +46.3 +71.8 +97.3	# 378 # 3105 # 1780	2110 S Wichita 2116 S Wichita	2111 S Water 2115 S Water	6-26-31 2-8-41	6-14-26 4-8-26	
3+0	103.31	97.32	5.99		3+21 +46 +72.6 4" SCH 40 3+97.8	3+23.5 +48.5 +75.1 +100.3	# 1557 # 574 # 838 # 1942	2122 S Wichita 2128 S Wichita 2130 S Water 2132 S Wichita	2123 S Water 2129 S Water 2143 S Water	9-10-49 3-13-45 10-7-49	7-8-27 10-1-26	
4+0	102.94	97.42	5.52		4+23.8 +49.5	+26.3 +52	# 1943	2138 S Wichita	2139 S Water	10-7-49	4-13-27	
4+81.2	99.98	97.50	2.48	4+81.2	+73.5	+76	# 261					
0+0	97.19	95.35	1.84	0+0 ^{M.H. in D.V. Kinbaird}	0+31.5 +56.7 +82.3	0+29 +54.2 +79.8	# 3396 # 1424	2158 S Wichita	2024 Kinbaird 2015 S Water	6-16-23 2-13-47	5-26-52 5-31-27	
1+0	93.79	95.63	-1.84	0+0	+107.6 +32.9 +58.5	+105.1 +30.4 +56	# 2399 # 2400 # 1590	2152 S Wichita 2148 S Wichita		9-16-50 9-16-50		
2+0	99.27	95.91	3.36		+83.5	+56	# 2407	2142 S Wichita	2145 S Water 2143 S Water	11-9-45	11-4-29 7-18-25 8-15-46	
2+27	100.59	96.00	4.59	2+27 ^{for line South,}								

Line E. of Hydraulic from Park to Harry.

Line between Water / Wichita from Clark to Kinbaird.

97-18355-7
97-7214-7
10-20-47
5797 1533 S Kansas Back Backhoe - Main Rep by City new TAP STA 4721 S
4" SCH 40 2-TWIN C.O. 1 WYE FOR
AND KICK OUT

2148 S. Kinbaird (Harry) 2-22-14 (2nd 2-27)
S.C. 36846-1710 S. Harry - 1-23-73 at Henning

1098 - Tap - 1701 Park St - 3-2-42 - Frederick Pibg. Co.
1097 - Tap - 1707 Park St - 3-2-42 - Frederick Pibg. Co.
6203 - Tap - 2116 S. Wichita - 10-22-51 - Robinson Pibg. Co.
6 on S Wye - 15025 Hydraulic - Baker Pibg. - 4-18-55
6 on S Wye - 1539 S. Hydraulic - Callison - 7-18-55

14926 - 1421 S. Kansas - 10-30-55 - Repair (206.02 of mt # 11770 - 9+11.0)
2001-00900-416101-1530 S Hydraulic - Padgett EX - 4" SCH 40 - 4" Predco 78' S of MH 3+97 (4+75) trap installed, 2H4S, Fernco
to clay 15' from main