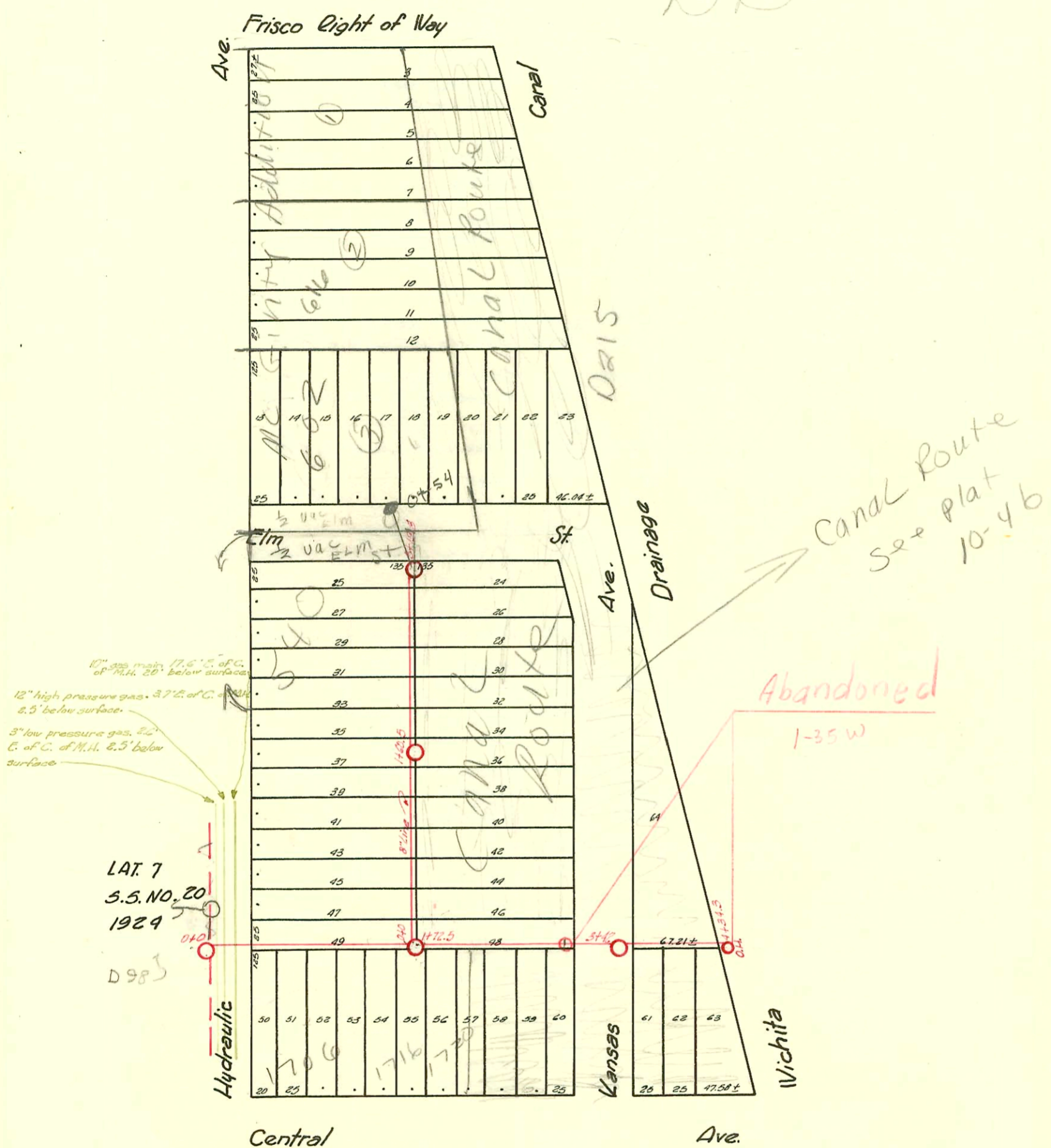


RR



LAT. 7
S.S. NO. 20
1924

D 98

Canal Route
see plat
10-46

Abandoned
1-35 W

D-159

CONSTRUCTION RECORD

SERVICE RECORD

STATION	ELEVATION		Depth	MANHOLE	4-INCH "Y" BRANCHES		No. of Permit		House Number		DATE OF PERMITS	
	Ground	Grade			North West	South East	North West	South East	North West	South East	North West	South East
0+0	113.58	104.70	8.88	M.H. in 0+0 Hydraulic		0+49.5 +74.7 +99.7		# 76220 # 61342 # 266	1706 E. Central 1706 S. Central		3-2-80 5-31-77 3-25-25	
1+0	110.88	104.85	6.03		1+27.7	1+25.2 +52.2		# 220	1710 E. Central		3-20-30	
2+0	111.36	105.00	6.36		1+72.5	2+02.5 +27.5		# 202	1710 E. Central		5-4-37	
3+0	110.50	105.15	5.35		2+54.9	+52.4 +80.2		# 2894 # 253 # 611 # 21400 # 2295	1716 E. Central 1760 E. Central 1760 E. Central		4-28-67 4-11-27 4-13-68 7-19-26 11-13-68 5-7-40	
4+0	108.60	105.30	3.30		3+42	+53 +80.4						
4+34.3	108.50	105.35	3.15	M.H. 4+34.3 (V.C.T)		+40.6 +20.8						
0+0	111.74	104.96	6.78	0+0	0+25.5	0+23 +48.9 +73.5		# 11401 # 7402	521-23-25 N. Kansas		11-13-22 2-5-52	
1+0	111.02	105.11	5.91		1+24.5	+96.5 +96 +84.5 +22		# 13083 # 2675	520-528 N. Hydraulic		2-20-85 12-8-84	
2+0	111.27	105.26	6.01		1+35.2	+73.8 +98.8 +96.3 +24.5 +22 +49.3 +46.8		13569	530-77 Hydraulic		4-25-85	
3+0	110.33	105.41	4.92		2+24.5	+74.5 +72 +99.5 +97		13569 # 6051 # 6050	530 Hydraulic 540 N. Hydraulic 540 N. Hydraulic		4-25-85 8-5-53 8-5-53	
4+19.8	110.07	105.44	4.63	3+19.8								
Private Line												
0+0	?	?	?	0+0 Exist 0+54.0	14" stub North	485 0+46 top		# 1-215797 B3200	606 N. Mc Hydraulic 602 N. Hydraulic		5-1-91 4-1-65	
<p>↓</p> <p>This M.H. was fixed in field by Lyon with sewer maint 4/91</p>												

Line N. of Central Hydraulic East.

East Hyd. of Kans. Line N. of Central to Clin.

#1159 - 1716 E. Central 9-8-80 Robert Perry (1+72.5 W) (top 1+67.9)

50261325-1702 E. Central - K.M. Luray 5-27-77 (0+50)

#849 - #850 - #851 - 3 Wyes set - Trailers - 4-10-52 - Rex Robertson, Inc. } 1706 E. Central
#852 - #853 - #854 - #855 - Private Line - Trailer Connections - 4-10-52 }
#8561528-30-32 - 1706 1/2 E. Central - 6-9-77