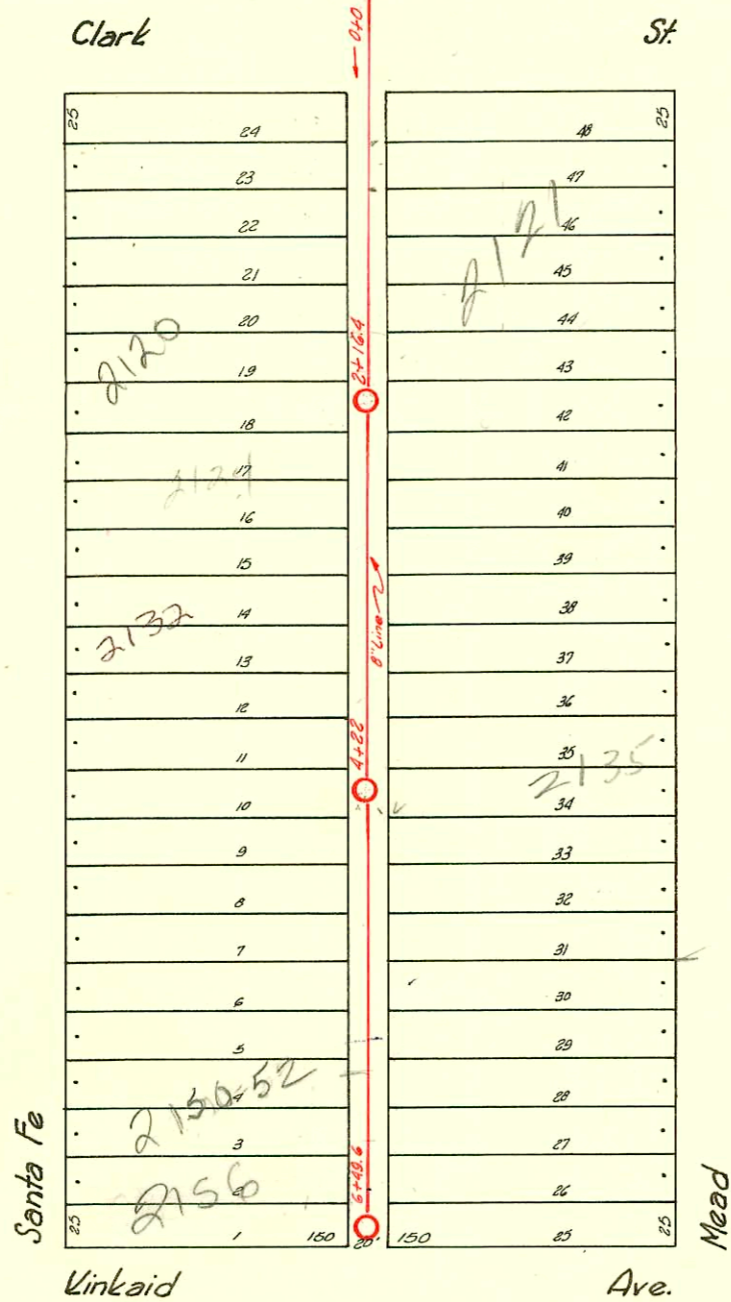


LAT. 12 - DIST. C  
 S.S. NO. 20  
 1925  
 H.L. MILES



LAT. 14 - DIST. C  
 S.S. NO. 20  
 1926  
 SNYDER & MEILERT

D-162

Form 41-(54) 12-54

CONSTRUCTION RECORD

SERVICE RECORD

Line between Santa Fe & Mead - Levy to Clark.

Line between Santa Fe & Mead - Clark to Linkaid.

STATION	ELEVATION		Depth	MANHOLE	4-INCH "Y" BRANCHES		No. of Permit		House Number		DATE OF PERMITS	
	Ground	Grade			North West	South East	North West	South East	North West	South East	North West	South East
0+0	101.19	93.30	7.89	0+0 M.H. in Levy	0+53.1 +77.9	0+56 +75.4	#45037 1666		715 East Levy		5-29-74 7-17-50	
1+0	101.39	93.50	7.89		1+04.8 +30.4 +55.1 +78.1	1+02.3 +27.9 +52.6 +75.6	#161	2002-3435 #84926	2010 5 Santa Fe	721 E Mt. Vernon	8-23-28 (add.)	12-18-02 7-12-66 8-13-71
2+0	101.56	93.70	7.86	2+077	2+11.7 +29.9 +55.7 +81.9	2+10.6 +27.4 +53.2 +79.4	#200 #606	2030 5 Santa Fe	721 E Mt. Vernon		12-27-04	
3+0	101.40	93.90	7.50		3+06.2 3+32.6 +58.1 +82	3+03.7 +30.1 +55.6 +79.5	#2764 #726	2028 5 Santa Fe			3-5-46 7-9-28	
4+0	101.61	94.10	7.51	4+14.8	4+09.5 +35.2 +61 +90.2	4+07 +32.7 +58.5 +87.7	#1605 #711	2025 5 Santa Fe	2033 S. Mead		7-18-27 8-24-27	11-19-54
5+0	101.52	94.30	7.22		5+12.2 +38.8 +63.3	5+09.7 +36.3 +60.8						
6+0	101.64	94.50	7.14		+89.5	+87						
6+40.5	101.82	94.58	7.24	6+40.5	6+15.8 +35.7	6+13.3 +33.2	#2022	2046 5 Santa Fe	713 E. Clark		8-21-50	8-29-68 8-11-48
0+0	102.32	94.70	7.62	0+0 same M.H.	0+56 +81 1+06.7	0+58.5 +83.5 1+09.2	#509	2102 5 Santa Fe	725 East Clark		6-14-49	8-3-87 4-12-34
1+0	102.12	94.80	7.32		+31.2 +57.6 +84	+33.7 +60.1 +87.5	#508 #811	2106 5 Santa Fe			6-14-49	
2+0	101.57	94.90	6.67	2+16.4	2+09.3 +35 +60.8 +86.2	2+11.8 +37.5 +63.1 +88.7	#332	2121 5 Santa Fe	2125 S. Mead		6-21-71 4-26-26	8-15-72 8-21-48
3+0	100.82	95.00	5.82		3+12 +37.4 +64 +89	3+14.5 +39.9 +66.5 +91.5	#67 #601	2128 5 Santa Fe	2129 S. Mead		8-3-27	8-15-72 6-30-47
4+0	100.95	95.10	5.85	4+22	4+14.4 +40.6 +66.2 +91.6	4+16.9 +32.0 +43.1 +68.7 +94.1	#780 #766	2132 5 Santa Fe	2133 S. Mead		7-15-27	7-19-24 6-8-44
5+0	101.32	95.20	6.12		5+18 5+42.7 5+68.3 5+95.9	5+20.5 +45.2 +70.8 +98.4	#191 #19246	2136 5 Santa Fe	2135 S. Mead		9-15-27	6-7-68 8-4-44
6+0	101.07	95.30	5.77		6+21.4	6+23.9	#2146	2144 5 Santa Fe			5-14-54	
6+49.6	100.32	95.35	4.97	6+49.6	6+45.3	4+78		2146 5 Santa Fe	730 E Linkaid		6-9-48 10-87	5-7-71 7-19-74 9-30-42

93-27626-7 2002 S Santa Fe 4" Clay and off 52' ft West of RPL and 2' ft South of NPL No. 1011

9/0 #14895 2113 S. Mead Henning 8-14-77 - sealed off from Mt. Vernon 5' from wife and  
 N.C.# 02255 2124 S. Santa Fe (Larger) M.H. 2+16.4 1-5-81  
 #580 - Top - 721 E. Levy - 5-29-28  
 #4882 - Top - 725 E. Clark - 3-29-51 - J.C. Loge  
 #2202 - Top - 725 E. Clark - 10-6-54 Harry Mann - Trailer  
 9682 6m wye 712 E Clark Henning 3-25-59 5+44.5  
 84634, 5' off, Helyport, 721 E. Mt. Vernon, 11-23-65 (0+70.4)  
 #23671 - 8/3/89 719 E. Clark - Henning - sealed 935' S. of OtoumH  
 #24370 - 11-29-89 - 2121 S. Mead Larry Little NLC - (1+27.4 TAP)