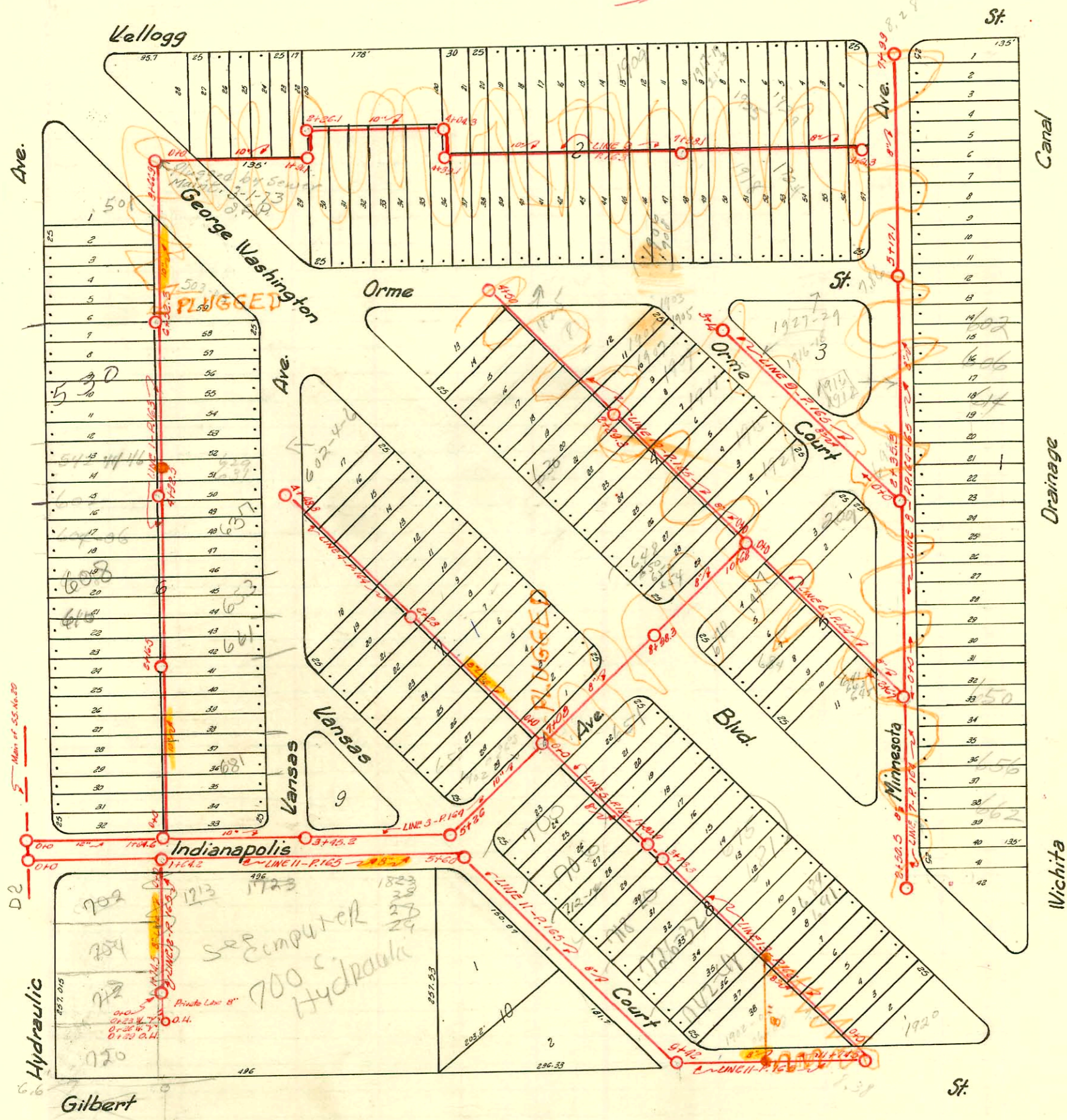


Note:

4" y's must be trapped with 6" trap.

LAT.8-S.S. NO. 20
1926
SNYDER & MEILERT

TRAP AREA



CHANGES BY STATE HWY DEPT
BOOKED 8-13-77 AS BUILT PLAN

99-9543-7-5/17/79-653 S Kansas - McCulloughs - 4" SCH 40 Full Replace 1291 50' MH 4+32.5 (3+03.5) 2H22

99-064648-530 S Hydraulic (Penny Power) 12-29-77 - New M.H.?
#465 711 S 720 Court R 6-5-80 see map 9+42.0 - N.W. ()

93-3054-7-2-16-93 610 S Hydraulic - McCullough - 4" PVC 40 - 44" Fall w/trap wire repair by city

Sub 2000-00 678 3-14-00 720 S Hydraulic - Henning

CONSTRUCTION RECORD

SERVICE RECORD

STATION	ELEVATION		Depth	MANHOLE	4-INCH "Y" BRANCHES		No. of Permit		House Number		DATE OF PERMITS	
	Ground	Grade			North West	South East	North West	South East	North West	South East	North West	South East
0+0	102.20	96.75	5.45	M.H. at N.S. Indianapolis 0+0 C. of Hydraulic	0+21.3	0+23.8	# 350	625 Kansas				7-2-46
					+47	+49.5	# 2535	642 S. Hydraulic			8-18-42	
					+73	+75.5						
					+98.8	+101.3	# 2536	# 97 351	632 S. Hydraulic	601 B Kansas	8-18-42	4-15-47 7-2-46
1+0	103.47	96.90	6.57		1+21.7	1+24.2		# 533	675-77 Kansas		8-18-42	7-2-46
					+47.5	+50	# 788	665 Kansas				8-24-48
				2+16.5	+73.2	+75.7						
					+99	2+01.5						
2+0	104.98	97.00	7.98		2+24.6	+27.6	# 1359	661 Kansas				1-30-47
					+50.8	+53.3	# 979543	653 Kansas			see next pg	4-20-43
					4+54.0 +76.5	+79	# 502					
					+99.8	3+02.3						
3+0	106.25	97.10	9.15		3+25.7	+28.2						
					+48.7	+51.2	# 2588	604 + 606 S. Hydraulic			8-19-40	
					+69.5	+72	# 768	637 Kansas				1-22-41 4-16-43
				4+32.5	+95.3	+97.8	# 593	608 S. Hydraulic			7-12-26	
4+0	105.78	97.20	8.58		4+21	4+23.5	# 786	614 S. Hydraulic	622-25-28 S. Kansas		9-16-26	8-23-54
					+47.3	+49.8	# 779	612 S. Hydraulic			9-15-26	
					+70.3	+72.8	# 768	614 S. Hydraulic			9-8-26	
					+96	+98.5	# 3254	540 S. Hydraulic			3-31-41	
5+0	106.53	97.30	9.23		5+22	5+24.5	# 433	519 S. Hydraulic	613 Kansas		2-28-47	5-24-47 4-14-43
					+47.8	+50.3	# 2990	520 S. Hydraulic			4-29-46	
					5+10.5 +70.8	+73.3						
					+97	+99.5						
6+0	105.17	97.40	7.77		6+22.5	6+25	# 331	514 S. Hydraulic			4-26-26	
				6+52.3	+43	+45.5	# 1541	520 S. Hydraulic			5-10-39	
					+69	+71.5						
					+95	+97.5						
7+0	105.30	97.50	7.80		7+20.7	7+23.2	# 425	1703 E. Kellogg			5-25-27	
					+46.3	+48.8	# 408	1709 E. Kellogg			4-22-29	
					+72	+74.5	# 117	1709 E. Kellogg			6-5-35	
					+97.6	8+00.1	# 197	1725 E. Kellogg			3-15-26	
8+0	105.27	97.60	7.67		8+24	West Only	# 156	602 S. Hydraulic			4-2-31	
					+44.8	" "						
8+66.9	104.76	97.67 OUT	7.09	M.H. in 8+66.9 Bldg	+63	" "	# 425	1703 E. Kellogg			5-25-27	
0+0	104.76	97.70 IN	7.06	0+0 - Same M.H.	0+22.5	North Only	# 408	1709 E. Kellogg			4-22-29	
					+52.2 N.	0+54.7 S.	# 117	1709 E. Kellogg			6-5-35	
1+0	106.04	97.80	8.24		1+04.3	1+06.8	# 197	1725 E. Kellogg			3-15-26	
					+30	+32.5	# 2403	1711 E. Kellogg			7-11-40	
					+55.6	+58.1						
1+91.1	105.95	97.89 OUT 97.91 IN	8.04	1+91.1	+81.2	+83.7						
2+0					2+10.1 W.							
2+26.1	106.24	97.95	8.29	2+26.1	+35.4 N.	2+37.9 S.	# 588	1703 E. Kellogg			6-24-27	
					+61.1	+63.6						
					+84.1	+86.6						
3+0					3+10.1	3+12.6						
3+26.1	106.60	98.05	8.55		+36.1	+38.6						
					+61.6	+64.1						
				4+04.3	+87.1	+89.6						
4+0					4+27.1 W.	4+24.6 E.						
4+04.3	106.60	98.13 OUT 98.15 IN	8.45	4+39.1	+47.8 N.	+50.3 S.						
4+39.1	106.38	98.20	8.13		+73.3	+76.3	# 313	1829 E. Orme	1822 E. Orme		9-4-70	9-1-48
					+98.7	+101.2	# 543	1825 E. Kellogg			6-23-26	
5+0					5+22.6	+25.1	# 78	1815 E. Kellogg			2-17-30	
5+39.1	106.25	98.30	7.95		+48.1	+50.6						
					+73.6	+76.1						
					+96.9	+99.4	# 18946	1829 E. Orme	1828-30-32-34 E. Orme		4-23-70	10-23-42
6+0					6+22.4	6+24.9	# 869	1819 E. Kellogg	1804 E. Orme		9-4-70	11-21-38
6+39.1	107.01	98.40	8.61		+44.9	+47.4	# 712	1903 E. Kellogg			9-17-30	11-21-38
					+71.1	+73.6						
					+97.1	+99.6	# 981	1915 E. Kellogg	1906 E. Orme		8-17-70	7-8-69
7+0				7+38.1	7+22.9	7+25.4	# 300	1917 E. Kellogg	1910 E. Orme		10-30-30	6-22-31
7+38.1	107.48	98.50 OUT 97.67 IN	8.81		+46.9	+49.4					2-21-69	9-21-46
					+72.9	+75.4					5-26-49	
					+98.9	8+01.4	# 1559	1921 E. Kellogg	1913 E. Orme		2-21-69	2-26-70
8+0					8+22.5	+25	# 299	1921 E. Kellogg	1913 E. Orme		5-26-49	9-21-46
8+38.1	108.40	98.77	9.63		+48	+50.5	# 366	1921 E. Kellogg	1913 E. Orme		9-17-30	9-23-31
9+0					+74.7	+77.2						
9+38.1	108.39	98.87	9.52		+33.1	9+01.6						
9+61.3	108.35	98.90	9.45	9+61.3	+24.8	+27.3						
					+47.8	+50.3						

Line 1

Line 2

458 - Tap - 1709 E. Kellogg - 6-2-26
 # 50 - Tap - 1931 E. Gilbert - 1-13-30 - Clark & Smith
 # 176 - Tap - 1711 E. Kellogg - 8-14-39 - Moore - Robertson Plog. Co.
 # 2581 - Tap - 201 Kansas Court - 3-28-42 - Wichita Plog. Co.
 # 2767 - 6 on 10" Wye - 1807 E. Kellogg - 10-3-52 - Davidson Plog. Co.
 # 7305 - Tap - 1-4-59 - 1803 E. Orme - Creechmore Plog.
 # 819 - Tap - 606 S. Hydraulic - 4-16-52 - Eugene Reynolds
 # 1742 - Used old connection - 601 Geo. Washington Blvd. - 2-27-56 - Joe M. Donald
 # 1801 - Used old connection - 308 S. Hydraulic - 9-26-44 - Thompson Plog.
 # 203 - Tap - 1233 E. Kellogg - 10-10-47 - Bryan Plog. Co.
 # 565 - Tap - 670 Geo. Wash. Blvd. - 8-7-47 - Rigg Plog.
 # 564 - Tap - 1949 E. Indianapolis - 8-7-47 - Rigg Plog.
 # 2625 - Tap - 1902 E. Gilbert - 9-7-42 - Wichita Plog.
 # 2299 - Tap - 615 Geo. Wash. Blvd. - 11-5-46 - Simmons Plog. Co.
 # 383 - Tap - 612 Orme Court - 11-25-46 - Wichita Plog. (Tap in Minnesota Ave. Sewer)
 # 1083 - Tap - 648-650-652 - Geo. Wash. Blvd. - 11-11-46 - Simmons Plog. Co.
 # 6074 - 501 Geo. Wash. Blvd. - Callison Plog. 1-31-58 - Used old connection.
 # 8803 - Let from Wye - trailer - 618 S. Minnesota - Dandling Plog. 12-2-58
 # 8804 - private line - trailer - 618 S. Minnesota - Paul King Plog. 12-2-58
 # 15530 - 1929 E. Kellogg - lead off - Ark Valley Sewer - 8-2-69
 # 16182 - 542-44-46 S. Hydraulic - Al Henning - 10-7-67 - Wye 4+70.3
 # 17676 - 1909 E. Kellogg - 1-16-70 - Ark Valley Sewer (6+46.1)
 # 5-19-70 - at Henning (10+14)
 # 18044 - 1916-18 E. Orme Ct. - Ark Valley Sewer - 2-19-70 (at tip in Minnesota St. Sewer)
 (4+39.1)

CONSTRUCTION RECORD

SERVICE RECORD

STATION	ELEVATION		Depth	MANHOLE	4-INCH "Y" BRANCHES		No. of Permit		House Number		DATE OF PERMITS	
	Ground	Grade			North West	South East	North West	South East	North West	South East	North West	South East
0+0	103.59	93.99 OUT 92.50 IN	9.20	0+0 M.H. on Main in Hydraulic								
1+64.6	102.20	96.67 OUT 96.84 IN	5.36	1+64.6								
3+45.2	106.50	97.02	9.48	3+45.2								
5+26	104.37	97.22	7.15	5+26	3+75 N. Only		# 2457		601 Kansas Ct.		4-8-49	
7+08	104.11	97.39 OUT 97.56 IN	6.55	7+08	4+13.5 "							
8+98.3	106.16	97.76	8.40	8+98.3	+60 "							
10+68	107.07	97.95	9.12	10+68								
0+0	104.11	97.65 IN	6.46	0+0 M.H. in Indianapolis	0+23 S.W.	0+25.5 N.E.	# 2906	# 22136 # 3031 # 2315	658 Kansas Ct. 602 Kansas Ct.	629 Geo. Wash. Blvd. 645-47-4972 Geo. Wash. Blvd.	10-27-42 12-16-46	12-10-70 1-2-47 7-6-71 8-25-52
1+0	105.14	97.75	7.39	1+0	1+24	+26.5	# 106		637-643 Geo. Wash. Blvd.		12-16-70 12-10-42	
2+0	105.34	97.85	7.49	2+0	2+21	+23.5	# 1109	# 20525 # 1336	640 R Kansas Ct.	631 Geo. Wash. Blvd.	12-16-46	8-12-70 1-28-47
3+0	105.40	97.95	7.45	3+0	3+25.3	+27.8	# 134 # 1705 # 2905	# 20520 # 1337	634 Kansas Ct. 626-628 Kansas Ct.	623 Geo. Wash. Blvd. 617 Geo. Wash. Blvd.	8-26-48 2-4-47 10-27-42	8-12-70 1-28-47
4+0	105.39	98.05	7.34	4+0	4+22	+24.5	# 2904	# 1709 # 20523	618 Kansas Ct.	617 Geo. Wash. Blvd.	10-27-42	3-31-47 8-12-70
4+48.8	106.04	98.10	7.94	4+48.8 M.H. in Kansas	4+22	+24.5	# 1210		700 Kansas Ct.		11-19-38	
0+0	104.11	97.65 IN	6.46	0+0 M.H. in Indianapolis	0+34.1 S.W.	0+31.6 N.E.	# 150	# 21297 # 1519 # 22137 # 1518	601 Geo. Wash. Blvd. 659 Geo. Wash. Blvd.			10-8-70 2-24-47 2-24-47
1+0	105.28	97.75	7.53	1+0	1+12.1	+109.6	# 7015 # 6528		706 Kans. Ct. 714-11-11 Kans. Ct.		4-30-49 11-23-51	2-24-47
1+80.9	105.48	97.83	7.65	1+80.9	+76.7	+74.2						
0+0	107.07	98.00 IN	9.07	0+0 M.H. in Indianapolis	0+38.5 S.W.	0+36 N.E.	# 15535 # 1107	# 14891 # 2455	696 Geo. Wash. Blvd.	6952001 Orme Ct.	8-21-69 12-16-46	7-8-69 6-26-46
1+0	107.84	98.10	9.74	1+0	1+14.2	+11.7	# 1106	# 14797 # 1253	644-3-5 5 Minnesota	631 5 Minnesota	8-21-69	7-8-69 12-8-47
2+0	106.63	98.20	8.43	2+0 M.H. in Minnesota	2+17.9	+15.4	# 1099		634 Geo. Wash. Blvd.	631 5 Minnesota	12-16-46	12-12-46
2+67	104.94	98.27	6.67	2+67	2+17.9	+15.4						
0+0	105.04	98.30	6.74	0+0	0+21.9 W.	0+19.4 E.	# 15538					
1+0	104.62	98.40	6.22	1+0	+47.9	+45.4	# 1880					
2+0	104.84	98.50	6.34	2+0	+71	+71	# 17684 # 3324 # 11580 # 695		652 5 Minnesota 666 S. Minnesota			1-16-70 2-17-50 11-18-68 9-4-47
2+50.5	106.09	98.55	7.54	2+50.5	+34	+34	# 15538					
0+0	105.04	98.30	6.74	0+0	0+27 E. Only		# 1890		630 S. Minnesota		8-21-69	4-28-47
1+0	105.17	98.40	6.77	1+0	0+50.0	+53.2	# 1339	# 12372 # 1339	631-375 Minnesota	656 S. Minnesota	8-21-69	1-24-69 1-28-47
2+0	105.44	98.50	6.94	2+35.3	+76.5	+76.5	# 18142 # 1383	# 18137	638-49 S. Minnesota			2-26-70
3+0	105.73	98.60	7.13	3+0	+88.6	+46.8	# 1600		632 S. Minnesota			2-26-70 8-5-47
4+0	106.71	98.70	8.01	4+0	+69.7	+93	# 1100	# 1479	624 S. Minnesota			6-12-44
					+47.3	+47.3	# 5065		638 S. Minnesota			12-12-46
					+70.8	+70.8			606 S. Minnesota			7-13-54
									608 S. Minnesota			6-21-51

See page 165 for remainder of Line 8.

Seal off C19218 - 606 S. Minnesota - C. J. Rutledge - 5-11-70 (3+72.1)
 Seal off C19217 - 602 S. Minnesota - C. J. Rutledge - 5-11-70 (4+29.1)
 Seal off C35821 - 614 S. Minnesota - at Kenney - 11-6-72 (3+79.3)

D-165

CONSTRUCTION RECORD

SERVICE RECORD

STATION	ELEVATION		Depth	MANHOLE	4-INCH "Y" BRANCHES		No. of Permit		House Number		DATE OF PERMITS					
	Ground	Grade			North West	South East	North West	South East	North West	South East	North West	South East				
5+0	106.66	98.80	7.86	5+171		4+94 E. Only 33.1	Seal off #13380 2491 #C-16493 1097	530 S. Minnesota 5225-5248 Minnesota				12-29-70 11-16-49 12-27-69 12-12-46				
													+46.2			
													+69.8			
6+0	106.36	98.90	7.46			+93 6+16.4	Seal off #18945 170	Seal off 518 S. Minnesota				4-23-70 9-20-47				
													+39.4			
													+63			
7+0	106.51	99.0	7.51			+86.7 7+12.5	Seal off #18944 #2171 #C-22895 3495	Seal off 512 S. Minnesota 200 E. Kellogg				4-23-70 7-25-45 2-10-71 8-9-51				
													+35.8			
													+57			
7+99	107.38	99.10	8.28	7+99		+75										
0+0	106.52	98.62	7.90	0+0		1+38.5 N.C. Only										
													+62			
													+85.7			
1+0	106.83	98.72	8.11			2+08.7										
													+32			
													+55.6		#855	1907- E. Orme
2+0	106.71	98.82	7.89			+78.7										
													+32			
													+55.6		#855	1907- E. Orme
3+0	106.57	98.92	7.65			+78.7										
													+32			
													+55.6		#855	1907- E. Orme
3+14	106.52	98.93	7.59	3+14		3+02.4										
													+32			
													+55.6		#855	1907- E. Orme
0+0	107.07	98.0	9.07	0+0	0+20 S.W.	0+22.5 N.C.	Seal off #16492 6308	Seal off 16492 6308	Seal off 1817 1921	Orme Ct.		7-8-69 4-30-48				
													+46	+48.5		
													+72.2	+74.7		
1+0	107.53	98.10	9.43		1+22	1+24.5	Seal off #1335 333	Seal off #1335 333	Seal off 1915	Orme Ct.		4-30-69 7-30-37				
													+96.3	+98.8		
													+45.7	+48.2		
2+0	106.84	98.80	8.64	2+29.3	2+21	2+23.5	Seal off #1335 333	Seal off #1335 333	Seal off 1915	Orme Ct.		4-30-69 7-30-37				
													+47.5	+50		
													+71.2	+73.7		
3+0	106.84	98.30	7.74		3+21.7	3+24.2	Seal off #1335 333	Seal off #1335 333	Seal off 1915	Orme Ct.		4-30-69 7-30-37				
													+97	+99.5		
													+48.2	+50.7		
4+0	106.34	98.40	7.94		4+22	4+24.5	Seal off #1335 333	Seal off #1335 333	Seal off 1915	Orme Ct.		4-30-69 7-30-37				
													+97	+99.5		
													+48.2	+50.7		
0+0	103.45	96.50	6.95	0+0	M.H. in Hydraulics	1+44.3 S	Seal off #2000 2703	Seal off #2000 2703	Seal off 1713 C. 40	Indianapolis		3-14-40 9-21-42				
													+164.2	+70		
													+93.7	+17		
1+0	102.66	96.60	6.06			+40.3	Seal off #2000 2703	Seal off #2000 2703	Seal off 1713 C. 40	Indianapolis		3-14-40 5-18-48				
													+69			
													+34.3			
2+0	103.87	96.70	7.17			+58	Seal off #2000 2703	Seal off #2000 2703	Seal off 1713 C. 40	Indianapolis		3-14-40 5-18-48				
													+81.3			
													+102.8			
3+0	105.95	96.80	9.15			+25.7	Seal off #2000 2703	Seal off #2000 2703	Seal off 1713 C. 40	Indianapolis		3-14-40 5-18-48				
													+19			
													+73			
4+0	106.15	96.90	9.25			+96.4	Seal off #2000 2703	Seal off #2000 2703	Seal off 1713 C. 40	Indianapolis		3-14-40 5-18-48				
													+19.6			
													+93.8 S.W.			
5+0	104.18	97.0	7.18	5+60		6+17	Seal off #2000 2703	Seal off #2000 2703	Seal off 1713 C. 40	Indianapolis		3-14-40 5-18-48				
													+40.2			
													+66			
6+0	103.02	97.10	5.92			+91.6	Seal off #2000 2703	Seal off #2000 2703	Seal off 1713 C. 40	Indianapolis		3-14-40 5-18-48				
													+40.2			
													+66			
7+0	102.66	97.20	5.46			+71.6	Seal off #2000 2703	Seal off #2000 2703	Seal off 1713 C. 40	Indianapolis		3-14-40 5-18-48				
													+44.1			
													+17.6			
8+0	103.46	97.30	6.16			+67.3	Seal off #2000 2703	Seal off #2000 2703	Seal off 1713 C. 40	Indianapolis		3-14-40 5-18-48				
													+44.1			
													+17.6			
9+0	103.26	97.40	5.86			+93.3	Seal off #2000 2703	Seal off #2000 2703	Seal off 1713 C. 40	Indianapolis		3-14-40 5-18-48				
													+44.1			
													+17.6			
10+0	104.81	97.50	7.31			+19.8	Seal off #2000 2703	Seal off #2000 2703	Seal off 1713 C. 40	Indianapolis		3-14-40 5-18-48				
													+44.1			
													+17.6			
11+0	106.48	97.60	8.88	9+42		7+93.3	Seal off #2000 2703	Seal off #2000 2703	Seal off 1713 C. 40	Indianapolis		3-14-40 5-18-48				
													+44.1			
													+17.6			
11+74.5	106.06	97.68	8.38	11+74.5		8+19.8	Seal off #2000 2703	Seal off #2000 2703	Seal off 1713 C. 40	Indianapolis		3-14-40 5-18-48				
													+44.1			
													+17.6			
0+0	108.84	96.64	6.20	0+0	0+30.8 W	+57 4" 50" 35 0+83.3	Seal off #2000 2703	Seal off #2000 2703	Seal off 702 S. Hydraulic 510	Indianapolis		3-14-40 8-18-42 3-14-40 9-21-42				
													+57			
													+83.3			
1+0	101.77	96.74	5.03		1+09.4	1+35.4	Seal off #2000 2703	Seal off #2000 2703	Seal off 702 S. Hydraulic	Indianapolis		3-14-40 9-21-42				
													+35.4			
													+61.4			
1+74.5	99.45	96.81	2.64	1+74.5			Seal off #2000 2703	Seal off #2000 2703	Seal off 702 S. Hydraulic	Indianapolis		3-14-40 9-21-42				
													+61.4			

Line 8 (Cont.)

Line 9

Line 10

Line 11

Line 12

Seal off C15532 - 1909 Orme Court - Ark Valley Sewer Service - 8-21-69 (1+84.9) 99-65977 4-13-99 704-410 S. Hydraulic
 Seal off C18135 - 1905-09 Orme Court - Ark Valley Sewer Service - 2-26-70 (2+74.3)
 Seal off C22222 - 1927-29 E. Orme - C. L. Rutledge - 12-16-70 (2+46)

D-166

Form 41-(54) 12-54

CONSTRUCTION RECORD

SERVICE RECORD

STATION	ELEVATION		Depth	MANHOLE	4-INCH "Y" BRANCHES		No. of Permit		House Number		DATE OF PERMITS	
	Ground	Grade			North West	South East	North West	South East	North West	South East	North West	South East
0+0	106.06	97.68	8.38	0+0 M.H. in Gilbert		0+26 N.C. +49.5 +75.4						
1+0	105.49	97.78	7.71		1+01.5 S.W. +27.4 +53.4 +79.3	+99 +24.9 +50.9 +76.8	#21932 667 #1258	693 Geo. Wash. Blvd. 679 Geo. Wash. Blvd.			11-30-70 6-7-43 8-17-49	
2+0	105.60	97.88	7.72		2+02.5 +25.9 +52 +78.3	2+00 +23.4 +49.5 +75.8	#2580 #25073 #44 #2579	748 Kansas Ct. 689-91 687 Geo. Wash. Blvd. 726 Kansas Ct.			8-26-42 6-23-71 8-23-37 8-26-42	
3+0	105.56	97.98	7.58		3+04.5 +27.4	3+02 +24.9	#41 #22138 #361 #1553	722 Kansas Ct. 673 Geo. Wash. Blvd. 663 Geo. Wash. Blvd.			12-10-70 7-7-48 3-4-47	
3+73.3	105.58	98.05	7.53	3+73.3	+53.8	+51.3						
0+0	94.52	88.70		0+0								
1+0	94.19	88.77										
2+0	94.29	88.84										
3+0	94.40	88.91										
4+0	94.41	88.98	5.43	3+94.6								
5+0	94.82	89.05										
6+0	95.42	89.12										
7+0	95.02	89.19										
8+0	95.27	89.26	6.01	7+77								
9+0	94.94	89.32										
10+0	94.75	89.39										
11+0	95.15	89.46										
12+0	96.17	89.53		11+73.5								
13+0	95.25	89.90										
14+0	95.01	89.97										
15+0	95.39	90.04										
16+0	95.93	90.11		15+69.5								
17+0	96.24	90.18										
18+0	96.13	90.25										
19+0	96.63	90.32										
20+0	96.63	90.39		19+64								
21+0	96.73	90.46										
22+0	96.73	90.53										
23+0	96.63	90.60										
23+37.4	96.63 21"-90.63 18"-90.78	90.63 90.78		23+37.4								
24+0	96.91	90.81										
25+0	96.62	90.87										
26+0	96.60	90.94										
27+0	96.64	91.01		26+97.8								
28+0	95.78	91.08										
29+0	97.93	91.15										
30+0	95.72	91.22										
31+0	95.54	91.30		30+64.5								
32+0	95.02	91.37										
33+0	95.62	91.44										
34+0	95.90	91.50										
35+0	96.57	91.57		34+44.3								
36+0	99.23?	91.64										
37+0	101.68?	91.71		36+27.3	M.H. by		230752 C13299 1003 pt. 3-26-67 (Rec. 30752)	800 1/2 E Pawnee			3-29-67	
38+0	100.39?	91.78										
39+0	96.82	91.85	4.97	38+47.8								
40+0	96.26	91.93										
41+0	96.81	92.00										
42+0	96.71	92.07										
43+0	97.10	92.14		42+23.8								
44+0	96.88	92.21										
45+0	98.08	92.28										
46+0	98.10	92.35		45+91.7								
47+0	97.95	92.42										
48+0	97.88	92.49										
49+0	98.44	92.56										
49+82.3	18"-92.62 15"-92.75	92.62 92.75		49+82.3								
50+0	99.08	92.76										
51+0	99.02	92.82		51+58.7								
52+0	99.84	92.89		53+50.5								
53+0	99.32	92.96		See next page.								

Line 13

Sub-Main in Franklin Road (Now Pawnee)

#64 Tap-23573 Hydraulic-2-14-30-M.L. Lansdowne
 #2842 Tap-23583 Washington-11-6-40-M.L. Lansdowne
 #1186 Tap-1920 E. Gilbert-5-23-50-Rex Robertson 12-16-70 C.L. Rathjens (0+24)
 See off C22228
 See off C26527-687 Geo. Wash. Blvd. 8-16-71 (2+23)
 See off C34494-675-81 Geo. Wash. Blvd. 8/25/72 (3+29)