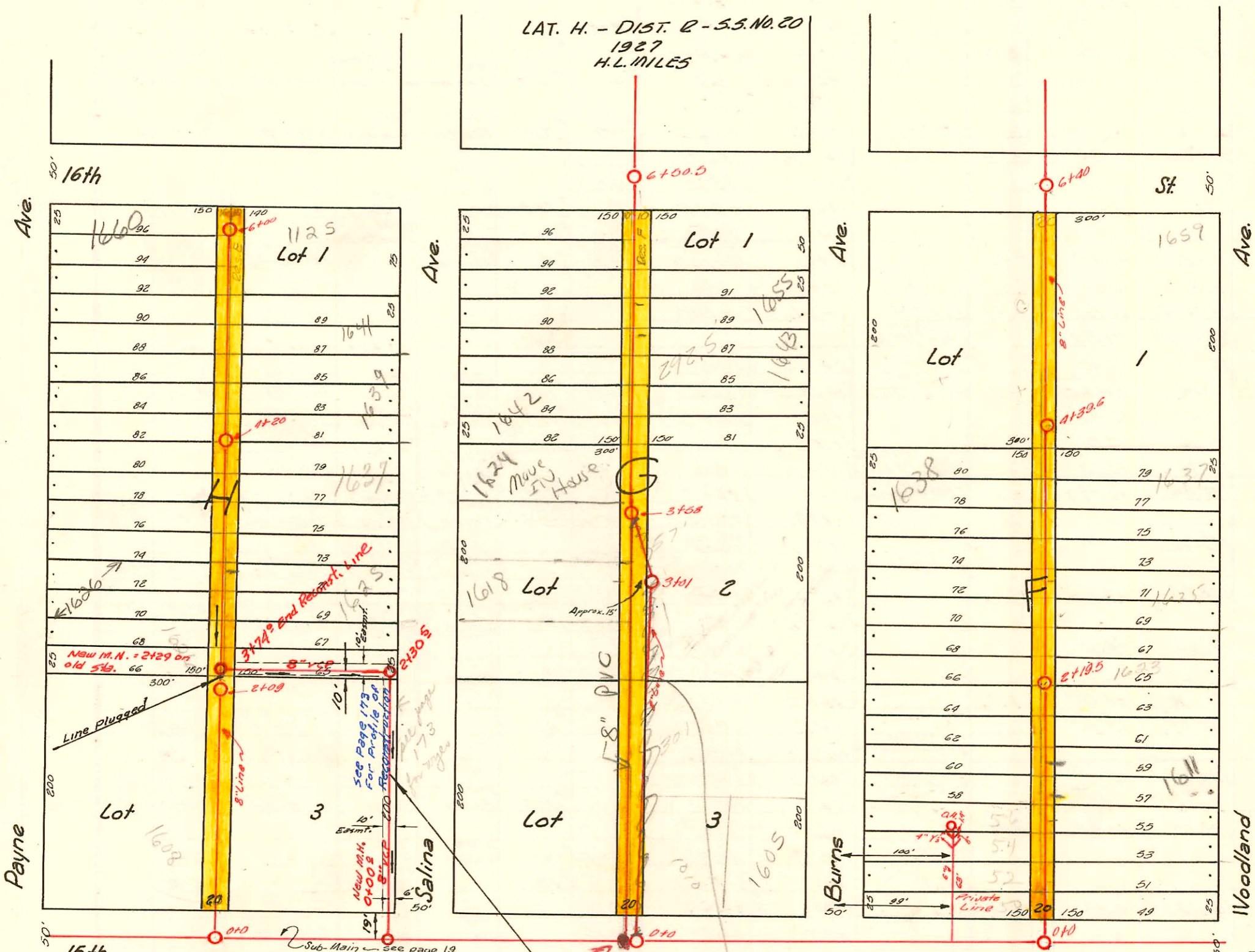


CONSTRUCTION RECORD

See page 172 for lines from 16th to 17th Streets—From Payne to Woodland.



The recording number for easements for sewers is Case No. 63671 Dist. Court.

RELOCATION OF PART OF LAT. H. DIST. R, S.S. 20
 UTILITY CONTRACTORS INC. 10-2-63
 PRIVATE CONTRACT, K-75, BOOKED 12-18-63
 PLAN 9-9-4(5) NOTE: See Page 172 For Profile of 8\"/>

Line abandoned between MH 0100 and MH 3101. Line Rehab to PVC and Laid STRAIGHT with New 0100 MH built to W. of orig. MH BSR 1173-00

B
 2000-02306 10/20/00 1613 N Salina - Woodlawn church - 3 D.G. 15'-4" SCH 40, ITWIN CO,
 2V22, HV45 49.6' E of MH 2+30.5
 2002-01749 6/24/02 1660 N Payne - Boardman - 4\"/>

D171

CONSTRUCTION RECORD

SERVICE RECORD

STATION	ELEVATION		Depth	MANHOLE	4-INCH "Y" BRANCHES		No. of Permit		House Number		DATE OF PERMITS	
	Ground	Grade			North West	South East	North West	South East	North West	South East	North West	South East
0+0	181.72	111.88	9.84	0+0 M.H. in 15th on sub-main	0+31.5	0+29						
					+56.5	+54						
					+81.5	+79	#1561		1608 Payne			5-23-44
1+0	181.20	111.98	9.22		1+09.5	1+07	#2425		1606 Payne			11-3-54
					+35	+32.5						
					+61	+58.5						
					+86.5	+84						
2+0	122.03	112.08	9.95	2+09	2+14.5	2+12			1623 Salina			5-11-64
					+40.5	+38						7-3-28
					+63.5	+61						
					+89	+86.5						
3+0	123.03	112.18	10.85	3+09	3+15.5	3+13			1634 Payne	1633 Salina		5-21-28
					+40	+37.5	#1198		1638 Payne	1633 Salina		8-17-42
					+70.5	+68						9-28-39
					+91	+88.5	#1694		1638 Payne	1633 Salina		5-6-42
					+16.5	+14						5-21-28
4+0	123.45	112.28	11.17	4+20	4+42	4+39.5			1642 Payne	1637 Salina		8-23-50
					+67.5	+65						5-21-28
					+93	+90.5	#1257		1650 Payne			11-10-43
5+0	122.47	112.38	10.09		5+19	5+16.5			1641 Salina			5-21-28
					+45	+42.5	#2033		1652 Payne			6-8-42
					+70	+67.5						12-14-70
6+0	122.45	112.48	9.97	6+00	+95.2	+93						1-14-48
0+0	120.11	110.24	9.87	0+0 M.H. in 15th	0+27.5	0+25						6-2-45
					+52.5	+50	#593		913 W. 15th	1601 Woodland		11-11-37
					+77.5	+75						3-30-37
1+0	119.71	110.34	9.37		1+22.5	1+20			1607 Woodland			12-15-36
					+28	+25.5	#420		1610 Burns			8-18-37
					+54	+51.5	#380		1611 Woodland			6-30-30
					+78.5	+76	#1102		1619 Burns			7-29-37
2+0	119.06	110.44	8.62	2+19.5	2+23.5	2+21			1615 Woodland			9-26-38
					+30	+27.5	#1762		1622 Burns	1621 Woodland		4-16-30
					+55.2	+53						7-25-40
					+81	+78.5	#5840		1626 Burns			6-16-47
3+0	119.16	110.54	8.62		3+05.5	3+03			1629 Woodland			5-11-33
					+30.5	+28	#3708		1634 Burns			3-6-30
					+56.5	+54						6-20-41
					+81.5	+79	#2369		1638 Burns	1637 Woodland		10-14-3
4+0	119.14	110.64	8.50	4+39.6	4+07	4+04.5						5-31-40
					+32	+29.5						9-16-37
					+57.5	+55	#421		1642 Burns	1641 Woodland		8-18-37
					+83	+80.5	#1694		1654 Burns			3-2-48
5+0	119.16	110.74	8.42		5+09.5	5+07			1645 Woodland			9-6-29
					+35	+32.5	#1225		921 W. 16th			2-8-54
					+60.5	+58	#37		1658 Burns	1647 Woodland		6-7-22
					+86	+83.5	#1124		1226 Burns			10-22-28
6+0	119.66	110.84	8.82	6+40	6+11.5	6+9						9-6-29
0+0	120.85	109.53	11.32	0+0	0+30	0+27.5			1024 W. 15th	1010 R. W. 15th		8-10-46
					+55	+52.5	#500		1608 Salina			1-9-46
					+80.5	+78	#2555					10-26-42
1+0	120.12	109.63	10.49		1+05	1+03.5			1610 Salina			5-9-47
					+31.5	+28	#1996					6-6-47
					+54	+51.5						9-5-42
					+79.5	+77	#154		1617 R. Salina	1617 Burns		6-6-47
2+0	120.23	109.73	10.50		2+05	2+02.5						9-5-42
					+30	+27.5	#1380		1621 Burns			4-3-42
					+55.5	+53	#916		1616 Salina			8-27-28
					+80.5	+78	#7069		1618 Salina	1633 Burns		11-29-53
3+0	120.42	109.83	10.59	3+01	3+07	3+04.5			1618 Salina	1635 Burns		7-8-50
					+33.5	+31	#1571		1624 Salina			2-15-46
					+66	+63.5	#680		1624 Salina			11-14-00
					+92.5	+90			1626 Salina	1639 Burns		5-21-78
4+0	120.76	109.93	10.83		4+18	4+15.5						6-11-29
					+43.5	+41	#1993		1645 Burns			9-18-47
					+69	+66.5						11-27-39
					+95	+92.5	#994		1648 Salina			8-19-43
5+0	120.51	110.03	10.48		5+19	5+16.5			1643 Burns			5-12-39
					+45	+42.5	#1992		1651 Burns			11-27-39
					+70.5	+68						1-19-66
					+95.5	+93						
6+0	120.75	110.13	10.62	6+50.5								

Between Salina & Payne. 15th to 16th

Between Woodland & Burns. 15th to 16th

Between Burns & Salina. 15th to 16th

Line updated to PVC. No Wyes now. First Bldg. Recamer. No Ref. to 66T

#311-Tap-1657 Burns-8-5-36-Cherry Pkg. Co.
 #1749-Tap-1602 Burns-8-1-39-Carr
 #2064-Private Line-1606 Burns-1-10-40-Carl E. Carr
 #1781-Tap-1124 W. 15th-10-25-44-J.N. Hanna
 #718-Tap-1605 Burns-9-26-46-Frederick Pkg.
 #910-Tap-1640 Salina-1-24-42-J.C. Hendrich
 #2336-Tap-1653 Payne-7-16-42-J.C. Lansdowne
 #2497-Tap-16th & Salina (Church)-8-3-42
 #1490-Private Line-1623 Salina-11-11-48-Frederick
 B5063-1652 Salina-Fredrick Pkg 2-11-66 top (5+53.6)-New leg.
 R #35057 1639 Salina
 R 2000-01140-1611 N WOODLAND-ARB VALLEY PLB-5/8/00 TIED TO CLAY TILE AT 450 (450 ELL GOING DOWN TO SEWER MAIN)