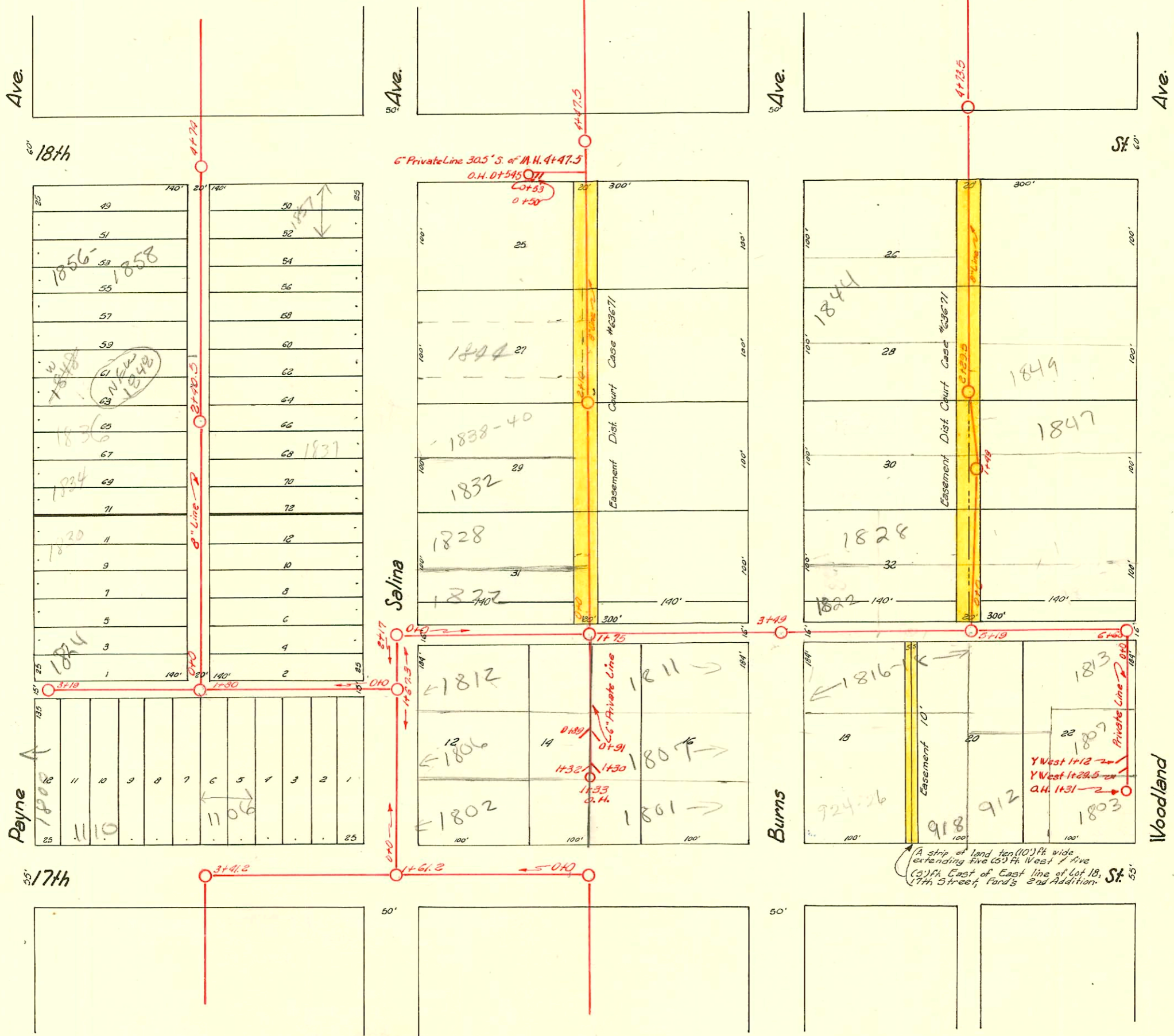


1-100

LAT. H - DIST. B - S.S. NO. 20
H. L. MILES
1927

See page 174 for blocks between Woodland & Payne from 18th to 19th Streets.



See page 172.

2001-03103-12/5/01- 1811 N Burns - Padgett Exc - Pipe Burst Replacement 4" PE SDR17 (on msmt) LTWINCO, 1H45, 1V45, 1H22, 1V22, dirt alley cut

N/C
 SWR 2002-01180 4/24/02 1848 N Payne - Mies: CITY WYE REPAIR - 4" PREDCO 51' N of MH 2+40.5 (2+91.5) 1V45, 1H45, 1H22 - Bsmnt - 4" 40 PVC
 N/C 2003-01173 5/2/03 1106 WITH N Royal Plbg - Fernco 2' from main 19'E of MH 1+80 (1+61) 2V45, 1TWIN CO, shadow, 4" 40 PVC

D-173A

CONSTRUCTION RECORD

SERVICE RECORD

STATION	ELEVATION		Depth	MANHOLE	4-INCH "Y" BRANCHES		No. of Permit		House Number		DATE OF PERMITS	
	Ground	Grade			North West	South East	North West	South East	North West	South East	North West	South East
0+0	121.14	111.47	9.67	0+0-M.H. in Salina								
1+0	121.64	111.57	10.07			0+26.5						
1+67.5	121.64	111.63	10.01	M.H. at Alley N								
2+17	121.89	111.69	10.20	M.H. at Alley E				#769	1812 Salina			6-24-43
0+0	121.89	111.69	10.20	0+0-Same M.H.								
1+0	121.45	111.79	10.66	1+75								
2+0	120.90	111.89	9.01					#20105103 #768	1811 R See Burns			12-5-01 6-29-43
3+0	120.75	111.99	8.76	M.H. in Burns	8+59			#847	1821 Burns			6-17-47
4+0	120.70	112.09	8.61		4+24			#37030 #1312	1818 Burns			2-5-73 9-17-29
5+0	120.45	112.19	8.26		5+19			#1311	918 W. 17th			9-17-29
6+0	120.05	112.29	7.76									
6+60	119.45	112.35	7.10	6+60				#3193	1837 Woodland			5-22-67
0+0	121.20	111.65	10.15	0+0-M.H. in Salina								
1+0	121.60	111.75	9.85					#289	1801 Salina			5-19-31
2+0	122.0	111.85	12.15					#932	1104 W. 17th			6-22-38
3+0	124.20	111.95	12.25					#1106 #110	W. 17th			6-24-94 3-17-47
3+19	123.70	111.97	11.73	3+19				#172	1108 W. 17th			3-21-49
0+0	124.07	112.83	11.24	0+0				#25670 #1082	1110 R W. 17th			7-9-90 2-25-42
1+0	123.77	112.93	10.84					#416	1800 Payne			9-20-50
2+0	122.97	113.03	9.94	2+40.5				#406	1824 Payne			7-29-48 9-1-67
3+0	122.87	113.13	9.74					#2771 #248	1828 Payne 1829 Salina			9-19-50 4-23-48 10-3-30
4+0	122.87	113.23	9.64					#2777 #225	1827 Payne 1836 Salina			1-29-65 7-16-47 5-12-39
0+0	120.80	111.89	8.91	0+0				#20627 #1720	1837 Payne			8-19-70 6-25-52
1+0	120.95	111.99	8.96					#426 #230	1848 Payne 1823 Salina			8-26-76 7-16-47 3-29-50
2+0	121.10	112.09	9.01	2+10				#1071	1849 Salina			12-18-47
3+0	121.01	112.19	8.82					#995074 #1013	1856 Payne 1852 Salina			3-24-99 3-21-59 5-5-47
4+0	121.07	112.29	8.78	4+47.5				#1012 #1853	1850 Payne 1857 Salina			5-21-59 5-5-47
1+0	120.95	111.99	8.96					#166	1822 Salina			10-13-48
2+0	121.10	112.09	9.01	2+10				#807	1827 Salina			7-21-92 5-17-49 9-26-47
3+0	121.01	112.19	8.82					#4006	1831 Burns			10-9-98 4-20-53
4+0	121.07	112.29	8.78	4+47.5				#1073	1837 Burns			10-3-28
1+0	120.95	111.99	8.96					#2927	1841 Burns			11-1-50
2+0	121.10	112.09	9.01	2+10				#466	1844 Salina			7-31-46
3+0	121.01	112.19	8.82					#6062 #325	1850 Burns 1843 Burns			7-31-70 1-28-58 4-8-29
4+0	121.07	112.29	8.78	4+47.5				#4994 #1869	1013 W. 17th			12-29-54 1-5-49

Continued on page 173-A

- #171-Private Line-1856 Salina-10-18-43-Frederick Pibg. Co. (connected at 0+53)
- #172-Private Line-1850 Salina-10-18-43-Frederick Pibg. Co. (connected at 0+50)
- #2493-Private Line-824 W. 17th-11-29-45-Ray Yackley Pibg.
- #2849-Tap-1820 N. Burns-Davidson-3-20-46
- #5628-Tap-1838-405 Salina-Frederick-7-15-15-Frederick
- #1973-Tap-1807 Woodland-8-16-50-J.C. Lansdowne (connected at 1+12 on Private Line)
- #1974-Private Line-connection at 1+29.5-1803 Woodland-8-16-50-J.C. Lansdowne
- #776-Private Line-1807 Burns-7-28-43-Wichita Pibg. Co. (connected at 0+91)
- #777-Private Line-1823 Burns-7-28-43-Wichita Pibg. Co. (connected at 1+30)
- #778-Private Line-1806 Salina-7-28-43-Wichita Pibg. Co. (connected at 0+89)
- #779-Private Line-1808 Salina-7-28-43-Wichita Pibg. Co. (connected at 1+32)
- #2466-Tap-1818 Burns-11-20-45-W.B. Carter
- #1820-Private Line-926 West 17th St-10-16-48-Collins Pibg. Co.
- #639-Tap-912-914 West 17th-9-19-46-Baker Pibg. Co.
- #690-Tap-1811-1813 Woodland-9-19-46-Baker Pibg. Co.
- #631-Tap-1815-1817 Woodland-9-19-46-Baker Pibg. Co.

#20324-Frederick Pibg. 7-31-70
 #B586-1824 Payne-Kennedy Pibg. 12-18-63-Tap (0+35)
 C3193-1837 Woodland-Yackley Willard-5-22-67 Tap (6+43.4) Addn

911100-R-Padgett Exc- 4" SCH 40 91' SOF MH 175(0+76)

CONSTRUCTION RECORD

SERVICE RECORD

STATION	ELEVATION		Depth	MANHOLE	4-INCH "Y" BRANCHES		No. of Permit		House Number		DATE OF PERMITS	
	Ground	Grade			North West	South East	North West	South East	North West	South East	North West	South East
0+0	120.56	112.24	8.32	0+0	0+42.5	0+40	# 2842	# 1141	1822 Burns	1837 Woodland	3-20-46	8-24-29
1+0	121.03	112.34	8.69	1+4.9	1+19.5	1+17	# 282	# 309	1834 Burns	1845 Woodland	4-1-29	8-18-30
2+0	121.12	112.44	8.68	2+29.5	2+23	2+20.5	# 817	# 1504 # 407	1840 Burns	1847 Woodland	7-5-29	11-21-29 8-12-37
3+0	120.89	112.54	8.35	3+13	3+48.5	3+45.5	# 818	# 11923 # 519	1844 Burns	1851 Woodland	7-5-29	11-23-29
4+0	119.73	112.64	7.09	4+73.5	4+90	4+87.5	# 42		1846 Burns	1855 Woodland	3-2-36	7-31-45
5+0	120.17	112.74	7.43									
<p>Note: Relocation of Part of Lat. H. Dist. R. S. S. #20 0+00 96.0 85.62 10.3 0+00² New 1+00 96.7 86.02 10.7 2+00 96.9 86.42 11.5 98.5 out 86.54 12.0 2+30⁵ 3+00 99.4 86.92 12.5 98.6 87.22 11.4 3+74² New</p>												
<p>B 12659 1828 Burns (Service) 11-24-40 (0769.0) (at 00) C12117-1828 N. Payne - 5-31-79 - Repair</p>												
<p>R #93-38876-7 - 1010 W 15th - 4" PVC 40 - Replaced all but lower 2' 2 stubouts 1/4" p# shallow</p>												

Between Burns & Woodland - Alley North of 17th St. to 18th St.

Note: See page p-171

B 12659 1828 Burns (Service) 11-24-40 (0769.0) (at 00)
 C12117-1828 N. Payne - 5-31-79 - Repair
 R #93-38876-7 - 1010 W 15th - 4" PVC 40 - Replaced all but lower 2'
 2 stubouts 1/4" p# shallow