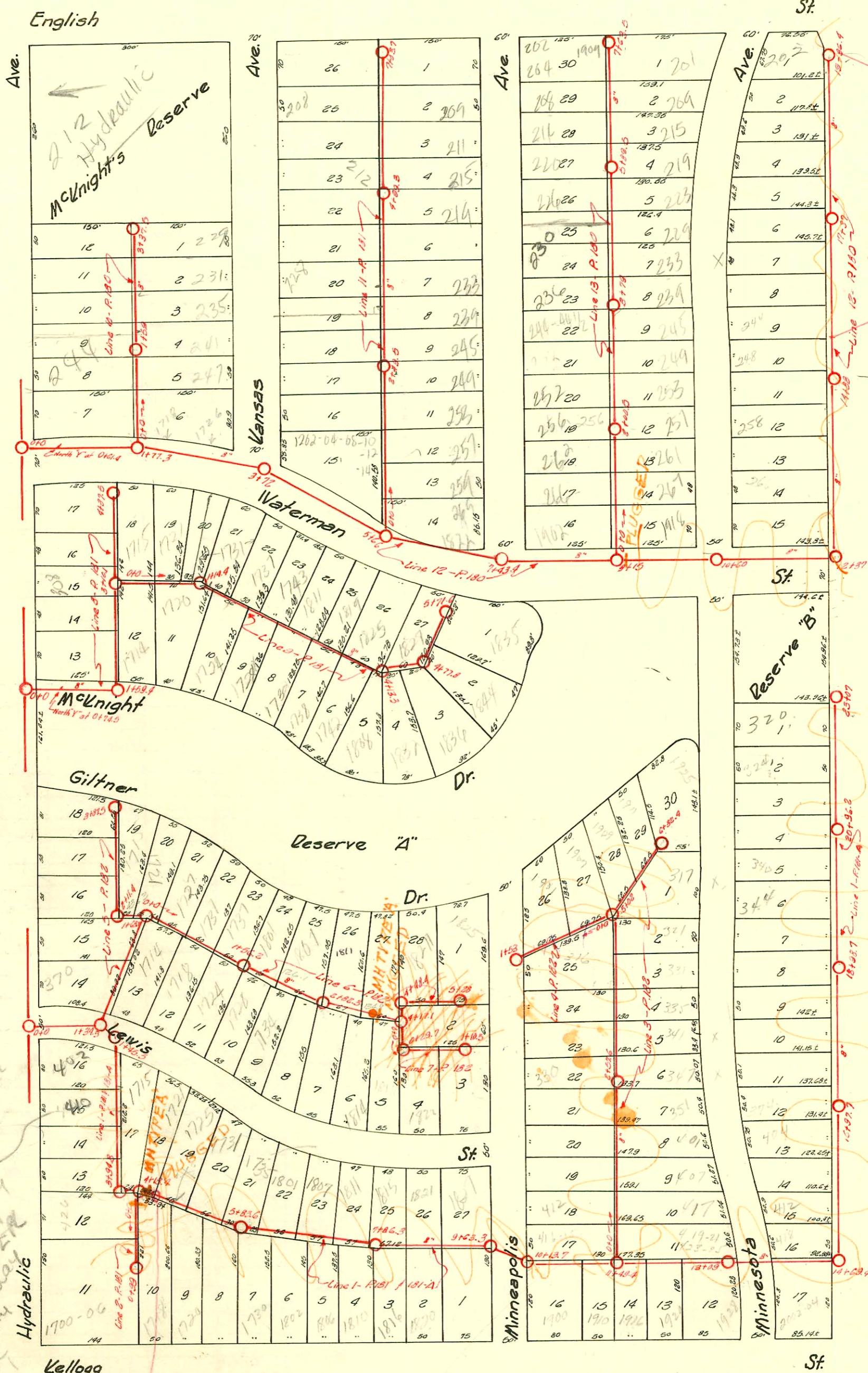


TRAP AREA

2=150



410 S. Hydraulic  
 Do NOT issue permit  
 To build any closer than 5' from city  
 Hydraulic  
 OR  
 9' from city  
 Per Bill  
 System  
 Sizing  
 Bl

LAT. 10 - S.S. NO. 20  
 DOBSON  
 1927

CHANGES BY STATE HWY DEPT  
 BOOKED 8-27-77 FROM AS BUILT PLAN

# 13-15004-7 4/4/95 - 1819 E. Waterman - No DL on site so inspector has no measurement. Replaced 10' at main - 4" Sch 40 PVC  
 2002-03173-111102-1718 E Waterman - Reddi Rootr - 4" PVC, 11 TWINS, 11/22, - New house trap, city repair 4" Predco SS. 7" N of MH

D-180

CONSTRUCTION RECORD

SERVICE RECORD

STATION	ELEVATION		Depth	MANHOLE	4-INCH "Y" BRANCHES		No. of Permit		House Number		DATE OF PERMITS			
	Ground	Grade			North West	South East	North West	South East	North West	South East	North West	South East	North West	South East
0+0	106.37	98.8	7.57	0+0	0+61.4									
1+0	105.08	98.9	6.12		West	East								
2+0	104.62	99.0	5.62	1+77.3	18+62.5	18+66								
3+0	106.32	99.1	7.22		+95	+98.5								
4+0	105.42	99.2	6.22	3+72	13+20.7	13+10.2								
5+0	105.72	99.3	6.42		+45.3	+42.8	#21930		265		11-30-70			
6+0	105.62	99.4	6.22	5+66	+71.9	+69.4	#2330		266	Minnesota	5-20-40			
7+0	105.02	99.5	5.52		+96.5	+94	#22175		262	Minnesota	12-10-70			
8+0	105.22	99.6	5.62	7+43.4	14+21.5	14+19	#1863				12-2-39			
9+0	104.92	99.7	5.22		+45.1	+42.6	#25714		258	Minnesota	6-23-71			
10+0	105.02	99.8	5.22	9+15	+70.7	+68.2	#2142				3-8-40			
11+0	105.42	99.9	5.52		+97.8	+95.3								
12+0	105.42	100.0	5.42	10+60	15+23.3	15+20.8	#23158		252	Minnesota	3-8-71			
					+50.3	+47.8	3677		254	Minnesota	6-13-41			
13+0	106.82	100.10	6.72	12+37	+75.5	+73	#20531		244	Minnesota	8-12-70			
					16+00.5	15+98	#2174				3-23-40			
14+0	107.22	100.2	7.02		+25.9	16+23.4	#20520		238	Minnesota	8-12-70			
					+51.9	+49.4	#2874		232	Minnesota	11-15-40			
15+0	107.72	100.3	7.42	14+88	+75.7	+73.2	#1833				9-21-39			
16+0	107.12	100.4	6.72		+87.5	17+25	#20519		232	Minnesota	8-12-70			
					+53.8	+51.3	#2726		254	Minnesota	8-12-70			
17+0	107.62	100.5	7.12		+79	+76.5					10-3-40			
18+0	108.12	100.6	7.52	17+37	18+03.5	18+01	#20517		214	Minnesota	8-12-70			
					+57.2	+54.7	#1420				3-22-39			
					+83.5	+81	#20516		214	Minnesota	8-12-70			
19+0	107.22	100.7	7.02		+33	+30.5	#1830		203	Minnesota	11-22-67			
					+55.5	+53	#1074		202	Minnesota	3-2-50			
19+86.4	107.52	100.79	6.73	19+86.4	+81	+78.5					2-3-38			
0+0	104.94	99.71	5.23	0+0	0+37.5	0+35	#1149		1912	Waterman	10-17-38			
					+62	+59.5								
1+0	105.72	99.81	5.91		+88.6	+86.1	#1152		1902	Waterman	10-19-38			
					+39.2	+36.7	#3256		266	Minnesota	9-26-38			
					+64.9	+62.3	#1902		267	Minnesota	3-31-41			
					+91.1	+88.6	#764		251	Minnesota	10-13-39			
2+0	106.32	99.91	6.41	2+00.5	2+14.7	2+12.2	#8195		257	Minnesota	3-23-38			
					+42.1	+39.6	#1063		256	Minnesota	4-8-40			
					+67.3	+64.8	#1586		258	Minnesota	8-31-38			
					+92.8	+90.3	#1801		253	Minnesota	5-23-39			
3+0	107.12	100.01	7.11		3+16.9	3+14.4	#2165		249	Minnesota	11-14-38			
					+44.2	+41.7	#1594		244	Minnesota	3-25-40			
					+70.2	+67.7	#2063		243	Minnesota	5-25-39			
					+95.5	+93	#1878		239	Minnesota	1-4-40			
4+0	107.51	100.11	7.40	3+79	4+21.3	4+18.8	#217		230	Minnesota	10-6-39			
					+46.7	+44.2	#1171		231	Minnesota	11-3-41			
					+72.5	+70					3-4-40			
					+98	+95.5	#1969		226	Minnesota	10-26-38			
5+0	106.82	100.21	6.61		5+24.3	5+21.8	#1172		229	Minnesota	11-11-39			
					+49.3	+46.8	#1259		233	Minnesota	10-26-38			
					+75.3	+72.8	#1994		220	Minnesota	11-8-39			
6+0	107.12	100.31	6.81	5+89.5	6+00.0	5+97.5	#1887		219	Minnesota	11-28-39			
					+25.6	+23.1	#2465		214	Minnesota	10-9-39			
					+51.4	+48.9	#1165		215	Minnesota	6-29-40			
					+79.6	+77.1	#2444		208	Minnesota	10-25-38			
7+0	106.92	100.41	6.51		7+05.5	7+03	#1224		209	Minnesota	6-24-40			
					+30.5	+28	#2137		202-204	Minnesota	11-29-38			
4+63.5	106.72	100.48	6.24	7+63.5	+53.9	+51.4	#1643		201	Minnesota	9-29-54			
0+0	104.57	99.0	5.23	0+0	0+34.1	0+31.6	#2003		178	Waterman	5-12-42			
					+59.9	+57.4	#2103		200	Hydraulic	11/21/03			
1+0	104.87	99.1	5.91		+84.9	+82.4	#20536		244	Hydraulic	9-29-30			
					+10.5	+8	#293		247	Hydraulic	4-22-88			
					+35.9	+33.4	#589		240	Hydraulic	6-1-28			
					+71.5	+69	#1012		241	Hydraulic	12-6-40			
					+97.7	+95.2	#565		236	Hydraulic	7-27-38			
2+0	105.17	99.2	6.22		2+23.1	2+20.6	#560		235	Hydraulic	5-25-28			
					+48	+45.5	#300		230 S. Hyd.	235 S.	10-6-66			
3+0	105.37	99.3	6.02		+71.5	+69	#299		228	Hydraulic	5-24-28			
					+97.3	+94.8	#53		220 S. Hyd.	221	2-15-29			
4+37.5	105.37	99.34	6.02	3+37.5	3+25.3	3+22.8			226	Hydraulic	3-28-28			

Line 12

Line 13

Line 10

#1812-Top-204 S. Kansas-Home Builders Pkg. Co.-9-4-29  
 #909-Top-1726 E. Waterman-Stimmens Pkg. Co.-9-29-30  
 #256-Top-220 S. Hydraulic-1-23 Hanna-5-8-31  
 #826-Top-260 S. Minneapolis-Pray Pkg.-9-20-38  
 #925-Top-1715 E. Lewis-F. B. Watson-7-17-39  
 #1009-Top-2002 E. Waterman-Creed-7-26-38  
 #1159-Top-241 S. Kansas-10-24-28-Burgan  
 #8128-Top-241 S. Minneapolis-12-18-40-Charley Pkg.-10-16-70  
 #2344-Top-236 S. Minneapolis-11-6-40-Chester Davidson  
 #880-Top-228-230 S. Kansas-Frederick Pkg.-5-23-43  
 #3772-Top-1822-14 E. Waterman-1-25-51-Max Hinshaw  
 #3997-Top-228 S. Minnesota-3-2-51-Lendall  
 #11772-Top-202 S. Minnesota-private line connection-Al Henning 11-2-59 (9+55.5)  
 #11773-Top-202 S. Minnesota-"  
 #14841-Top-1720 E. Kellogg-Dene Curtis Pkg.-10-17-61 (5+00.4) Seal off C2193 - 2-1 Rutledge 11-30-70  
 #2682 Seal off-202 S. Minnesota-(2 trunks on line) Al Henning - 4-13-67 (9+55.5)  
 Tap # C6964 - 1726 E. Waterman - 2-20-68 - Al Henning (2+63.3)  
 + 222 87-12-22-85 212 S. Hydraulic - N.C. - Tapped MH 3+27.5 on Line 10

2002-01512-5129102-1731 E Water man - Potomac Rooter - Pipe burst replacement (no ment provided)  
4" PESDR17, 3H22, 27W10 00, 1 Y

D-181

CONSTRUCTION RECORD

SERVICE RECORD

STATION	ELEVATION		Depth	MANHOLE	4-INCH "Y" BRANCHES		No. of Permit		House Number		DATE OF PERMITS	
	Ground	Grade			North West	South East	North West	South East	North West	South East	North West	South East
0+0	105.64	99.40	6.24	0+0	0+27.5 N	0+48.5 E	# 2329		1828			6-5-40
					+58.3	+48.3	# 136		249			4-7-37
					+77.8	+75.3			247			
1+0	105.74	99.50	6.24		1+02.5	1+00	# 1323		S. Minneapolis			3-20-39
					+28.1	+25.6	# 4107		257 R			3-24-95
					+53.9	+51.3	# 1326		S. Minneapolis			1-26-39
					+78.7	+77.2	# 21714		249			10-30-64
2+0	105.84	99.60	6.24		2+06.4	2+03.9	# 1027		249			10-15-56
				2+49.5	+32.3	+28.8	# 984		245			
					+60.6	+58.1			S. Minneapolis			7-14-38
					+86.	+83.5			230			
3+0	105.54	99.70	5.84		3+10.9	3+08.4	# 813		S. Kansas	S. Minneapolis	10-18-46	6-2-48
					+35.7	+33.2	# 1580		233			
					+66	+63.5			S. Minneapolis			6-2-44
					+88	+86.3			224			
4+0	107.34	99.80	7.54		4+14.6	4+12.1	# 143		S. Kansas	S. Minneapolis	3-11-29	1-13-42
					+40.3	+37.8	# 2406		225			
					+65.6	+63.1	# 1335		S. Kansas	12-21-28		6-11-40
				4+99.3	+90.7	+88.2	# 3179		212			
5+0	106.54	99.90	6.64		5+15.5	5+13	# 1189		S. Kansas	11-10-28		
					+40.8	+38.3	# 4107		213			8-20-41
					+64	+61.5	# 616		S. Kansas	6-8-28		
6+0	105.94	100.0	5.94		6+15.3	6+12.8	12319		208			2-16-60
					+40.6	+38.1			212			
7+0	106.34	100.1	6.24		+66.2	+63.7			201			
	+0.3.7	100.11		7+03.7	+91.5	+89	# 163		S. Minneapolis			3-13-29
0+0	105.87	98.50	7.37	0+0	1+8.2 W		# 1165		323			11-2-28
					2+06.8				S. Hyd.			
1+0	105.67	98.60	7.07		+31.4		# 1164		320			11-2-28
				1+59.4	+57.6				S. Hyd.			
2+0	104.47	98.70	5.77		+34.1							
				3+10.1	3+06.6							
3+0	105.17	98.80	6.37		+30.6		# 880		306			8-13-28
					2+53.7		# 1811		S. Hyd.	1715		8-31-39
4+0	104.97	98.90	6.07		4+81.3	3+87.5			E. Waterman			
					4+07.2		# 92785-7		308-304			5-27-42
+37.5	105.17	98.94	6.23	4+37.5	+30.8		# 821		S. Hyd. R			8-3-28
0+0	105.13	98.82	6.31	0+0	0+22.1 N	0+19.6 S			1721			9-12-40
					+77.6 N	+45.1 S	# 2660		E. Waterman	1720		
					+72.8	+70.3	# 733		1730			4-1-38
1+0	105.13	98.92	6.21		+98.6	+96.1	# 952		1734			7-5-38
				1+14.4	1+25.8	1+23.3	# 1679		1737			6-23-39
					+51.6	+49.1	# 830		E. Waterman	1733		4-23-38
					+76.7	+74.2	# 1427		1743			4-3-39
2+0	104.83	99.02	5.81		2+03.5	2+01			E. Waterman			
					+27.5	+25	# 1602		1811			5-26-39
					+52.7	+50.2	# 934		1738			6-24-38
					+78.1	+76.6	# 734		E. Waterman	1819		3-9-38
3+0	104.73	99.12	5.61		3+04.3	3+01.8	# 1645		1738 R			12-14-45
					+27.3	3+24.8	# 59		1738			3-2-37
					+53.6	3+51.1	# 734		1738			8-19-77
					+79.6	3+77.1	# 115		E. Waterman	1745		6-15-39
4+0	104.63	99.22	5.41	4+13.3	4+04.5	4+02	# 776		1825			3-28-38
					+41.6	+39.1	# 737		Waterman	1825		7-21-30
				4+77.8	+67.5	+65	# 377		McKnight	1825		3-11-37
					5+02.5 W	5+00 E	# 143		1825			5-20-38
					+26.8 W	+24.3 E	# 1708		1835			7-2-35
5+0	104.63	99.32	5.36		+52.5 W	+50 E	# 1708		E. Waterman			7-21-50
+71.6	104.83	99.39	5.44	5+71.6			# 160		469			10-4-72
0+0	107.14	98.61	8.53	0+0	0+15 W		# 160		S. Hyd.			4-15-37
					+40							
					+66.6		# 25315		1700-06			7-6-71
1+0	107.34	98.71	8.63	0+99	+88.3		# 185		C. Kellogg			3-6-28
0+0	106.27	98.20		0+0	1+83.7 W		# 659		42			12-27-37
					2+10		# 367		S. Hyd.			4-12-28
1+0	108.14	98.30		1+30.5	+36				430			
				1+45.5	+62.1				S. Hyd.			
2+0	107.84	98.40			+86.5							
					3+12.7							
3+0	107.54	98.50			+37.6		# 1802		446			3-18-48
				3+94.8	+62.6				S. Hyd.			

Con't top of page 181-A

Line 11 plat on p. 180

Line 8 plat on p. 180

Line 9 plat on p. 180

Line 2 plat on p. 180

Line 1 plat on p. 180

# 73 - Top - 308 S. Hydraulic - 6-18-29 - Home Builders' Plbg. Co.  
 R # 883 - Top - 1714 McKnight - 5-25-38 - Frederick Plbg. Co. See next pg  
 # 748 - Top - 1731 E. Waterman - 3-15-38 - Cherry Plbg. Co.  
 # 2227 - Top - 250-52 S. Kansas - 10-30-64 (1+66)  
 C 62651 - Top - 1825 E. Waterman - 8-22-77 - C.L. Rutledge - (3+55.5)  
 C 63070 - 253 S. Minneapolis - 8-25-28 (1+18.5)



CONSTRUCTION RECORD

SERVICE RECORD

STATION	ELEVATION		Depth	MANHOLE	4-INCH "Y" BRANCHES		No. of Permit		House Number		DATE OF PERMITS	
	Ground	Grade			North West	South East	North West	South East	North West	South East	North West	South East
4+0	107.14	98.60	8.54	4+18.4	4+46.6 N +64 ✓ +89	4+44.1 S +61.5 +86.5 W	# 2492 C 32978 3412		1721 E Lewis 1725		7-11-40 6-16-77 9-26-60	
5+0	107.18	98.70	8.48		5+10.3 +39.8 +63.7 +95.1	5+12.8 +37.3 +63.2 +92.6 ✓	# 30643 1008 # C 20835 482 # C 20859 812		1723 E. Lewis 1728 1729 E. Kellogg 1730 E. Kellogg 1801 E. Lewis 1735 S.O E. Lewis		2-25-49 7-23-38 9-4-90 5-2-28 9-1-70 3-21-29	
6+0	107.48	98.80	8.68	5+83.6	6+19.8 +46.6 +78 +98.1	6+17.3 +44.1 +69.5 +95.6	# C 29906 1435 # 1168 1113	# 15520 647	1801 E. Lewis 1735 S.O E. Lewis		1-11-72 4-4-38 9-5-72 9-23-38	8-21-69 6-4-29
7+0	107.48	98.90	8.58		7+23.7 +42.6 +67.6 +98.5	7+21.2 +40.1 +65.1 +96	# 34684 471 # 29944 557 # 21251 2343	# 15521 646	1807 E. Lewis 1811 E. Lewis 1815 E. Lewis		9-5-72 11-4-36 1-11-72 12-26-37 10-8-70 5-27-40	8-21-69 6-4-29 8-21-69 3-13-29 8-27-69 8-28-30
8+0	107.48	99.0	8.48		8+20.7 +45.6 +68.6 +94.6	8+18.2 +43.1 +66.1 +92.1	# C 11568 1771	# 15523 844	1821-23 E. Lewis 1820 E. Kellogg		11-18-68 12-31-29	8-21-69 10-16-35
9+0	107.18	99.1	8.08		9+19.5 +63.3 +81.1 +105.9	9+17 +27.3 +55.1 +78.6	# 1214 # 15525 113 # 2817	# 15524 43	1827 E. Lewis 1900 E. Kellogg 1914 E. Kellogg		7-8-69 11-23-38 8-21-69 9-25-46 10-20-50	8-21-69 8-10-30
10+0	107.19	99.2	7.99	10+13.7	+57.6 +81.1 +105.9	+55.1 +78.6 +103.4	# 15525 113 # 2817	# 15527 79	1914 E. Kellogg 1910 E. Kellogg		8-21-69 9-25-46 10-20-50	9-17-30
11+0	107.20	99.3	7.90	11+49.4	+31.6 +60 +86.6	+29.1 +57.5 +84.1		# 870 # 15527 79	1914 E. Kellogg 1910 E. Kellogg		9-17-30 8-21-69 2-17-30	
12+0	107.50	99.4	8.10		12+11.1 +36.3 +63.8 +86.1	12+08.6 +33.8 +61.3 +83.6		# 1354 # 18943	1920 E. Kellogg 423-25 S. Minnesota		12-31-28 4-23-70	
13+0	108.16	99.5	8.66	13+09	+79 +105.1 +30.7 +56.6	+76.5 +102.6 +28.2 +54.1		# 16489 1912	422 S. Minnesota E. Kellogg		12-27-69 3-27-39	
14+0	108.60	99.6	9.0		+30.7 +56.6	+28.2 +54.1		# 11571 139 # 2264	416 418 S. Minnesota 418 S. Minnesota		11-18-68 3-10-42 11-18-68 4-26-40	
15+0	108.02	99.7	8.32	14+69.4	+26.8 +52.6 +78.6			# 11571 139 # 2264	416 418 S. Minnesota 418 S. Minnesota		11-18-68 3-10-42 11-18-68 4-26-40	
16+0	108.32	99.8	8.52		16+04 +29.4 +52.4 +77.8			# 11571 139 # 2264	416 418 S. Minnesota 418 S. Minnesota		11-18-68 3-10-42 11-18-68 4-26-40	
17+0	108.32	99.9	8.42	16+97.7	17+04.7 +73.5 +55 +80.2			# 11571 139 # 2264	416 418 S. Minnesota 418 S. Minnesota		11-18-68 3-10-42 11-18-68 4-26-40	
18+0	108.22	100.0	8.22		18+23.4 +30.5 +56.6 +82.1			# 11571 139 # 2264	416 418 S. Minnesota 418 S. Minnesota		11-18-68 3-10-42 11-18-68 4-26-40	
19+0	108.42	100.1	8.32	18+98.7	19+07 +33.2 +60.1 +87.1			# 11571 139 # 2264	416 418 S. Minnesota 418 S. Minnesota		11-18-68 3-10-42 11-18-68 4-26-40	
20+0	108.72	100.2	8.52		20+13.2 +37.3 +62.8 +89.1			# 11571 139 # 2264	416 418 S. Minnesota 418 S. Minnesota		11-18-68 3-10-42 11-18-68 4-26-40	
21+0	108.42	100.3	8.12	20+96.2	21+11.9 +37.6 +62.5 +87.6			# 11571 139 # 2264	416 418 S. Minnesota 418 S. Minnesota		11-18-68 3-10-42 11-18-68 4-26-40	
22+0	108.02	100.4	7.62		22+13.3 +39.5 +64.6			# 11571 139 # 2264	416 418 S. Minnesota 418 S. Minnesota		11-18-68 3-10-42 11-18-68 4-26-40	
23+0	109.22	100.5	8.72	23+07	+89.7			# 11571 139 # 2264	416 418 S. Minnesota 418 S. Minnesota		11-18-68 3-10-42 11-18-68 4-26-40	
+07	109.22	100.51	8.71					# 11571 139 # 2264	416 418 S. Minnesota 418 S. Minnesota		11-18-68 3-10-42 11-18-68 4-26-40	

# 945-120-352 S. Hydraulic - E. E. 42 - C. Davidson  
 # 946-120-362 S. Hydraulic - E. E. 42 - C. Davidson  
 # 2816-120-419 S. Minnesota - 10-20-50 - Harry Mann  
 # 4445-120-1928 E. Kellogg - 4-24-51 - J. N. Hanna  
 C 18942 - Seal off - C. L. Rutledge - 4-23-70 (11+97.4)  
 C 22894 - Seal off - C. L. Rutledge - 2-10-71 (12+53)  
 C 16491 - 1916 E. Kellogg - Seal off - Ark Valley Sewer Service - 10-27-69



D-182

Form 41-(54) 12-54

CONSTRUCTION RECORD

SERVICE RECORD

STATION	ELEVATION		Depth	MANHOLE	4-INCH "Y" BRANCHES		No. of Permit		House Number		DATE OF PERMITS	
	Ground	Grade			North West	South East	North West	South East	North West	South East	North West	South East
0+0	108.04	98.30	9.70	0+0: <sup>A.H. 1634.5 on Line 1, to Lewis.</sup>	0+33.5 W	0+31 E						
					+59.3	+56.8						
					+84.6	+82.1						
1+0	108.44	98.44	10.0		1+10	1+07.5						
					+36.9	+34.4						
				Turn West 1+63.1	+63.9 W	+61.4						
2+0	108.44	98.54	9.90		+79.5 N							
					2+03.6 N							
				Turn North 2+11.4	+4.3 W							
					+63.6	2+73.5	#1370		1721 Giltner			3-8-39
3+0	107.84	98.64	8.60		+91.4							
					3+17.1							
	+87.5	106.14	98.73	7.41	+41.6				1801 Giltner			9-4-29
					3+87.5	+67.7	#1218					
0+0	108.60	98.52	10.08	0+0: <sup>A.H. 1634.1 on Line 1, to Lewis.</sup>	0+20.5 N	0+18 S						
					+46.7	+44.2	#332		1727 Giltner			10-14-37
					0+72	+69.5	#153		1731 Giltner			2-26-30
					+96.7	+94.2	#96		1718 G. Lewis			3-22-37
1+0	108.90	98.62	10.28		1+22.7	1+20.2	#51	#929	1737 Giltner	1784 G. Lewis		3-25-32 6-20-38
				1+56.2	+50	+47.5						
					+74.3	+71.8	#354		1728 G. Lewis			7-15-37
					2+00.3	1+97.8	#13		1801 Giltner			3-31-37
2+0	108.30	98.72	9.58		+26.3	2+23.8	#2316D		1807 Giltner			9-25-39
					2+52.9	+50.4	#31					9-7-31
					2+82.3	+77.7	#31					4-17-72
3+0	108.50	98.82	9.68		3+19		#1734		1804 G. Lewis			5-31-28
					3+50.9	+48.4	#6186		1814 G. Lewis			6-12-28
					+76.6	+74.1						7-7-38
4+0	108.70	98.92	9.78	4+17.1 Turn North	4+01.2	3+98.7	#2316D		1815 Giltner			12-20-72
				4+48.4 Turn East	+75.9	4+73.9	#162		1821 Giltner			3-31-37
5+0	108.60	99.02	9.58		5+00.6	4+98.1	#31		1825 Giltner			4-16-37
	+88	108.50	99.05	9.45	5+28	+85.5	#31					3-1-55
0+0	108.70	98.94	9.76	0+0: <sup>A.H. 1634.1 on Line 1, to Lewis.</sup>	0+41.8 N	0+39.3 S	#2451		1824 G. Lewis			5-24-71
					+67.6	+65.1	#412					8-14-37
1+0	108.40	98.04	9.36	0+29.7 Turn East	+92.7	+90.2	#33449		329 Minneapolis			8-25-72
	+10.5	108.50	99.05	9.45	1+05.5	1+03	#2305		321 Minneapolis			5-19-72
0+0	107.20	98.35	7.85	0+0	0+17.5 W	0+15 E	#11570		412 Minneapolis			11-18-68
					+42	+39.5	#1566		415 Minneapolis			5-15-39
					+67.8	+65.3						7-8-39
1+0	107.32	99.45	7.87		+83.7	+94.8	#21290		407 Minnesota			10-8-70
					1+22.5	1+20	#5103					2-27-43
					+47.7	+45.2	#14631		378 Minneapolis			1-24-69
					+73.5	+71	#14631		301 Minnesota			10-14-29
					+98.1	+95.6	#16488		301 Minnesota			10-27-69
2+0	107.42	99.55	7.87		2+23.3	2+20.8	#11569		376 Minneapolis			11-18-68
				2+57.5	+46.3	+43.8	#11569		301 Minnesota			6-17-29
					+75.2	+72.7	#11569		301 Minnesota			6-19-39
3+0	107.52	99.65	7.87		3+00.7	2+98.2	#11569		301 Minnesota			11-18-68
					+26.4	3+23.9	#11569		301 Minnesota			12-31-37
					+51.2	+48.7	#11569		301 Minnesota			1-16-70
					+76.9	+74.4	#11569		301 Minnesota			8-14-40
4+0	107.82	99.75	8.07		4+02.5	4+0	#11569		301 Minnesota			12-29-70
					+27.9	+25.4	#11569		301 Minnesota			7-18-30
					+56.1	+53.6	#11569		301 Minnesota			1-16-70
5+0	108.02	99.85	8.17	5+02	+82	+79.5	#11569		301 Minnesota			12-31-37
					+52.9	+50.4	#11569		301 Minnesota			8-14-40
					+78.2	+75.7	#11569		301 Minnesota			1-16-70
6+0	108.52	99.95	8.57		6+02.5	6+00	#11569		301 Minnesota			12-29-70
	+32.4	108.62	99.98	8.64	6+32.4	+22.5	#11569		301 Minnesota			1-16-70
0+0	108.02	99.85	8.17	0+0: <sup>A.H. 1634.1 on Line 1, to Lewis.</sup>	0+13.2 N	0+10.7 S	#11569		301 Minnesota			12-29-70
					+38.5	+36	#11569		301 Minnesota			1-16-70
					+65.5	+63	#11569		301 Minnesota			8-14-40
					+90.7	+88.2	#11569		301 Minnesota			1-16-70
1+0	107.92	99.95	7.97		1+15.2	1+12.7	#11569		301 Minnesota			12-31-37
	+53	108.12	100.00	8.12	1+53	+40.8	#11569		301 Minnesota			8-14-40
						+33.3	#11569		301 Minnesota			1-16-70

Line 5  
Plat on p. 180.

Line 6  
Plat on p. 180.

Line 7  
Plat on p. 180.

Line 3  
Plat on p. 180.

Line 4  
Plat on p. 180.

#190 - Top 908 S. Minneapolis - 8-25-52 - Eugene Reynolds  
 #308 - Top 316 S. Minneapolis - 6-18-37 - John Riadel - 5/04/70 (at 73)  
 #836 - Top 370 S. Hydraulic - 6-2-38 - Brodie  
 #9 - Top - 1715 Giltner - Cherry Pkg Co. (Connected North of A.H. 2+11.4) - 19-38  
 #2 - Top - 1734 E. Lewis - 8-1-38 - F.R. Hayes Pkg. Co.