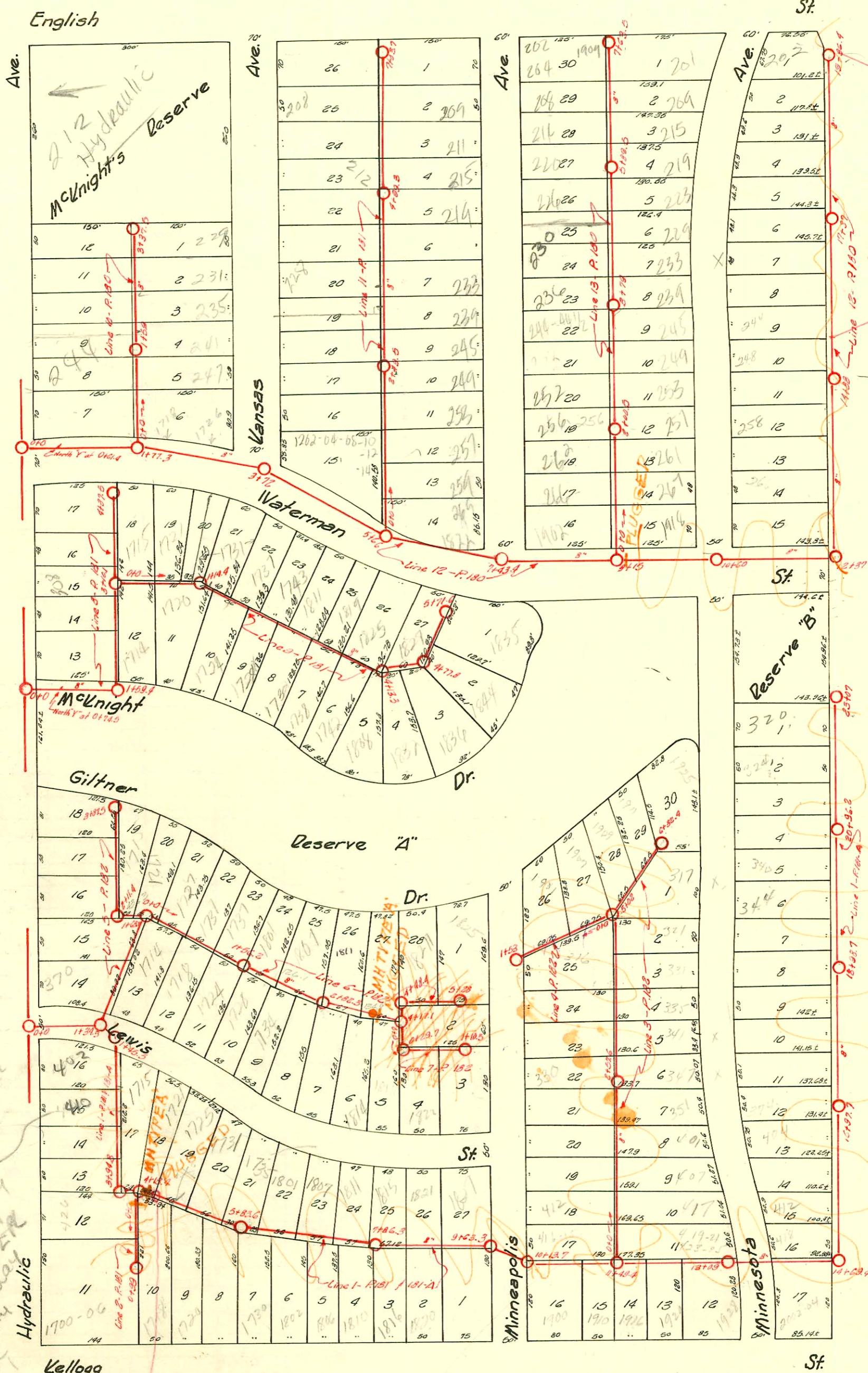


TRAP AREA

2=150



410 S. Hydraulic  
 Do NOT issue permit  
 To build any closer than 5' from city  
 Hydraulic  
 OR  
 9' from city  
 Per Bill  
 System  
 Sizing  
 BR

LAT. 10 - S.S. NO. 20  
 DOBSON  
 1927

CHANGES BY STATE HWY DEPT  
 BOOKED 8-27-77 FROM AS BUILT PLAN

# 13-15004-7 4/4/95 - 1819 E. Waterman - No DL on site so inspector has no measurement. Replaced 10' at main - 4" Sch 40 PVC  
 2002-03173-111102-1718 E Waterman - Reddi Rootr - 4" PVC, 11 TWINS, 11/22, - New house trap, city repair 4" Predco SS. 7" N of MH

D-180

CONSTRUCTION RECORD

SERVICE RECORD

STATION	ELEVATION		Depth	MANHOLE	4-INCH "Y" BRANCHES		No. of Permit		House Number		DATE OF PERMITS			
	Ground	Grade			North West	South East	North West	South East	North West	South East	North West	South East	North West	South East
0+0	106.37	98.8	7.57	0+0-176.22 Main	North West +61.4									
1+0	105.08	98.9	6.12		West	East								
2+0	104.62	99.0	5.62	1+77.3	12+62.5	12+66								
3+0	106.32	99.1	7.22		+95	+98.5								
4+0	105.42	99.2	6.22	3+72	13+20.7	13+10.2								
5+0	105.72	99.3	6.42		+43.3	+42.8	#21930 2330		265 Minnesota		11-30-70 5-20-40			
6+0	105.62	99.4	6.22	5+66	+71.9	+69.4								
7+0	105.02	99.5	5.52		+96.5	+94	#22175 1863		262 Minnesota		12-10-70 12-2-39			
8+0	105.22	99.6	5.62	7+43.4	14+21.5	14+19								
9+0	104.92	99.7	5.22		+45.1	+42.6	#25714 2142		258 Minnesota		6-23-71 3-8-40			
10+0	105.02	99.8	5.22	9+15	+70.7	+68.2								
11+0	105.42	99.9	5.52		+97.8	+95.3								
12+0	105.42	100.0	5.42	10+60	15+23.3	15+20.8	#23158 3677		252- 254 Minnesota		3-8-71 6-13-41			
13+0	106.82	100.10	6.72	12+37 Turn North	+50.3	+47.8	#20531 2174		244 Minnesota		8-12-70 3-23-40			
14+0	107.22	100.2	7.02		+25.9	16+23.4	#20520 2874		238 Minnesota		8-12-70 11-15-40			
15+0	107.72	100.3	7.42	14+88	+51.9	+49.4	1833		232 Minnesota		9-21-39			
16+0	107.12	100.4	6.72		+75.7	+73.2	#20519		232 Minnesota		8-12-70			
17+0	107.12	100.4	6.72		+27.5	17+25	#20518 2726		254 Minnesota		8-12-70 10-3-40			
18+0	107.62	100.5	7.12	17+37	+79	+76.5								
18+0	108.12	100.6	7.52		18+03.5	18+01	#20517 1420		212 (218) Minnesota		8-12-70 3-22-39			
19+0	107.22	100.7	7.02		+57.2	+54.7	#20516 2130		214 Minnesota		8-12-70 3-13-40			
19+0	107.22	100.7	7.02		19+07.5	19+05	#25928 1830		203 Minnesota		11-22-67 3-2-50			
19+86.4	107.52	100.79	6.73		+33	+30.5	#20515 1074		202 Minnesota		2-3-38			
19+86.4	107.52	100.79	6.73	19+86.4	+81	+78.5								
0+0	104.94	99.71	5.23	0+0-176.22 Main	0+37.5	0+35	#1149		1912 Waterman		10-17-38			
1+0	105.72	99.81	5.91		+62	+59.5	#1152		1902 Waterman		10-19-38			
1+0	105.72	99.81	5.91		+88.6	+86.1	#2256	#9287 1902	266 Minnesota	267 Minnesota	9-26-83 10-13-39			
2+0	106.32	99.91	6.41	2+00.5	+39.2	+36.7	#164		251 Minnesota		3-23-38			
2+0	106.32	99.91	6.41	2+00.5	+64.9	+62.3		#2195	257 Minnesota		4-8-40			
2+0	106.32	99.91	6.41	2+00.5	+91.1	+88.6	#1063		256 Minnesota		8-31-38			
3+0	107.12	100.01	7.11		+42.1	+39.6	#1586	#1801	258 Minnesota	253 Minnesota	5-23-39 11-14-38			
3+0	107.12	100.01	7.11		+67.3	+64.8	#2165		259 Minnesota		3-25-40			
3+0	107.12	100.01	7.11		+92.8	+90.3	#1594		244 Minnesota	243 Minnesota	5-25-39			
3+0	107.12	100.01	7.11		+44.2	+41.7	#2063		259 Minnesota		1-4-40			
3+0	107.12	100.01	7.11		+70.2	+67.7		#1878	259 Minnesota		10-6-39			
4+0	107.51	100.11	7.40	3+79	+95.5	+93	#1717	#171	230 Minnesota	231 Minnesota	11-3-41 3-4-40	10-26-39		
4+0	107.51	100.11	7.40		+421.3	4+18.8	#1969	#1172	226 Minnesota	229 Minnesota	11-11-39 10-26-38			
4+0	107.51	100.11	7.40		+46.7	+44.2	#1959	#1259	233 Minnesota		11-8-39			
4+0	107.51	100.11	7.40		+72.5	+70	#1994		220 Minnesota		11-28-39			
5+0	106.82	100.21	6.61	5+89.5	+75.3	+72.8	#1887		219 Minnesota		10-9-39			
5+0	106.82	100.21	6.61	5+89.5	+25.6	5+97.5	#2465	#1165	214 Minnesota	215 Minnesota	6-29-40 10-25-38			
5+0	106.82	100.21	6.61	5+89.5	+51.4	+48.9	#2444		208 Minnesota		6-24-40			
5+0	106.82	100.21	6.61	5+89.5	+79.6	+77.1	#1824		209 Minnesota		11-29-38			
5+0	106.82	100.21	6.61	5+89.5	+30.5	+28	#2137	#1643	202-204 Minnesota	201 Minnesota	9-29-54 6-13-39			
5+0	106.82	100.21	6.61	5+89.5	+63.5	+61								
0+0	104.57	99.0	5.23	0+0-176.22 Main	0+34.1	0+31.6	#2003 210	#2003 210	200 Hydraulic	178 Waterman	11/2103 9-29-30			
1+0	104.87	99.1	5.91		+59.9	+57.4	#20536 230	#2936	244 Hydraulic	247 Kansas	4-22-88 6-1-28	12-6-40		
1+0	104.87	99.1	5.91		+84.9	+82.4	#589	#1012	240 Hydraulic	241 Kansas	6-1-28 7-27-38			
1+0	104.87	99.1	5.91	1+59	+71.5	+69	#565		236 Hydraulic		5-25-28			
2+0	105.17	99.2	6.22		+97.7	+95.2	Tap #24660	#54	228 Hydraulic	235 Kansas	10-6-66			
2+0	105.17	99.2	6.22		+23.1	2+20.6	#560	#300	228 Hydraulic	230 Kansas	5-24-28 2-15-29			
2+0	105.17	99.2	6.22		+71.5	+69	#299	#53	226 Hydraulic	221 Kansas	3-28-28 2-15-29			
3+0	105.37	99.3	6.07	3+37.5	+97.3	+94.8								
3+0	105.37	99.3	6.07	3+37.5	+25.3	3+22.8								

Line 12

Line 13

Line 10

#1812-Top-204 S. Kansas-Home Builders Pkg. Co.-9-4-29  
 #909-Top-1726 E. Waterman-Stimmens Pkg. Co.-9-29-30  
 #256-Top-220 S. Hydraulic-1-23 Hanna-5-8-31  
 #826-Top-260 S. Minneapolis-Pray Pkg.-9-20-38  
 #925-Top-1715 E. Lewis-F. B. Watson-7-17-39  
 #1009-Top-2002 E. Waterman-Creed-7-26-38  
 #1159-Top-241 S. Kansas-10-24-28-Burgan  
 #8128-Top-241 S. Kansas-10-24-28-Burgan  
 #2344-Top-236 S. Minneapolis-11-6-40-Chester Davidson  
 #880-Top-228-230-S. Kansas-Frederick Pkg.-5-23-43  
 #3772-Top-1822-14 E. Waterman-1-25-51-Max Hinshaw  
 #3997-Top-228 S. Minnesota-3-2-51-Lendall  
 #11772-Top-1726 E. Waterman-202 S. Minnesota-private line connection-Al Henning 11-2-59 (9+55.5)  
 #11773-Top-1726 E. Waterman-202 S. Minnesota-private line connection-Al Henning 11-2-59 (9+55.5)  
 #14841-Top-1720 E. Kellogg-Dene Curtis Pkg.-10-17-61 (5+00.4) Seal off (2.193) - J. L. Rutledge 11-30-70  
 #2682 Seal off-202 S. Minnesota (2 trunks on line) Al Henning - 4-13-67 (9+55.5)  
 Tap #C6964-1726 E. Waterman-2-20-68-Al Henning (2+63.3)  
 #22282-12-22-85 212 S. Hydraulic-M.C.-Tapped MH 3+27.5 on Line 10

2002-01512-5129102-1731 E Water man - Potomac Rooter - Pipe burst replacement (no ment provided)  
4" PESDR17, 3H22, 27W10 00, 1 Y

D-181

CONSTRUCTION RECORD

SERVICE RECORD

STATION	ELEVATION		Depth	MANHOLE	4-INCH "Y" BRANCHES		No. of Permit		House Number		DATE OF PERMITS	
	Ground	Grade			North West	South East	North West	South East	North West	South East	North West	South East
0+0	105.64	99.40	6.24	0+0	0+27.5 N	0+85 E	# 5359	# 136	1828 E. Waterman 249 S. Minneapolis		6-5-40	4-7-37
1+0	105.74	99.50	6.24		+58.3 +77.8 1+02.5	+48.8 +75.3 1+00	# 1323		247 S. Minneapolis		3-20-39	
2+0	105.84	99.60	6.24	2+49.5	+28.1 +53.0 +78.7	+25.6 +51.3 +77.2	# 1027	# 1173	257 R S. Minneapolis 249 S. Minneapolis	10-30-64 18-15-56	3-24-95 1-26-39	10-27-38
3+0	105.54	99.70	5.84		3+10.9 +35.7 +66	3+08.4 +33.2 +63.5	# 813	# 126	230 S. Kansas 233 S. Minneapolis		10-18-46	6-2-48
4+0	107.34	99.80	7.54	4+99.3	+88 +40.3 +65.6	+86.3 +37.8 +63.1	# 143	# 863 # 2406	224 S. Kansas 225 S. Kansas	209 S. Minneapolis 225 S. Minneapolis	3-11-29	1-13-42 6-11-40
5+0	106.54	99.90	6.64		+90.7 +40.8 +64	+88.2 +38.3 +61.5	# 1189	# 4107	212 S. Kansas 213 S. Minneapolis		11-10-28	8-20-41
6+0	105.94	100.0	5.94		+89.9 6+15.3 +40.6	+87.4 6+12.8 +38.1	12319		212 S. Kansas 208 S. Kansas		6-8-28	2-16-60
7+0	106.34	100.1	6.24		+66.2 +91.5	+63.7 +89		# 163	201 S. Minneapolis			3-13-29
0+0	105.87	98.50	7.37	0+0	1+82 W		# 1165		323 S. Hyd.		11-2-28	
1+0	105.67	98.60	7.07	1+59.4	+31.4 +57.6		# 1164		320 S. Hyd.		11-2-28	
2+0	104.47	98.70	5.77	3+10.1	+34.1 3+06.6		# 880		306 S. Hyd.		8-13-28	
3+0	105.17	98.80	6.37		+33.7 4+81.3		# 1811		1715 E. Waterman		8-31-39	
4+0	104.97	98.90	6.07	4+07.2	+30.6 4+37.5	3+87.5	# 9278757		308-304 S. Hyd.		5-27-72 8-3-28	
0+0	105.13	98.82	6.31	0+0	0+22.1 N	0+86 S	# 2650		1721 E. Waterman		9-12-40	
1+0	105.13	98.92	6.21	1+14.4	+92.6 N +72.8 N +98.6	+45.1 S +70.3 S +96.1	# 733		1730 McKnight			4-1-38
2+0	104.83	99.02	5.81		+51.6 +76.7 2+03.5	+49.1 +74.2 2+01	# 952 # 1670		1734 McKnight 1737 E. Waterman		7-5-38 6-23-39	
3+0	104.73	99.12	5.61		+27.5 +52.7 +79.1	+25 +50.2 +76.6	# 830 # 1427		1743 E. Waterman 1732 McKnight		4-3-39 5-26-39	
4+0	104.63	99.22	5.41	4+13.3	+40.3 +27.3 +53.6	3+01.8 3+24.8 3+51.1	# 934 # 734		1739 E. Waterman 1819 E. Waterman		6-24-38 3-9-38	12-11-45 3-2-37
5+0	104.63	99.32	5.36		+79.6 +41.6 4+77.8	3+77.1 +39.1 +65	# 62650 # 1644		1735 E. Waterman 1732 McKnight		8-19-77 6-15-39	3-31-37 3-28-38
6+0	104.63	99.32	5.36		+41.6 5+02.5 W	+39.1 5+00 E	# 737 # 79		1825 Waterman 1832 McKnight		7-21-30	3-11-37
7+0	104.63	99.32	5.36		+67.5 5+02.5 W	+65 5+00 E	# 377 # 143		1834 McKnight 1835 McKnight		5-20-38 7-2-35	
0+0	107.14	98.61	8.53	0+0	0+15 W		# 1708		1835 E. Waterman		7-21-50	
1+0	107.34	98.71	8.63	0+39	+40 +66.6		# 160		468 S. Hyd.		4-15-37	
0+0	106.27	98.20		0+0	+88.3		# 25315		1700-06 C. Kellogg		7-6-71 3-2-28	
1+0	108.14	98.30		1+34.5	+36		# 609		42 S. Hyd.		12-27-37	
2+0	107.84	98.40		2+45.5	+68.1		# 367		430 S. Hyd.		4-12-28	
3+0	107.54	98.50		3+94.8	+37.6 +68.6		# 1802		446 S. Hyd.		3-18-48	

Con't top of page 181-A

Line 11 plat on p. 180

Line 8 plat on p. 180

Line 9 plat on p. 180

Line 2 plat on p. 180

Line 1 plat on p. 180

# 73-Top-308 S. Hydraulic-6-18-28-Home Builder's Plbg. Co.  
 # 883-Top-1714 McKnight-5-23-39-Frederick Plbg. Co. See next pg  
 # 708-Top-1731 E. Waterman-3-15-38-Cherry Plbg. Co.  
 # 2227-Top-250-52 S. Kansas-10-30-64 (1+66)  
 # 62651-Top-1825 E. Waterman-8-22-77-C. Rutledge - (3+55.5)  
 # 37070-253 S. Minneapolis-8-25-28 (1+18.5)



D-181B

CONSTRUCTION RECORD

SERVICE RECORD

STATION	ELEVATION		Depth	MANHOLE	4-INCH "Y" BRANCHES		No. of Permit		House Number		DATE OF PERMITS	
	Ground	Grade			North West	South East	North West	South East	North West	South East	North West	South East
4+0	107.14	98.60	8.54	4+18.4	4+46.6 N +64 ✓ +89	4+44.1 S +61.5 +86.5 W	# 2492 C 32978 3412		1721 E Lewis 1725 E		7-11-40 6-16-77 9-26-60	
5+0	107.18	98.70	8.48	5+10.3 5+83.6	5+10.3 +39.8 +63.7 +95.1	5+12.8 +37.3 +63.2 +92.6 ✓	# 30643 1008 # C 20835 482 # C 20859 812		1723 E. Lewis 1728 1726 E. Kellogg 1730 E. Kellogg		2-25-49 7-23-38 9-4-90 5-2-28 9-1-70 3-21-29	
6+0	107.48	98.80	8.68	6+19.8	6+19.8 +46.6 +78 +98.1	6+17.3 +44.1 +69.5 +95.6	# C 29906 1435 # 1168 1113	# 15520 647	1801 E. Lewis 1735 S.O E. Lewis		1-11-72 4-4-38 9-5-72 9-23-38	8-21-69 6-4-29
7+0	107.48	98.90	8.58	7+23.7	7+23.7 +42.6 +67.6 +98.5	7+21.2 +40.1 +65.1 +96	# 34684 471 # 29944 557 # 21251 2343	# 15521 646	1807 E. Lewis 1811 E. Lewis 1815 E. Lewis		9-5-72 11-4-36 1-11-72 12-26-37 10-8-70 5-27-40	8-21-69 6-4-29 8-21-69 3-13-29 8-27-69 8-28-30
8+0	107.48	99.0	8.48	8+20.7	8+20.7 +45.6 +68.6 +94.6	8+18.2 +43.1 +66.1 +92.1	# C 11568 1771	# 15523 844	1821-23 E. Lewis 1820 E. Kellogg		11-18-68 12-31-29	8-21-69 10-16-35
9+0	107.18	99.1	8.08	9+19.5	9+19.5 +63.3 +10+13.7	9+17 +27.3 +55.1	# 1214 # 15525 113	# 15524 43	1827 E. Lewis 1900 E. Kellogg		7-8-69 11-23-38	8-21-69 8-10-30
10+0	107.19	99.2	7.99	10+13.7	+57.6 +81.1 +11+05.9	+55.1 +78.6 +11+03.4	# 15525 113 # 2817		1914 E. Lewis 123-225 3. Minnesota 1914 E. Kellogg		8-21-69 9-25-46 10-20-50	
11+0	107.20	99.3	7.90	11+49.4	+31.6 +60 +86.6	+29.1 +57.5 +84.1		# 870 # 15527 79	1914 E. Kellogg 1910 E. Kellogg		9-17-30 8-21-69 2-17-30	
12+0	107.50	99.4	8.10	12+11.1	12+11.1 +36.3 +63.8 +86.1	12+08.6 +33.8 +61.3 +83.6		# 1354 # 18943	1920 E. Kellogg 423-25 3. Minnesota		12-31-28 4-23-70	
13+0	108.16	99.5	8.66	13+09	+79 +14+05.1	+76.5 +14+02.6		# 16489 1912	422 3. Minnesota E. Kellogg		12-27-69 3-27-39	
14+0	108.60	99.6	9.0	14+69.4	+30.7 +56.6	+28.2 +54.1		# 11571 139 # 2664	416 418 3. Minnesota 418 3. Minnesota		11-18-68 3-10-42 11-18-68 4-26-40	
15+0	108.02	99.7	8.32	15+01 West	+26.8 +52.6 +78.6			# 1040 # C 11575 2331	404 3. Minnesota 374 3. Minnesota		11-18-68 10-31-47 5-21-40	
16+0	108.32	99.8	8.52	16+02	+29.4 +52.4 +77.8			# 11574 2507	370 S. Minnesota		11-18-68 7-17-40	
17+0	108.32	99.9	8.42	16+97.7	+55 +80.2 +17+04.7 +73.5			# C 12356 2802 # C 12355 1460	366 S. Minnesota 360 S. Minnesota		1-24-69 3-12-46 1-24-69 4-15-39	
18+0	108.22	100.0	8.22	18+98.7	+82.1 +19+07			# C 11571 1927 # C 12354 1232	354 S. Minnesota 350 S. Minnesota		2-2-70 5-5-47 12-1-38	
19+0	108.42	100.1	8.32	19+07	+33.2 +60.1 +87.1			# C 11573 2476 # 15526 1193	344 S. Minnesota 340 S. Minnesota		7-30-69 5-21-69 11-8-38	
20+0	108.72	100.2	8.52	20+13.2	+37.3 +62.8 +89.1			# C 11571 1049 # C 11574 872	336 S. Minnesota 330 3. Minnesota		11-18-68 8-16-38 1-18-68 5-18-38	
21+0	108.42	100.3	8.12	21+11.9	+37.6 +62.5 +87.6			# C 12353 2407	326 S. Minnesota		1-24-69 6-11-40	
22+0	108.02	100.4	7.62	22+13.3	+39.5 +60.0 +64.6			# 14904 1220	320 S. Minnesota		7-8-69 3-8-29	
23+0	109.22	100.5	8.72	23+07	+89.7							
+07	109.22	100.51	8.71									

# 945-120-352 S. Hydraulic - E. E. 42 - C. Davidson  
 # 946-120-362 S. Hydraulic - E. E. 42 - C. Davidson  
 # 2816-120-419-21 S. Minnesota - 10-20-50 - Harry Mann  
 # 4445-120-1928 E. Kellogg - 4-24-51 - J. N. Hanna  
 C 18942 - Seal off - C. L. Rutledge - 4-23-70 (11+97.4)  
 C 22894 - Seal off - C. L. Rutledge - 2-10-71 (12+53)  
 C 16491 - 1916 E. Kellogg - Seal off - Ark Valley Sewer Service - 10-27-69



D-182

Form 41-(54) 12-54

### CONSTRUCTION RECORD

### SERVICE RECORD

STATION	ELEVATION		Depth	MANHOLE	4-INCH "Y" BRANCHES		No. of Permit		House Number		DATE OF PERMITS	
	Ground	Grade			North West	South East	North West	South East	North West	South East	North West	South East
0+0	108.04	98.30	9.70	0+0: <sup>A.H. 1634.5 on Line 1, in Lewis.</sup>	0+33.5 W	0+31 E						
					+59.3	+56.8						
					+84.6	+82.1						
1+0	108.44	98.44	10.0		1+10	1+07.5						
					+36.9	+34.4						
				Turn West 1+63.1	+63.9 W	+61.4						
2+0	108.44	98.54	9.90		+79.5 N							
					2+03.6 N							
				Turn North 2+11.4	+4.3 W							
					+63.6	2+73.5	#1370		1721 Giltner			3-8-39
3+0	107.84	98.64	8.60		+91.4							
					3+17.1							
	+87.5	106.14	98.73	7.41	+41.6				1801 Giltner			9-4-29
					3+87.5	+67.7	#1218					
0+0	108.60	98.52	10.08	0+0: <sup>A.H. 1634.1 on Line 1, in Lewis.</sup>	0+20.5 N	0+18 S						
					+46.7	+44.2	#532		1727 Giltner			10-14-37
					0+72	+69.5	#153		1731 Giltner			2-26-30
					+96.7	+94.2	#96		1718 E. Lewis			3-22-37
1+0	108.90	98.62	10.28		1+22.7	1+20.2	#51	#929	1737 Giltner	1784 E. Lewis		3-25-32 6-20-38
					+50	+47.5						
				1+56.2	+74.3	+71.8	#354		1728 E. Lewis			7-15-37
					2+00.3	1+97.8	#13		1801 Giltner			3-31-37
2+0	108.30	98.72	9.58		+26.3	2+23.8	#2316D		1807 Giltner			9-25-39
					2+52.9	+50.4	#31					
					2+82.3	+77.7	#31					
3+0	108.50	98.82	9.68		3+50.9	+48.4	#1734		1804 Giltner			4-1-31
					+76.6	+74.1	#6186		1814 Giltner			4-2-40
					4+01.2	3+98.7	#2316D		1815 Giltner			12-20-72
4+0	108.70	98.92	9.78	Turn North 4+17.1	+75.9	4+73.9	#162		1821 Giltner			3-31-37
				Turn East 4+48.4	+85.5	5+23	#31		1825 Giltner			4-16-37
5+0	108.60	99.02	9.58		5+00.6	4+98.1	#31					3-1-35
	+88	108.50	99.05	9.45	5+28	+85.5	#2451		1825 Giltner			5-24-71
0+0	108.70	98.94	9.76	0+0: <sup>A.H. 1634.1 on Line 1, in Lewis.</sup>	0+41.8 N	0+39.3 S	#412		1825 Giltner			8-14-37
					+67.6	+65.1	#33449		329 Minneapolis			8-25-72
1+0	108.40	98.04	9.36	0+29.7	+92.7	+90.2	#2330		321 Minneapolis			5-19-72
	+10.5	108.50	99.05	9.45	1+05.5	1+03	#2305		321 Minneapolis			5-24-40
0+0	107.20	98.35	7.85	0+0	0+17.5 W	0+15 E	#11570		412 Minneapolis			11-18-68
					+42	+39.5	#1566		412 Minneapolis			5-16-39
					+67.8	+65.3	#21290		407 Minnesota			10-8-70
1+0	107.32	99.45	7.87		+83.7	+94.8	#5103		407 Minnesota			2-27-43
					1+22.5	1+20	#14631		378 Minneapolis			1-24-69
					+47.7	+45.2	#14631		301 Minnesota			10-14-29
					+73.5	+71	#16488		301 Minnesota			10-27-69
					+98.1	+95.6	#11569		301 Minnesota			2-26-40
2+0	107.42	99.55	7.87		2+23.3	2+20.8	#11569		301 Minnesota			11-18-68
					2+57.5	+46.3	#11569		301 Minnesota			6-17-29
					+75.2	+72.7	#11569		301 Minnesota			6-19-39
					+43.8	+41.3	#11569		301 Minnesota			11-18-68
3+0	107.52	99.65	7.87		3+00.7	2+98.2	#11569		301 Minnesota			12-31-37
					+26.4	3+23.9	#11569		301 Minnesota			12-29-70
					+51.2	+48.7	#11569		301 Minnesota			7-18-30
					+76.9	+74.4	#11569		301 Minnesota			11-12-71
4+0	107.82	99.75	8.07		4+02.5	4+0	#11569		301 Minnesota			4-2-37
					+27.9	+25.4	#11569		301 Minnesota			2-2-70
					+56.1	+53.6	#11569		301 Minnesota			10-18-40
					+82	+79.5	#11569		301 Minnesota			3-2-70
5+0	108.02	99.85	8.17		5+24.5	5+22	#11569		301 Minnesota			7-20-39
					+52.9	+50.4	#11569		301 Minnesota			2-19-70
					+78.2	+75.7	#11569		301 Minnesota			5-22-40
6+0	108.52	99.95	8.57		6+02.5	6+00	#11569		301 Minnesota			4-24-71
	+32.4	108.62	99.98	8.64	6+32.4	+22.5	#11569		301 Minnesota			11-18-68
					+22.5	+27	#11569		301 Minnesota			10-14-29
0+0	108.02	99.85	8.17	0+0: <sup>A.H. 1634.1 on Line 1, in Lewis.</sup>	0+13.2 N	0+10.7 S	#443		301 Minnesota			11-18-68
					+38.5	+36	#945		301 Minnesota			10-23-36
					+65.5	+63	#2451		302 Minnesota			5-24-71
					+90.7	+88.2	#668		302 Minnesota			12-31-37
1+0	107.92	99.95	7.97		1+15.2	1+12.7						
	+53	108.12	100.00	8.12	1+53	+40.8						

Line 5  
Plat on p. 180.

Line 6  
Plat on p. 180.

Line 7  
Plat on p. 180.

Line 3  
Plat on p. 180.

Line 4  
Plat on p. 180.

#190 - Top - 908 S. Minneapolis - 8-25-52 - Eugene Reynolds  
 #308 - Top - 316 S. Minneapolis - 6-18-37 - John Riadel - 5/04/70 (at 73)  
 #836 - Top - 370 S. Hydraulic - 6-2-38 - Brodie  
 #9 - Top - 1715 Giltner - Cherry Pkg. Co. (Connected North of A.H. 2+11.4) - 19-38  
 #2 - Top - 1734 E. Lewis - 8-1-38 - F.R. Hayes Pkg. Co.