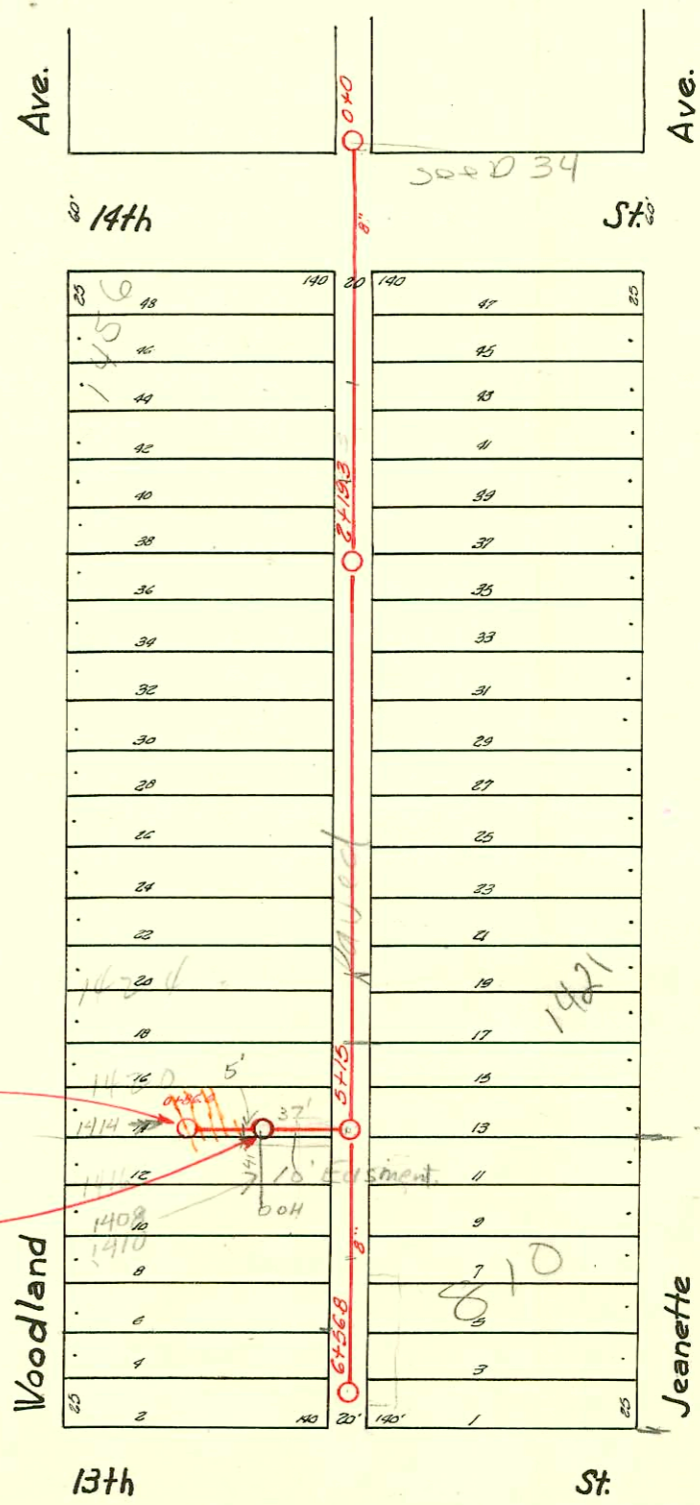


LAT. 21 - DIST. C - S.S. NO. 20  
1930



LAT. Q - DIST. 2 - S.S. NO. 20  
W. B. CARTER - 1937

Easement → Made 12-24-36 - From John Dunn & wife.  
The South 5' of the East 70' of Lot 14 on Woodland Ave., in Rich's Addition.  
Easement → Made 12-29-36 - From Martha Gates & husband.  
The North 5' of the East 70' of Lot 12 on Woodland Ave., in Rich's Addition.

M.H. CR&G Abandoned.

New M.H. 31' W. of W. Line of Alley

Reduced to 37'

D-195

CONSTRUCTION RECORD							SERVICE RECORD					
STATION	ELEVATION		Depth	MANHOLE	4-INCH "Y" BRANCHES		No. of Permit		House Number		DATE OF PERMITS	
	Ground	Grade			North West	South East	North West	South East	North West	South East	North West	South East
0+0	100.16	93.20	6.96	0+0								
1+0	100.16	93.30	6.86		0+30	0+33	#170642 247		815 Levy	50	3-14-79	10-18-35
2+0	100.56	93.40	7.16	1+88								
					2+24	2+27						
					2+40.2	2+51.2						
					2+73.2	2+76.2						
3+0	100.55	93.50	7.05		2+97.6	3+01.6	#867	4855	2030 S. Mead	2027 S Mosley	11/17/66	2-20-96 2-16-53
					3+23.3	3+26.3						
					3+48	3+51						
					3+72.5	3+75.5						
4+0	100.65	93.60	7.05	4+07	3+97.2	4+00.2						
					4+24	4+27						
					4+47.8	4+50.8						
					4+72.5	4+75.5						
5+0	101.05	93.70	7.35		4+99.5	5+02.5						
					5+27	5+30	#1436		2037 S Mosley			3-11-44
					5+51.3	5+54.3	#3118		2039 S Mosley			2-11-41
					5+78.3	5+81.3	9269	4915	2040 S. Mead	2038 S Mosley	2-25-59	4-20-53
					5+82.7	5+85.7						
6+0	100.95	93.80	7.15		5+99	6+02						
6+25.7	101.15	93.83	7.32	6+25.7	6+17.2	6+19.2						
0+0	100.41	93.73	6.68	0+0	0+19.7							
					0+43.8							
					0+68							
					0+98.9	0+95.9						
1+0	100.11	93.83	6.28		1+22.8							
1+66.8	100.21	93.90	6.31	1+66.8	1+51.0							
0+0	100.41	93.73	6.68	0+0	0+32.7							
					0+55.9							
					0+83.6		#170644 2930		805 S Levy	50	3/14/79	6-11-51
1+0	100.91	93.83	7.08		1+08.3							
					1+32.6	1+35.6	#170640 263		805 S Levy	50	3/14/79	12-30-37
1+67.5	100.91	93.90	7.01	1+67.5	1+47.4							
0+0	119.30	112.00	7.3	0+0	0+80	0+83						
1+0	119.10	112.10	7.0		1+04	1+07						
					1+28	1+31	#1532		207 W 14th 1439	1438 Woodland	5-17-40	5-8-39
					1+56	1+59	#2329	#1591	1436 Woodland	1437 Jeannette	5-17-40	5-24-39
					1+78	1+81	#1362	#3212	1430 Woodland	1437 Jeannette	3-3-39	3-24-45
2+0	119.50	112.20	7.3	2+19.3	2+02.5	2+05.5						
					2+31	2+34	#1436		1436 Woodland	1431 Jeannette	4-4-39	11-9-40
					2+55	2+58						
					2+79	2+82	#1411	#2532	1430 Woodland	1437 Jeannette	3-24-39	7-27-40
3+0	118.70	112.30	6.4		3+06	3+09						
					3+30	3+33	#20050659		1434 C/O Woodland		4-30-37	
					3+55	3+58						
					3+82	3+85	#1199	#2635	1430 Woodland	1437 Jeannette	11-25-47	9-5-40
4+0	118.80	112.40	6.4		4+06	4+09	#12		1434 Woodland	1437 Jeannette	1-18-37	4-20-41
					4+30	4+33	#3389	#9634	1434 Woodland	1437 Jeannette	1-18-37	8-30-40
					4+57	4+60	#13		1430 Woodland	1417 Jeannette	1-18-37	4-17-59
					4+82	4+85	#1001W 283					10-6-41
5+0	119.40	112.50	6.9		5+06	5+09						
				5+15	5+33	5+36						
					5+57	5+60						
					5+81	5+84						
6+0	119.40	112.60	6.8		6+06	6+09	#2116		704 W. 13th			10-9-40
					6+33	6+36	#282		814 W. 13th		6-22-45	
6+56.8	119.10	112.66	6.44	6+56.8	6+48	6+51			818 W. 13th		3-8-43	
0+0	119.32	112.52	6.8	0+0 (5H15)	0+19	0+22						
					0+43	0+46						
0+86.6	118.80	112.70	6.1	0+86.6	0+76	0+79						
							#1344		1402 Woodland		2-10-39	

96-1955-7 7-2096 2027 S Mosley - tied onto orangeburg out under house addition  
4" SDR35 1-4" C.O. 2 1/2" 1/8"

3/0 # 18896 818 & Clark 8-14-87 Kinning (6716)

- # 2196 - Tap - N.E. Corner of 13th & Woodland - 4-8-40 - Callison - Private Line
- # 2197 - Tap - Private Line - 818-820 W. 13th - 4-8-40 - Callison
- # 2198 - Private Line - 1402 Woodland - 4-8-40 - Callison
- # 2203 - Private Line - 1410 Woodland - 4-8-40 - Callison
- # 2254 - Private Line - 1412 Woodland - 4-23-40 - Callison
- # 3301 - Tap - 1451-53 Jeannette - 7-21-41 - Patton
- # 3329 - Tap - 2028 S Mead - 12-15-52 - Ray Bryant
- # 3106 - Tap - 814 1/2 W. 13th - 7-30-45 - Callison
- # 25 - Tap - 2017 S Mosley - 5-2-46 - Frederick
- # 207 - Tap - 810 Parker - 5-20-49 - Wichita Falls
- # 533 - 2001 S Mosley - Cox M. Donald - 4-16-56 (64989)
- 34251 - 2040 S Mead - Al Herring - 10-1-65 Tap (4+83.7)
- C 72092 - 201 E. Mt Vernon - 5-30-79 (1+19.8)

(No mfgs. on permit)