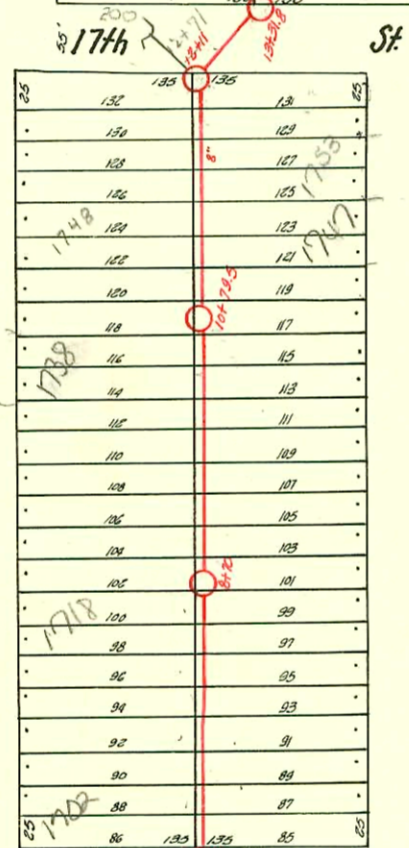
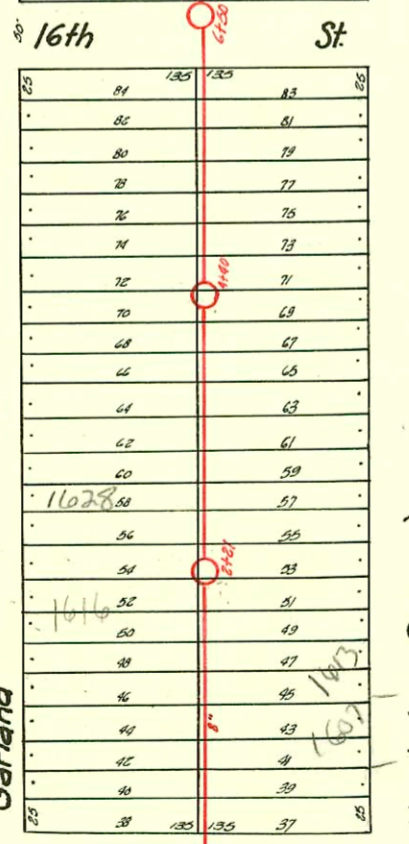


PART OF LAT. O - DIST. 2 - S.S. NO. 20  
 SIMMONS PLBG & HTG. Co.  
 1931



1=150



2003-00589 - 3/7/03 - 1834 N Garland - Overnight SW -  
 4" 40 PVC 4" WYE 78'S of MH 17+30 (16+52) old 14" s/nit  
 not correct - 2v22 at lower end by main - (Ferno,  
 1 TWIN CO, 1 H45, 122H, shallow)

2001-00953 - 4/20/01 - 1747 N Hood - clearwater exc - 4" sch 40. Tied to claytile w/ donut (on main)  
 2002-01038 - 4/10/02 - 1607 N Hood - Boardman - 4" PVC - 1H45, 1H45, 1TWIN CO (NOTE: SW that will serve detached garage,  
 in back yard w/xyed into existing 4" house swr 20' from main)

D-1998

CONSTRUCTION RECORD							SERVICE RECORD					
STATION	ELEVATION		Depth	MANHOLE	4-INCH "Y" BRANCHES		No. of Permit		House Number		DATE OF PERMITS	
	Ground	Grade			North West	South East	North West	South East	North West	South East	North West	South East
0+0	122.27	111.50	10.77	0+0	0+29	0+27			1601			
					0+55	0+53.5		# 2506	Hood		7-18-40	
					0+80.5	0+79		# 2002-01	1607 R	see next	4-10-40	
1+0	121.62	111.60	10.02		1+08.5	1+07	# 761	1608	Garland	1613	12-10-41	
					1+40	1+38.5	# 674	3566	Garland	Hood	11-28-41	6-8-41
					1+57.5	1+56						
					1+81.5	1+80	# 40079	3505	Garland	1617	7-17-43	5-19-41
2+0	121.67	111.70	9.97	2+21	2+07.5	2+06	Tap # 2389	3279	1622	1625	6-4-40	4-7-41
					2+31.5	2+30			Garland	Hood		
					2+57.5	2+56	# 3501		1628		5-19-40	
					2+83.5	2+82			Garland	1627		
3+0	121.99	111.80	10.19		3+08	3+06.5	# 3008	1632	Hood		12-30-40	
					3+33.5	3+32	# 3255	2543	Garland	1633	3-31-41	8-1-40
					3+56.5	3+55						
					3+82.5	3+81	# 2922	3979	1638	1637	10-29-42	8-8-41
4+0	123.09	111.90	11.19	4+40	4+08	4+06.5	# 3432	3978	1640	1643	5-6-41	8-8-41
					4+31.5	4+30			Garland	Hood		
					4+59.5	4+58	# 3714	3050	1648	1647	6-24-41	1-14-41
					4+85	4+83.5			Garland	Hood		
5+0	122.32	112.00	10.32		5+08.5	5+07	# 3423	3024	1652	1651	5-5-41	12-31-40
					5+34	5+32.5			Garland	Hood		
					5+55.5	5+54	# 1569	2522	1658	1647	4-21-42	8-1-40
					5+82.5	5+81	# 672		Garland	1700	12-31-37	
6+0	122.22	112.10	10.12	6+50	6+07.5	6+06	# 714	16977	1702	1707	12-2-41	9-18-42
					7+12.5	7+11		1690	Garland	Hood		
					7+38	7+36.5	# 3415	15	1712	1711	5-2-41	11-13-42
					7+62.5	7+61.0			Garland	Hood		
					7+86.5	7+85.0						
8+0	121.66	112.30	8.96	8+70	8+10.5	8+09	# 3085	2099	1718	1717	4-7-41	9-21-50
					8+34.5	8+33			Garland	Hood		
					8+60.5	8+59	# 2100	2101	1722	1723	6-16-42	6-16-42
					8+88	8+86.5			Garland	Hood		
9+0	121.36	112.40	8.96		9+12.5	9+11	# 79	2099	1728	1727	6-27-33	6-16-42
					9+38	9+36.5			Garland	Hood		
					9+63.5	9+62	# 663	2097	1732	1731	9-13-46	6-16-42
					9+82	9+80.5			Garland	Hood		
10+0	121.91	112.50	9.41		10+16	10+14.5	# 70	2096	1744	1737	6-9-33	6-16-42
					10+39.5	10+38			Garland	Hood		
					10+79.5	10+61						
11+0	122.34	112.60	9.74		10+90.5	10+87	# 1490	58	1742	1741	2-20-47	5-24-48
					11+15	11+13.5			Garland	Hood		
					11+39.5	11+38	# 1491	2000-2001	1747 R	see next pg	4-20-47	
					11+63.5	11+62			Hood		4-24-50	
					11+89	11+87.5	# 23437	1406	1753	B	6-26-39	2-6-47
12+0	122.89	112.70	10.19		12+15	12+13.5	# 36544	662	1758	1757	12-29-72	9-13-46
					12+37.5	12+36	# 1407		Garland	Hood	2-6-47	
					12+59	12+57.5	# 36545		Garland		12-29-72	
13+0	123.10	112.81	10.30	13+31.8	13+44.3	13+41.3	# 192		1806	1801	6-6-46	6-3-46
					13+69.5	13+66.5	# 229		Garland			
					13+94	13+91	# 193		1809	Hood	6-6-46	6-3-46
					14+18	14+15	# 2544		1812	Garland	10-3-50	
					14+39.5	14+38						
					14+59.5	14+58	# 194		1815	Hood		6-3-46
15+0	123.07	113.01	10.06	15+31	14+94	14+92.5	# 376		1818	Garland	5-18-42	
					15+48.5	15+46.5	# 10		1824	Garland	1-15-32	
					15+72.5	15+69.5	# 196		1825	Hood		6-3-46
					15+98	15+98	# 1875		1828 R	Garland	7-15-42	5-18-42
16+0	122.87	113.11	9.76		16+23	16+20	# 2003	1100589	1834 R	Hood	3-12-43	5-18-42
					16+47.5	16+44.5	# 1100589		Garland	see next pg	1-15-32	
					16+70.5	16+67.5	# 1874	1880	1838	1835	5-18-42	5-18-42
					16+94.5	16+91.5			Garland	Hood		
17+0	122.68	113.21	9.47	17+30	17+20	17+17	# 7	1879	1848	1841	1-13-32	5-18-42
					17+45	17+42			Garland	Hood		
					17+70.5	17+67.5	# 1873	1878	1848	1845	5-18-42	5-18-42
					17+92.5	17+92.5			Garland	Hood		
					18+20	18+17	# 6091	14	1854 R	1851	7-2-32	5-18-42
					18+45	18+43	# 14	1877	Garland	Hood	1-15-32	
					18+69.5	18+66.5	# 15		1858	Garland	1-15-32	
18+0	122.83	113.31	9.52		18+91.5	18+88.5	# 9		1855	Hood	1-15-32	
					19+31.5	19+14.5						

# 45-Top-1602 Garland-3-10-36-Vandell  
 # 306-Top-1701 Hood-6-18-37-La Fay  
 # 195-Top-1819 Hood-6-3-46-Mich. Ig. Pkby. Co.  
 # 810-Top-1752 Garland-10-18-46-Collison  
 # 811-Top-1748 Garland-10-18-46-Collison  
 # 35571-Top-1724-16-1712-5-24-76-Don Coleman (12+ 812)

\* # 1828-1848 Garland 5-18-42