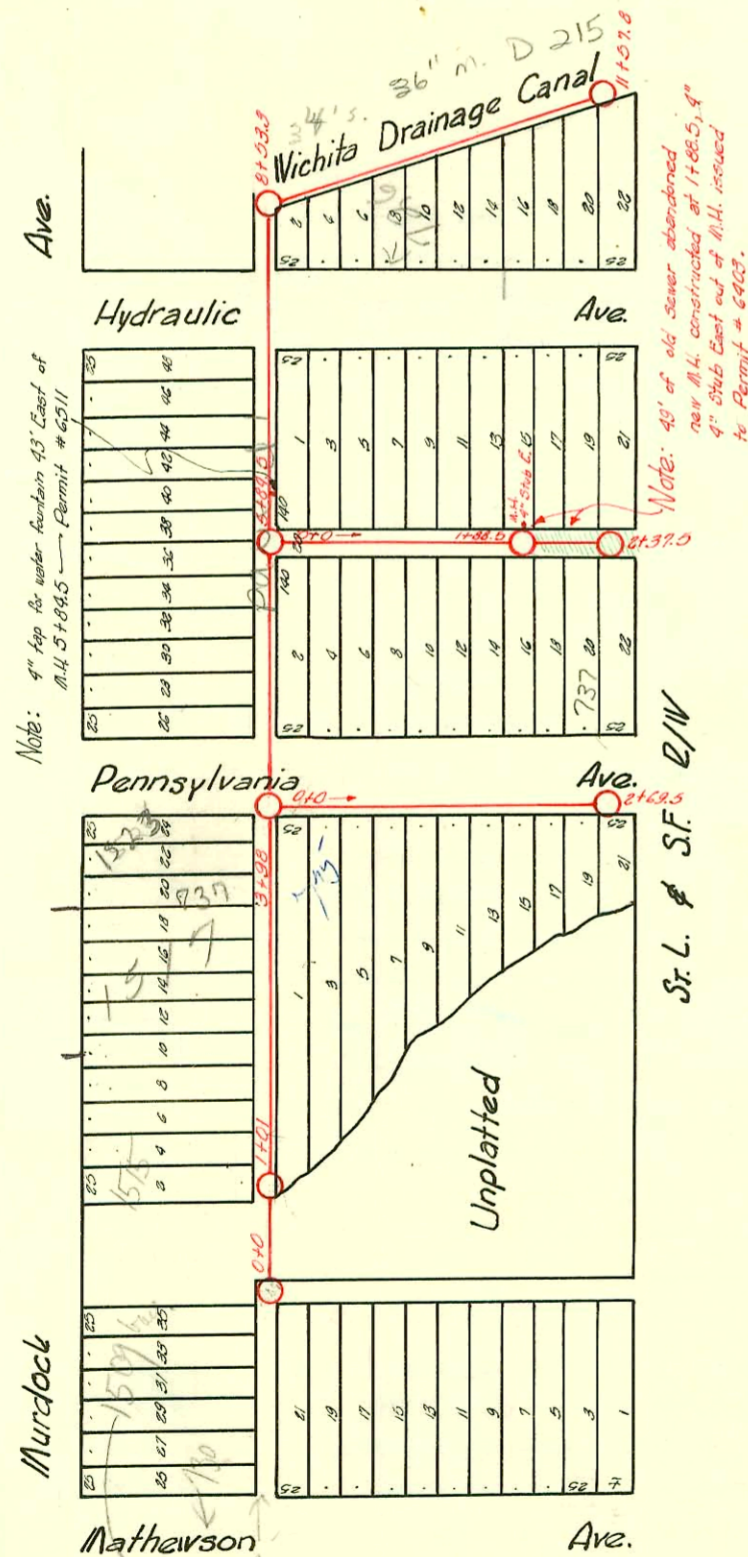
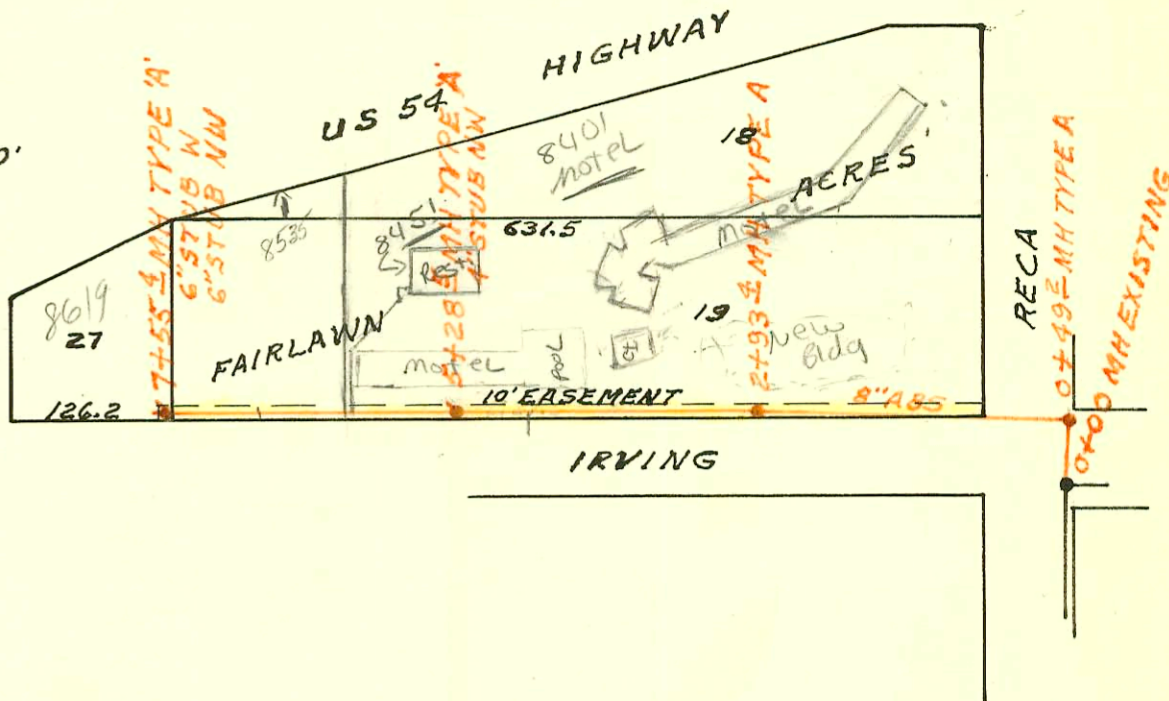


LATERAL 116 SOUTHWEST INTERCEPTOR
 BUILT BY: UTILITY CONTR. INC.
 PROJ. NO DBKL 577076
 BOOKED 5-5-79 FROM LES 10

SCALE 1"=150'



Note: 4" tap for water fountain 45' East of M4 5789.5 - Permit # 6311

Note: 40' of old sewer abandoned near M4, constructed at 1788.5, 4" 6" Sub East end of M4, increased to Permit # 6463.

Sr. L. & S.F. E/W

LAT. 13-S.S. NO. 20
 1931 - CHAPIN

62
 5/15/79

CONSTRUCTION RECORD						SERVICE RECORD						
STATION	ELEVATION		Depth	MANHOLE	4-INCH "Y" BRANCHES		No. of Permit		House Number		DATE OF PERMITS	
	Ground	Grade			North West	South East	North West	South East	North West	South East	North West	South East
0+0				0+0		0+34						
1+0				1+01	0+60	1+358						
2+0				2+00	1+60.5	1+90.8	#1715		1517 E. Murdock		10-8-64	9-19-49
3+0				3+00	2+36.5 2+72.0 2+76.5	3+22.7	#110 #1230 C63845		1517 E. Murdock Murdock		10-8-64	6-7-50
4+0				3+98.0	3+52.7							
5+0					4+4.5							
6+0				5+84.5	4+62.5							
7+0					4+97.0							
8+0				5+84.5	5+27.5							
9+0					5+68.5							
10+0					6+04	6+07						
11+0					6+32							
11+57.8				8+53.3	6+56.8		#20720 23		1619 S/O E. Murdock		5/21/88	2-8-32
					6+81							
					7+04.7							
					7+32							
					West							
					8+77.3		C47444		726 N. Hydraulic		11/20/74	
					9+01.3		5317		726 N. Hydraulic		3-8-82	
					9+25.3							
					9+43.0							
					9+68.5							
					9+91							
					10+20		5317 #6768 4472		726 N. Hydraulic 726 N. Hydraulic		2-8-82 8-3-78	4-26-51
					10+57							
					10+80.7							
					11+08							
				11+57.8	11+32		#1798		702 N. Hid.		9-26-49	
0+0				0+0	0+19	0+16						
					0+46.5	0+93.5						
					0+73.5	0+120.5						
1+0					1+00.5	0+197.5						
					1+38.5	1+35.5						
					1+65.5	1+62.5						
2+0				1+88.5	2+30	2+27						
0+0				0+0	0+49							
					0+74.4							
					1+01.5							
					1+25.5							
					1+53.6							
					1+77.6							
2+0					1+94.5							
					2+28							
					2+52							
2+69.5				2+69.5	2+64.5							

LATERAL 116 SOUTHWEST INTERCEPTOR SEWER

0+00	138.2	133.47	4.7	0+00	EXISTING							
	138.6	133.67	4.9	0+49.2								
1+00	138.0	133.77	4.2									
2+00	139.5	133.97	5.5									
	140.0	134.16	5.8	2+93.4								
3+00	140.0	134.17	5.8									
4+00	141.2	134.37	6.8									
5+00	141.7	134.57	7.1									
	141.7	134.63	7.1	5+28.5	4" STUB NW							
6+00	141.1	134.77	6.3									
7+00	141.0	134.97	6.0									
	141.1	135.08	6.0	7+55.4	6" STUB W							
C 23812-724												

#1239 Tap-737 N. Hydraulic-1-18-56-Lap Hill Pkg.
 #6357 Tap-1613 E. Murdock-9-3-53-Lap Hill Pkg.
 #7634 Tap-730 Pennsylvania-7-1-44-Harley Wiggs
 #1718 Tap-730 N. Hydraulic-8-4-49-Fredrick Pkg.
 #1110 Tap-1527 1/2 E. Murdock-8-9-52-Jim Hanna
 #1278 Tap-702 N. Hydraulic-7-23-52-Simmons Pkg.
 #6311-733 N. Hydraulic-9-20-55-Landall Pkg.
 #6403-707-35 N. Hydraulic-9-10-55-Landall Pkg.
 #1060 Tap-523 E. Murdock-6-2-58-Cedeno Pkg.
 #12111 Tap-1515 E. Murdock-10-1-64-Lap Hill Pkg.
 #22176-1515 E. Murdock-Prop Brn-11-12-64-Tap (1+06.6)
 96-655-7 4/29/46 737 N. Pennsylvania McCullough - 5/6 68 ft West of Mt 1