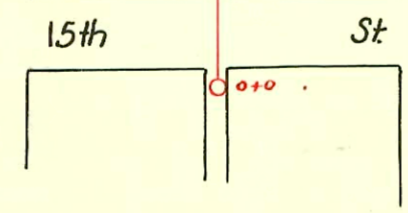
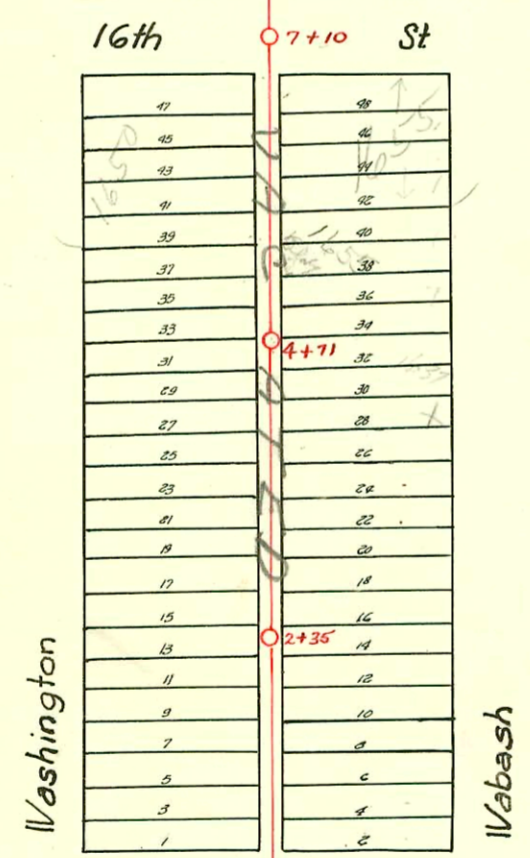
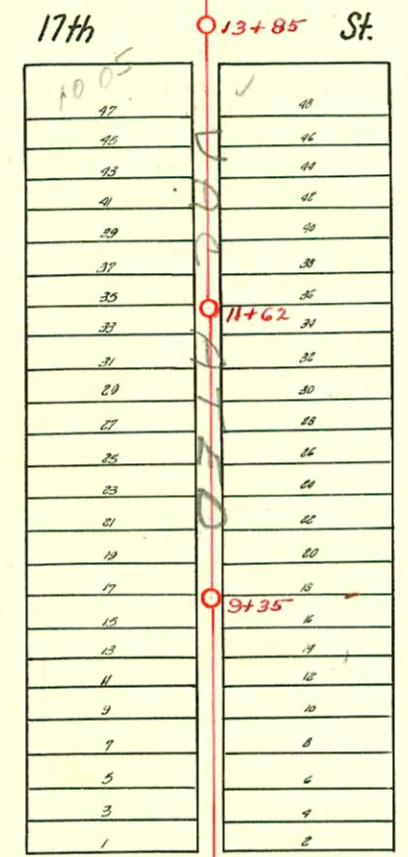
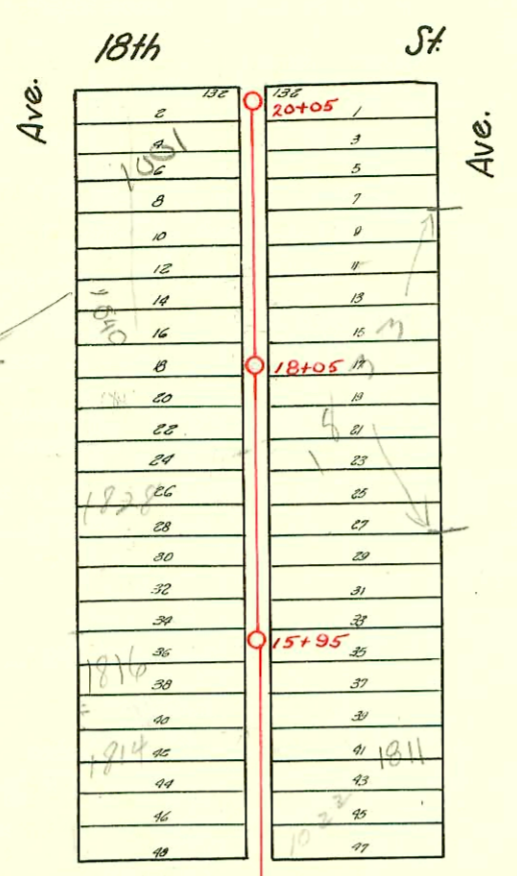


1840 N Wash. has been assigned the odd of 100 E 18th 8/7/2000
JZ



LAT. 14-S.S. 20
W.B. CARTER
1935

CONSTRUCTION RECORD							SERVICE RECORD					
STATION	ELEVATION		Depth	MANHOLE	4-INCH "Y" BRANCHES		No. of Permit		House Number		DATE OF PERMITS	
	Ground	Grade			North West	South East	North West	South East	North West	South East	North West	South East
0+0	118.30	108.10	10.20	0+0	0+98	1+01						
1+0	118.00	108.20	9.80		1+25	1+28 Tap	#58204		1601 N. Wash		10-17-76	
					1+52	1+55	3930		1603 N. Wash		3-18-55	
					1+79	1+82	#68418		1607 N. Wash		9-18-78	
							3881				3-18-55	
2+00	118.10	108.30	9.80		2+04	2+07						
				2+35	2+29	2+32						
					2+48	2+51						
					2+74	2+77						
3+0	119.90	108.40	11.50		2+98	3+01	#035454		1615 N. Wash		10-18-72	
					3+24	3+27	1689		1613 N. Wash		5-19-77	
					3+48	3+51	#61198		1612 N. Wash		11-10-39	
					3+73	3+76	1967		1612 N. Wash		7-13-76	
							#56797				6-17-39	
							1653					
4+0	119.20	108.50	10.70		4+0	4+03			1618 N. Wash		7-13-76	
					4+25	4+28	#56674		1637 N. Wash		6-13-47	
					4+49	4+52	216		1633 N. Wash		8-2-68	
				4+71	4+77	4+80	#99111					
							2534					
5+0	119.30	108.60	10.70		5+0	5+03			1644 N. Wash		3-25-46	
					5+26	5+29	#2724		1655 N. Wash		2-1-77	
					5+50	5+53	259703		1647 N. Wash		7-13-76	
					5+72	5+75	#4853				8-15-53	
6+0	119.50	108.70	10.80		6+01	6+04						
					6+25	6+28						
					6+48	6+51			1655 Wash		4-5-62	
					6+77	6+80						
7+0	119.30	108.80	10.50	7+10	7+52	7+55	#3803		1002 E. 16th		1-19-53	
					7+76	7+79						
8+0	119.20	108.90	10.30		8+01	8+04						
					8+28	8+31						
					8+52	8+55			1205 Wash		9-14-79	
					8+77	8+80	#16418		1713 N. Wash		11-20-62	
							209		1713 1/2 N. Wash		6-11-36	
9+0	119.50	109.00	10.50		9+0	9+03	#16419		1719 N. Wash		11-20-62	
				9+35	9+25	9+28	3065		1719 N. Wash		1-26-53	
					9+53	9+56	#3966					
					9+77	9+80						
10+0	119.60	109.10	10.50		10+01	10+04						
					10+25	10+28						
					10+53	10+56						
					10+77	10+80						
11+0	119.40	109.20	10.20		11+02	11+05	#56654		1739 N. Wash		7-13-76	
					11+29	11+32	1582		1736 N. Wash		5-3-44	
					11+52	11+55	#716		1741 N. Wash		1-29-68	
							3754		1741 N. Wash		3-9-54	
							3913		1743 Wash		4-8-74	
				11+62	11+77	11+80					6-11-66	
12+0	119.00	109.30	9.70		12+00	12+03						
					12+29	12+32						
					12+50	12+53	#21291		1753-55 N. Wash		10-18-76	
					12+74	12+77	4852				8-12-66	
13+0	119.40	109.40	10.00		13+01	13+04						
13+85		109.25			13+26	13+29	#43401		1759 N. Wash		2-8-74	
14+0	118.20	110.50	7.70	13+85	13+49	13+52	#3909		1761 N. Wash		11-21-69	
					14+49	14+52	2197		1761 N. Wash		1-28-53	
					14+72	14+75						
15+0	118.80	110.60	8.20		14+98	15+01	#23672		1800-1022-24 E. 17th		1-8-73	
					15+26	15+29	2031				5-1-45	
					15+50	15+53						
					15+68	15+71	#36675		1815 N. Wash		1-8-73	
							2084		1816 N. Wash		6-6-45	
							13968				3-14-61	
16+0	119.10	110.70	8.30	15+95	15+88	15+91						
					16+19	16+22	#44550		1819 N. Wash		4-19-74	
					16+44	16+47	12441		1820 N. Wash		4-1-60	
					16+68	16+71	#66676				6-5-78	
17+0	119.50	110.80	8.70		16+94	16+97						
					17+22	17+25						
					17+47	17+50						
					17+71	17+74						
18+0	119.00	110.90	8.10		17+97	18+0						
				18+05	18+28	18+31	#17075		1840 N. Wash		10-02-86	
					18+46	18+49	2139		1840 N. Wash		4-8-55	
					18+73	18+76	26186		1840 N. Wash		6-13-77	
							#36678		1845-1847 N. Wash		1-8-78	
					18+97	19+0	1473				6-29-50	
19+0	118.40	111.00	7.40		19+21	19+24						
					19+48	19+51						
20+0	118.40	111.10	7.30	20+05	19+71	19+74						
					19+97	20+0			1855 Wash		12-12-60	

#1605 - Tap at 14+66-108 E. 17th - 7-13-50 - Cowan Pkg.
 #2643 - Tap - 1621 N. Wash - 9-24-52 - Joe McDonald - Seal off - C32725 - 6/7/72 - C. J. Rutledge (3+49)
 #3891 - Tap - 1611 N. Wash - 1-23-53 - Brodie Pkg.
 #3930 - Tap - 1601 N. Wash - 3-18-55 - Arice Lay
 #4044 - Tap - 1890 N. Wash - 4-5-55
 3551 Tap - 1721 Wash - 1-9-57 - Seal off (Seal off 16420 11-30-62)
 Tap 11755 - 1743 Wash - 10-27-59 - Seal off C36676 - Des France 1-8-73
 C 19064 - 1650 N. Wash - Seal off C Severn 5-1-70 - top (6+64)
 C 19643 - 1005 E. 17th - (Addn.) at Henning 6-10-70 top (12+65)
 C 58937 - 1605 Wash - 11-18-76 (3+60)