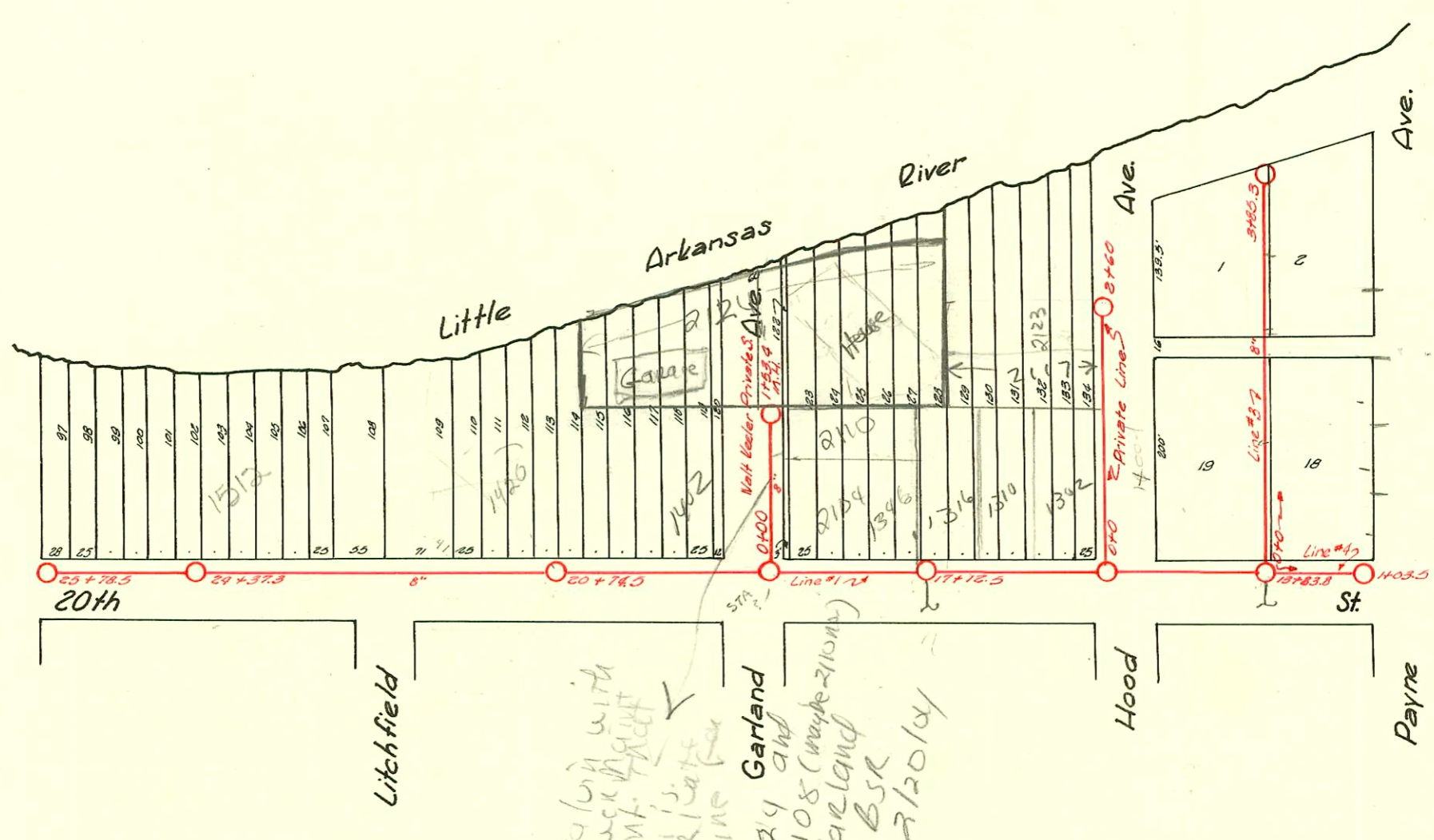


1=150



2124 and
 2108 (wyde 2108)
 Garland
 BSR
 2120 1/4
 Private
 Line
 with
 Sewer
 Conf.

LAT. 2 - DIST. 2 - S.S. # 20
 W.B. CARTER
 1938

2002-02657 9/26/02 2117N Hood McClung - City Wye repair 4" Predco 162.5' N of HHOOCO (private main)
 ITWIN 00, 1045

D-207

CONSTRUCTION RECORD							SERVICE RECORD					
STATION	ELEVATION		Depth	MANHOLE	4-INCH "Y" BRANCHES		No. of Permit		House Number		DATE OF PERMITS	
	Ground	Grade			North West	South East	North West	South East	North West	South East	North West	South East
13+0				13+83.8								
14+0	123.10	114.30	8.80		13+97.8							
					14+20.7		#2045		2102 Hood		12-15-39	
					14+44.7							
					14+69.3							
					14+92.0							
15+0	123.00	114.40	8.60		15+63.0		#3109		1302 W. 20th		1-20-50	
					15+86.8							
16+0	122.90	114.50	8.40		16+14.0				1310 W. 20th		5-18-50	
					16+37.5		#1096					
					16+62.0							
					16+88.8		#20669		1316 - R W. 20th		5-12-88	
					17+12.5		1097		1346 W. 20th		5-18-50	
17+0	123.10	114.60	8.50	17+12.5	17+12.5		254744				4-12-76	
					17+44.0				1328 W. 20th		8-7-39	
					17+68.0		#1755					
					17+89.0							
18+0	123.30	114.70	8.60		18+18.5							
					18+37.0							
19+0	123.60	114.80	8.80		19+21.5		#890		1402 W. 20th		7-18-49	
					19+34.0							
					19+57.7							
					19+81.5							
20+0	123.40	114.90	8.50		20+09.5		#3566		1406-8 W. 20th		1-4-51	
					20+33.0							
					20+58.5		#1702		1416 W. 20th		7-11-39	
					20+84.0							
21+0	123.60	115.00	8.60	20+74.5	21+09.5							
					21+34.0							
					21+58.5		9058		1420 W. 20th		8-24-83	
					21+82.5		#1707		1428 W. 20th		7-13-39	
22+0	123.40	115.10	8.30		22+09.0							
					22+84.0							
23+0	123.20	115.20	8.00		23+08.3		#3175		1506 W. 20th		1-14-55	
					23+35.5							
					23+60							
					23+84.0							
24+0	123.30	115.30	8.00		24+08.0							
					24+33.0							
					24+57.0		#1766		1578 W. 20th		8-14-39	
					24+83.5		#2532		1512 W. 20th		9-30-50	
25+0	123.50	115.40	8.10		25+09.0		#159		1520 W. 20th		4-3-52	
					25+32.5							
					25+57.0							
Line #3												
0+0	122.70	113.91	8.79	0+0	0+12.0	0+09.0						
					0+37.0	0+34.0						
					0+61.0	0+58.0						
					0+85.0	0+82.0	#1457	#3141	2108-10 Hood	2107 Payne	6-28-50	11-17-50
1+0	123.25	114.01	9.24		1+11.5	1+08.5						
					1+36.0	1+33.0			2116 Hood		10-9-01	3-14-51
					1+60.0	1+57.0						
					1+84.5	1+81.5						
2+0	123.70	114.11	8.59		2+11.0	2+08.0	#1876		2122 Hood		8-7-50	
					2+36.0	2+33.0						
					2+61.0	2+58.0	#1877		2126 Hood		8-7-50	
					2+86.5	2+83.5						
3+0	124.21	114.21	10.00		3+07.5	3+04.5		#1104		2127 Payne		8-2-49
					3+32.5	3+29.5	#5303		2130 Hood		7-20-51	
					3+60.0	3+57.0		#1105		2131 Payne		8-2-49
					3+85.3	3+81.0	#139		2141 Payne		8-20-52	
Line #4												
0+0				0+0	0+14.2							
					0+37.4							
					0+61.2							
					0+79.8							
1+0				1+03.5								
Private Line on Hood Ave.												
0+00	123.0	115.30	7.7	0+0	Y West							
1+00	123.3	115.40	7.9		4" 40" pipe		#2002		2117 R Hood	See next pg	9-26-02	
2+00	123.8	115.50	8.3		1462.5		1846		2123 R Hood		8-3-50	
					4" sch 40		#77		2124 R Hood		12-19-91	
					2+09.0		#1847		2131 R Hood		8-3-50	
					2+55.6		#1848				11-10-51	
2+60	124.2	115.58	8.62	2+60							8-3-50	
Walt Keeler-Private Sanitary Sewer.												
0+0	123.8	115.05 in	8.7	0+0	New M.H.	"Y" East						
1+0	123.4	115.45	8.0				#3790		2108 Garland		1-15-53	
	123.4	115.66	7.7	1+53.4								

#1857 Tap- 2117 Payne-3-25-48-Coleman
 #1858 Tap- 2123 Payne-3-25-48-Coleman
 #781 Tap- 2101 Payne-3-28-48-Coleman
 #5620- 1422 W. 20th- Creekmore-8-16-55
 #3695- 1622 W. 20th- Creekmore-8-16-55
 #898 Tap- 1502 W. 20th- 5-8-50- Shigers
 #4620- Stub in M.H. 1453.4- 2124 Garland-3-30-53-Diggs
 #216715- 1432 W. 20th St. No. (Ryman) 327 23.5