

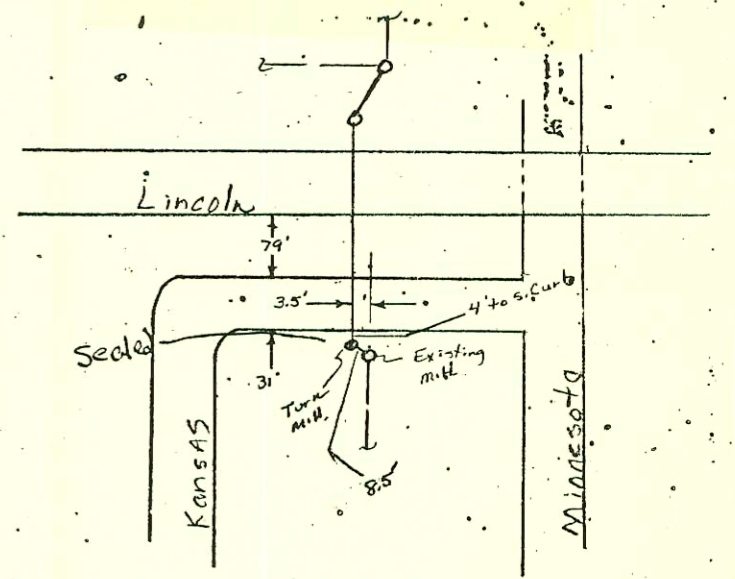
SCALE 1"=60'

CHANGES BY STATE HWY DEPT  
BOOKED 8-20-77 FROM AS  
BUILT PLAN

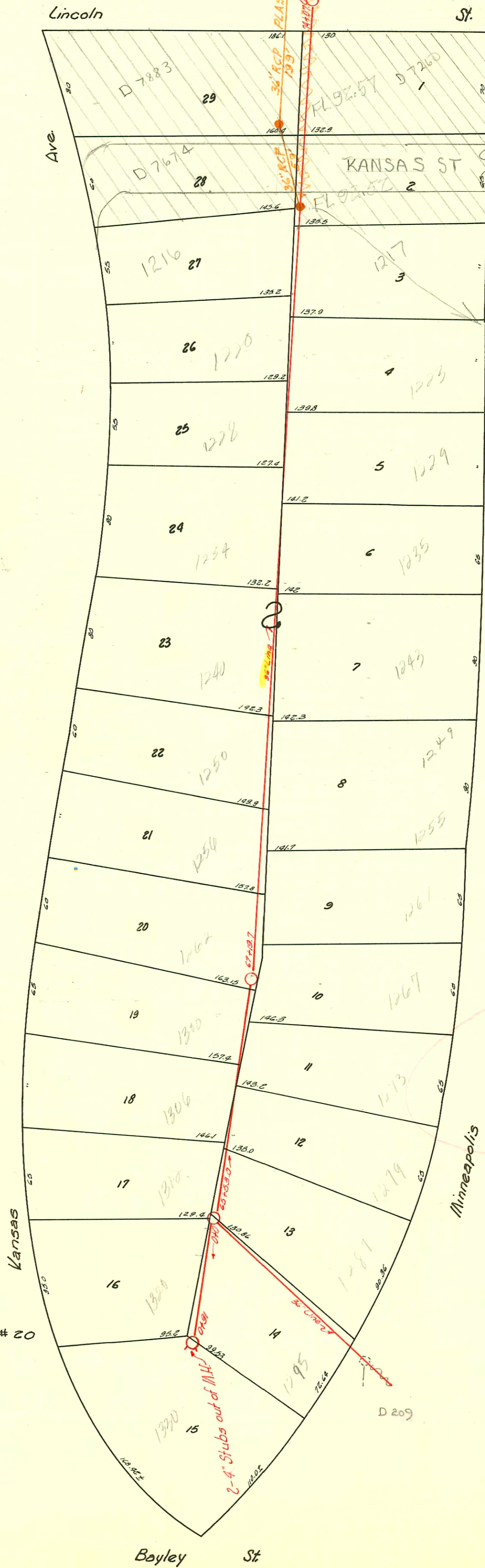
Ave.

2-13-79

Trap Area  
Traps are required



As determined in field 2-15-79



PART LAT. 16 - S.S. # 20

36" main

TRAP  
AREA

2-4" stubs out of M.H.

D 209

D-210

CONSTRUCTION RECORD						SERVICE RECORD						
STATION	ELEVATION		Depth	MANHOLE	4-INCH "Y" BRANCHES		No. of Permit		House Number		DATE OF PERMITS	
	Ground	Grade			North West	South East	North West	South East	North West	South East	North West	South East
		91.60		65+53.0		4" ABS 90° (see)	# 352161	# 352161	1312 S.	1337 S.	10-3-39	12-19-80
					65+66.9	65+62.0	1871	3150	Kansas	Minneapolis		2-27-41
					65+91.0	65+85.5						
66+0	104.03	91.64	12.39		66+12.5	66+10.0	# 2088	# 2088	1306 S.	1279 S.	12-19-80	12-19-80
					66+42.0	66+31.0	# 2088	1377	Kansas	Minneapolis	12-11-39	3-9-39
					66+67.5	66+51.0	# 3580	# 2159	1300 S.	1273 S.	6-9-41	12-19-80
						66+76.4		# 2158		1267 S.		12-19-80
						66+98.0		1834		Minneapolis		
67+0	104.63	91.72	12.91		67+01.0							
					67+16.6							
		91.73		67+19.7								
						67+30.0		# 67	# 53	1262 S.	1261 S.	12-19-80
					67+67.0	67+51.0	# 2410		Kansas	Minneapolis	9-12-41	9-9-41
					67+84.0	67+87.0			1256 S.		6-12-40	
68+0	104.13	91.80	12.33		68+24.0	68+16.0	2006- # 01192	# 2156	1255 S.		5-11-80	12-19-80
					68+47.5		1819	1493	1250 S.		11-29-39	4-15-42
					68+85.5	68+83.0		# 2155	Kansas	1249 S.		12-19-80
69+0	101.73	91.88	9.85		69+12.0	69+07.0	# 1007	# 2154	1240 S.		1-20-80	
					69+31.0	69+25.0		1492	Kansas	1243 S.	2-9-42	12-19-80
						69+97.0		# 2153		1235 S.		1-12-42
								860		Minneapolis		
70+0	101.73	91.96	9.77		70+06.0			# 2154				
						70+40.0		# 2154		1229 S.		12-19-80
					70+65.0	70+61.0	# 2325	1402	1228 S.	Minneapolis	5-15-40	3-22-39
					70+85.0				Kansas			
71+0	100.93	92.04	8.89			71+03.0		# 2151		1223 S.		12-19-80
						71+27.0		# 329		Minneapolis		10-13-41
						71+27.0		# 2154				
						71+46.0		1386		1220 S.		3-14-39
						71+70.0				Kansas		
						71+93.0						
72+0	100.97	92.12	8.85		72+06.0		# 1409	# 2150	1216 S.		4-12-39	
					72+45.0	72+35.0		3388	Kansas	1217 S.		12-19-80
					72+65.0	72+56.0	# 2376	# 3376	1210 S.	1211 S.	11-12-71	4-28-11
							3100	1561	Kansas	Minneapolis	2-6-41	5-15-39
73+0	101.07	92.20	8.87		73+03.0	73+01.0		# 2193		1203 S.		11-30-70
					73+22.0	73+19.0	# 3397	942	1202 S.	Minneapolis		2-2-42
					73+70.0	73+67.0		1357	Kansas		6-24-39	
74+0	102.36	92.28	10.08									
		92.28		74+07								
Part Lot 16, S.S. # 60												
0+0	103.70	92.57	9.13	0+0 (65+53)	0+16.0	0+19.0	# 2197	# 2197	1320 S.	1298 S.	11-29-39	12-19-80
					0+48.0	0+51.0	1829	1571	Kansas	Minneapolis		5-17-39
					0+91.0		# 2197		1330 S.		12-2-39	
					Two 4" stubs out of M.H.		1238		Kansas			
# 2160	12-19-80	R.D. Campbell		1279 S. Minneapolis	add 4" ABS TRAP at Bldg - BSMT DRAIN							
# 2159	12-19-80	R.D. Campbell		1273 S. Minneapolis	- added 4" ABS TRAP and cleanout at Bldg							
# 2158	12-17-80	R.D. Campbell		1267 S. Minneapolis	- added 4" ABS TRAP & cleanout at Bldg							
# 2162	12-19-80	R.D. Campbell		1295 S. Minneapolis	- added ABS TRAP and cleanout 20 FT W. of Bldg, w/c in Line for 2-Kick Out							
# 2161	12-19-80	R.D. Campbell		1287 S. Minneapolis	- added 4" ABS TRAP and cleanout 15 FT W. of Bldg							
98-60177	4-16-98			1320 S. Kansas								

Note: 3/16" must be subtracted from recorded depth for depth of "Y"s

# 2005 - Tap - 1234 S. Kansas - 12-4-39 - Shellenberger  
 # 1535 - Tap - 1250 S. Kansas - 6-6-52 - Co. Fe.  
 02167

98-60177 1320 S. KANSAS 4/16/98 4" SCH 40 PVC  
 1-4" WNE FOR 2nd KICK OUT