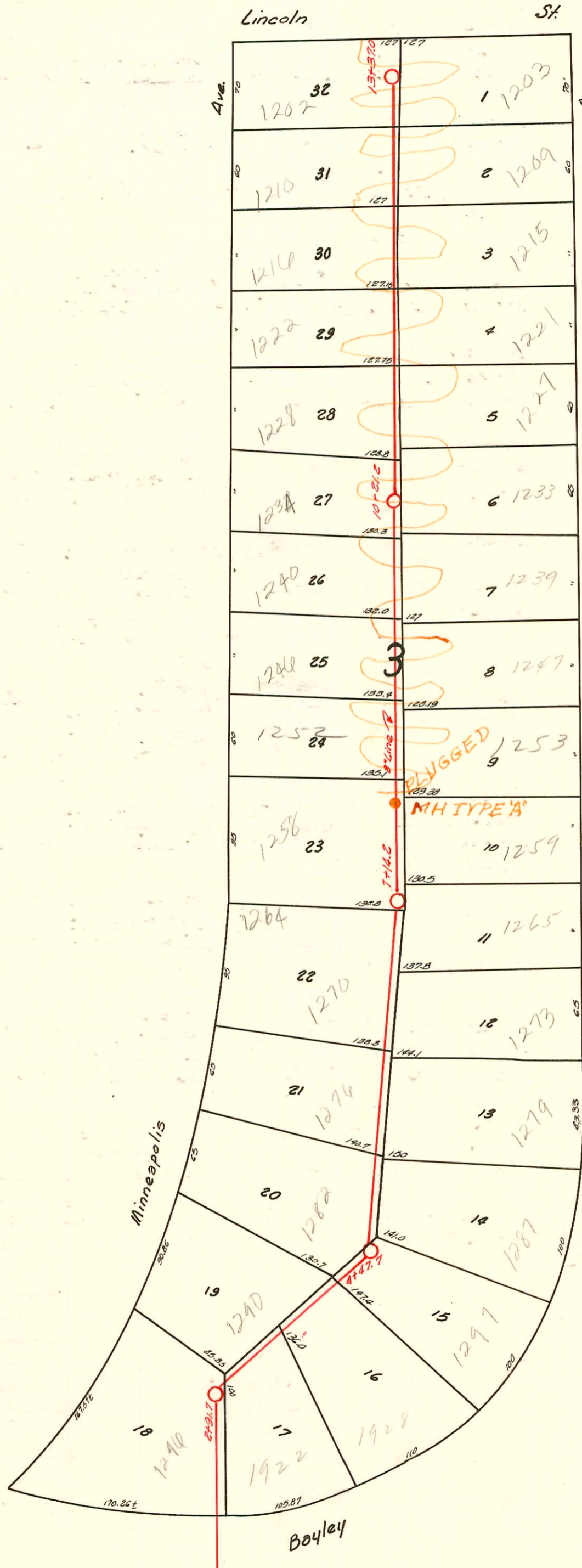


RECORD RECORD

RESTRICTION RECORD



LAT. 16-S.S.#20 (0+0-3+60)  
 LAT. 17-S.S.#20 (3+60-13+37)  
 BOTH W.B. CARTER - 1938

CHANGES BY STATE HWY DEPT  
 BOOKED 8-20-77 FROM AS BUILT  
 PLANS

TRAP AREA

Lincoln St

St

Ave.

Ave.

Minneapolis

Minnesota

Boyley

PLUGGED  
 MH TYPE 'A'

127 127

127

127.6

127.75

128.0

128.3

128.0

128.1

128.31

130.5

132.8

138.3

144.1

141.0

137.4

132.0

110

170.26±

105.67

100

100

100

100

32

31

30

29

28

27

26

25

24

23

22

21

20

19

18

17

16

15

14

13

12

11

10

9

8

7

6

5

4

3

2

1

3

3

3

3

3

3

3

3

3

3

3

3

3

3

3

3

3

3

3

3

3

3

3

3

3

3

3

3

3

3

3

3

3

3

3

3

3

3

3

3

3

3

3

3

3

3

3

3

3

3

3

3

3

3

3

3

3

3

3

3

3

3

3

3

3

3

3

3

3

3

3

3

3

3

3

3

3

3

3

3

3

3

3

3

3

3

3

3

3

3

3

3

3

3

3

3

3

3

3

3

3

3

3

3

3

3

3

3

3

3

3

3

3

3

3

3

3

3

3

3

3

3

3

3

3

3

3

3

3

3

3

3

3

3

3

3

3

3

3

3

3

3

3

3

3

3

3

3

3

3

3

3

3

3

3

3

3

3

3

3

3

3

3

3

3

3

3

3

3

3

3

3

3

3

3

3

3

3

3

3

3

3

3

3

3

3

3

3

3

3

3

3

3

3

3

3

3

3

3

3

3

3

3

3

3

3

3

3

3

3

3

3

3

3

D-211

CONSTRUCTION RECORD						SERVICE RECORD						
STATION	ELEVATION		Depth	MANHOLE	4-INCH "Y" BRANCHES		No. of Permit		House Number		DATE OF PERMITS	
	Ground	Grade			North West	South East	North West	South East	North West	South East	North West	South East
0+0	103.30	94.52	8.98	0+0	See page 209 for Y's							
1+0	103.80	94.62	9.18		South of Bayley							
2+0	102.70	94.72	7.98		2+06.0	2+03.0						
					2+41.5	2+38.5						
					2+71.0	2+68.0	#3069	#1446	1296 S. Minneap.	1922 S. Bayley	1-23-41	4-11-39
		94.81		2+91.7								
3+0	102.00	94.81	7.19		3+00.0							
					3+25.3		#1913		1290 S. Minneap.		10-18-39	
						3+61.5						
						3+70.3	#2013		1238 Bayley		12-6-39	
4+0	101.30	94.92	6.38		3+93.0							
						4+39.5						
		94.97		4+47.7								
					4+64.7	4+61.7	#1985	#2698	1282 S. Minneap.	1297 S. Minnesota	11-21-39	9-26-40
					2Y Estimated 4+96.0		#2909		1287 S. Minnesota			4-5-46
5+0	101.10	95.02	6.08		5+21.5	5+18.5						
					5+47.0	5+44.0	#656	#2908	1276 S. Minnes.	1279 S. Minnesota		4-5-46
					5+70.8	5+67.8					9-12-46	
6+0	100.80	95.12	5.68		6+04.0	6+01.0						
					6+29.0	6+26.0	#655	#3296, #1012, #2052, #3073	1270 S. Minneap.	1273 S. Minnes.	9-12-46	6-16-72, 2-9-46, 2-12-70, 6-3-41
					6+68.0	6+65.0						
7+0	100.80	95.23	5.57		7+14.2	7+25.3						
						7+41.0	#1783, #1775		1259 S. Minnes.			5-2-70, 8-15-39
						7+62.5	#172		1258 S. Minneap.		5-28-46	
						7+82.5						
						7+99.0	#1767, #3937		1257 S. Minnes.			1-16-70, 5-13-41
8+0	100.00	95.32	4.68		8+14.0		#3064, #2577		1252 S. Minneap.			2-25-72, 8-15-40, 11-21-69
					8+34.0	8+31.0	#1701, #302		1247 S. Minnes.			12-19-41
					8+59.0	8+56.0	#2029		1246 S. Minneap.			2-21-74, 12-11-39
					8+84.0	8+81.0						
9+0	100.40	95.42	4.98		9+11.0	9+08.0	#1814, #3011		1239 S. Minnes.			2-26-70, 12-31-40
					9+35.5	9+32.5	#1807, #2625		1240 S. Minneap.			8-31-40
					9+56.0	9+53.0						
					9+80.0	9+77.0						
10+0	100.80	95.52	5.28		10+05.0	10+02.0	#1922, #2630		1234 S. Minneap.	1233 S. Minnes.	5-11-70	11-21-69, 9-23-40, 2-5-41
		95.54		10+21.2	10+47.5	10+44.5	#2236, #1813		1228 S. Minneap.	1227 S. Minnes.	2-26-70	2-2-70, 2-24-40
					10+81.0	10+78.0						
						10+90.0						
11+0	102.00	95.62	6.78		11+14.5	11+11.5	#1921, #2969		1222 S. Minneap.	1221 S. Minnes.	5-11-70	12-21-40, 2-26-70
					11+47.5	11+44.5	#1948		1216 S. Minnes.	1217 S. Minnes.	5-11-70	11-6-39, 2-11-70, 6-25-40
					11+81.0	11+78.0	#2370, #2446		1215 S. Minneap.			
12+0	103.40	95.72	7.68		12+14.0	12+11.0	#1922, #3349		1211 S. Minnes.			5-11-70, 4-19-41
					12+48.0	12+45.0	#2053, #3149		1210 S. Minneap.			8-12-70, 2-27-41
					12+81.0	12+78.0						
13+0	103.90	95.82	8.08		13+16.0	13+13.0	#2953, #472		1205 S. Minneap.	1201 S. Minnes.	8-12-70	8-12-70, 10-23-41, 4-23-41
					13+33.0	13+30.0						
		95.85		13+37.0								

#173 - Tap - 1264 S. Minneapolis - 5-28-46 - Chas Callison