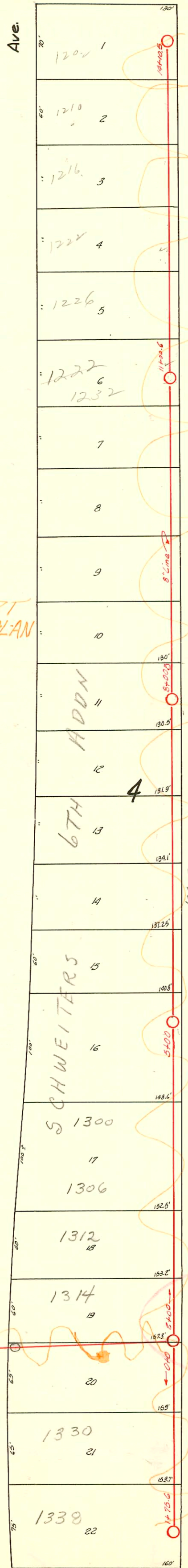


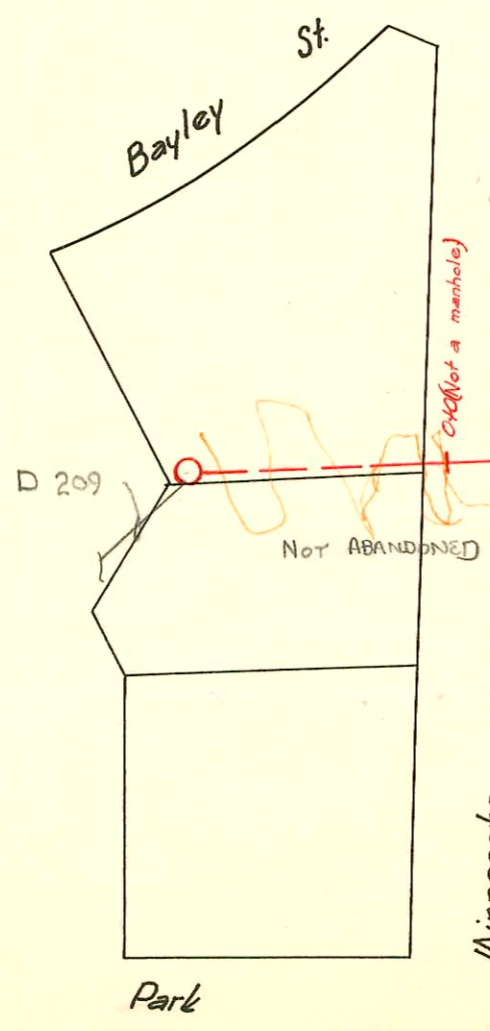
Lincoln St



LAT. 17-S.S. #20  
W.B. CARTER  
1938

CHANGES BY STATE HW DEPT  
BOOKED 8-6-77 AS BUILT PLAN

10' EASEMENT ON LOTS 1-22 INCL.



TRAP AREA

D-212

CONSTRUCTION RECORD						SERVICE RECORD						
STATION	ELEVATION		Depth	MANHOLE	4-INCH "Y" BRANCHES		No. of Permit		House Number		DATE OF PERMITS	
	Ground	Grade			North West	South East	North West	South East	North West	South East	North West	South East
0+0	100.80			(No M.H.) 0+0	is sta. 6+44.2, Line 1, Lat. 16, S.S. # 20							
1+0	101.30											
2+0	102.50	95.03	6.47	2+00.0	2+62.0		#C44700 2070		1318 S. Minnesota	Seal off	5-2-74 6-13-48	
					2+93.0		#C44499 2069		1306 S. Minnesota	Seal off	5-2-74 6-13-48	
3+0	102.40	95.13	6.27		3+25.0		#C44698 2068		1300 S. Minnesota	Seal off	5-2-74 6-13-48	
					3+73.8		#C32278 1233		1296 S. Minnesota	Seal off	5-17-72 1-28-47	
4+0	103.00	95.23	7.77		4+71.0		#C34621 1975		1292 S. Minnesota	Seal off	4-5-42 2-10-47	
					4+95.0		#C17678 2975		1290 S. Minnesota	Seal off	1-16-70 12-23-40	
5+0	103.30	95.33	7.97	5+00.0	5+25.5							
					5+53.4							
					5+86.0		#C20528 1043		1288 S. Minnesota	Seal off	8-12-70 8-12-48	
6+0	103.50	95.43	8.07		6+11.0		#C19223 1042		1274 S. Minnesota	Seal off	5-11-70 8-12-48	
					6+43.7							
					6+71.0		#C19224 834		1268 S. Minnesota	Seal off	5-11-70 12-29-41	
7+0	103.60	95.53	8.07		7+04.0		#C21273 2682		1262 S. Minnesota	Seal off	11-8-70 9-23-40	
					7+37.7							
					7+61.5							
					7+94.4							
8+0	104.70	95.63	9.07	8+00.5	8+28.8		#C19225 1947		1258 S. Minnesota	Seal off	5-11-70 5-26-48	
					8+58.0		#C19249 1558		1252 S. Minnesota	Seal off	2-19-70 4-20-48	
					8+86.0							
9+0	105.00	95.73	9.27		9+13.5		#C19226 3574		1246 S. Minnesota	Seal off	5-11-70 6-3-41	
					9+43.5							
					9+75.0		#C19227 1946		1240 S. Minnesota	Seal off	5-11-70 5-26-48	
10+0	104.80	95.83	8.97		10+04.5		#C17011 1923		1232 S. Minnesota	Seal off	11-21-69 5-22-48	
					10+34.0							
					10+65.0							
					10+94.5							
11+0	104.70	95.93	8.77	11+00.6	11+25.5		#C18248 1226		1222 S. Minnesota	Seal off	2-19-70 1-20-47	
					11+55.5		#C18141 1925		1226 S. Minnesota	Seal off	2-26-70 5-26-48	
					11+86.5							
12+0	104.90	96.03	8.87		12+16.5		#C18144 1944		1216 S. Minnesota	Seal off	2-26-70 5-26-48	
					12+46.0							
					12+74.0		#C18143 3451		1210 S. Minnesota	Seal off	2-26-70 5-3-41	
13+0	105.00	96.13	8.87		13+04.0							
					13+34.7							
					13+64.7							
14+0	104.80	96.23	8.57		14+06.0		#C19229 1943		1202 S. Minnesota	Seal off	5-11-70 5-26-48	
		96.24		14+10.5								
0+0	102.50	95.03	6.47	0+0 (2+00)	0+15.5		#C44130 2540		1252 S. Minnesota	Seal off	3-26-74 8-1-40	
					0+20.5							
					0+74.0		#C44702 3963		1330 S. Minnesota	Seal off	5-2-74 8-6-41	
1+0	103.20	95.23	7.97		1+10.4		#C44703 1208		1338 S. Minnesota	Seal off	5-2-74 12-26-46	
					1+31.0							
					1+53.0							
	103.20	95.39	7.81	1+75.6								

C44701 #3575 - Top at 8+35 (1314 S. Minnesota) 6-3-41 J.C. Hendricks 5-2-74 C.P. Rutledge