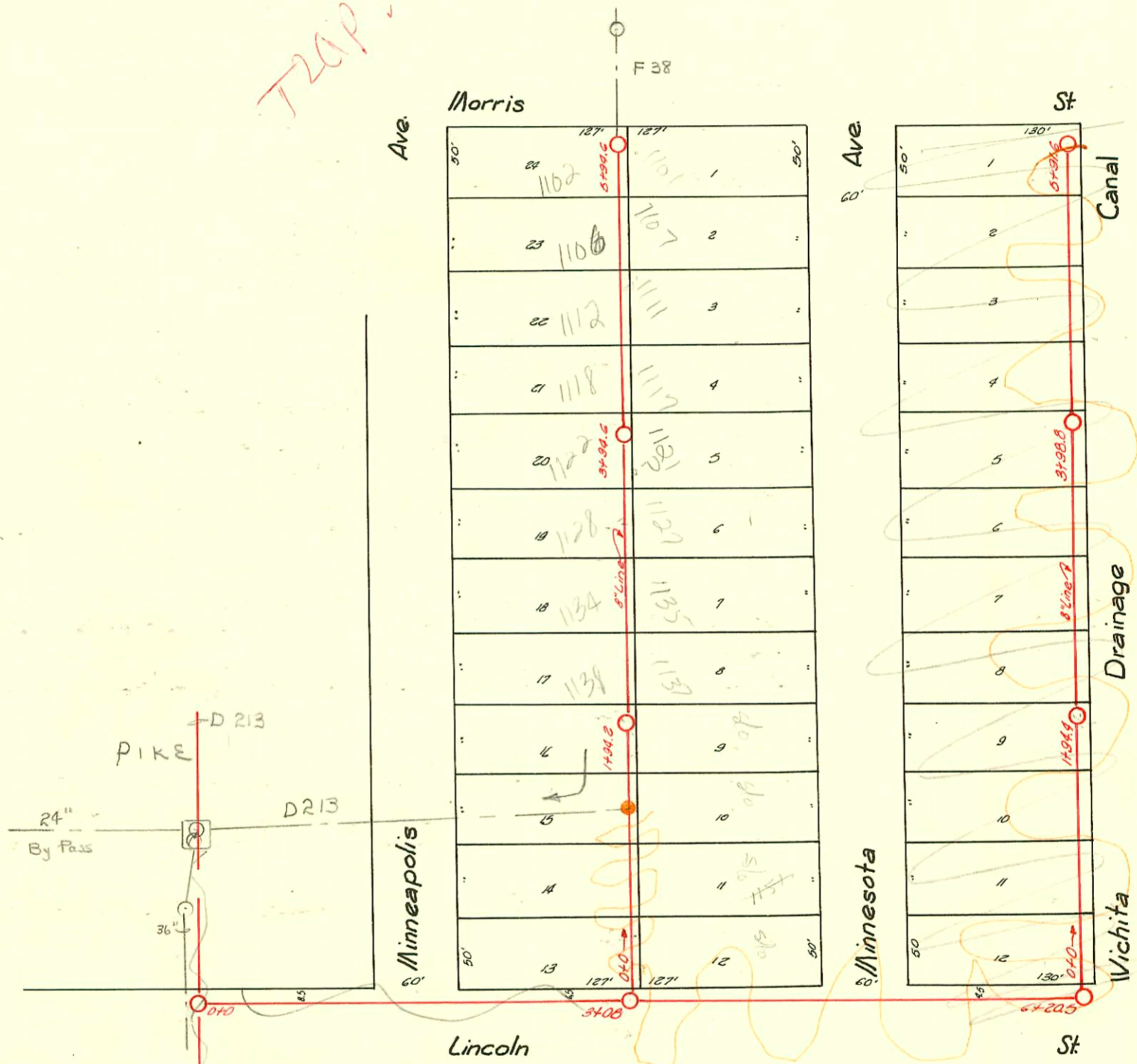


TRAP AREA



CHANGES BY STATE HWY DEPT
BOOKED 8-6-77 AS BUILT PLAN

LAT 19 - S.S. # 20
W. B. CARTER
1941

SCALE 1"=100'

D-216

CONSTRUCTION RECORD							SERVICE RECORD					
STATION	ELEVATION		Depth	MANHOLE	4-INCH "Y" BRANCHES		No. of Permit		House Number		DATE OF PERMITS	
	Ground	Grade			North West	South East	North West	South East	North West	South East	North West	South East
0+0	105.00	95.30	9.70	0+0								
					0+14.0		#322201		1158 S. Minnesota		12-16-70	
					0+37.6		3240				3-31-41	
					0+61.6							
					0+86.0		#32297		1152 S. Minnesota		5-17-72	
1+0	104.90	95.38	9.52		1+10.0		4080				8-12-41	
					1+34.7		#32990		146 S. Minnesota		1-11-72	
					1+58.6		4036				8-11-41	
					1+83.3		#31620		145 S. Sealoff		4-17-72	
				1+94.4			4037		Minnesota		8-11-41	
2+0	105.25	95.48	9.77		2+10.2		S.P. #3579		1138 S. Minnesota		10-5-72	
					2+34.8		4038				8-11-41	
					2+59.2		#33966		1134 S. 50. Minnesota		7-31-72	
					2+83.6		4081				8-12-41	
3+0	104.20	95.58	9.62		3+08.8		S.P. #35790		1128 S. Minnesota		10-3-72	
					3+32.6		4082				8-12-41	
					3+59.7		#32967		1122 S. Minnesota		6-16-72	
					3+84.6		4083				8-12-41	
				3+94.8								
4+0	103.00	95.68	8.32		4+09.0		#32767		118 S. Minnesota		6-16-72	
					4+32.2		4084				8-12-41	
					4+60.7		#33860		112 S. Sealoff		7-25-72	
					4+83.2		4085		Minnesota		8-12-41	
5+0	103.20	95.78	7.42		5+09.0		S.P. #31220		1106 S. Minnesota		2-15-73	
					5+35.6		4086				8-12-41	
					5+60.0		#37215		1102 S. Minnesota		2-15-73	
				5+91.6			3246				3-29-41	
0+0	104.10	95.00	9.10		0+19.4	0+16.4	#19219	#18145	1158 S. Sealoff	1157 S. Sealoff	5-11-70	2-26-70
					0+27.9	0+40.5	3344	3329	Minneapolis	Minnesota	4-18-41	4-16-41
					0+57.0	0+64.0	#11045	#11842	1152 S. Sealoff	1151 S. Sealoff	2-18-70	2-22-70
					0+91.4	0+88.4	360	3310	Minneapolis	Minnesota	8-2-42	7-22-41
1+0	104.40	95.10	9.30		1+16.0	1+13.0	S.P. #37639	#32990	1128 S. Sealoff	1127 S. Sealoff	1-11-72	1-11-72
					1+40.7	1+37.7	3328	3309	Minneapolis	Minnesota	4-16-41	7-24-41
					1+62.0	1+61.0	#31620	#32766	1142 S. Sealoff	1143 S. Sealoff	4-17-72	6-16-72
					1+85.3	1+82.3	3327	3249	Minneapolis	Minnesota	4-16-41	3-31-41
				1+94.2								
2+0	104.60	95.20	9.40		2+13.5	2+10.5	#3326	#3521	1138 S. Minneapolis	1137 S. Minnesota	4-16-41	5-22-41
					2+37.3	2+34.3						
					2+62.5	2+61.5	#3457	#975	1134 S. Minneapolis	1135 S. Minnesota	5-9-41	8-5-42
					2+85.9	2+82.9						
3+0	105.20	95.30	9.90		3+09.5	3+06.5	#20216	#3220	1123 S. Sealoff	1127 S. Sealoff	1-17-72	3-24-41
					4" SCH 40	3+30.9	3220	3219	Minneapolis	Minnesota	3-24-41	3-24-41
					3+55.9	3+52.9	#421	#	1122 S. Minneapolis		8-22-41	
					3+61.6	3+59.6						
					3+86.5	3+83.5		#3363	1127 S. Minnesota		4-23-41	
				3+94.6								
4+0	105.90	95.40	9.60		4+13.2	4+10.2	#3532	#3340	1118 S. Minneapolis	1117 S. Sealoff	see Below for DC	10/1/50
					4+37.8	4+34.8					5-26-41	7-29-41
					4+61.9	4+58.9	#3971	#	1111 S. Minnesota			8-7-41
5+0	105.80	95.50	10.5		5+13.7	5+10.7	#3757	#3965	1106 S. Minneapolis	1107 S. Minnesota	6-30-41	8-6-41
					5+38.0	5+35.0						
					5+61.4	5+58.4	#3454	#	1102 S. Minneapolis		5-9-41	
					5+87.0	5+84.0	#40346	3251	1101 S. Minnesota		5-20-72	3-31-41
	104.60	95.60	9.0	5+94.6								
Line in Lincoln Street												
0+0	102.30	94.50	7.80	0+0								
1+0	103.00	94.60	8.40									
2+0	103.70	94.70	9.00									
3+0	104.10	94.80	9.30	3+08.7								
4+0	104.30	94.90	9.40									
5+0	104.40	95.00	9.60									
6+0	104.80	95.10	9.70									
		95.13		6+20.6								

Reconnect - 2000-02275- 1117 S Minnesota-1017100-McClurgs- 4" SCH 40, CITY PREDCO, 2-Way Co, 1V22, TRAP, 1 Fernco to cast iron at house, 35' N of MH 3794.6 (4+29.6)
 2002-00169- 122102- 1128 S Minneapolis. Padgett Ex- 4" SCH 40 Predco Saddle 61' S of MH 3794.2 (3+33.6) 1V22, 1U45, 2H22, TRAP

C 39900 #1959- top in MH 3+94.6 - Frederick Pkg. - 192 E. Morris (Special Fee \$10.00 paid 3-27-42) 7-6-73 (see F-38)
 # B-321 - Top - 1158 S Minneapolis - 10-28-63 - Severn Pkg (2757) - Line in Lincoln