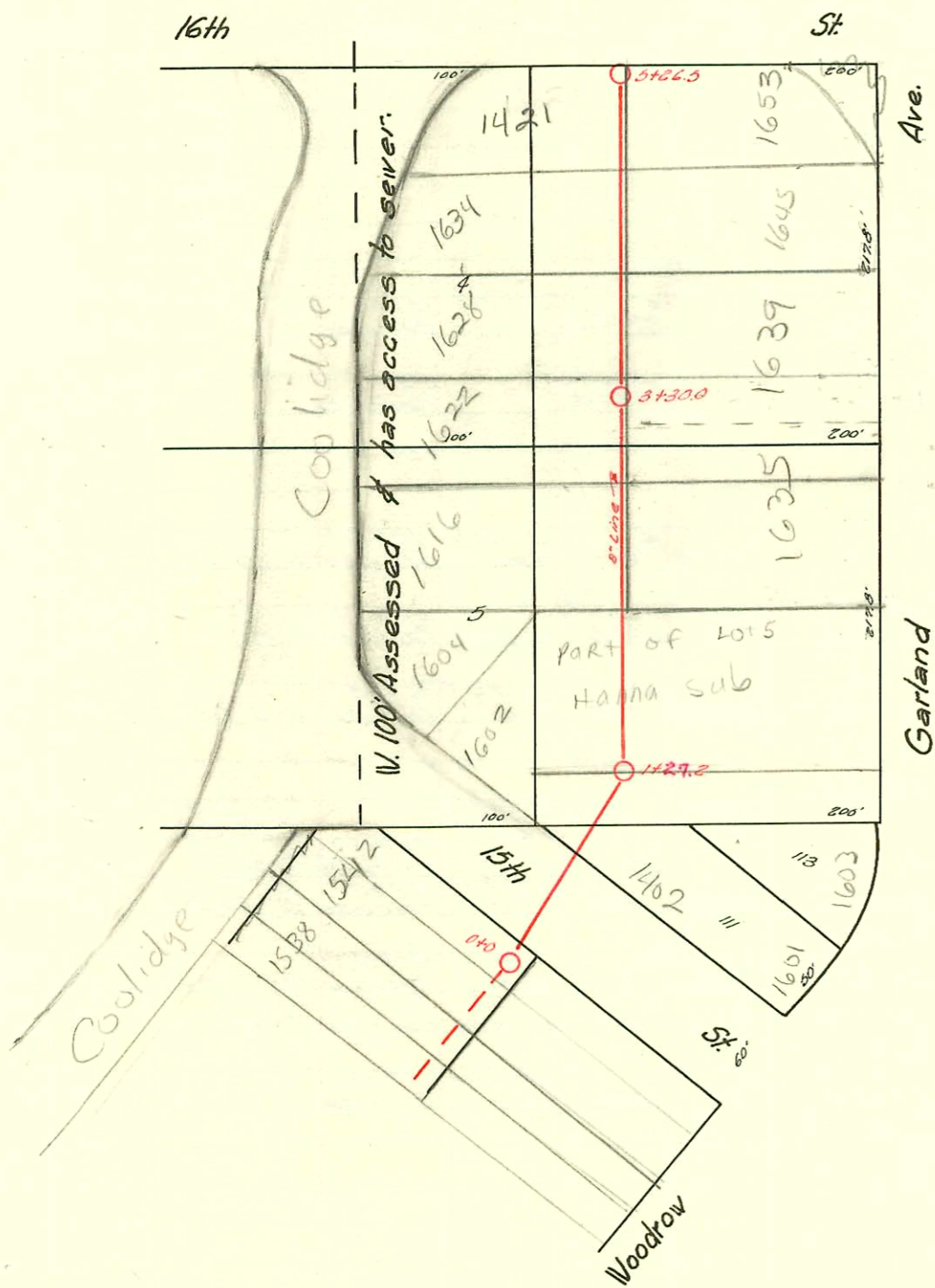


LAT. V - DIST. 2 - S.S. # 20
 W. B. CARTER
 1941



LAT. 3 - DIST. 2 - S.S. # 20
 W. B. CARTER
 1939

D-217

CONSTRUCTION RECORD							SERVICE RECORD					
STATION	ELEVATION		Depth	MANHOLE	4-INCH "Y" BRANCHES		No. of Permit		House Number		DATE OF PERMITS	
	Ground	Grade			North West	South East	North West	South East	North West	South East	North West	South East
0+0	124.77	115.00	9.77	0+0								
1+0	124.70	115.10	9.60		0+90.0	0+87.0		# 1360	1402 W 15th			3-1-39
		115.13 (out) 115.23 (in)		1+27.2	1+21.0	1+18.0						
					1+44.5	1+41.5		# 4117	1602 Coolidge			8-22-41
					1+68.4	1+65.4		# 4113	1604 Coolidge	1625 Garland		3-14-39
					1+98.0	1+95.0		# 239	1625 1/2 Garland			6-11-46
2+0	126.30	115.30	11.00		2+29.3	2+25.3		# 3406	1616 Coolidge			2-21-50
					2+56.0	2+53.0						
					2+80.5	2+77.5		# 2199		1635 Garland		10-25-49
3+0	127.00	115.40	11.60		3+06.0	3+03.0						
				3+30.0								
					3+38.6	3+35.6		# 2130	1628 Coolidge	1639 Garland		6-20-42
					3+64.3	3+61.3		# 2126				6-20-42
					3+88.7	3+85.7						
4+0	126.00	115.50	10.50		4+14.0	4+11.0		# 1231	1634 Coolidge	1645 Garland		6-20-42
					4+37.2	4+34.2		# 1352		1631 Garland		2-18-39
					4+65.0	4+62.0						
					4+90.5	4+87.5		# 2132	1421 W 16th	1653 Garland		6-20-42
5+0	122.60	115.60	7.00		5+18.0	5+15.0		# 2128				6-20-42
	122.20	115.64	6.56	5+26.5								
0+0	124.80	113.37	11.43	0+0								
					0+07.5							
					0+13.5	0+10.5						
					0+25.0	0+22.0		# 166	1616 Perry			6-9-48
					0+56.3	0+59.3		# 4026		1601 Coolidge		3-5-51
					0+83.9	0+86.9						
1+0	123.80	113.47	10.33		1+07.6	1+10.6		# 574	1620 Perry			6-22-49
					1+39.0	1+42.0						
					1+70.0	1+73.0		# 1859	1622 Perry			10-4-49
	124.20	113.56	10.64	1+88.6								
					1+93.3	1+96.3						
2+0	124.20	113.57	10.63		2+20.2	2+23.2						
					2+45.4	2+48.4						
					2+72.4	2+75.4		# 1915	1640 Perry			8-10-50
3+0	124.70	113.67	11.03		3+02.2	3+05.2		# 646		1609 Coolidge		6-12-46
					3+37.2	3+34.2		# 2073		1627 Coolidge		6-15-42
					3+68.0	3+65.0		# 2072		1635 Coolidge		6-15-42
4+0	124.60	113.77	10.83		4+00.7	3+37.7						
	124.00	113.79	10.61	4+22.2	1-4" stub N.	1-4" stub NE		# 2071		1639 Coolidge		6-15-42

7/24/00R 2000-01685- 2111 N Rock Rd (Best Buy) Three R Const - 4" PVC - Grease Interceptor - Wye to exist sewer
2-Twin Cleanouts, 2-Kickouts, 2 V 45, 1 H 45

24163
2129 - 1622 Coolidge - Tap - Wichita Pllg. - 6-20-42 (3116 1st)
? - Tap - 1619 Coolidge - 9-27-46 - Perry
? - Tap at 2+05.5 - 1632 Perry - 6-20-47 - Cherry
? - Tap - 1608 Perry - 5-7-48 - Davidson Pllg.