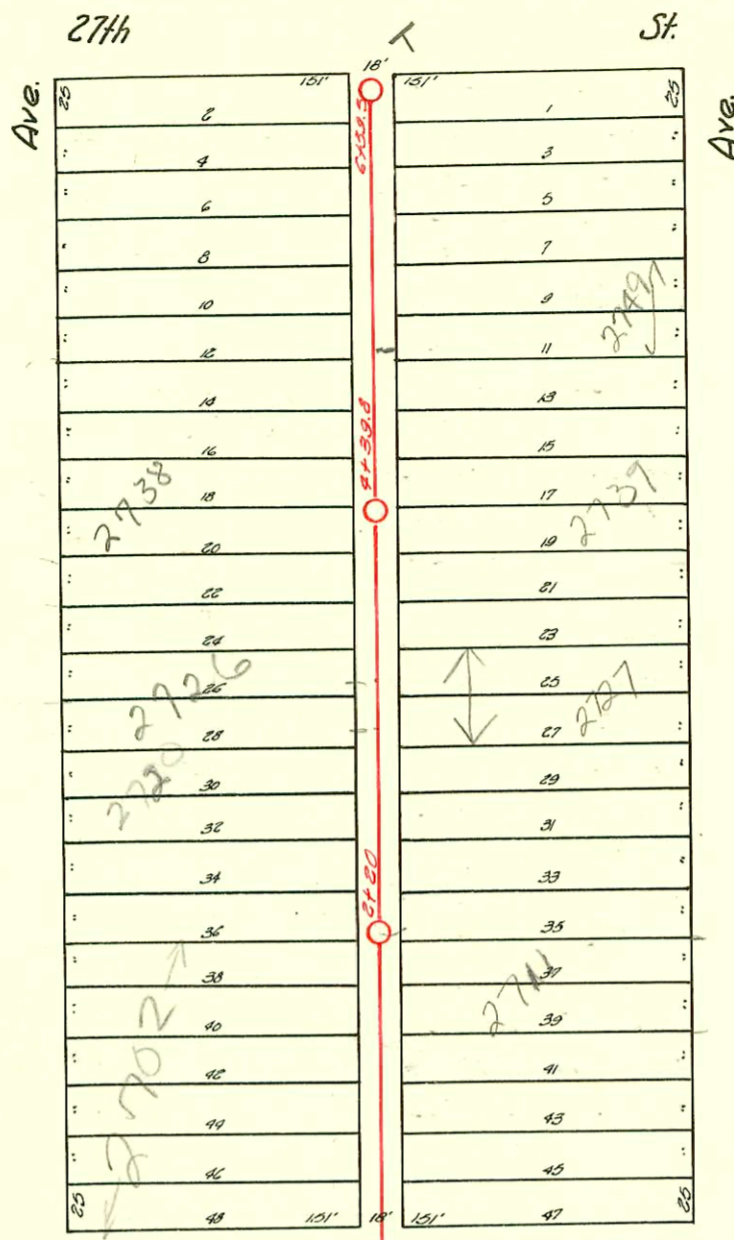
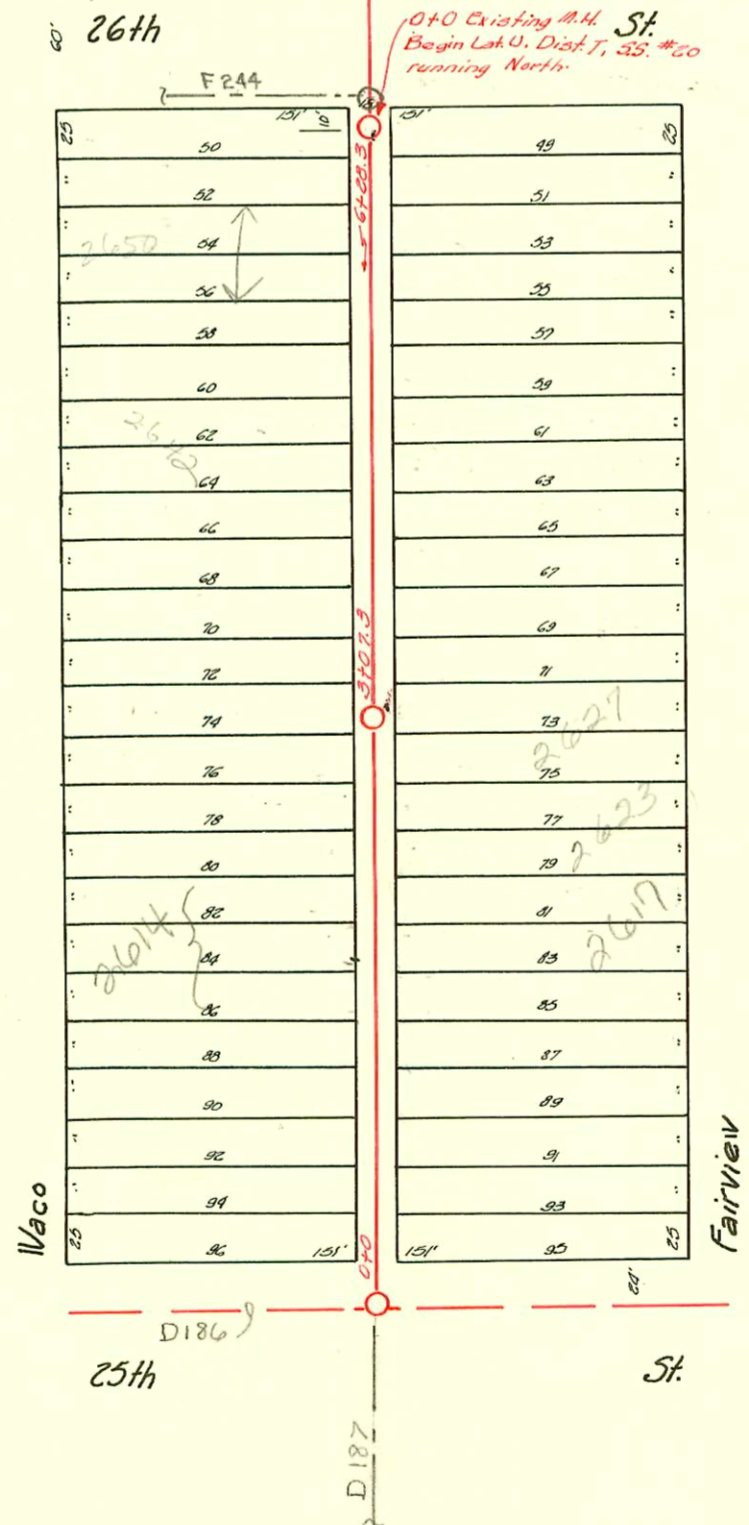


Plat
9-31



LAT. U-DIST. T - S.S. #20
 HENSLEY INC. - CONT.
 B.L. #58 J, PROJ. #C-21-66
 1952



LAT. J - DIST. T - S.S. #20
 W.B. CARTER
 1942

115
100

D-218

CONSTRUCTION RECORD							SERVICE RECORD					
STATION	ELEVATION		Depth	MANHOLE	4-INCH "Y" BRANCHES		No. of Permit		House Number		DATE OF PERMITS	
	Ground	Grade			North West	South East	North West	South East	North West	South East	North West	South East
0+0	124.70	116.50	8.20	0+0	0+28.6	0+25.6			2602 N. Waco			7-18-44
					0+53.4	0+50.4	#1655					
					0+77.4	0+74.4						
1+0	124.30	116.60	7.70		1+04.9	1+01.9	#1912	#540	2608 N. Waco	2609 N. Fairview	2-14-45	4-27-43
					1+28.7	1+25.7		#1153		2615 Fairview		6-9-54
					1+53.5	1+50.5	2000-0197		2614 N. Waco		5-12-00	
					1+73.7	1+74.7				2617 Fairview		
2+0	124.40	116.70	7.70		2+04.6	2+01.6	#2041	#391	2620 N. Waco	2621 Fairview	12-8-80	4-1-43
					2+28.6	2+25.6	#7323	#1039		2622 Fairview	1-12-54	4-29-52
					2+53.5	2+50.5	#2041					
					2+78.0	2+75.0	#7324		2622 N. Waco		1-12-54	
3+0	124.20	116.80	7.40		3+01.3	2+98.3		#1531		2627 Fairview		7-19-54
				3+07.3								
					3+22.7	3+26.7	#106	#693	2632 N. Waco	2625 Fairview	5-18-52	3-8-52
					3+53.9	3+50.9						
					3+80.8	3+77.8	#7190		2638 N. Waco		12-9-53	
4+0	124.20	116.90	7.30		4+05.0	4+02.0		#1158		2637 Fairview		5-7-52
					4+32.6	4+29.6		#222		2635 Fairview		3-8-52
					4+56.9	4+53.9	4090				7-9-55	
					4+81.3	4+78.3						
5+0	124.70	117.00	7.70		5+07.6	5+04.6	#1778	#666	2626 N. Waco	2647 Fairview	10-19-44	6-24-49
					5+32.7	5+29.7						
					5+56.6	5+53.6	#9493	#6000	2650 N. Waco		6-25-74	1-10-58
					5+84.2	5+81.2						
6+0	125.60	117.10	8.50		6+07.9	6+04.9		#2270		2655 Fairview		10-29-49
	125.60	117.11	8.49	6+22.3								
0+00	125.4	117.54	7.9	0+00 Existing M.H.	0+66.0	0+63.0						
					+90.2	+87.2						
1+00	126.3	117.64	8.7		1+14.5	1+11.5		#2472		2701 Fairview		3-10-52
					+38.7	+35.7						
					+66.9	+63.9	#18005	#3264		2711 Fairview		3-31-47
					+93.0	+90.0						1-26-53
2+00	126.1	117.74	8.4									
2+20	126.5	117.76	8.7	2+20	2+52.0	2+49.0	#5563	#1001	2720 N. Waco	2721 N. Fairview	6-15-53	5-20-54
					+76.5	+73.5						
					+98.0	+95.0	2000-00511	#4002	2726 N. Waco	2727 R. Fairview	2-23-06	1-23-92
3+00	126.3	117.84	8.5		3+25.0	3+22.0						5-20-54
					+49.0	+46.0						
					+60.2	+57.2	#6848	#1003	2732 N. Waco	2775 Fairview	11-2-53	5-20-54
					+88.5	+85.5						
4+00	126.7	117.94	8.8		4+25.4	4+13.1	#7204		2738 N. Waco		2-27-92	12-16-53
4+39.8	127.4	117.98	9.4	4+39.8	4+65.0	4+62.0	#5229	#1004	2744 N. Waco	2745 Fairview	5-20-53	5-20-54
					+96.0	+93.0						
5+00	126.9	118.04	8.9		5+26.1	5+23.1	#718	#1005	2748 N. Waco	2749 Fairview	4-21-54	5-20-54
					+56.9	+53.9	#717	#1006	2752 N. Waco	2751 Fairview	4-21-54	5-20-54
					+87.4	+84.4						
6+00	125.5	118.14	7.4		6+15.4	6+12.4	#716	#1532	2756 N. Waco	2757 Fairview	4-21-54	7-18-54
					+45.7	+42.7						
6+59.5	126.1	118.20	7.9	6+59.5								

96-17255-7 10-14-96 2739 N Fairview

#4014-Tap-2635 N Waco-6-8-51-Vaughn Pibg. Co.
 #571-Tap-2702 N Waco-3-7-52-M.C. Phipps
 #754-Tap-2716 N Waco-4-22-54-Milton Bowers
 #2691-Tap-2627 East Fairview Dec. Duffin 1-28-66