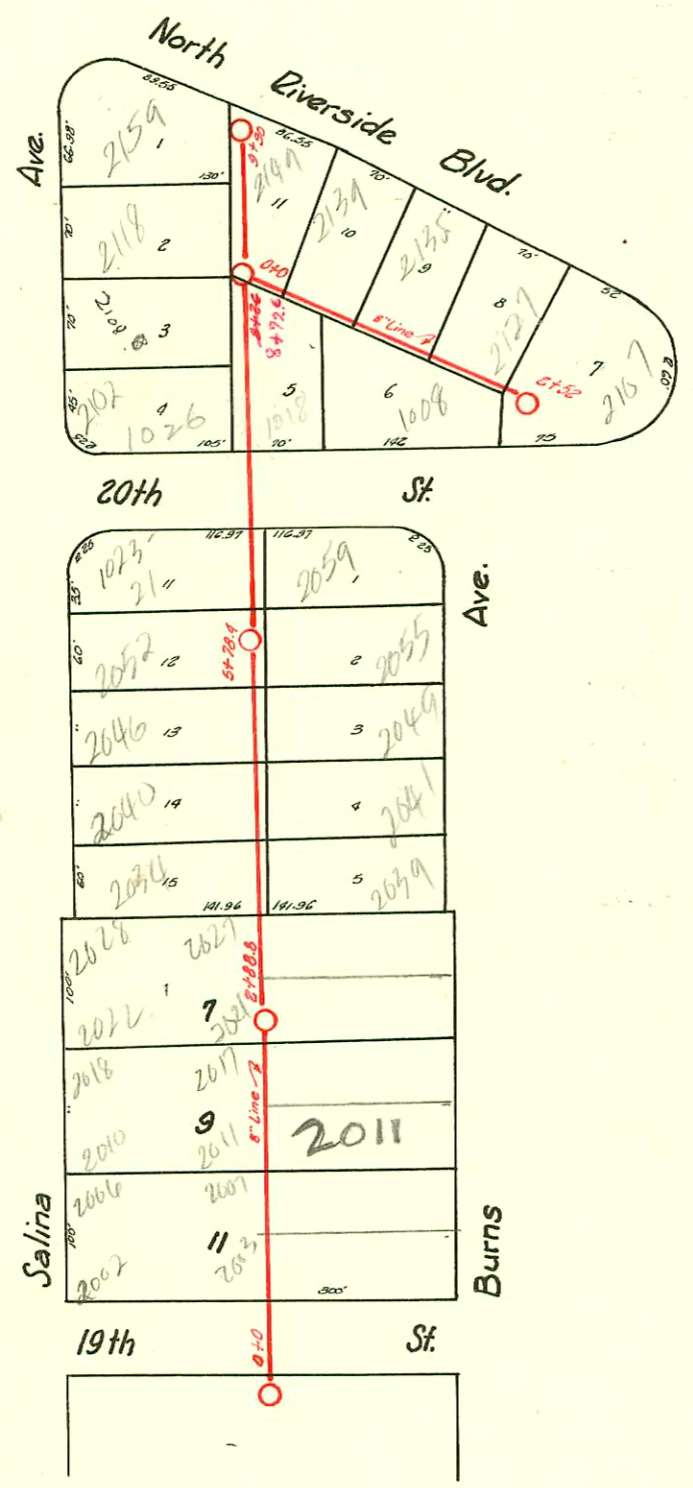


1=150



LAT. T-DIST. R-S.S. # 20
IV. B. CARTER-1941

D-227

CONSTRUCTION RECORD							SERVICE RECORD					
STATION	ELEVATION		Depth	MANHOLE	4-INCH "Y" BRANCHES		No. of Permit		House Number		DATE OF PERMITS	
	Ground	Grade			North West	South East	North West	South East	North West	South East	North West	South East
0+0	120.16	113.00	7.61	0+0								
1+0	121.15	113.10	8.05		0+74.0	0+71.0			2002	2003		
					0+97.4	0+94.4	#336	#397	Salina	Burns	4-7-50	4-7-50
					1+22.4	1+19.4	#2504	#2374	2006	2007	11-17-49	11-9-49
					1+47.6	1+44.6			Salina	Burns		
					1+70.8	1+67.8	#633		2010		9-9-46	
					1+98.6	1+95.6		#631	Salina			9-9-46
2+0	121.65	113.20	8.45		2+23.5	2+20.5	#634	#632	2018	2017	9-9-46	9-9-46
					2+47.7	2+44.7		#1090	Salina	Burns		
					2+72.8	2+69.8			1013 N	20th		12-12-46
				2+88.8								
3+0	121.75	113.30	8.45		2+97.7	2+94.7	#2017	#2016	2022	2021	10-14-49	10-14-49
					3+24.4	3+21.4	#1790	#1789	Salina	Burns	3-17-48	3-17-48
					3+48.6	3+45.6	#1096		2028	2027		
					3+71.8	3+68.8		#2051	Salina	Burns	12-12-46	6-11-48
4+0	122.55	113.40	9.15		4+03.0	4+00.0	#1095	#33	2034	2039	12-12-46	5-15-47
					4+33.4	4+30.4			Salina	Burns		
					4+63.6	4+60.6	#1094		2046		12-12-46	
					4+93.7	4+90.7			Salina			
5+0	123.35	113.50	9.85		5+22.0	5+19.0	#1093	#1101	2056	2049	12-12-46	2-14-45
					5+52.7	5+49.7		#990	Salina	Burns	3-3-42	2-6-42
				5+78.4								
6+0	123.25	113.60	9.65		6+11.8	6+08.8	#3080		1021-23		1-3-55	
					6+43.0	6+40.0			Salina			
7+0	123.45	113.70	9.75		7+29.9	7+26.9	#3081	#23921	2108	1018 N	1-18-50	8-23-46
					7+68.7	7+65.7		1089	Salina	20th		12-12-46
					7+99.0							
8+0	122.85	113.80	9.05		8+34.6							
				8+72.6								
					8+84.6	8+81.6	#5074		2118		6-25-51	
					9+07.5	9+04.5			Salina			
9+0	120.05	113.90	6.15		9+41.7							
					9+83.4							
				9+90.0								
0+0	119.75	114.00	5.75	0+0	North	South						
					0+50.0	0+47.0						
					0+78.0		#2414		2139 N		11-14-49	
1+0	121.90	114.10	7.80		1+13.0	1+10.0			Riverside			
					1+45.5	1+42.5	#657	#1639	2133 N	1008 W	4-22-50	12-4-48
					1+79.5	1+76.5			Riverside	20th		
2+0	124.65	114.20	10.45		2+13.5	2+10.5	#2933		2127 N		12-27-49	
				2+50.0	Stub N.E. in M.H.				Riverside			

#1090-Tap-1013 N. 20th-12-12-46-Dermody
 #1749-Tap-2107 N. Riverside-7-25-50-B. La Fay
 #1460-Tap-2149 N. Riverside-6-28-50-B. La Fay
 #2197-Tap-2150 N. Riverside-10-17-50-E. Reynolds - 612701- Aash No Leaks-4" SCH40 ITWIN CO, 1422
 #14174-Tap-1026 22. 20th St - 5-11-61-Edw. Zellerbach - (7+16)