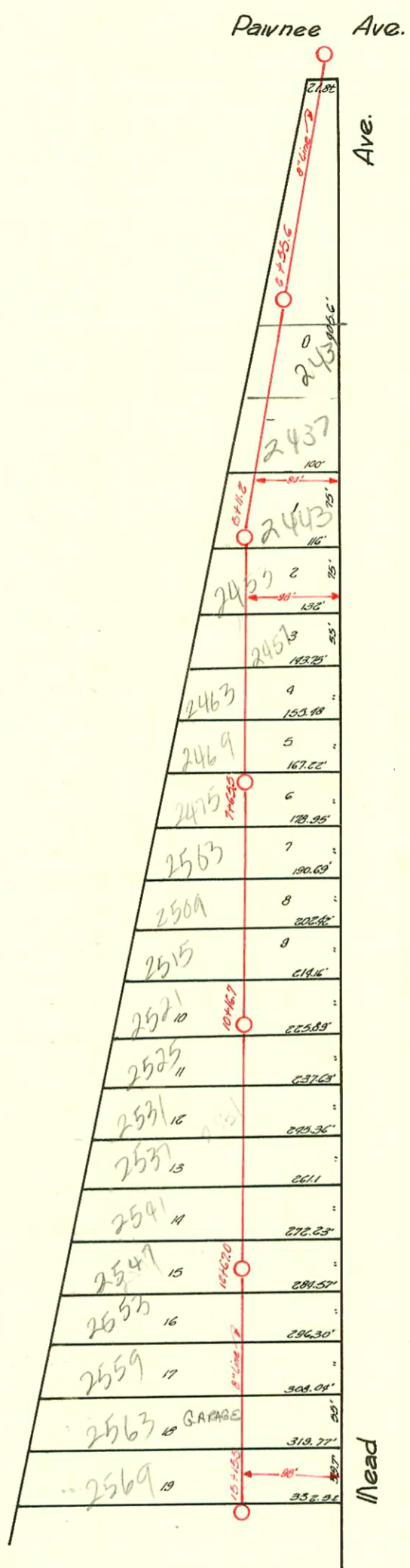


LAT. 1 - DIST. A - S.S. # 20  
W.B. CARTER-1941



TRAP AREA

D-229

CONSTRUCTION RECORD						SERVICE RECORD						
STATION	ELEVATION		Depth	MANHOLE	4-INCH "Y" BRANCHES		No. of Permit		House Number		DATE OF PERMITS	
	Ground	Grade			North West	South East	North West	South East	North West	South East	North West	South East
0+00	98.0	87.80	10.2	0+00								
1+00	97.6	87.90	9.7									
2+00	97.5	88.00	9.5									
3+00	97.3	88.10	9.2	2+55.6								
					Seal off 3+82.7			2003-01655 # 4055		2431 2435 S. Head 510		37503 8-6-42
4+00	97.5	88.20	9.3									
					4+05.9 Seal off 4+54.3 4+79.5			2003-01655 # 4057		2443 S. Head 510 51' N of SPL		4203 8-11-41
5+00	98.0	88.30	9.7									
				5+11.2								
					5+14.0 5+32.3 5+87.8			# 4056		2451 S. Head		8-11-41
6+00	97.9	88.40	9.5									
					6+08.5 6+42.0 6+63.0 6+97.5			# 4055 # 2433 165 4054		2457 S. Head 2463 S. Head (C.O. only)		8-11-41 6-24-43 8-11-41
7+00	97.4	88.50	8.9									
					7+17.2 7+53.0			# 4053		2463 S. Head		8-11-41
				7+65.5								
					7+73.4			# 4052		2475 S. Head		8-11-41
8+00	97.4	88.60	8.8									
					8+04.0 8+25.8 8+58.9 8+83.5			# 4051 # 4050		2503 S. Head 2509 S. Head		8-11-41 8-11-41
9+00	97.7	88.70	9.0									
					9+14.3 9+36.2 9+71.0 9+94.3			# 4049 # 4048		2515 S. Head 2521 S. Head		8-11-41 8-11-41
10+00	98.0	88.80	9.2									
				10+16.7								
					10+27.0 10+47.7 10+80.8			# 4047		2525 S. Head		8-11-41
11+00	97.2	88.90	8.3									
					11+01.0 11+29.7 11+56.3 11+84.0			# 4046 # 4045		2531 S. Head 2537 S. Head		8-11-41 8-11-41
12+00	96.2	89.00	7.2									
					12+11.8 12+41.3 12+62.5			# 4044 # 4043		2541 S. Head 2547 S. Head		8-11-41 8-11-41
				12+67.0								
					12+95.8							
13+00	96.1	89.10	7.0									
					13+23.5 13+52.8 13+74.0			# 4042 # 4041		2553 S. Head 2557 S. Head		8-11-41 8-11-41
14+00	95.3	89.20	6.1									
					14+17.5 14+47.0 14+32.4 14+60.2 14+88.0			2003-01655 16836 # 4040 # 4039		2563 S. R seg below Head (BARAGE) 2569 S. Head		6-24-43 8-15-46 8-11-41 8-11-41
15+00	93.8	89.30	4.5									
				15+15.5								

2003-01655 124103 2463 Head - Jim High Plog - inspector Peterman marked for corrections - don't know what was done - covered prior to inspection

2003-01655 # 2431-Top-2431 S. Head 8-6-42 - Bimmers Plog. Co. old with concrete 12 S of MH 2455.6 (3+27.6)