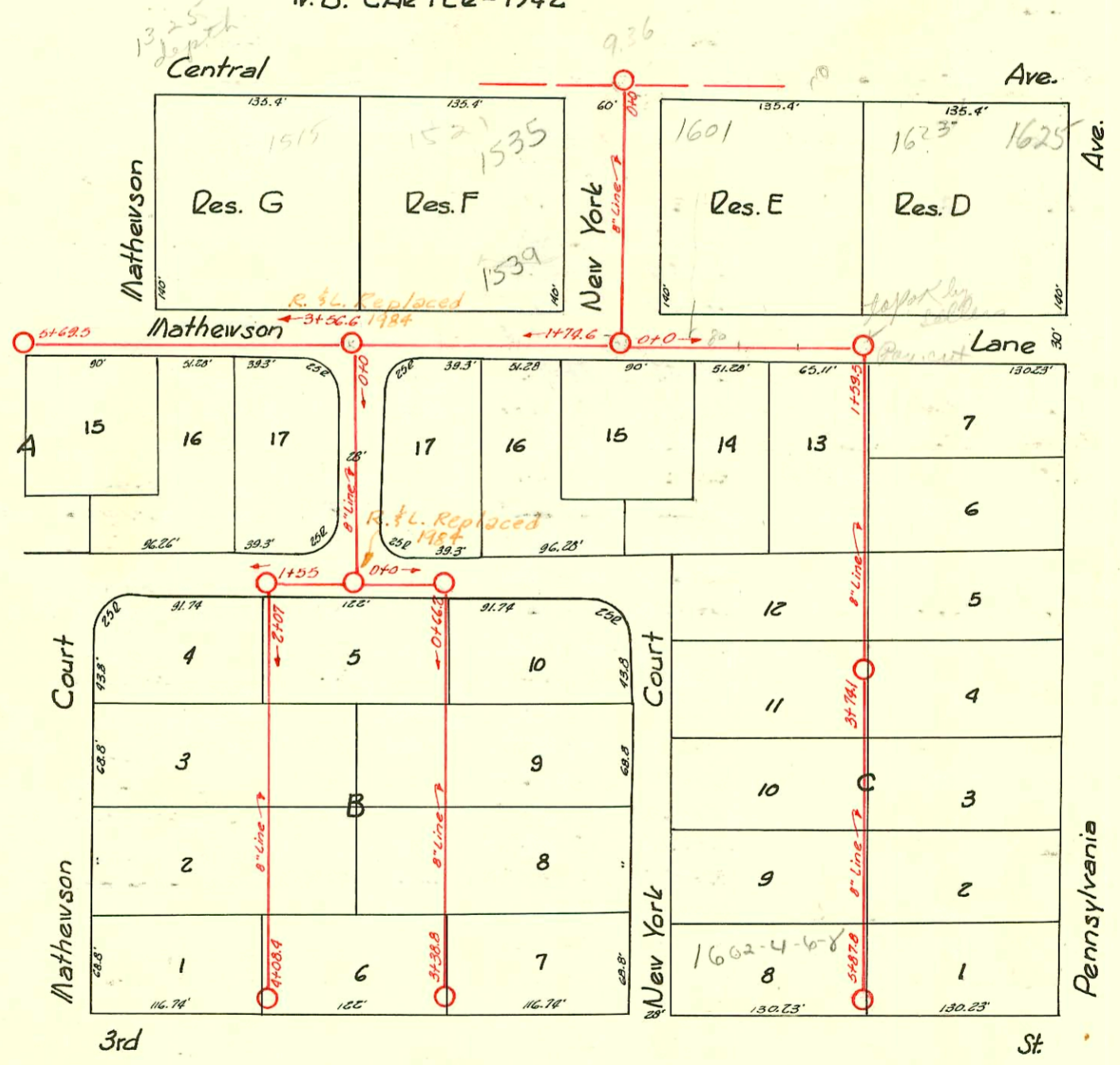


LAT. 2 - DIST. Y - S.S. # 20  
IV. B. CARTER - 1942



2003-01691 s/o 1600 E 3rd St N - McCullough Exc - sealed w/ concrete in MH 8"

CONSTRUCTION RECORD

SERVICE RECORD

STATION	ELEVATION		Depth	MANHOLE	4-INCH "Y" BRANCHES		No. of Permit		House Number		DATE OF PERMITS		
	Ground	Grade			North West	South East	North West	South East	North West	South East	North West	South East	
0+0	112.10	102.74	0.36	0+0									
1+0	111.70	102.84	8.86										
				1+74.6									
						1+95.8							
2+0	111.80	103.03	7.77		2+22.7	2+25.7		# 1703	1516	484-6-8-90 New York Ct.		5-8-42	
								# 165	Mathewson Lane	482-9-6-8 Mathewson Ct.		5-27-46	
3+0	112.40	103.13	8.27		3+17.0	3+05.3		# 1747				5-8-42	
				3+56.6									
						3+66.3	3+69.3						
4+0	112.50	103.23	8.27		4+02.3	3+99.3		# 1459		487-99A-99B Mathewson Ct.		4-13-42	
								# 6672	1515 E. Central	489-2-29-25 Mathewson Ct.	10-12-53	4-13-42	
						4+59.8	4+56.8						
							4+90.4		# 1461	479-81-83-85 Mathewson Ct.		4-13-42	
5+0	111.90	103.33	8.57			5+39.1							
				5+69.5									
0+0	112.40	103.25	9.15	0+0	West	East							
1+0	112.50	103.35	9.15										
				1+55									
2+0	112.40	103.55	8.51		2+07								
						2+27.0							
						2+51.5	2+54.5	# 1462	# 1466	440-42-44-46 Mathewson Ct.	450-2-4-6 Math. Ct.	4-13-42	4-13-42
						2+85.2							
3+0	112.20	103.69	8.51			3+04.3	3+07.3						
						3+70.2	3+67.2						
						3+92.2		# 1464	# 1468	410-12-14-16 Mathewson Ct.	454-15-18-20 E. 3rd	4-13-42	4-13-42
4+0	112.50	103.79	8.71			4+25.8	4+28.8		# 1465	1502-04-06 E. 3rd		4-13-42	
						4+41.6							
						4+80.4							
0+0	112.30	103.50	8.80	0+0									
				0+66.2									
							0+91.6						
1+0	112.60	103.68	8.92			1+17.2	1+14.2		# 1742	459-41-43-45 New York Ct.		5-8-42	
							1+46.7		# 1743	459-41-43-45 New York Ct.		5-8-42	
						1+73.5	1+70.5	# 1744		419-21-23-25 New York Ct.		5-8-42	
2+0	112.50	103.78	8.72			2+28.4	2+25.4						
							2+53.1						
						2+90.3	2+93.3	# 1746		1524-26-28 30 E. 3rd		5-8-42	
3+0	112.50	103.88	8.62				3+08.7						
				3+32.8									
0+0	111.80	103.00	8.80	0+0	North	South							
					0+31.6	0+19.3		# 1858		476-78-80-82 New York Ct.		5-18-42	
						0+50.0		# 1857		483-70-72-74 New York Ct.		5-18-42	
					0+77.0	0+80.0	# 2283		1601 E. Central		11-1-49		
1+0	112.30	103.10	9.20		1+16.9	1+19.9		# 1856		436-7-9-41 Pennsylvania		5-18-42	
				1+59.5	West	East		# 1855		443-5-7-9 Pennsylvania		5-18-42	
						2+01.0							
2+0	112.50	103.29	9.21			2+37.4	2+34.4						
							2+64.6		# 2011	427-9-31-33 Pennsylvania		6-4-42	
						2+97.8	2+94.8	# 2017	# 2013	420-2-4-6 New York Ct.	415-21-3-5 Pennsylvania	6-4-42	6-4-42
3+0	112.10	103.39	8.71			3+28.2	3+25.2		# 1752	440-2-4-6 New York Ct.	450-2-4-6 N.Y. Court	5-8-42	6-4-42
				3+74.1			3+59.8						
						3+89.5	3+86.5						
4+0	112.00	103.49	8.51			4+22.7	4+19.7	# 1751	# 2015	450-32-34-36 New York Ct.	424-11-13-15 Penn.	5-8-42	6-4-42
						4+53.2	4+50.2						
						4+83.3	4+80.3	# 1750		410-12-14-16 New York Ct.		5-8-42	
5+0	112.20	103.59	8.61			5+13.7	5+10.7		# 1749	1605-4-6-8 E. 3rd		5-8-42	
						5+48.5	5+45.5		# 2016	1614-16-18-20 E. 3rd		6-4-42	
						5+72.2	5+69.2						
				5+87.8									

# 2008 - Tap - 1625 E. Central - 7-28-58 - Jim Hanna  
 # 1467 - Tap - 420-22-24-26 Mathewson Ct. - Bredie - 4-13-42  
 # 1745 - Tap - 419-11-13-15 New York Ct. - Bredie - 5-8-42  
 # 2014 - Tap - 420-22-24-26 New York Ct. - Bredie - 6-4-42  
 # 2164 - Tap - 1625 E. Central - 7-28-58 - Davidson Pkg. Co.  
 # 1846 - Tap - 1625 E. Central - 3-29-48 - Davidson Pkg. Co.  
 # 302 - Private Line - 1625 E. Central - 5-26-48 - Thompson Pkg. Co.  
 6938 - Tap - 1521 E. Central - Callison - 5-12-58  
 6939 - Tap - 1523 E. Central - Callison - 5-12-58  
 12909 Tap - 1625 E. Central - May - 6-3-60 (MH 1+59.5)  
 # 16678 - Private Line - 1625 E. Central - May - 2-19-63

# 21315 - 11-20-69 - 1535 E. Central - Henning - sealed at NW CORNER of existing Bldg