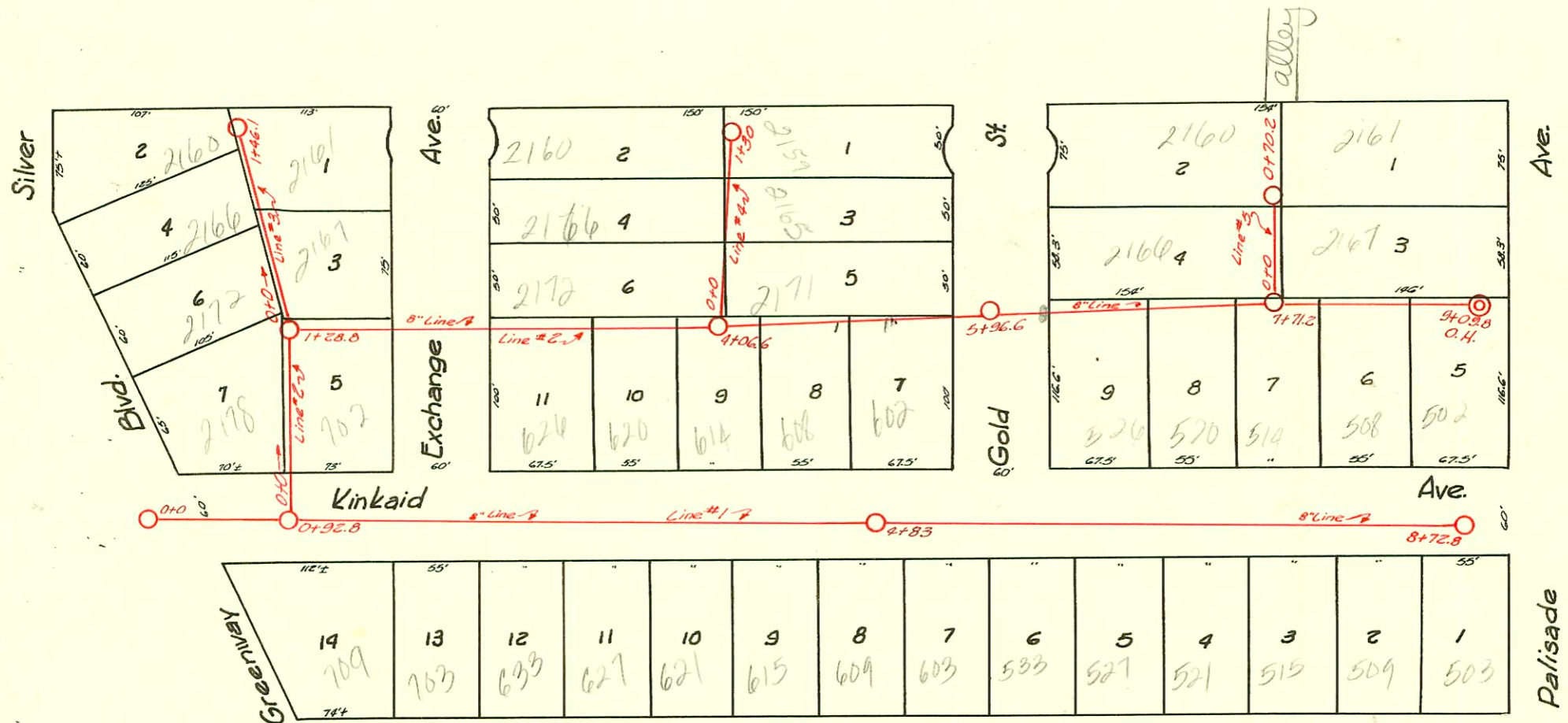


LAT. 3-DIST. A-S.S. #20
 W. B. CARTER-1942



D241

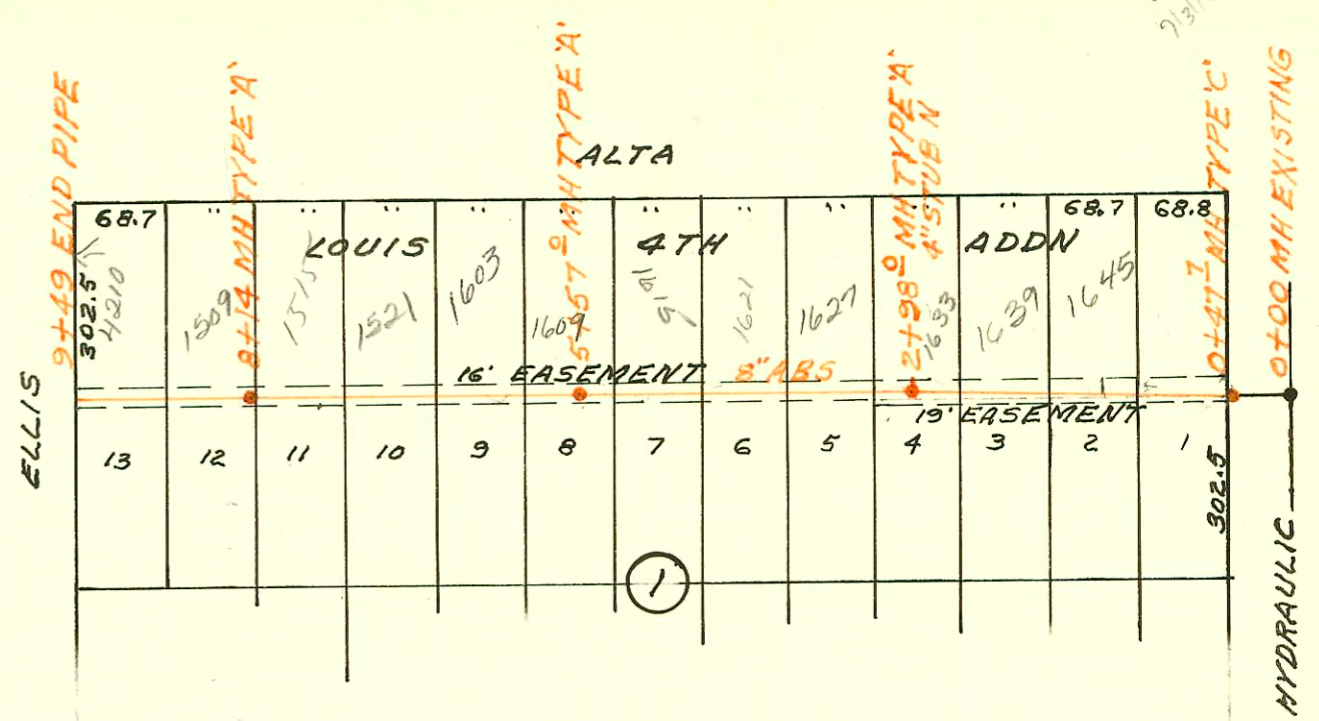
(also see D-240B below for Lines 1-3)

Form 41-(54) 12-54

CONSTRUCTION RECORD						SERVICE RECORD							
STATION	ELEVATION		Depth	MANHOLE	4-INCH "Y" BRANCHES		No. of Permit		House Number		DATE OF PERMITS		
	Ground	Grade			North West	South East	North West	South East	North West	South East	North West	South East	
0+0	98.00	91.85	6.15	0+0									
					0+19.8	0+16.8							
					0+61.5	0+58.5							
					0+85.9	0+82.9	#2585	#12504	2166	2165	Exchange Gold R	8-26-92	4-17-85
1+0	97.50	91.95	5.55		1+09.3	1+06.3							
					1+25.0	1+22.0	#2583	#2582	2160	2159	Exchange Gold	8-26-92	8-26-92
	98.10	91.98	6.12	1+30.0									
0+0	102.00	93.00	9.0	0+0									
					0+26.5	0+23.5	#274967#		2160 R	2157	Gold Palisade	7-19-91	8-17-92
	103.10	93.62	9.5	0+70.2	4" stub	4" stub	#2531	#2530					
LATERAL 4 MAIN I SOUTHWEST INTERCEPTOR													
0+00	84.5	73.11	11.4	EXISTING									
	83.4	73.20 75.26	10.2 8.1	0+47.7									
1+00	83.2	75.43	7.8		Tap 1+50	1+04.7	C71316	C72700	1645 ALTA	#2095 Hydraulic	4-19-79	7-3-79	
					Tap 1+82		C71317		1639 ALTA		4-19-79		
2+00	82.4	75.73	6.7										
	82.1	76.02 76.12	6.1 6.0	2+98.0	4" STUB N		C71318		1633 ALTA		4-19-79		
3+00	82.1	76.13	6.0		Tap 3+57		C71319		1627 ALTA		4-19-79		
4+00	82.4	76.43	6.0		4+19.0		#20400		1621 ALTA		5-27-80		
					Tap 4+81		C72260		1615 ALTA		6-7-79		
5+00	82.2	76.73	5.5										
	82.3	76.90	5.4	5+57.0	Tap 5+61.6		C71655		1609 ALTA		5-8-79		
6+00	82.4	77.03	5.4		Tap 6+24		C72017		1603 ALTA		5-25-79		
					Tap 6+86.4		C72107		1521 ALTA		5-31-79		
7+00	82.9	77.33	5.6		7+61.0		#8192267 9747		1515 ALTA	500 Baldwin	11-30-93		
					Tap 7+91.6		C71591		1509 ALTA		5-1-79		
8+00	82.9	77.63	5.0										
	83.0	77.67	5.3	8+14.0	Tap 8+85.0		C71666		1420 ELLS		5-9-79		
9+00	84.9	77.93	7.0										
9+49	85.2	78.08	7.1										
LATERAL II MAIN I SOUTHWEST INTERCEPTOR													
0+00	85.2	78.08	7.1										
1+00	85.8	78.38	7.4		Tap 1+00.1		C71530		1409 ALTA		5-1-79		
	86.0	78.49	7.5	1+37.7	4" STUB N		C71532		1451 ALTA		5-1-79		
2+00	86.0	78.68	7.3		Tap 2+21.8		C71561		1415 ALTA		5-1-79		
					Tap 2+74.0		C71562		1401 ALTA		5-2-79		
3+00	86.1	78.98	7.1		Tap 3+54.0		C71563		1403 ALTA		5-2-79		
	86.4	79.20	7.2	3+74.0	8" STUB W								

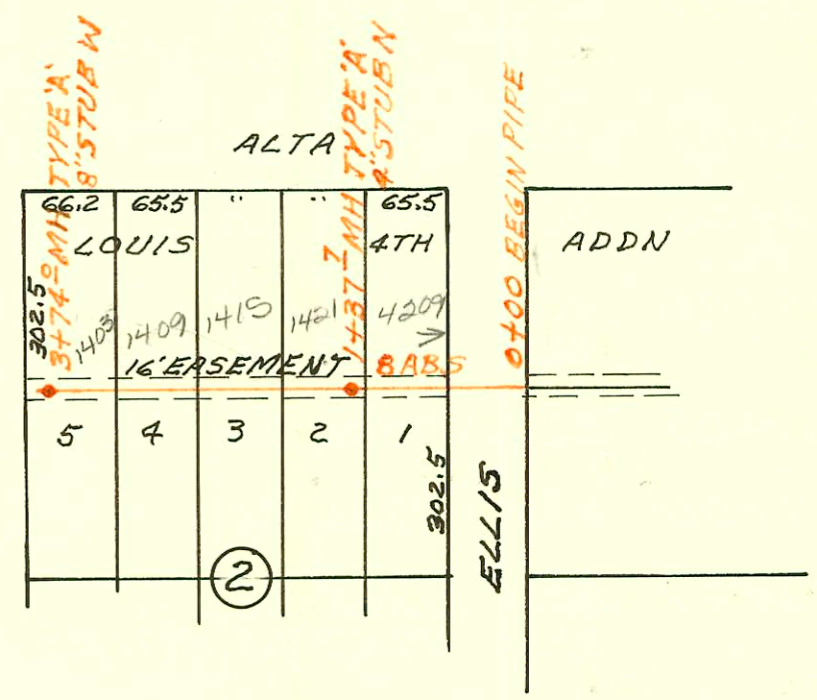
98-26045-1 10/20/98 - 1515 = Rec'd ALTA Clearwater ET - Tap at 7+72 (or 42' E of MH) 4" Sch 40 PVC 1-4" wye for 2nd kick out

SCALE 1" = 150'



LATERAL 4 MAIN 1 SOUTHWEST INTERCEPTOR
 BUILT BY: MID STATES CONST. CO.
 PROJ. NO DBKL 569021
 BOOKED 5-22-79 FROM SRL 9

SCALE 1" = 150'



LATERAL II MAIN 1 SOUTHWEST INTERCEPTOR
 BUILT BY: MID STATES CONST. CO.
 PROJ. NO DBKL 570029
 BOOKED 5-22-79 FROM SRL 9

See D241 for depths

CONSTRUCTION RECORD

SERVICE RECORD

STATION	ELEVATION		Depth	MANHOLE	4-INCH "Y" BRANCHES		No. of Permit		House Number		DATE OF PERMITS	
	Ground	Grade			North West	South East	North West	South East	North West	South East	North West	South East
0+0	101.10	91.00	10.1	0+0		0+53.7						
1+0	98.30	91.10	7.2	0+96.8		1+14.6 1+48.6 1+72.3		# 2883	709 W. Linkaid		10-20-42	
2+0	98.00	91.20	6.8			2+07.7 2+28.5 2+65.2 2+83.4		# 2589 # 2588	703 W. Linkaid 639 W. Linkaid		8-26-42 8-26-42	
3+0	97.60	91.30	6.3			3+23.3 3+38.1 3+71.5 3+95.8		# 2596 # 2595	627 W. Linkaid 621 W. Linkaid		8-26-42 8-26-42	
4+0	97.60	91.40	6.2	4+83.0		4+29.6 4+47.8 4+87.0		# 2594 # 2399	615 W. Linkaid 609 W. Linkaid		8-26-42 7-25-42	
5+0	97.10	91.50	5.6			5+02.3 5+41.0 5+56.4 5+96.4		# 2401 # 2593	603 W. Linkaid 593 W. Linkaid		7-25-42 8-26-42	
6+0	97.40	91.60	5.8			6+13.8 6+52.4 6+70.8						
7+0	97.80	91.70	6.1			7+09.0 7+25.3 7+64.4 7+79.8		# 2592 # 2470 # 2591	527 W. Linkaid 521 W. Linkaid 515 W. Linkaid		8-26-42 8-4-42 8-26-42	
8+0	99.00	91.80	7.2			8+15.7 8+32.0		# 2590	509 W. Linkaid		8-26-42	
	99.40	91.88	7.6	8+72.8								
0+0	98.00	91.20	6.8	0+0	West Y's 0+52.4 0+86.5	East Y's 0+55.4 0+89.5		# 2872	2178 Greenway		10-14-42	
1+0	98.10	91.30	6.8	1+28.8	North Y's 1+51.1	South Y's 1+72.1		# 2405 # 89	2167A Exchange Linkaid	702 W. Linkaid	10-15-42 11-30-42	11-30-42
2+0	98.60	91.40	7.2			2+77.2		# 2586	2172 Exchange Linkaid	626 W. Linkaid	8-26-42	8-26-42
3+0	98.40	91.50	6.9		3+22.6	3+19.6 3+35.3 3+64.1 3+89.8		# 2414	620 W. Linkaid		7-27-42	
4+0	98.00	91.60	6.4	4+06.6		4+22.3 4+43.3 4+81.9 4+78.9 4+98.1 5+30.7		# 2413 # 2412 # 2411 # 2410	614 W. Linkaid 608 W. Linkaid 602 W. Linkaid		7-27-42 7-27-42 7-27-42	
5+0	99.10	91.70	7.4									
6+0	97.60	91.80	6.8	5+96.6		6+33.4 6+66.2 6+93.4		# 2525 # 2526	2166 Gold	526 W. Linkaid	8-17-42	8-17-42
7+0	101.20	92.15	9.05			7+24.0 7+45.1 7+71.2 7+80.9		# 2524 # 2523	520 W. Linkaid 514 W. Linkaid		8-17-42 8-17-42	
8+0	102.80	92.50	10.3			8+01.0 8+32.4 8+66.0 8+63.0 8+95.6		# 2522 # 2521 # 2520	2167 Palisade	508 W. Linkaid 502 W. Linkaid	8-17-42	8-17-42
9+0	102.30	92.88	9.4	0.4 9+09.8								
0+0	98.20	91.45	6.75	0+0	East Y's 0+17.3 0+42.3 0+70.2 ok	West Y's 0+20.3 0+45.3 0+70.7 0+92.8		# 2873 # 2874 # 2875	2172 Greenway 2160 Greenway		10-14-42 10-14-42	11-30-42
1+0	98.30	91.55			1+24.7 1+40.2	1+27.7			2160 Silver		10-14-42	
	98.00	91.60	6.4	1+46.1								

Line #1

Line #2

Line #3