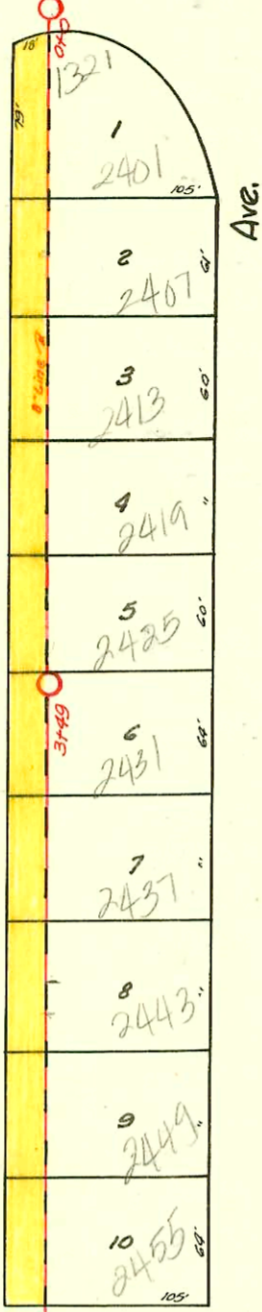


Pawnee Ave.

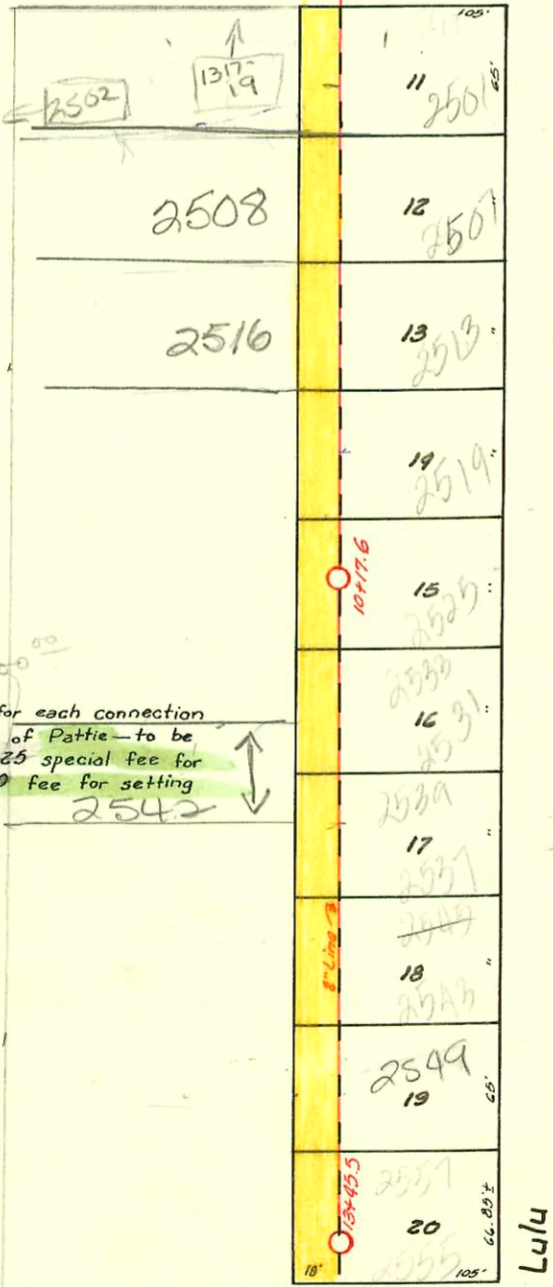


TRAP AREA

Easement: From Womer-Greer Development Co. Inc. - Oct. 12, 1942. W. 18' of Lots 1 to 20, incl., Lulu Ave., Womer-Greer 3rd Add'n.

2444
Pattie

Scott Ave.



6 on 8 wye must be set for each connection for houses on East side of Pattie - to be trapped with 6" trap. \$25 special fee for each connection. \$250 fee for setting wye.

LAT. 2 - DIST. B - S.S. #20

W. B. CARTER-1942

Marion Rd.

2002-02947 10/30/02 2542 s Pattie- RotoRootr- 4"sch 40 PVC install twin cd.

93-18101-7 7/12/93 2412 s Pattie - Henning - City wye repair
4"- 90 off main - Drainlayer said B. Shephard approve - No full on line
1-4" trap 20-4"sch 40 PVC

D242

Form 41-(54) 12-54

CONSTRUCTION RECORD

SERVICE RECORD

STATION	ELEVATION		Depth	MANHOLE	4-INCH "Y" BRANCHES		No. of Permit		House Number		DATE OF PERMITS	
	Ground	Grade			North West	South East	North West	South East	North West	South East	North West	South East
0+0	97.5	88.52	8.98	0+0								
						0+24.2						
						0+60.5						
1+0	97.2	88.62	8.58			1+00						
						1+27.0	# 184		2407			1-30-43
						1+60.7	# 187		2413			2-1-43
						1+91.1			Lulu			
2+0	96.5	88.72	7.78			2+22.0	# 188		2419			2-1-43
						2+58.1			Lulu			
						2+82.4						
3+0	96.5	88.82	7.68			4" sch 40 3+58.3+19 wye	# 45-66297 189		2425A			5-11-45 2-1-43
						3+40.6			Lulu			
				3+49.4		3+73.8	# 21549 2867		2431			9-22-48 10-14-42
4+0	96.7	88.92	7.78			4+10.5	# 2868		2437			10-14-42
						4+37.1			Lulu			
						4+71.6						
5+0	96.5	89.02	7.48			5+06.8	# 2869		2443			10-14-42
						5+37.1	# 2870		2449B			10-14-42
						5+67.5			Lulu			
						5+99.7						
6+0	97.0	89.12	7.88			6+31.8	# 2871		2455			10-14-42
				6+89.0		7+26.3	# 2944		2501			10-30-42
						7+59.4			Lulu			
						7+84.1						
8+0	96.4	89.32	7.08			8+23.1	# 2943		2507			10-30-42
						8+53.0	# 2942		2513			10-30-42
						8+87.1			Lulu			
9+0	96.7	89.42	7.28			9+20.4	# 2941		2519			10-30-42
						9+48.9			Lulu			
						9+79.9						
10+0	96.2	89.52	6.68			10+10.0	# 2940		2525			10-30-42
				10+176		10+48.0	# 2939		2531			10-30-42
						10+80.0			Lulu			
11+0	96.8	89.62	7.18			11+10.7	# 2938		2537			10-30-42
						11+45.0			Lulu			
						11+77.8						
12+0	95.7	89.72	5.98			12+11.5	# 2937		2543			10-30-42
						12+44.3	# 2936		2549			10-30-42
						12+78.0	# 99-00970		Lulu			10-21-79
13+0	95.5	89.82	5.68			13+08.6	# 2935		2555			10-30-42
				13+45.5		13+36.0			Lulu			

2003-0298a 11/13/03 - 2508 S Pattie - Roto Rooter - 4" sch 40 - 17 WINEO
 1997-01300 - 11/22/97 - 2444 S Pattie - Kansas Ditching - 4" sch 40, trap installed - 6' S of NPL + 10' E of EPL - not full repl

271748 Rec 443478 Spec fee \$100.00 2550 Pattie - 5-14-79 - Budlowe (Tap 12+50.8)
 Tap (13+42.5) Rec 419447 - Spec fee \$100.00 2556 Pattie - 7-11-78 - C. 76467 - V. N. II
 Rec 179105 - Spec fee \$100.00 - 2502 Pattie - 10-18-73 - (41862 - Tap 10/24/73)
 Rec 179106 - Spec fee \$100.00 - 1317-19 - 2504 Pattie - 10-18-73 - (41861 - Tap 10/24/73 - 4" sch 40)
 #4956 - Tap - 2401 Lulu - 4-24-53 - Lee Capton
 #183 - Tap - 2401 Lulu - 4-30-43 - Frederick Pkg. Co.
 #253 - Tap - 2444 Pattie - 3-30-50 - Carl M. Lee (\$20 Special Fee paid 3-30-50)
 #2871 - Tap - 2508 Pattie - 10-27-50 - Callison Pkg. (\$20 "See above" - 10-27-50)
 #3861 - Tap - 2546 Pattie - 2-8-51 - Callison Pkg. (\$20 " " - 2-8-51)
 #1863 - Tap - 2550 Pattie - 8-31-54 - S. & B. Pkg. (\$20 " " - 8-31-54)
 #6885 - Tap - 6" on 8" Y - 2416 Pattie - 8-25-53 - Art Prosser (\$20 - 2456 Pattie - 8-25-53)
 #3997 - 6" on 8" Y - 2416 Pattie - 2-3-53 - Art Prosser (\$20 " " - 2-3-53)
 #13852 - Tap - 2432 Pattie - 2-19-51 - Eugene Reynolds (\$20 " " - 2-19-51)
 #3943 - Tap - 2436 Pattie - 2-19-51 - Eugene Reynolds (\$20 Special Fee paid 2-19-51)
 #3954 - Tap - 2490 Pattie - 2-19-51 - Eugene Reynolds (\$20 " " - 2-19-51)
 #3949 - Tap - 2516 Pattie - 2-27-51 - Callison (\$20 Special Fee paid 2-27-51) (9+21)
 #3920 - Tap - 2520 Pattie - 2-27-51 - Callison (\$20 Special Fee paid 2-27-51)
 #4572 - Tap - 2530-32 Pattie - 5-7-51 - Hinshaw - (\$20 Special Fee paid 5-7-51)
 #4573 - Tap - 2536-38 Pattie - 5-7-51 - Hinshaw - (\$20 Special Fee paid 5-7-51)
 #4574 - Tap - 2540-42 Pattie - 5-7-51 - Hinshaw - (\$20 Special Fee paid 5-7-51)
 #6956 - Tap - 6" on 8" Y - 2455 Special Fee paid - 2458 Pattie - 11-25-50 - J.C. Severs
 (3+58) see next