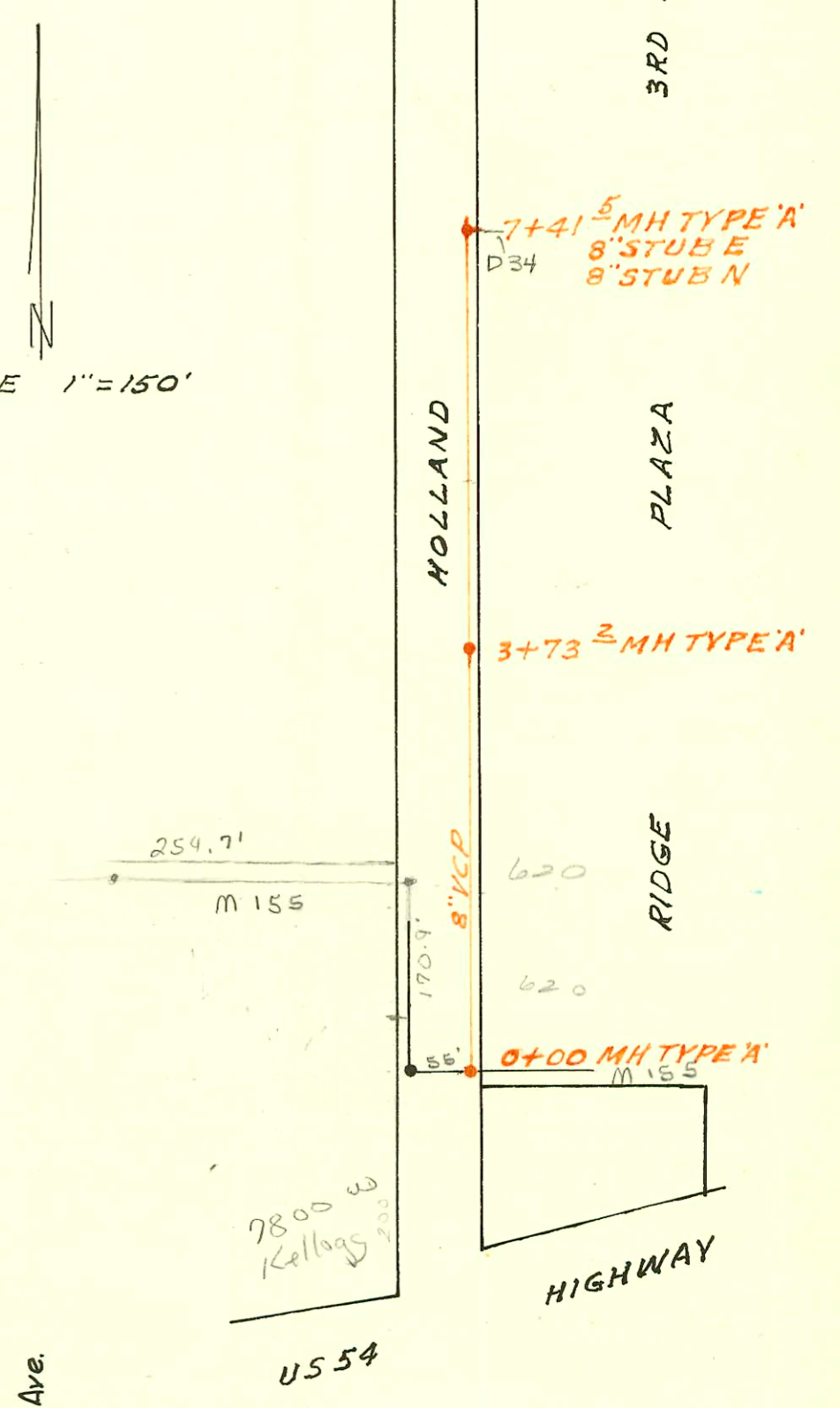


LATERAL 30 MAIN 4 SOUTHWEST INTERCEPTOR
 BUILT BY: UTILITY CONTR. INC.
 PROJ. NO 468-76-245-80651-000-000-001
 BOOKED 5-18-79 FROM AR 855

UNIVERSITY

D 245 A

SCALE 1"=150'



24th Ave.		St.	
1	2	1	2
3	4	3	4
5	6	5	6
7	8	7	8
9	10	9	10
11	12	11	12
13	14	13	14
15	16	15	16
17	18	17	18
19	20	19	20
21	22	21	22
23	24	23	24
25	26	25	26
27	28	27	28
29	30	29	30
31	32	31	32
33	34	33	34
35	36	35	36
37	38	37	38
39	40	39	40
41	42	41	42
43	44	43	44
45	46	45	46
47	48	47	48
23rd Ave.		St.	

LAT. V - DIST. T-S.S. #20
 W.B. CARTER - 1943

CONSTRUCTION RECORD						SERVICE RECORD						
STATION	ELEVATION		Depth	MANHOLE	4-INCH "Y" BRANCHES		No. of Permit		House Number		DATE OF PERMITS	
	Ground	Grade			North West	South East	North West	South East	North West	South East	North West	South East
0+0	123.50	116.40	7.1	0+0								
					0+29.2	0+26.2						
					0+56.5	0+53.5						
					0+81.3	0+78.3	#1818		2403	Shelton		11-5-43
1+0	123.80	116.50	7.3		1+05.3	1+02.3	#37988		820 W. 23" Lt.		3/29/73	
					1+33.0	1+30.0	#3128		2405	Shelton		11-6-52
					1+54.4	1+51.4	#37980		2417	Shelton		3-29-73
					1+82.0	1+79.0	#1419					6-27-50
2+0	124.10	116.60	7.5		2+06.9	2+03.9						
					2+34.0	2+31.0	#1420		2432	Mascot		7-7-54
					2+58.7	2+55.7	#362		2435	Shelton		6-5-46
					2+82.7	2+79.7	#3150		2436	Shelton		3-26-65
3+0	123.90	116.70	7.2		3+01.3	2+98.3	#1818		2439	Shelton		4-14-47
				3+04.7	3+29.0	3+26.0	#2961		2437	Shelton		12-21-71
					3+56.2	3+53.2	#7342		2440	Mascot		1-30-52
					3+80.1	3+77.1	#357		2441	Shelton		4-7-52
4+0	123.50	116.80	6.7		4+04.0	4+01.0			2442	Mascot		3-15-52
					4+31.2	4+28.2	#42526		2443	Shelton	5.0.	11-30-73
					4+53.0	4+50.0	#383		2446	Mascot		6-29-73
					4+79.8	4+76.8	#37998					
5+0	123.60	116.90	6.7		5+04.5	5+01.5	#71799		2448	Mascot		11-18-71
					5+31.5	5+28.5	#2484		2461	Shelton		9-11-52
					5+55.3	5+52.3	#5682					6-30-53
					5+79.1	5+76.1	#2392		2458	Mascot		4-4-49
6+0	123.60	117.00	6.6						2465	Shelton		9-22-89
	123.40	117.02	6.4	6+14.8								6-30-53

LATERAL 30 MAIN 4 SOUTHWEST INTERCEPTOR

0+00	136.8	127.00	9.8	0+00								
1+00	137.0	127.40	9.6									
2+00	137.2	127.80	9.4									
3+00	137.5	128.20	9.3									
	137.7	128.50	9.3	3+73.2								
4+00	137.8	128.60	9.2									
5+00	138.0	129.00	9.0									
6+00	138.3	129.40	8.9									
7+00	139.0	129.80	9.2									
	139.9	129.97	9.9	7+41.5	8" STUB N	8" STUB E						

C29428 - Seal off - 222 W. 23" Lt. - 12/13/71 - J.C. Jensen

2870 - Top - 2419 Shelton - 10-17-52 - Coleman Pkg.

5683 - Top - 2457 Shelton - 1-30-53 - Nidel & Hensley, Inc. - 8-5-3074

6285 Top - 2422 Mascot - 3-4-58 - J.C. Jensen (1+32)

4787 Seal off - 2419 Shelton - 9-11-67 - Geo. Driffin

50744 - 2421 Shelton top - Mike Jensen 8-8-75