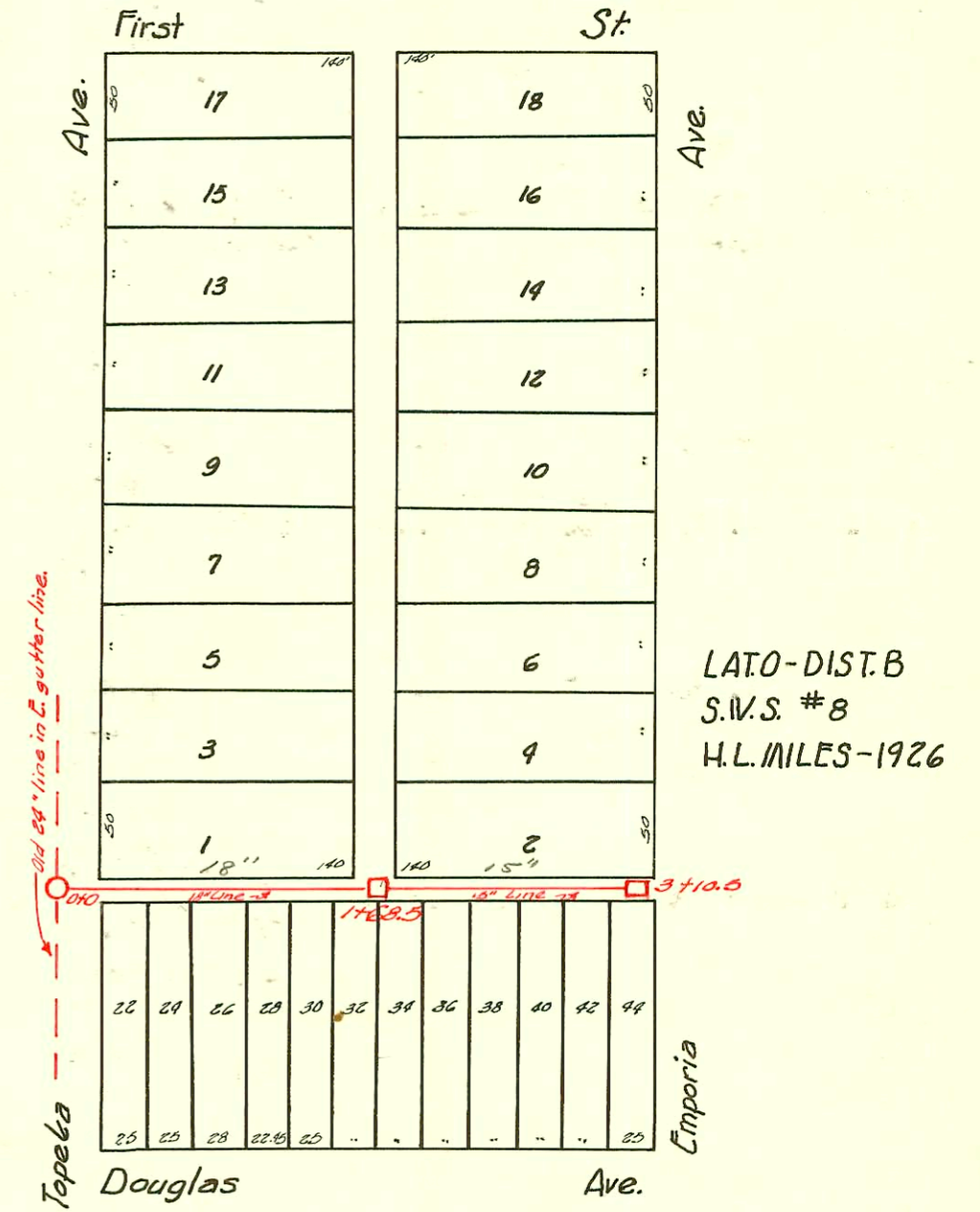
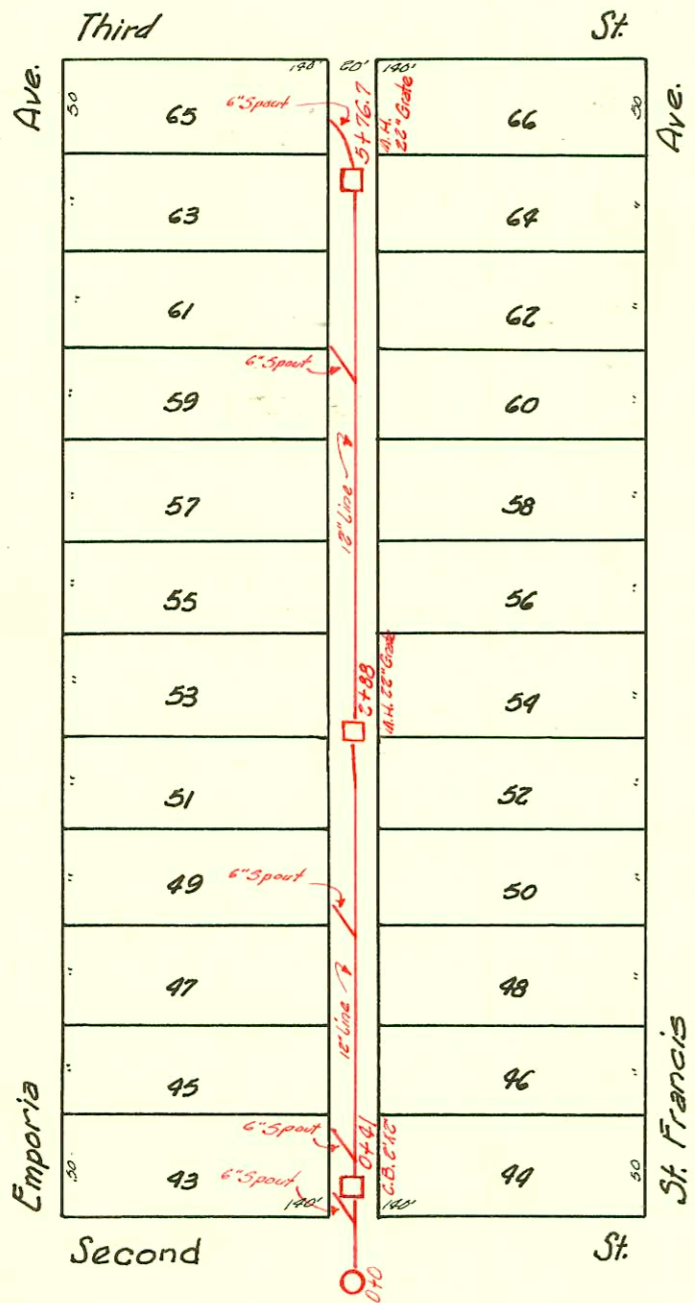
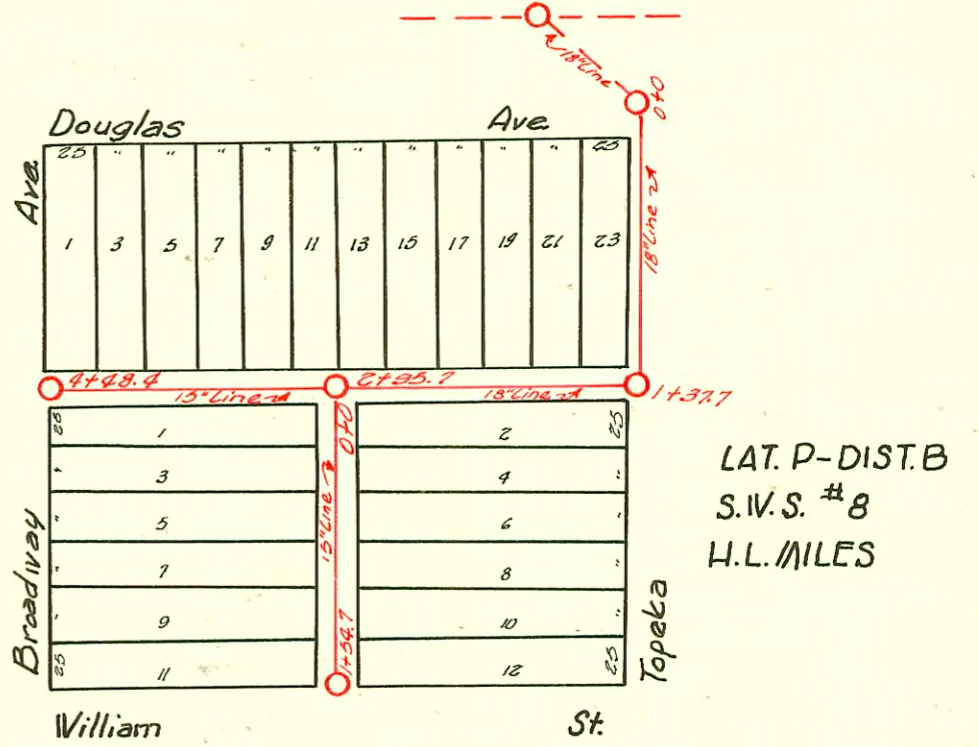
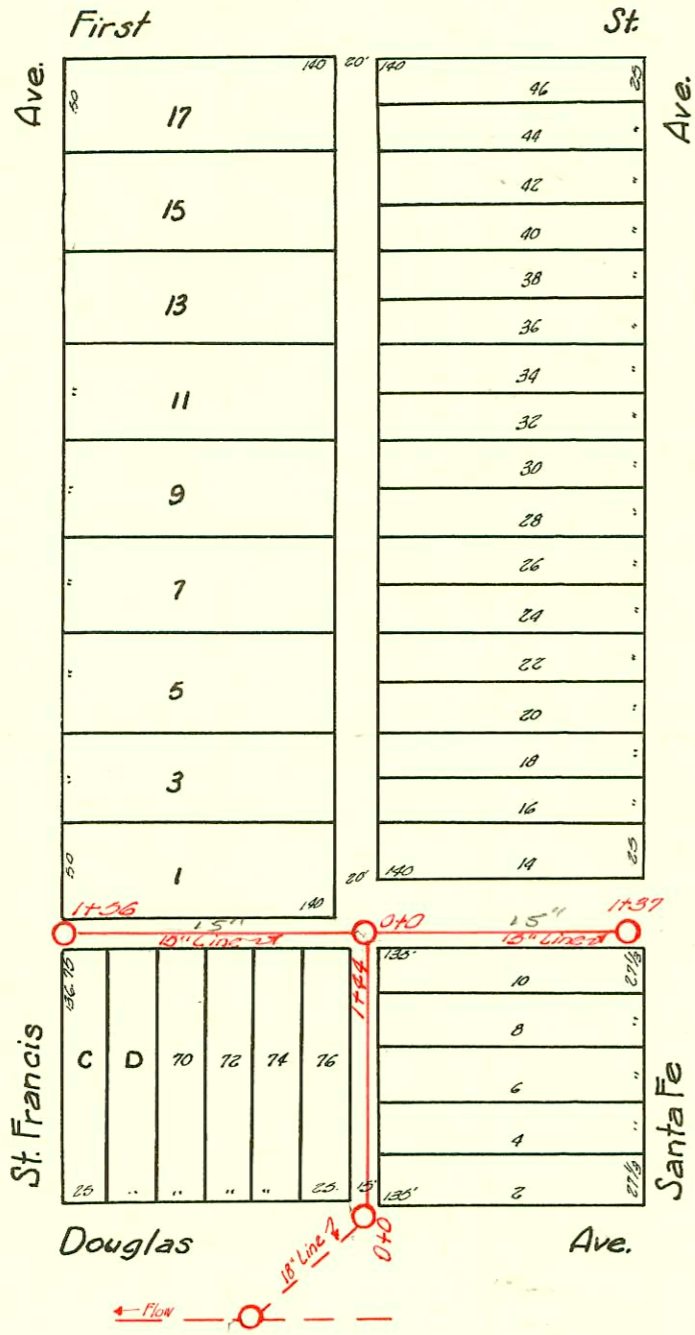


LAT. O-DIST. B
S.V.S. # 8
H.L. MILES - 1926



CONSTRUCTION RECORD

SERVICE RECORD

Lat. O, Dist. B,
S.W.S. No. 8
Line West from 0+0
at alley intersection

Line East from 0+0
at alley intersection

Line North from M.H.
at North Side of
Douglas.

Lat. P, Dist. B,
S.W.S. No. 8

Line along West side
of Topeka and in alley
S. of Douglas.

Lat. Q, Dist. B,
S.W.S. No. 8

Line in alley N. of
Douglas, Topeka to
Emporia.

S.W.S. No. 24
In alley E. of
Emporia from
2nd to 3rd.

STATION	ELEVATION		Depth	MANHOLE	4-INCH "Y" BRANCHES		No. of Permit		House Number		DATE OF PERMITS	
	Ground	Grade			North West	South East	North West	South East	North West	South East	North West	South East
0+0	111.58	106.30	5.28	M.H. of Alley 0+0 interx	0+38	0+12		Connected				
					+80	+61	connected	connected				
						+86		connected				
1+0	111.26	107.47	3.79			1+11		connected				
1+56	111.38	108.13	3.25	M.H. at C.C. 1+56 St. Francis		1+17		connected				
0+0	111.58	106.30	5.28	M.H. of Alley 0+0 inter X		0+04		Connected				
						+25.7		connected				
1+0	112.62	106.99	5.63		0+56	+54						
						+76.7						
1+43	112.70	107.30	5.40	M.H. at N.L. 1+37 S. 3rd		1+01						
0+0	112.33	106.00	6.33	M.H. at N.L. 0+0 Douglas								
1+0	112.30	106.20	6.10									
1+37	111.58	106.30	5.28	M.H. of Alley 1+44 inter X								
0+0	109.19	105.15	4.04	M.H. at S.W. 0+0 cor. Douglas	North	South						
					1+53.9			connected				
1+0	108.69	105.65	3.04	M.H. at alley S. of Douglas 1+37.7 W.S. Topeka		+75.8		connected				
+37.7	108.79	105.85	2.94			+01.9		connected				
2+0	108.84	105.91	2.93			+66.9		connected				
					at alley 2+95.7 interx	+91.5						
3+0	109.30	106.01	3.29		3+52.4			#			10-12-38	
					+49.9	3+75.9						
4+0	109.67	106.11	3.56		4+13.5	4+18.3						
4+48.4	109.69	106.16	3.53	M.H. at alley S. of Douglas 4+48.4 Lawrence	West	East						
					0+10			connected				
0+0	109.30	106.02	3.28	M.H. at alley 0+0 inter X		+53.5	+56	connected	connected			
1+0	109.11	106.12	2.99			+7.9	+76.5	connected	connected			
+54.7	108.65	106.18	2.47	1+54.7	1+31.2	1+33.6		connected	connected			
0+0	111.30	108.40	2.90	M.H. in E. gutter 0+0 Line of Topeka	North	South						
					0+23.5	0+21						
					+48.8	+36.6						
					+61.6	+66.7						
					+71.5	+89.7						
					+92	1+10						
1+0	111.64	108.50	3.14		1+12.5			#		406-408 E. Douglas		1-24-27
					+20	+63						
1+68.5	111.85	108.57 OUT 108.70 IN	3.15	ctr. of grate C.B. at 1+68.5 interx		+33						
						+40.5						
						+53						
						+77	+89.6					
2+0	112.09	108.73	3.36			+92.7		#		422 E. Douglas		8-6-29
						2+12.3	2+12.3					
3+0	112.63	108.83	3.80			+17.3	+38.1	#		422 E. Douglas		5-6-27
						+43.3	+63.3					
						+65.8	+86.1					
3+10.5	112.65	108.85	3.80	ctr. of grate C.B. at N.S. Emporia		+88.8						
0+0				M.H. in 0+0 End	East	West						
					0+41 C.B. 2'x2'	0+37						
						0+64						
1+0						1+80.7						
2+0				M.H. 22" 2+88 Grate								
3+0												
4+0						4+80.7						
5+0												
5+76.7						5+76.7						

823 S.W.S. 321 E. Douglas - 9-28-26
 # 346 Tap - Palace Theatre - 6-12-31 Johnson Plog
 # 55 Tap - 121 S. Topeka - 6-18-34 - Bradia
 # 311 Tap - 428 E. Douglas - 12-18-35 - C.C. McLaughlin
 # 7 Tap - 115 S. Topeka - 1-28-36 - Johnson
 # 1004 Tap - 309 E. Douglas - 2-20-38 - M.W. Bray
 # 1538 Tap - 300 N. Emporia - 5-9-39 - E.B. Brinnen