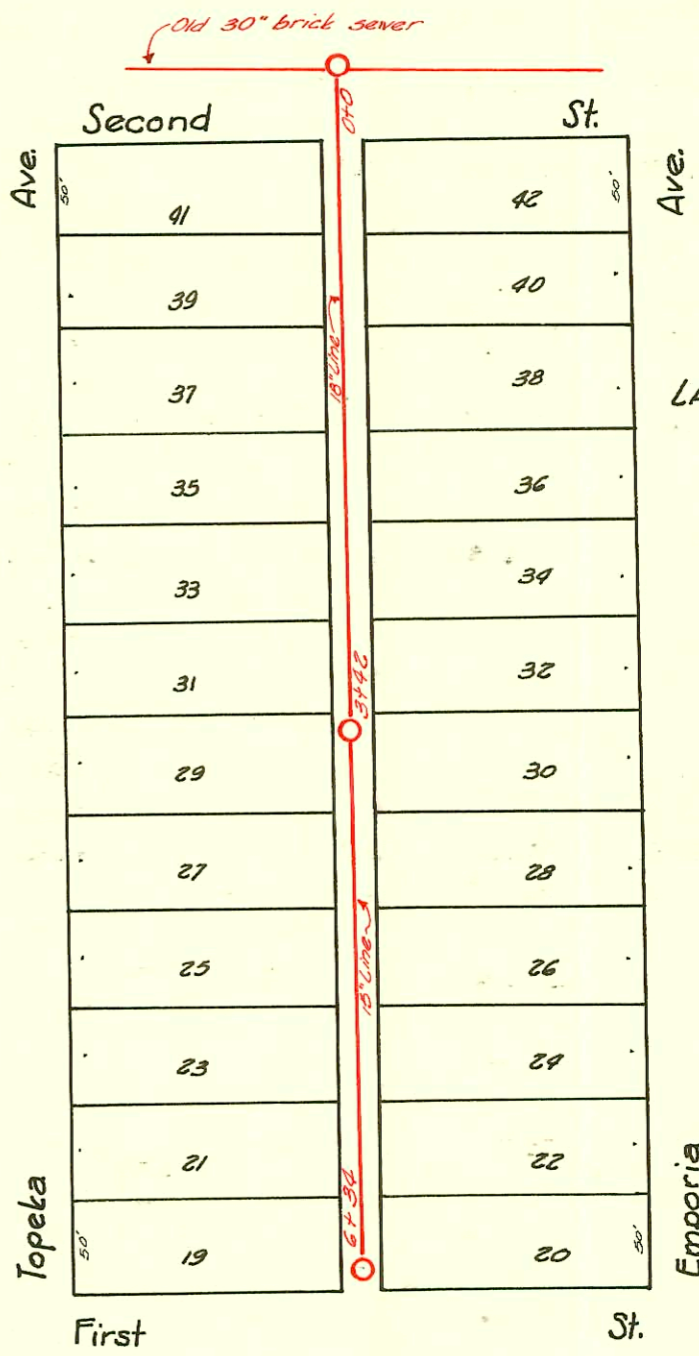
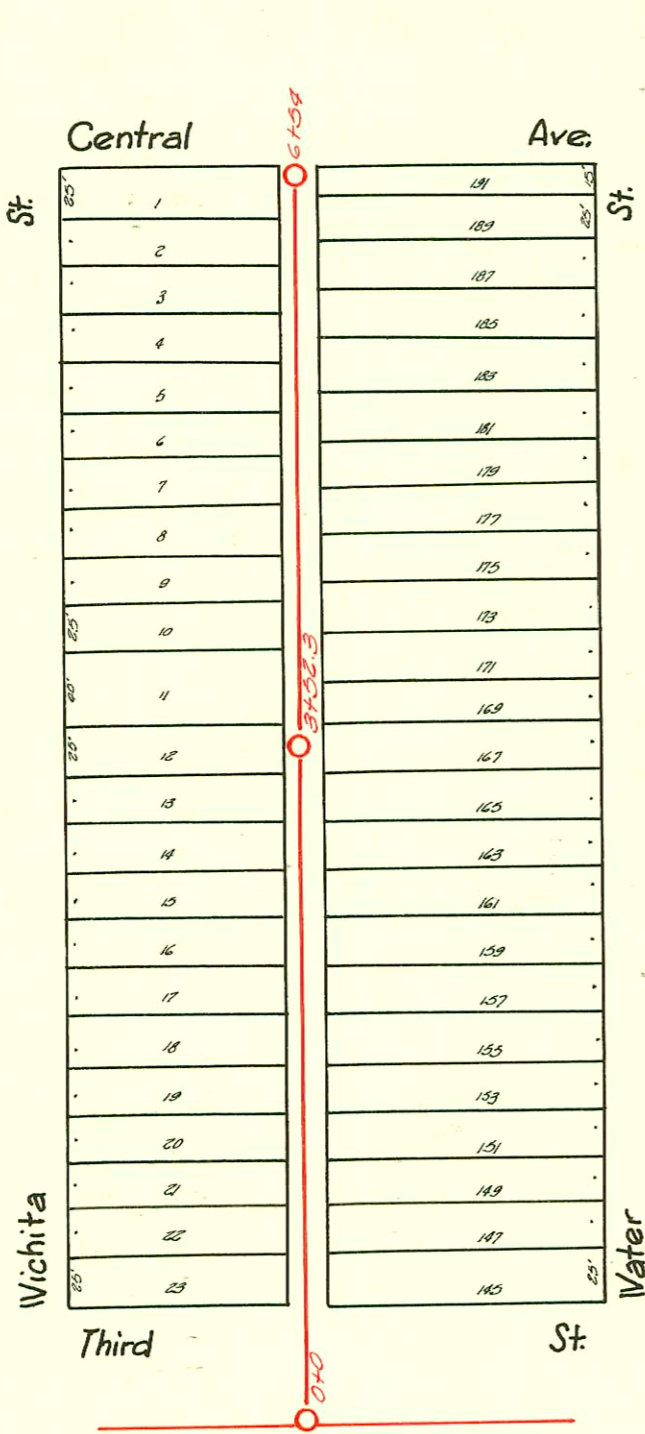
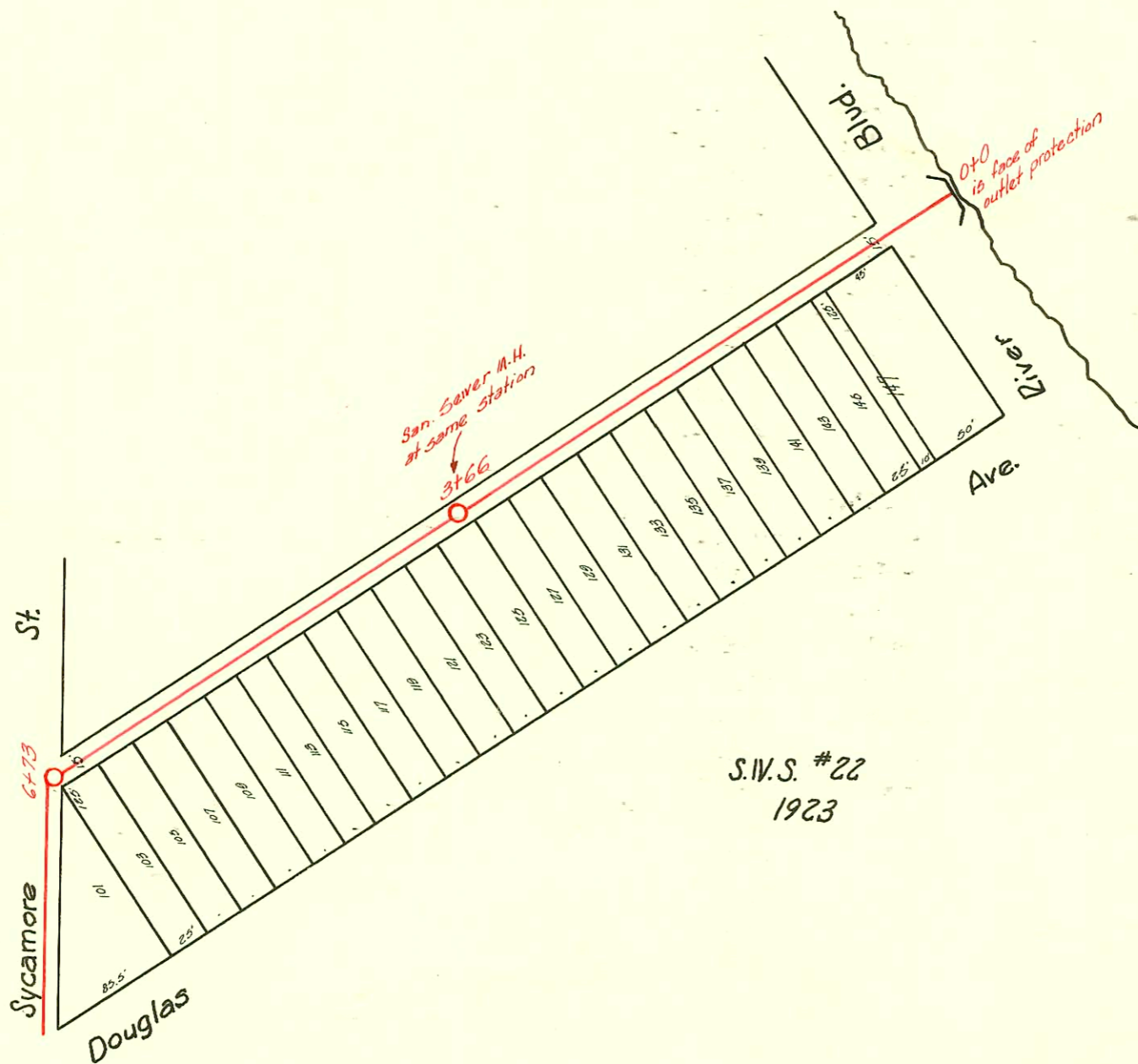


S.W.S. #24
1923



LAT. 1-S.W.S. #24
1924



D-247

CONSTRUCTION RECORD							SERVICE RECORD					
STATION	ELEVATION		Depth	MANHOLE	4-INCH "Y" BRANCHES		No. of Permit		House Number		DATE OF PERMITS	
	Ground	Grade			North West	South East	North West	South East	North West	South East	North West	South East
0+0	111.00	104.92	6.08	0+0	0+64	0+66.5						
					1+56	1+67						
1+0	111.71	105.16	6.55		+87	+84.5	# 1417		415 N. Water		9-25-23	
						2+29	# 1534		417 N. Water		7-2-24	
					2+43.5							
					2+51							
2+0	111.58	105.41	6.17		+86	+88.5						
					3+18	3+20.5						
3+0	112.54	105.66	6.88	3+52.3	+37	+39.5						
					+64.5	+67						
					+90	+92.5	# 231		458 N. Wichita		3-23-26	
4+0	113.76	105.90	7.86		4+15.2	4+17.7	# 104		442 N. Wichita		6-21-27	
					+40	+42.5						
					+66	+68.5						
					+90.8	+93.3						
5+0	113.23	106.20	7.03		5+16	5+18.5						
					+41	+43.5						
					+67	+69.5						
6+0	112.47	106.50	5.97		+92	+94.5	# 1321		454 N. Wichita		12-10-25	
4+54	112.33	106.65	5.68	6+54	6+19	6+26.5	# 1320		454 N. Wichita		12-10-25	
0+0		101.55		0+0	Face of outlet protection	South Ys Only						
						1+61						
						+86						
1+0		101.65				2+15		# 324	516 W. Douglas		4-2-25	
						+50		# 2118	522 W. Doug.		9-16-24	
2+0		101.75			5.5 M.H. at 3+66 same station	3+06.5		# 1179	522 W. Doug.		5-22-24	
						+51.5		# 323	Douglas		4-2-25	
3+0		101.85				+79		# 841	536 W. Douglas		3-9-28	
						4+28		connected	Garage		at time sewer was built	
4+0		101.95				5+0		"	"		"	
						+72		"	10" drain CB on Douglas		"	
5+0		102.05				+96		"	"		"	
6+0		102.15				6+26						
6+73		102.30		6+73	Line turns South	+53						
0+0	111.80	107.28	4.52	0+0	0+45.8	0+43.4						
					+71.6	+68.8						
					+94.5	+97						
1+0	112.63	107.38	5.25		1+20.5	1+33.3	# 150		419 E. 2nd		3-12-31	
					+53.7	+91.5						
					+94.5	2+29.6						
2+0	112.72	107.48	5.24		2+34.7	+55						
					+73	+83.4						
3+0	112.23	107.58	4.65		3+21.4	3+23.8						
3+42	111.96	107.63 OUT	4.33	3+42	+34.3	+36.6						
		107.85 IN	4.16		+65	+67.5						
					+90.7	+92.7						
4+0	111.75	107.85	3.90		4+18.5	4+20.6	# 711		227 N. Topeka		2-26-33	
					+44.5	+41.7						
					+67.4	+69.9						
					+91.7	+94.2						
5+0	111.26	107.95	3.31		5+10	5+21						
					+43.5	+27.8						
					+68.3	+38.4						
					+93.5	+40.9						
6+0	110.83	108.05	2.78		6+18.3	6+5.8	# 642		404 E. 1st		12-17-37	
					+31.3	4.91						
						6+15.7						
6+34	110.75	108.09	2.66	6+34		428.7						

#581-Tap-520 N. Douglas-6-11-29-J. C. Lansdowne
 #682-Tap-520 W. Douglas-6-11-29-J. C. Lansdowne
 #1045-Tap-546 W. Douglas-12-3-30-J. C. Lansdowne
 #119-Tap-419 E. Second-5-12-31-J. M. Connaughton
 #77-Tap-230 W. Douglas-6-21-33-B. E. & J. C. Miller
 #99-Tap-164 Sycamore-9-16-33-Creed Plummer-Skinnell
 #443-Tap-236-556 W. Douglas-9-7-37-Bradie
 #787-Tap-215 W. Central-7-2-43-Frederick Pkg. Co.
 #788-Tap-215 W. Central-7-2-43-Frederick Pkg. Co.
 #2276-Tap-428 N. Wichita-11-23-45-Simmons
 #1168-Tap-435 N. Water-8-11-49-Co Foy Pkg. Co.
 #1619-223 N. Emporia-7-20-50-Fray