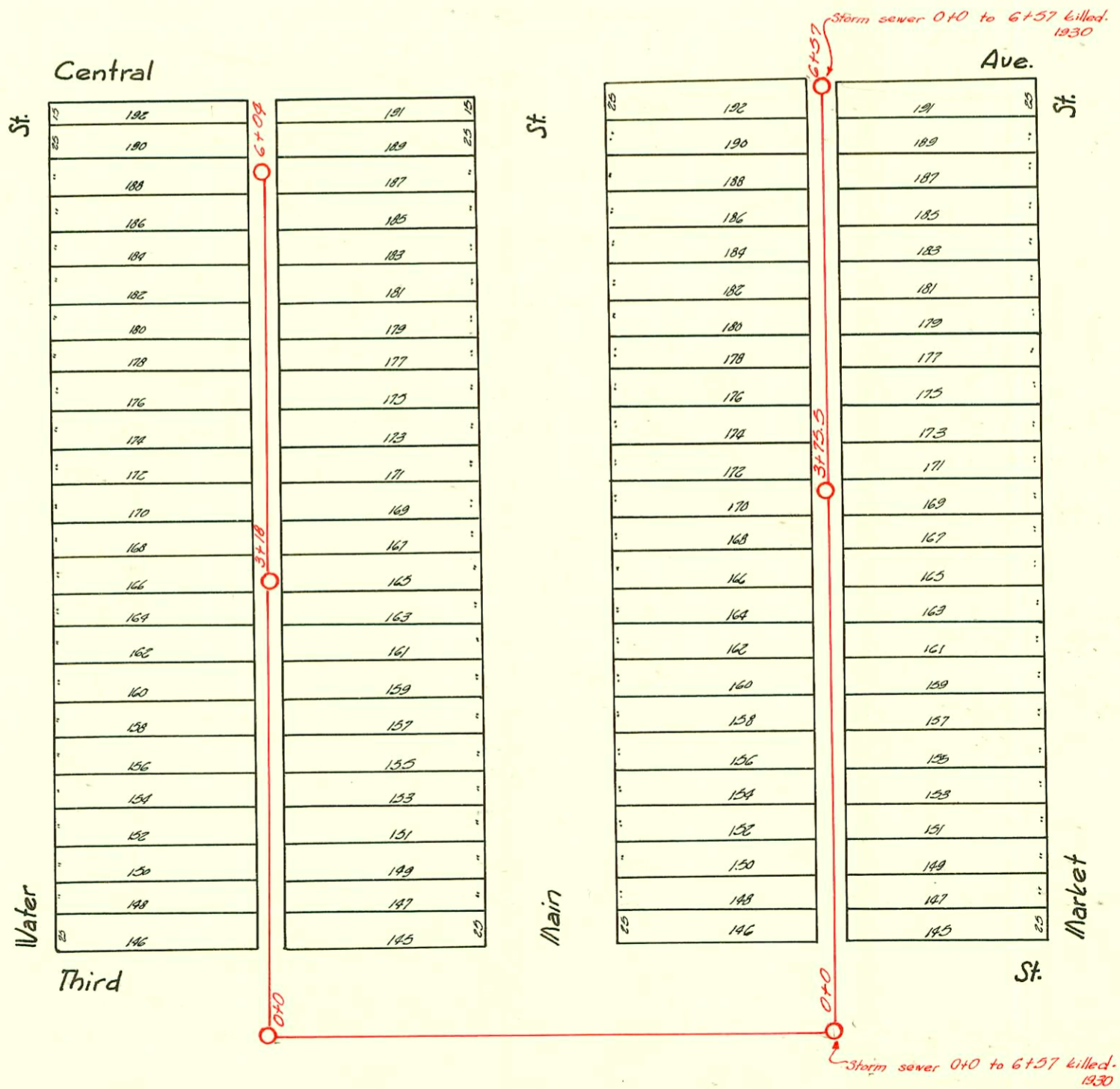
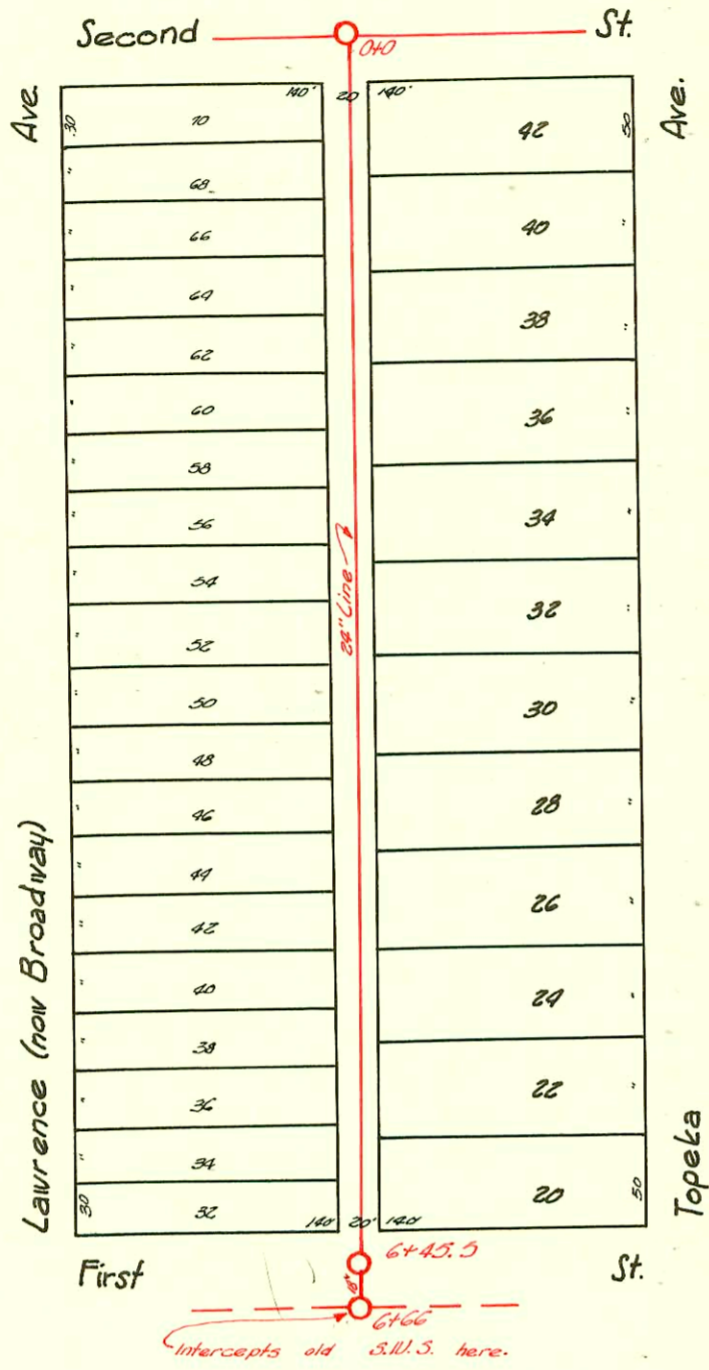


S.W.S. #24-1923



D248

CONSTRUCTION RECORD

SERVICE RECORD

STATION	ELEVATION		Depth	MANHOLE	4-INCH "Y" BRANCHES		No. of Permit		House Number		DATE OF PERMITS	
	Ground	Grade			North West	South East	North West	South East	North West	South East	North West	South East
0+0	111.43	104.50	6.93	0+0	0+36.8	0+44.1		# 510		257 N. Topoka		5-7-29
1+0	111.30	104.60	6.70		+80	+71.5		# 54		230 N. Lawrence		8-11-15
2+0	111.24	104.70	6.54		+37.8	+40.3		# 1338		242 N. Lawrence		9-10-23
3+0	111.03	104.80	6.23		+63.5	+66						
4+0	110.79	104.90	5.89		+87.5	+90						
5+0	110.51	105.0	5.51		2+13.5	2+16						
6+0	110.52	105.10	5.42		+42	+44.5		# 954		Masonic Temple		6-28-23
6+45.5	110.35	105.13	5.22	6+45.5	+68	+70.5		# 965	# 953	Orpheum Bldg.	Orpheum Bldg.	6-30-23
0+0		104.07		0+0	+92.5	+95		# 966		Orpheum Bldg.		6-30-23
+50		104.57			3+15.5	3+18		# 967		Orpheum Bldg.		6-30-23
1+0		105.07			+50	+52						
2+0		105.32			+76.5	+79						
3+0		105.52			4+11.5	4+14						
4+0		105.80			+37.8							
5+0		105.68			+74.3	+79.3						
6+0		106.04	6.65		5+25.5	5+50.8						
6+57		106.42	6.11	6+57	+83.6							
0+0		104.87		0+0	6+19.3							
0+49	111.95	104.99	6.96		0+74.5	0+72						
0+80	112.6	105.09	7.51		1+00.5	+98						
1+38	113.04	105.21	7.83		+26.5	+24						
2+38	113.01	105.26	7.55		+52.3	+49.8						
2+88	113.23	105.59	7.64		+78.7	+76.2						
3+18 OUT	113.13	105.63	7.50	3+18	2+06.5	2+00						
3+18 IN	113.13	105.87	7.66		+29.2	+26.7						
+38	112.76	105.94	6.82		+54.5	+52						
+88	112.47	106.06	6.41		+81.5	+79						
4+38	112.59	106.18	6.41		3+05.5	3+03						
+88	112.80	106.30	6.50		+33	+30.5						
5+38	112.81	106.42	6.39		+58	+55.5						
+88	112.97	106.54	6.43		+84	+81.5						
6+04	112.82	106.64	6.18	6+04	4+13.3	4+10.8						
					+36	+33.5		# 1897		427 N. Market		3-30-48
					+61.5	+59						
					+84	+81.5						
					5+09.5	5+07						
					+35	+32.5						
					+60	+57.5						
					+85.5	+83						
					6+11.8	6+09.3						
					+36	+33.5						
					0+32	0+34.5						
					+84	+86.5						
					1+10	1+12.5						
					+35	+37.5						
					+61	+63.5						
					+87	+89.5						
					2+12	2+14.5						
					+38	+40.5						
					+64	+66.5						
					+90	+92.5						
					3+21	3+23.5						
					+48	+50.5						
					+76	+78.5						
					+98	4+00.5						
					4+23.5	+26						
					+48	+50.5						
					+74	+76.5						
					+99.5	5+02						
					5+25	+27.5						
					+50	+52.5						
					+75	+77.5						
					+93	+95.5						

South of Second St. Between Lawrence & Topoka.

North of Third St. Between Main & Market.

North of Third between Main & Water.

#474-#475-Taps-244 N. Lawrence-Simmons-4-5-28  
 #167-Top-247 N. Topoka-4-7-31-W.A. Githrich  
 #295-#296-Taps-Post Office-5-21-31-Simmons Pkg. Co.  
 #1985-Top-201 N. Topoka-4-5-25-C.A. Baker  
 #1616-Top-201 N. Topoka-3-17-47-Simmons Pkg. Co.  
 #1899-#1900-#1901-#1902-427 N. Market-3-30-48-Epistro Pkg. Co.-Central Christian Church  
 #165-Western Litho.-3-8-26