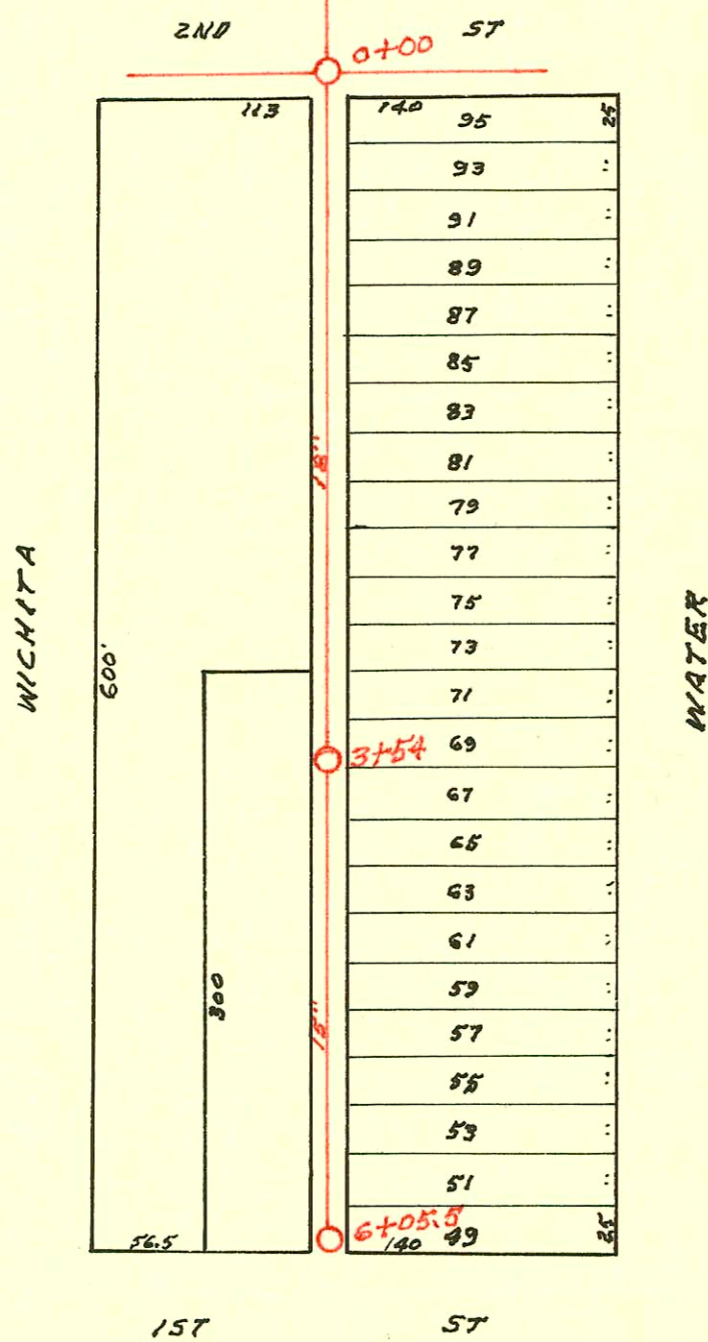
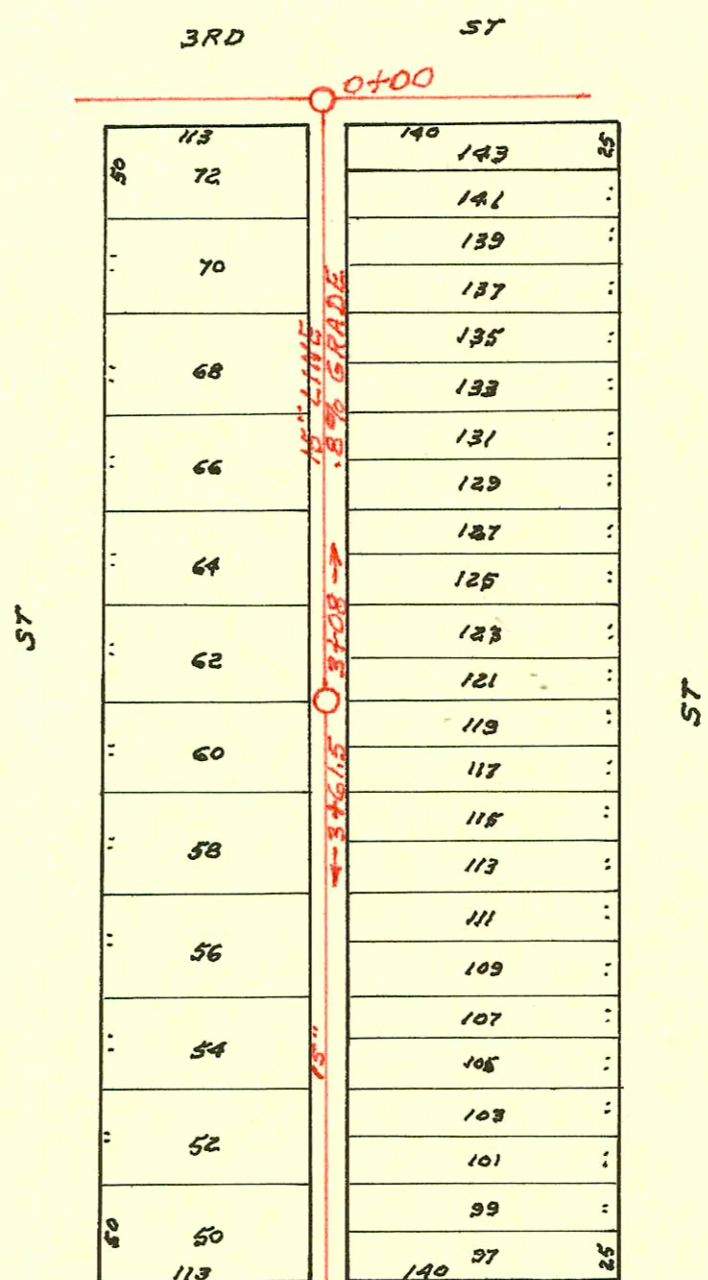


SWS #24-1923



D-251

CONSTRUCTION RECORD

SERVICE RECORD

North from M.H. 0+0  
in Second Street

South from M.H.  
0+0 in Third St.

South from M.H.  
0+0 in Second  
Street.

STATION	ELEVATION		Depth	MANHOLE	4-INCH "Y" BRANCHES		No. of Permit		House Number		DATE OF PERMITS	
	Ground	Grade			North West	South East	North West	South East	North West	South East	North West	South East
0+0	112.96	107.50	5.46	0+0 <sup>at 3.5' of Second</sup>	1+03	1+03.5	# 1122		218 W End		10-15-25	
					+28.3	+30.8						
1+0	113.44	107.60	5.84		+54.7	+57.2						
					+82	+84.5						
2+0	112.65	107.70	4.95		2+07.5	2+10						
					+34	+36.5						
					+58	+60.5						
3+0	112.45	107.81	4.64		+84.3	+86.8						
3+61.5	113.05	107.86	5.19	3+61.5	3+07	3+12	# 1581		313 N. Water		10-26-23	
					+58		# 1582		318 N. Water		10-26-23	
0+0		105.42		0+0	0+16.5	0+19						
					+41.5	+39						
					+67	+64.5						
					+92.5	+90						
1+0	111.39	106.21	5.18		1+18.3	1+15.8						
					+44.2	+41.7						
					+69.5	+67						
					+95.5	+93						
2+0	111.41	107.01	4.40		2+19.5	2+17	# 1583		324 N. Wichita		10-26-23	
					+45	+42.5						
3+0	112.06	107.76	4.30		+71.5	+69						
3+08	113.05	107.86	5.19	3+08	+96.5	+94						
0+0		107.40		0+0 <sup>18" Pipe</sup>	0+29	0+33						
0+62	113.57	107.52	6.05		+57	+59.5						
1+59	113.79	107.72	6.07		+88	+90.5						
					1+09	1+11.5						
					+33.2	+35.7						
					+56	+58.5						
					+82	+85.5	# 897		341 Water		6-14-23	
2+55	114.75	107.90	6.85		2+08.5	2+11	# 788		236 Water		5-25-23	
					+33	+35.5						
					+56.5	+59						
					+84.5	+87						
3+54 OUT	114.15	108.10	6.05	3+54	3+02	3+04.5						
3+54 IN	114.15	108.34	5.81	(15" Pipe)	+30.5	+33						
						+50	# 36		217 Water		3-8-25	
3+80		108.39			+88.5	+91	# 37		217 Water		3-8-25	
4+30		108.49			4+29	4+31.5	# 38		217 Water		3-8-25	
4+95		108.62			+72.5	+70						
					+97	+94.5						
					5+22.5	5+20						
6+20		108.87			+53	+50.5	# 1744		207 Water		11-26-23	
	114.55	109.55	5.00	6+05.5	+96	+98.5						

#178-#179-Taps-218 W. Second-5-29-36-Moore-Robertson Pibg. Co.  
 #1150-Tap-218 W. Second-10-17-39-Moore-Robertson Pibg. Co.  
 #1331-Tap-218 W. Second-2-1-39-Moore-Robertson Pibg. Co.  
 #2219-Tap-218 W. Second-10-23-51-Utility Contractors, Inc.  
 #2533-Tap-307 N. Water-11-21-49-Pray Bros.  
 #449-#450-Taps-217 N. Water-10-17-01-Simmons Pibg. Co.  
 #2729-Tap-215 N. Water-2-25-46-Davidson Pibg. Co.  
 #2741-#2742-Taps-215 N. Water-2-27-46-Davidson Pibg. Co.  
 #2625-Tap-307 N. Water-11-30-49-Pray Pibg. Co.

#11559 2" from logs - 207 N. Water - Anderson-Miller - 9-22-59  
 seal off (4+86.5)  
 #11560 2" from logs - 307 N. Water - Anderson-Miller - 9-22-59  
 seal off (4+95.5)