

D252 A

NO PERMITS TO THIS LINE!

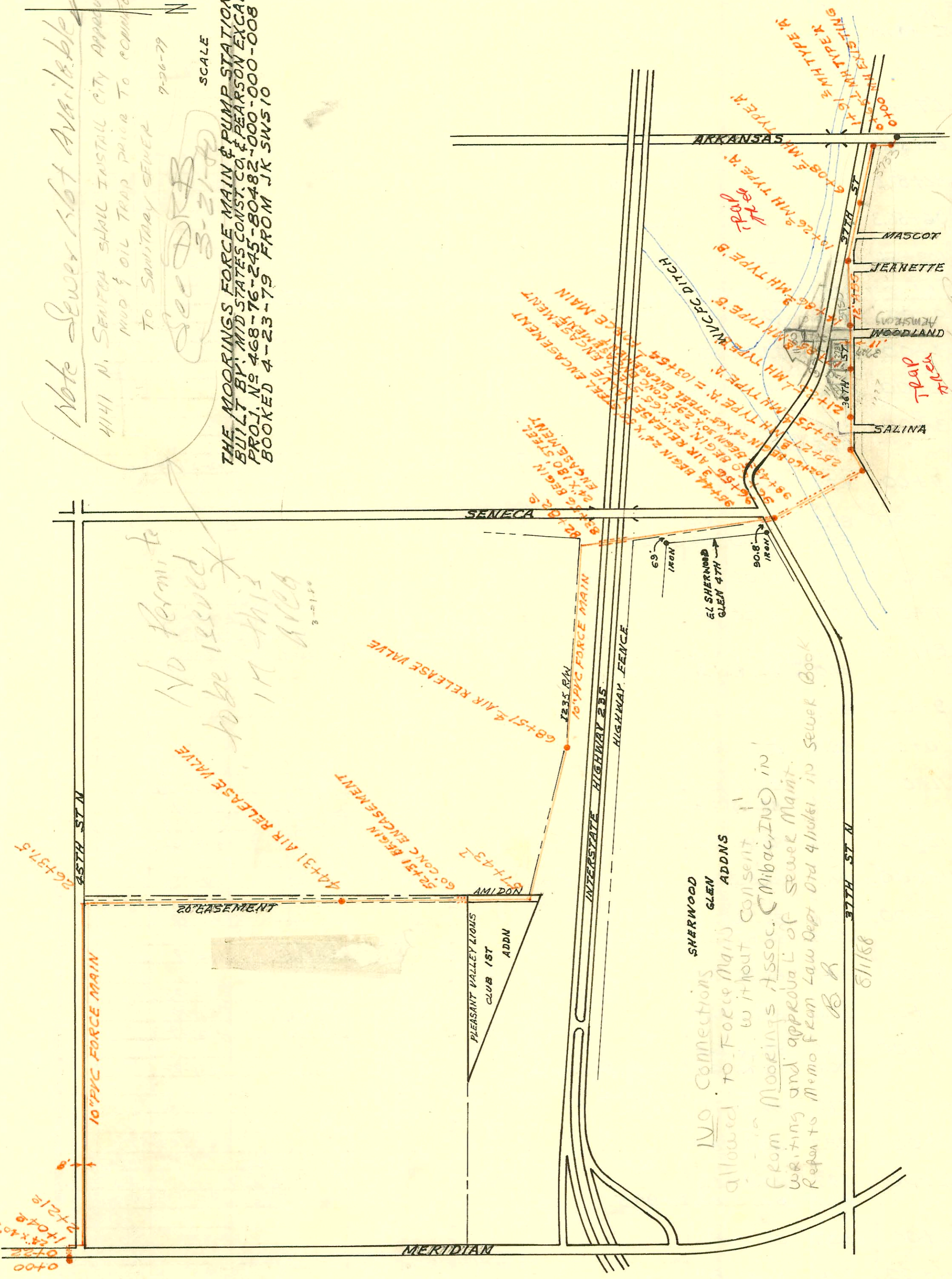
Note Sewer Plot Available

4141 N. SENECA SHALL INSTALL CITY APPROVED
MUD & OIL TRAP PRIOR TO CONNECTING
TO SANITARY SEWER 7-26-79

See DBB
3-21-79

SCALE 1" = 600'

THE MOORINGS FORCE MAIN & PUMP STATION
BUILT BY MID STATES CONST CO & PEARSON EXCAV CO.
PROJ. NO 468-76-245-80482-000-000-008
BOOKED 4-23-79 FROM JK SWS 10



No Permits
to be issued
in this
area

No Connections
allowed to Force Main
without consent
from Moorings Assoc. (Moorings) in
writing and approval of Sewer Maint.
Refer to Memo from Law Dept Dtd 4/10/61 in Sewer Book
B R

No Permits
for connection in
36th. DBB

0+00
0+22
1+04.8
2+21.6
2+43.2
2+64.8
2+86.4
3+08.0
3+29.6
3+51.2
3+72.8
3+94.4
4+16.0
4+37.6
4+59.2
4+80.8
5+02.4
5+24.0
5+45.6
5+67.2
5+88.8
6+10.4
6+32.0
6+53.6
6+75.2
6+96.8
7+18.4
7+40.0
7+61.6
7+83.2
8+04.8
8+26.4
8+48.0
8+69.6
8+91.2
9+12.8
9+34.4
9+56.0
9+77.6
9+99.2
10+20.8
10+42.4
10+64.0
10+85.6
11+07.2
11+28.8
11+50.4
11+72.0
11+93.6
12+15.2
12+36.8
12+58.4
12+80.0
13+01.6
13+23.2
13+44.8
13+66.4
13+88.0
14+09.6
14+31.2
14+52.8
14+74.4
14+96.0
15+17.6
15+39.2
15+60.8
15+82.4
16+04.0
16+25.6
16+47.2
16+68.8
16+90.4
17+12.0
17+33.6
17+55.2
17+76.8
17+98.4
18+20.0
18+41.6
18+63.2
18+84.8
19+06.4
19+28.0
19+49.6
19+71.2
19+92.8
20+14.4
20+36.0
20+57.6
20+79.2
21+00.8
21+22.4
21+44.0
21+65.6
21+87.2
22+08.8
22+30.4
22+52.0
22+73.6
22+95.2
23+16.8
23+38.4
23+60.0
23+81.6
24+03.2
24+24.8
24+46.4
24+68.0
24+89.6
25+11.2
25+32.8
25+54.4
25+76.0
25+97.6
26+19.2
26+40.8
26+62.4
26+84.0
27+05.6
27+27.2
27+48.8
27+70.4
27+92.0
28+13.6
28+35.2
28+56.8
28+78.4
29+00.0
29+21.6
29+43.2
29+64.8
29+86.4
30+08.0
30+29.6
30+51.2
30+72.8
30+94.4
31+16.0
31+37.6
31+59.2
31+80.8
32+02.4
32+24.0
32+45.6
32+67.2
32+88.8
33+10.4
33+32.0
33+53.6
33+75.2
33+96.8
34+18.4
34+39.2
34+60.0
34+81.6
35+03.2
35+24.8
35+46.4
35+68.0
35+89.6
36+11.2
36+32.8
36+54.4
36+76.0
36+97.6
37+19.2
37+40.8
37+62.4
37+84.0
38+05.6
38+27.2
38+48.8
38+70.4
38+92.0
39+13.6
39+35.2
39+56.8
39+78.4
39+99.2
40+20.8
40+42.4
40+64.0
40+85.6
41+07.2
41+28.8
41+50.4
41+72.0
41+93.6
42+15.2
42+36.8
42+58.4
42+80.0
43+01.6
43+23.2
43+44.8
43+66.4
43+88.0
44+09.6
44+31.2
44+52.8
44+74.4
44+96.0
45+17.6
45+39.2
45+60.8
45+82.4
46+04.0
46+25.6
46+47.2
46+68.8
46+90.4
47+12.0
47+33.6
47+55.2
47+76.8
47+98.4
48+20.0
48+41.6
48+63.2
48+84.8
49+06.4
49+28.0
49+49.6
49+71.2
49+92.8
50+14.4
50+36.0
50+57.6
50+79.2
51+00.8
51+22.4
51+44.0
51+65.6
51+87.2
52+08.8
52+30.4
52+52.0
52+73.6
52+95.2
53+16.8
53+38.4
53+60.0
53+81.6
54+03.2
54+24.8
54+46.4
54+68.0
54+89.6
55+11.2
55+32.8
55+54.4
55+76.0
55+97.6
56+19.2
56+40.8
56+62.4
56+84.0
57+05.6
57+27.2
57+48.8
57+70.4
57+92.0
58+13.6
58+35.2
58+56.8
58+78.4
58+99.2
59+20.8
59+42.4
59+64.0
59+85.6
60+07.2
60+28.8
60+50.4
60+72.0
60+93.6
61+15.2
61+36.8
61+58.4
61+80.0
62+01.6
62+23.2
62+44.8
62+66.4
62+88.0
63+09.6
63+31.2
63+52.8
63+74.4
63+96.0
64+17.6
64+39.2
64+60.8
64+82.4
65+04.0
65+25.6
65+47.2
65+68.8
65+90.4
66+12.0
66+33.6
66+55.2
66+76.8
66+98.4
67+20.0
67+41.6
67+63.2
67+84.8
68+06.4
68+28.0
68+49.6
68+71.2
68+92.8
69+14.4
69+36.0
69+57.6
69+79.2
70+00.8
70+22.4
70+44.0
70+65.6
70+87.2
71+08.8
71+30.4
71+52.0
71+73.6
71+95.2
72+16.8
72+38.4
72+60.0
72+81.6
73+03.2
73+24.8
73+46.4
73+68.0
73+89.6
74+11.2
74+32.8
74+54.4
74+76.0
74+97.6
75+19.2
75+40.8
75+62.4
75+84.0
76+05.6
76+27.2
76+48.8
76+70.4
76+92.0
77+13.6
77+35.2
77+56.8
77+78.4
77+99.2
78+20.8
78+42.4
78+64.0
78+85.6
79+07.2
79+28.8
79+50.4
79+72.0
79+93.6
80+15.2
80+36.8
80+58.4
80+80.0
81+01.6
81+23.2
81+44.8
81+66.4
81+88.0
82+09.6
82+31.2
82+52.8
82+74.4
82+96.0
83+17.6
83+39.2
83+60.8
83+82.4
84+04.0
84+25.6
84+47.2
84+68.8
84+90.4
85+12.0
85+33.6
85+55.2
85+76.8
85+98.4
86+20.0
86+41.6
86+63.2
86+84.8
87+06.4
87+28.0
87+49.6
87+71.2
87+92.8
88+14.4
88+36.0
88+57.6
88+79.2
89+00.8
89+22.4
89+44.0
89+65.6
89+87.2
90+08.8
90+30.4
90+52.0
90+73.6
90+95.2
91+16.8
91+38.4
91+60.0
91+81.6
92+03.2
92+24.8
92+46.4
92+68.0
92+89.6
93+11.2
93+32.8
93+54.4
93+76.0
93+97.6
94+19.2
94+40.8
94+62.4
94+84.0
95+05.6
95+27.2
95+48.8
95+70.4
95+92.0
96+13.6
96+35.2
96+56.8
96+78.4
96+99.2
97+20.8
97+42.4
97+64.0
97+85.6
98+07.2
98+28.8
98+50.4
98+72.0
98+93.6
99+15.2
99+36.8
99+58.4
99+80.0
100+01.6
100+23.2
100+44.8
100+66.4
100+88.0
101+09.6
101+31.2
101+52.8
101+74.4
101+96.0
102+17.6
102+39.2
102+60.8
102+82.4
103+04.0
103+25.6
103+47.2
103+68.8
103+90.4
104+12.0
104+33.6
104+55.2
104+76.8
104+98.4
105+20.0
105+41.6
105+63.2
105+84.8
106+06.4
106+28.0
106+49.6
106+71.2
106+92.8
107+14.4
107+36.0
107+57.6
107+79.2
108+00.8
108+22.4
108+44.0
108+65.6
108+87.2
109+08.8
109+30.4
109+52.0
109+73.6
109+95.2
110+16.8
110+38.4
110+60.0
110+81.6
111+03.2
111+24.8
111+46.4
111+68.0
111+89.6
112+11.2
112+32.8
112+54.4
112+76.0
112+97.6
113+19.2
113+40.8
113+62.4
113+84.0
114+05.6
114+27.2
114+48.8
114+70.4
114+92.0
115+13.6
115+35.2
115+56.8
115+78.4
115+99.2
116+20.8
116+42.4
116+64.0
116+85.6
117+07.2
117+28.8
117+50.4
117+72.0
117+93.6
118+15.2
118+36.8
118+58.4
118+80.0
119+01.6
119+23.2
119+44.8
119+66.4
119+88.0
120+09.6
120+31.2
120+52.8
120+74.4
120+96.0
121+17.6
121+39.2
121+60.8
121+82.4
122+04.0
122+25.6
122+47.2
122+68.8
122+90.4
123+12.0
123+33.6
123+55.2
123+76.8
123+98.4
124+20.0
124+41.6
124+63.2
124+84.8
125+06.4
125+28.0
125+49.6
125+71.2
125+92.8
126+14.4
126+36.0
126+57.6
126+79.2
127+00.8
127+22.4
127+44.0
127+65.6
127+87.2
128+08.8
128+30.4
128+52.0
128+73.6
128+95.2
129+16.8
129+38.4
129+60.0
129+81.6
130+03.2
130+24.8
130+46.4
130+68.0
130+89.6
131+11.2
131+32.8
131+54.4
131+76.0
131+97.6
132+19.2
132+40.8
132+62.4
132+84.0
133+05.6
133+27.2
133+48.8
133+70.4
133+92.0
134+13.6
134+35.2
134+56.8
134+78.4
134+99.2
135+20.8
135+42.4
135+64.0
135+85.6
136+07.2
136+28.8
136+50.4
136+72.0
136+93.6
137+15.2
137+36.8
137+58.4
137+80.0
138+01.6
138+23.2
138+44.8
138+66.4
138+88.0
139+09.6
139+31.2
139+52.8
139+74.4
139+96.0
140+17.6
140+39.2
140+60.8
140+82.4
141+04.0
141+25.6
141+47.2
141+68.8
141+90.4
142+12.0
142+33.6
142+55.2
142+76.8
142+98.4
143+20.0
143+41.6
143+63.2
143+84.8
144+06.4
144+28.0
144+49.6
144+71.2
144+92.8
145+14.4
145+36.0
145+57.6
145+79.2
146+00.8
146+22.4
146+44.0
146+65.6
146+87.2
147+08.8
147+30.4
147+52.0
147+73.6
147+95.2
148+16.8
148+38.4
148+60.0
148+81.6
149+03.2
149+24.8
149+46.4
149+68.0
149+89.6
150+11.2
150+32.8
150+54.4
150+76.0
150+97.6
151+19.2
151+40.8
151+62.4
151+84.0
152+05.6
152+27.2
152+48.8
152+70.4
152+92.0
153+13.6
153+35.2
153+56.8
153+78.4
153+99.2
154+20.8
154+42.4
154+64.0
154+85.6
155+07.2
155+28.8
155+50.4
155+72.0
155+93.6
156+15.2
156+36.8
156+58.4
156+80.0
157+01.6
157+23.2
157+44.8
157+66.4
157+88.0
158+09.6
158+31.2
158+52.8
158+74.4
158+96.0
159+17.6
159+39.2
159+60.8
159+82.4
160+04.0
160+25.6
160+47.2
160+68.8
160+90.4
161+12.0
161+33.6
161+55.2
161+76.8
161+98.4
162+20.0
162+41.6
162+63.2
162+84.8
163+06.4
163+28.0
163+49.6
163+71.2
163+92.8
164+14.4
164+36.0
164+57.6
164+79.2
165+00.8
165+22.4
165+44.0
165+65.6
165+87.2
166+08.8
166+30.4
166+52.0
166+73.6
166+95.2
167+16.8
167+38.4
167+60.0
167+81.6
168+03.2
168+24.8
168+46.4
168+68.0
168+89.6
169+11.2
169+32.8
169+54.4
169+76.0
169+97.6
170+19.2
170+40.8
170+62.4
170+84.0
171+05.6
171+27.2
171+48.8
171+70.4
171+92.0
172+13.6
172+35.2
172+56.8
172+78.4
172+99.2
173+20.8
173+42.4
173+64.0
173+85.6
174+07.2
174+28.8
174+50.4
174+72.0
174+93.6
175+15.2
175+36.8
175+58.4
175+80.0
176+01.6
176+23.2
176+44.8
176+66.4
176+88.0
177+09.6
177+31.2
177+52.8
177+74.4
177+96.0
178+17.6
178+39.2
178+60.8
178+82.4
179+04.0
179+25.6
179+47.2
179+68.8
179+90.4
180+12.0
180+33.6
180+55.2
180+76.8
180+98.4
181+20.0
181+41.6
181+63.2
181+84.8
182+06.4
182+28.0
182+49.6
182+71.2
182+92.8
183+14.4
183+36.0
183+57.6
183+79.2
184+00.8
184+22.4
184+44.0
184+65.6
184+87.2
185+08.8
185+30.4
185+52.0
185+73.6
185+95.2
186+16.8
186+38.4
186+60.0
186+81.6
187+03.2
187+24.8
187+46.4
187+68.0
187+89.6
188+11.2
188+32.8
188+54.4
188+76.0
188+97.6
189+19.2
189+40.8
189+62.4
189+84.0
190+05.6
190+27.2
190+48.8
190+70.4
190+92.0
191+13.6
191+35.2
191+56.8
191+78.4
191+99.2
192+20.8
192+42.4
192+64.0
192+85.6
193+07.2
193+28.8
193+50.4
193+72.0
193+93.6
194+15.2
194+36.8
194+58.4
194+80.0
195+01.6
195+23.2
195+44.8
195+66.4
195+88.0
196+09.6
196+31.2
196+52.8
196+74.4
196+96.0
197+17.6
197+39.2
197+60.8
197+82.4
198+04.0
198+25.6
198+47.2
198+68.8
198+90.4
199+12.0
199+33.6
199+55.2
199+76.8
199+98.4
200+20.0
200+41.6
200+63.2
200+84.8
201+06.4
201+28.0
201+49.6
201+71.2
201+92.8
202+14.4
202+36.0
202+57.6
202+79.2
203+00.8
203+22.4
203+44.0
203+65.6
203+87.2
204+08.8
204+30.4
204+52.0
204+73.6
204+95.2
205+16.8
205+38.4
205+60.0
205+81.6
206+03.2
206+24.8
206+46.4
206+68.0
206+89.6
207+11.2
207+32.8
207+54.4
207+76.0
207+97.6
208+19.2
208+40.8
208+62.4
208+84.0
209+05.6
209+27.2
209+48.8
209+70.4
209+92.0
210+13.6
210+35.2
210+56.8
210+78.4
210+99.2
211+20.8
211+42.4
211+64.0
211+85.6
212+07.2
212+28.8
212+50.4
212+72.0
212+93.6
213+15.2
213+36.8
213+58.4
213+80.0
214+01.6
214+23.2
214+44.8
214+66.4
214+88.0
215+09.6
215+31.2
215+52.8
215+74.4
215+96.0
216+17.6
216+39.2
216+60.8
216+82.4
217+04.0
217+25.6
217+47.2
217+68.8
217+90.4
218+12.0
218+33.6
218+55.2
218+76.8
218+98.4
219+20.0
219+41.6
219+63.2
219+84.8
220+06.4
220+28.0
220+49.6
220+71.2
220+92.8
221+14.4
221+36.0
221+57.6
221+79.2
222+00.8
222+22.4
222+44.0
222+65.6
222+87.2
223+08.8
223+30.4
223+52.0
223+73.6
223+95.2
224+16.8
224+38.4
224+60.0
224+81.6
225+03.2
225+24.8
225+46.4
225+68.0
225+89.6
226+11.2
226+32.8
226+54.4
226+76.0
226+97.6
227+19.2
227+40.8
227+62.4
227+84.0
228+05.6
228+27.2
228+48.8
228+70.4
228+92.0
229+13.6
229+35.2
229+56.8
229+78.4
229+99.2
230+20.8
230+42.4
230+64.0
230+85.6
231+07.2
231+28.8
231+50.4
231+72.0
231+93.6
232+15.2
232+36.8
232+58.4
232+80.0
233+01.6
233+23.2
233+44.8
233+66.4
233+88.0
234+09.6
234+31.2
234+52.8
234+74.4
234+96.0
235+17.6
235+39.2
235+60.8
235+82.4
236+04.0
236+25.6
236+47.2
236+68.8
236+90.4
237+12.0
237+33.6
237+55.2
237+76.8
237+98.4
238+20.0
238+41.6
238+63.2
238+84.8
239+06.4
239+28.0
239+49.6
239+71.2
239+92.8
240+14.4
240+36.0
240+57.6
240+79.2
241+00.8
241+22.4
241+44.0
241+65.6
241+87.2
242+08.8
242+30.4
242+52.0
242+73.6
242+95.2
243+16.8
243+38.4
243+60.0
243+81.6
244+03.2
244+24.8
244+46.4
244+68.0
244+89.6
245+11.2
245+32.8
245+54.4
245+76.0
245+97.6
246+19.2
246+40.8
246+62.4
246+84.0
247+05.6
247+27.2
247+48.8
247+70.4
247+92.0
248+13.6
248+35.2
248+56.8
248+78.4
248+99.2
249+20.8
249+42.4
249+64.0
249+85.6
250+07.2
250+28.8
250+50.4
250+72.0
250+93.6
251+15.2
251+36.8
251+58.4
251+80.0
252+01.6
252+23.2
252+44.8
252+66.4
252+88.0
253+09.6
253+31.2
253+52.8
253+74.4
253+96.0
254+17.6
254+39.2
254+60.8
254+82.4
255+04.0
255+25.6
255+47.2
255+68.8
255+90.4
256+12.0
256+33.6
256+55.2
256+76.8
256+98.4
257+20.0
257+41.6
257+63.2
257+84.8
258+06.4
258+28.0
258+49.6
258+71.2
258+92.8
259+14.4
259+36.0
259+57.6
259+79.2
260+00.8
260+22.4
260+44.0
260+65.6
260+87.2
261+08.8
261+30.4
261+52.0
261+73.6
261+95.2
262+16.8
262+38.4
262+60.0
262+81.6
263+03.2
263+24.8
263+46.4
263+68.0
263+89.6
264+11.2
264+32.8
264+54.4
264+76.0

CONSTRUCTION RECORD						SERVICE RECORD						
STATION	ELEVATION		Depth	MANHOLE	4-INCH "Y" BRANCHES		No. of Permit		House Number		DATE OF PERMITS	
	Ground	Grade			North West	South East	North West	South East	North West	South East	North West	South East
FORCE MAIN & PUMP STATION (THE MOORINGS)												
0+00	130.2	121.54	8.7	0+00 EXISTING IN ARKANSAS S OF 37TH								
	131.5	121.71 121.81	9.8 9.7	0+65.1								
1+00		122.16 122.25	10.0 9.9	1+91.2								
2+00												
3+00												
4+00												
5+00												
6+00	131.5	123.38	8.1	6+08.5								
7+00												
8+00												
9+00												
10+00	132.4	124.51 124.61	7.9 7.8	10+26.0								
11+00												
12+00												
13+00												
14+00	133.0	125.95	7.1	14+86.9	13+70.9		075420		1127 W 36 32 N		11-21-79	
15+00												
16+00												
17+00	133.6	126.76	6.8	17+85.8								
18+00												
19+00												
20+00												
21+00	134.4	127.68	6.7	21+25.1								
22+00												
23+00	132.9	128.30 128.40	4.6 4.5	23+55.4	mntay		15609		1124 W 36 N		2-5-86	
24+00												
25+00	132.7	128.86 129.03	3.8	25+27.8								
0+00	139.7	135.70	4.0	LIFT STA 45TH MERIDIAN								
0+22	139.7	135.82	3.9	AIR RELEASE VALVE								
1+040				Bend S								
2+21				Bend E								

CONT'D NEXT PAGE