

RECONSTRUCTION OF PORTION
LATERAL 5 DISTRICT C 35 N^o 20
BUILT BY: MID STATES CONST. CO.
PROJ. N^o 542-80-245-80001-000-000-001
BOOKED 8-8-79 FROM G-6

ON MAP

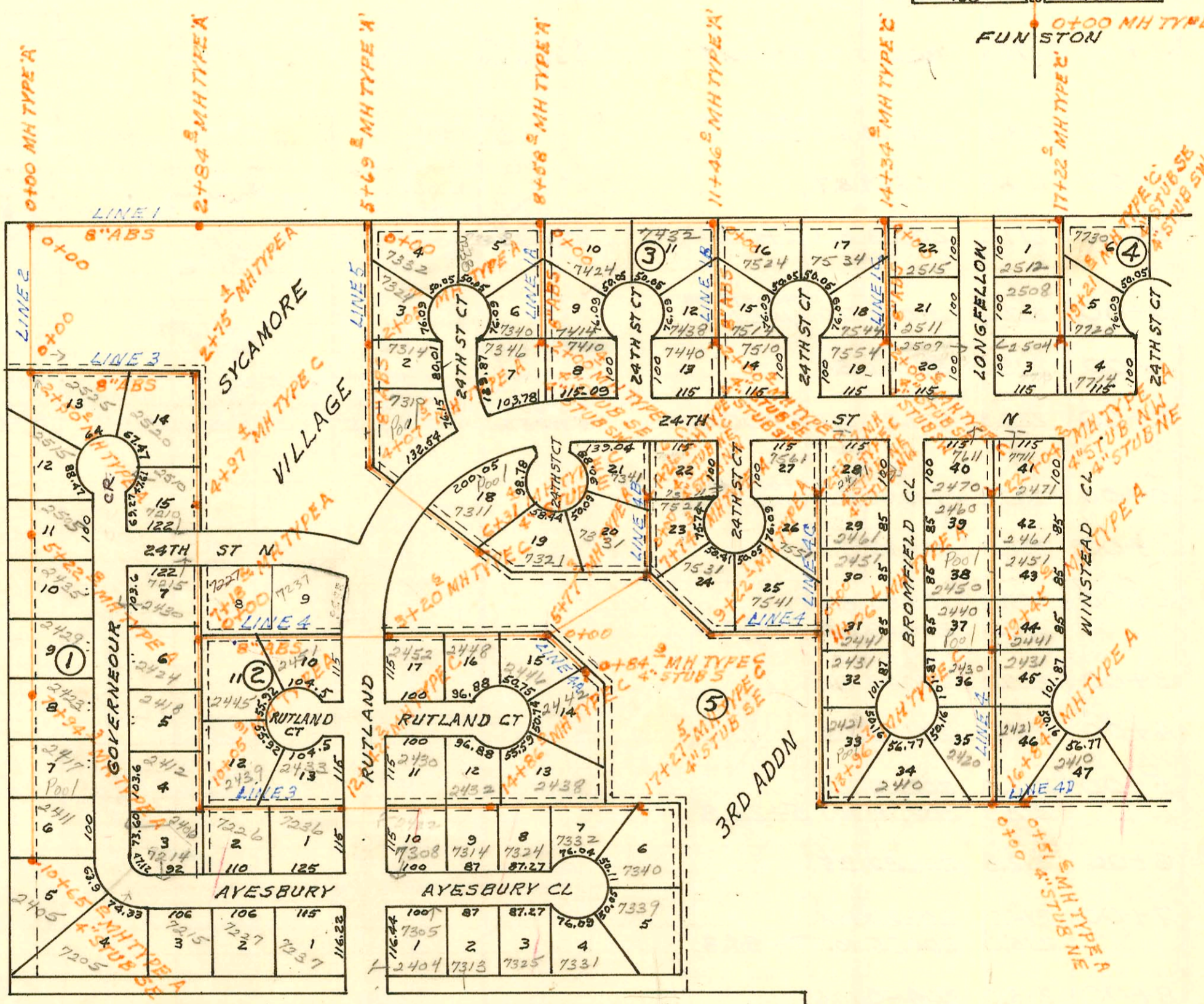
SCALE 1" = 150'

50	150	20	150	49	25
52				51	
54				53	
56				55	
58				57	
60				59	
62				61	
64				63	
66				65	
68				67	
70				69	
72				71	
74				73	
76				75	
78				77	
80				79	
82				81	
84				83	
86				85	
88				87	
90				89	
92				91	
94				93	
96	150	20	150	95	25

MEAD

MOSLEY

FUN STON



LATERAL 37 SAN SEWER N^o 23
BUILT BY: UTILITY CONTR. INC.
PROJ. N^o 468-76-245-80595-000-000-001
BOOKED 8-15-79 FROM MRT #5

ON MAP

SCALE 1" = 200'

CONSTRUCTION RECORD

SERVICE RECORD

STATION	ELEVATION		Depth	MANHOLE	4-INCH "Y" BRANCHES		No. of Permit		House Number		DATE OF PERMITS	
	Ground	Grade			North West	South East	North West	South East	North West	South East	North West	South East
LATERAL 18 MAIN 3 SWI (CONT'D)												
LINE 2 CONT'D 4+00	87.7	81.82	5.9		4" SCH 40 3+92.6		99-00980		1219 432d		10-21-99	
	87.6	81.90	5.7	4+39.6								
5+00	87.7	82.02	5.7				98-15487		1209 W 432d		8-14-98	
6+00	87.8	82.22	5.6		4" SCH 40 5+93.4		1999- 00641		4433 S DODGE		9-13-99	
6+61.4	86.4	82.34	4.1									
LINE 3 0+00	87.6	82.00	5.6	0+00 = 4+39.6 LINE 2								
1+06.7	87.6	82.42	5.2	1+06.7	4" STUB SW 4" STUB E							
RECONSTRUCT PORTION LAT 5 DIST C 55 N^o 20												
0+00	104.1	95.60	8.5	0+00	1 1/2" SCH 40 0+32.6 E		98-11877 C72406		1757 S 3/4 masonry		2-2-94-96 6-19-82	
					0+85.5 E		C72407		1755 S 1/2 masonry		6-19-82	
1+00	104.2	95.74	8.5		1+00 6" W		C72408		816 S Function		6-19-79	
2+00	104.5	95.88	8.6				19548 C72602		1749 S masonry		11/10/87 6-21-79	
	104.6	95.91	8.7	2+17.8								
3+00	104.8	96.02	8.8						1723 S masonry		6-27-79	
					3+36.8 E		C72604		1719 S masonry		6-27-79	
					3+88.8 E		C72603					
4+00	105.4	96.16	9.2									
	105.2	96.22	9.0	4+38.5	4" STUB E							
					4+90.8 W 4+89 E		C72598		1711 S masonry		6-27-79	
5+00	105.0	96.30	8.7				C72599		1707 S masonry		6-27-79	
					5+29.4 E		21475		1703 S masonry		6-27-79	
					5+90.0 E		072600				6-27-79	
6+00	104.6	96.43	8.2									
	104.3	96.50	7.8	6+57.0								
LATERAL 37 SAN SEWER N^o 23												
LINE 1 0+00	205.2	196.00	9.2	0+00								
1+00	203.0	196.40	6.6									
2+00	203.0	196.80	6.2									
	205.0	197.14	7.9	2+84.8								
		199.00	6.0									
3+00	204.6	199.18	5.4									
4+00	205.7	200.38	5.3									
5+00	207.7	201.58	6.1									
	209.5	202.43	7.1	5+69.8								
6+00	209.2	202.66	6.5									
					6+58.4 E		5240		7332 E 244 S 1/2		2-24-82	
7+00	210.0	203.46	6.5									
					7+79.1 E		3453		7338 E 244 S 1/2		6-8-81	
8+00	210.8	204.26	6.5									
	211.5	204.73	6.8	8+58.0								
9+00	211.7	205.06	6.6									
					9+40.6 E		5839		7424 E 244 S 1/2		5-11-82	
10+00	212.2	205.86	6.3									
					10+63.0 E		2511		7432 E 244 S 1/2		1-29-81	
11+00	212.7	206.66	6.0									
	213.5	207.03	6.5	11+46.0								
12+00	214.3	207.56	6.7									
					12+69.0 E		6480		7524 E 244 S 1/2		9-3-82	
13+00	215.3	208.56	6.7									
					13+38.0 E		3456		7534 E 244 S 1/2		6-8-81	
14+00	216.9	209.56	7.3									
	217.0	209.91	7.1	14+34.0								
15+00	218.5	210.17	8.3									

CONT'D NEXT PAGE

N/C C72605-1717 S masonry Howard Sada (Re Coy) 6-27-79 (no meas. given)
N/C C72601 - 815 S. Oak " " " " " (52.2 N of mtl) -

CONSTRUCTION RECORD						SERVICE RECORD						
STATION	ELEVATION		Depth	MANHOLE	4-INCH "Y" BRANCHES		No. of Permit		House Number		DATE OF PERMITS	
	Ground	Grade			North West	South East	North West	South East	North West	South East	North West	South East
LAT 37 55 LINE 1 CONT'D	N#23 (CONT'D)											
16+00	218.4	210.57	7.8									
17+00	219.7 220.5	210.97 211.06 211.16	8.7 9.4 9.3	17+22.0	17+56.8	17+73.0	5575	4343	2512 Longfellow	7730 E 24th Ct	4-8-82	10-14-81
18+00	220.9	211.63	9.3									
19+00	221.7 221.7	212.23 212.36	9.5 9.3	19+21.8	18+87.9	19+16.6	76349 744	1067	2508 Longfellow	7720 24th Ct	1-25-80 7-14-80	8-22-80
LINE 1A	0+00	211.5	205.00	6.5	0+00=8+58 LINE 1							
1+00	215.2	205.50	9.7									
2+00	215.5	206.00	9.5	2+00.4	1+77.9							
LINE 1B	0+00	213.5	207.13	6.4	0+00=11+46 LINE 1							
1+00	216.3	207.63	8.7									
2+00	217.0	208.13	8.9	2+00.4	1+79.4							
LINE 1C	0+00	217.0	210.01	7.0	0+00=14+34 LINE 1							
1+00	219.0	210.61	8.4									
2+00	220.3	211.21	9.1	2+00.6	1+30.6							
LINE 2	0+00	205.2	199.00	6.2	0+00=0+00 LINE 1							
1+00	206.8	199.40	7.4									
2+00	207.8 208.0	199.80 200.00	8.0 8.0	2+50.0								
3+00	209.0	200.40	8.6									
4+00	211.1	201.20	9.9									
5+00	212.0 212.3	202.00 202.18	10.0 10.1	5+22.8								
6+00	212.3	202.80	9.5									
7+00	214.0 215.0	203.60 204.35	10.4 10.7	7+94.3								
8+00	215.0	204.40	10.6									
9+00	215.6	205.20	10.4									
10+00	215.3 214.8	206.00 206.53	9.3 8.3	10+65.0								
LINE 3	0+00	208.0	200.10	7.9	0+00=2+50 LINE 2							
1+00	207.3	200.50	6.8									
2+00	206.7 207.0	200.90 201.20 201.30	5.8 5.8 5.7	2+75.4								
3+00	206.2	201.45	4.8									
4+00	209.0 211.9	202.05 202.63	7.0 9.3	4+97.4								

CONT'D NEXT PAGE

CONSTRUCTION RECORD

SERVICE RECORD

LAT 37
LINE 3
CONT'D

STATION	ELEVATION		Depth	MANHOLE	4-INCH "Y" BRANCHES		No. of Permit		House Number		DATE OF PERMITS	
	Ground	Grade			North West	South East	North West	South East	North West	South East	North West	South East
5+00	212.0	202.65	9.4									
6+00	212.1	203.25	8.9									
7+00	214.3 214.8	203.85 203.96	10.5 10.8	7+18.2	6+71.6 ^{top} 7+57.8 ^{top}		3982 4778		2480 N Governors 2424 Governors		8-24-81 12-22-81	
8+00	215.2	204.45	10.8		8+49.6 ^{top}		5137	5838	2412 N Governors	2439 Rutland	1-29-82	5-11-82
9+00	215.7	205.06	10.6		9+60.3 ^{top}	9+22.0 ^{top}	3781		2412 N Governors		7-27-81	
10+00	215.5 215.5	205.66 OUT 205.69 IN 205.79	9.8 9.8 9.7	10+05.9		4" stub 10+66.7 ^{top}	#3126 5651			2406 N Governors 726 Ayersbury		1-28-81 4-20-82
11+00	215.5	206.17	9.3			11+74.7 ^{top}		2096		7236 Ayersbury		12-12-80
12+00	216.0 216.2	206.57 206.73	9.4 9.5	12+42.2	12+12.3 ^{top}		4910		2433 N Rutland		11-30-81	
13+00	216.4	206.97	9.4			13+69.2 ^{top}		3292	2430 Rutland	7308 Ayersbury	5-13-81	6-8-81
14+00	217.5 218.5	207.23 207.71	10.3 10.8	14+86.0	13+79.5 ^{top} 14+39.1 ^{top} 14+67.6 ^{top}	14+79.5 ^{top} 14+90.0 ^{top}	3452 1894 3084	3452 1894	7314 Ayersbury 3432 Rutland Ct	7314 Ayersbury	5-13-81 11-17-80 12-12-80	6-8-81 11-17-80
15+00	218.6	207.93	10.7		15+67.0 ^{top}		2626		2438 Rutland Ct		2-17-81	
16+00	220.0	209.53	10.5			16+23.3 ^{top}	3904			7332 Ayersbury		3-23-81
17+00	220.5 221.0	211.13 211.58	9.4 9.4	17+27.5		17+23.5 ^{top} 4" STUB SE	2903			7340 Ayersbury		3-23-81
0+00	214.8	204.06	10.7	0+00=7+18.2 LINE 3	0+39.6 ^{top}		3691		7227 E 2428 N		7-15-81	
1+00	215.0	204.46	10.5			0+63.8 ^{top}	3981			2445 Rutland		8-24-81
2+00	215.3	204.86	10.4		1+56.9 ^{top}	1+95.3 ^{top}	3550	3973	7237 E 2428 N	2451 Rutland Ct	6-23-81	8-21-81
3+00	216.1 215.6	205.26 205.34	10.8 10.3	3+20.6		3+78.5 ^{top}	#02465			2452 Rutland Ct		1-23-81
4+00	216.6	205.66	10.9			4+57.7 ^{top}	1346			2448 Rutland		9-24-80
5+00	217.8 219.0	206.06 OUT 206.37 IN 206.47	11.7 12.1 12.5	5+77.3								
6+00	219.2	206.56	12.6									
7+00	220.7 220.2	206.96 207.26 207.36	13.7 12.9 12.8	7+74.3								
8+00	220.5	207.46	13.0									
9+00	221.7 221.8	207.86 207.94 208.04	13.8 13.9 13.8	9+22.1	8+67.1 ^{top}		2516		7531 E 2445 St Ct		1-27-81	
10+00	221.7	208.36	13.3									
11+00	221.8 221.5	208.76 208.78 208.88	13.0 12.7 12.6	11+06.1	10+47.6 ^{top}		1552		7541 E 42 St Ct		10-22-80	
12+00	221.4	209.26	12.1			11+89.20	#00043			2431 Brownfield		4-9-80
13+00	221.5 221.5	209.66 210.04 210.14	11.8 11.5 11.4	13+96.7	13+11.6 ^{top}		276891		2421 Brownfield		3-19-80	
14+00	221.5	210.15	11.4									
15+00	221.2	210.56	10.6		15+38.6 ^{top}		276993		2410 Brownfield		3-25-80	

CONT'D NEXT PAGE

CONSTRUCTION RECORD

SERVICE RECORD

STATION	ELEVATION		Depth	MANHOLE	4-INCH "Y" BRANCHES		No. of Permit		House Number		DATE OF PERMITS		
	Ground	Grade			North West	South East	North West	South East	North West	South East	North West	South East	
LAT 37 SS N ^o 23 (CONT'D)													
LINE 4	16+00	220.9	210.96	9.9									
		221.0	211.39	9.6	16+84.0								
	17+00	221.2	211.46	9.7	17+70.6		C76994		2420		3-25-80		
						17+53.0		C75836	2421	Windstead		12-20-79	
	18+00	220.3	211.86	8.4	18+87.2		#203	C75932	2430	2431	4-30-80	1-4-80	
						18+98.0			2430	Windstead			
	19+00	220.5	212.26	8.2	19+21.0			C75837		2441		12-20-79	
		220.8	212.43	8.4	19+45.6				2440	Windstead			
						19+62		#421	2440	Stromfield		6-2-80	
	20+00	220.5	212.66	7.8	20+61.2		C76997	C75389	2450	2451	3-25-80	11-19-79	
						20+61.2			2450	Windstead			
	21+00	220.7	213.06	7.6	21+50.8		C76996	#00813	2460	2461	3-25-80	7-21-80	
						21+80.2			2460	Windstead			
	22+00	220.7	213.46	7.2	22+04.2	4" STUB NW	#204	#505	2470	2471	4-30-80	4-30-80	
		220.7	213.47	7.2	22+04.2	4" STUB NE			2470	Windstead			
LINE 4A	0+00	219.0	210.20	8.8	0+00=5+77.3	LINE 4			2446			11-17-80	
						0+11.6		1895	2446	Putland			
		220.8	210.54	10.3	0+84.9	4" STUB S		820	3442	Putland		7-22-80	
LINE 4B	0+00	219.5	207.37	12.1	0+00=7+74.3	LINE 4							
						0+550		#01153	#746	7531 E	7521 E	9-8-80	7-14-80
	1+00	218.0	207.37	10.6	1+26.6	4" STUB NE		#223	#01344	#00813	7561 E	2444 Ct	5-6-80
		217.5	207.88	9.6	1+26.6	4" STUB NW				7561 E	2444 Ct	9-24-80	7-23-80
LINE 4C	0+00	221.5	208.88	12.6	0+00=11+06.1	LINE 4							
						0+28		C76985		2441	Stromfield		3-25-80
	1+00	221.6	209.28	12.3	1+16.3			#00814		2451	Stromfield		7-21-80
						1+73.5		1154		7551 E	2442 N.Ct		9-8-80
	2+00	220.2	209.68	10.5	2+30.7	4" STUB NE		222		2461	Stromfield		5-6-80
		219.5	209.80	9.7	2+30.7	4" STUB NW		#00942		2471	Stromfield		7-23-80
LINE 4D	0+00	221.0	211.39	9.6	0+00=16+84.0	LINE 4							
						0+51.6		C75960		2410	Windstead		11-26-79
LINE 5	0+00	209.5	202.53	7.0	0+00=5+69.8	LINE 1							
						0+68							
	1+00	210.0	203.13	6.9	1+68.0			2901		7324 E	2445 Ct		3-23-81
	2+00	211.0	203.73	7.3	2+05.2			#02889		7314 E	2444 Ct		3-19-81
		211.0	203.76	7.2	2+05.2								
	3+00	212.0	204.33	7.7	3+44.5			2083		7310 E	2445 Ct		12-12-80
	4+00	212.7	204.93	7.8	4+07.5								
		213.5	204.97	8.5	4+07.5								
			205.07	8.4	4+07.5								
	5+00	213.7	205.63	8.1	5+78.2			815		7311 E	2445 Ct		7-21-80
	6+00	215.1	206.23	8.9	6+31.4	4" STUB E		1746		7321 E	2445 Ct		11-21-80
		217.0	206.42	10.6	6+31.4	4" STUB E							
LATERAL 13 MAIN 7 SAN SEWER N ^o 23													
LINE 1	0+00	170.8	161.01	9.8	0+68	EXISTING		C73875		6427 E	32nd Ct		8-24-71
	1+00	170.2	161.41	8.8	2+10			C73833		6423 E	32nd Ct		8-22-79
	2+00	169.8	161.81	8.0	2+26.0			C73832		6419 E	32nd Ct		8-22-79
		169.9	161.91	8.0	2+26.0					6415			
	3+00	169.5	162.21	7.3	3+51.6			C73831		6419 E	32nd Ct		8-22-79

CONT'D NEXT PAGE