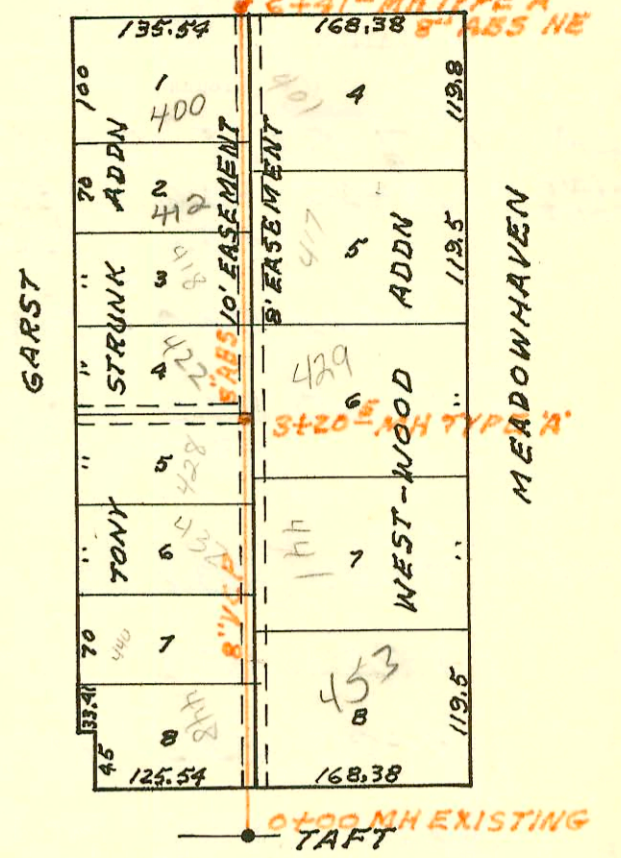


LATERAL 31 MAIN 4 SOUTHWEST INTERCEPTOR
BUILT BY: MID STATES CONST. CO.
PROJ. N^o 468-76-245-80741-000-000-001
BOOKED 9-20-79 FROM LES 10

011 map 6-50

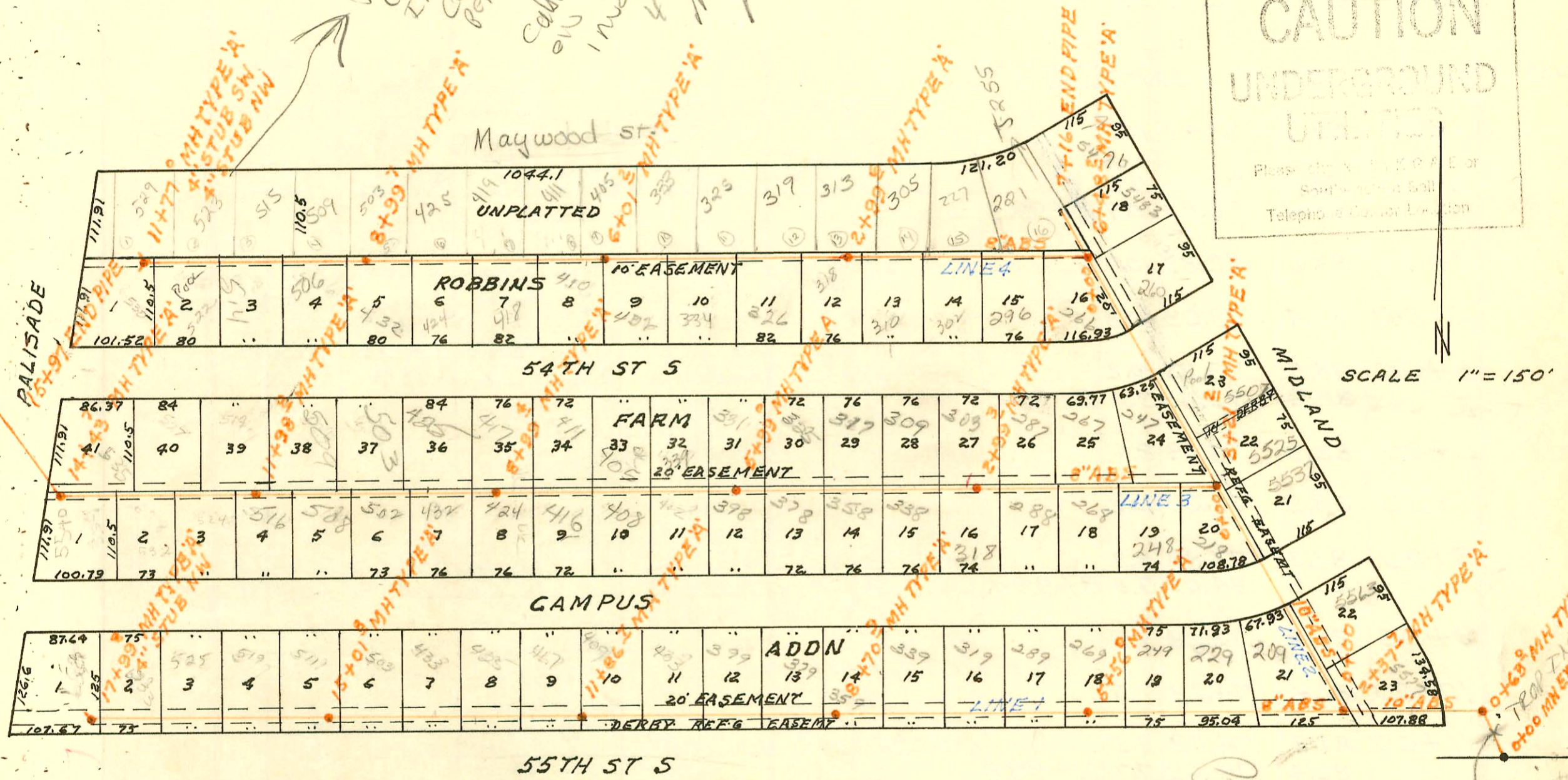
UNIVERSITY



SCALE 1"=150'

TMD Telecom
 C8200 w/ Devm)
 Installing cable for
 Ret Comm. on 7th story
 Cable being installed
 on Maywood street
 involves appor subg
 4 to S itewres on
 palisade of
 BL

CAUTION
 UNDERGROUND
 UTILITIES
 Please do not dig or
 tamper with a Gas,
 Telephone or Cable Line



LATERAL 127 SOUTHWEST INTERCEPTOR
 BUILT BY: MID STATES CONST. CO.
 PROJ. N^o 468-76-245-80578-000-000-001
 BOOKED 9-22-79 FROM CLG 14

011 map

CONSTRUCTION RECORD

SERVICE RECORD

STATION	ELEVATION		Depth	MANHOLE	4-INCH "Y" BRANCHES		No. of Permit		House Number		DATE OF PERMITS		
	Ground	Grade			North West	South East	North West	South East	North West	South East	North West	South East	
LAT 127 SWI CONT'D													
LINE 1 CONT'D	15+00	83.6	75.39	8.2									
		83.6	75.40	8.2	15+01.8	15+13.8		8788		511 w. Campus		7-25-83	
						15+27.8		11483		519 w. Campus		7-16-84	
	16+00	83.0	75.69	7.3		16+48.4		11430		525 w. Campus		7-11-84	
	17+00	82.5	75.99	6.5		17+60.3		4386		533 w. Campus		10-1-81	
		83.2	76.29	6.9	17+99.8	4'STUB NW		3970		539 w. Campus		8-20-81	
LINE 2													
	0+00	83.2	71.54	11.7	0+00=2+37.7								
					LINE 1								
						0.79.5 No. Tap	0+88	#93254-7	C72852	209 w. Campus	5563 Midland	2-4-93	7-10-79
	1+00	83.1	71.72	11.4									
	2+00	83.2	71.90	11.3									
							2+79.9		C73701		5537 Midland		8-20-79
	3+00	83.0	72.08	10.9									
		83.0	72.12	10.9	3+21.2				C72853		5525 Midland		7-10-79
	4+00	83.2	72.26	10.9		4+29.3		3483		247 w. 544 S		6-12-81	
									C14148		5507 Midland		7-10-79
	5+00	83.5	72.44	11.1									
							5+93.2		644		260 w. 544 S		6-28-80
	6+00	83.3	72.62	10.7									
		83.0	72.71	10.3	6+48.2								
							6+69.2		11861		5483 Midland		8-24-84
	7+00	82.2	72.80	9.4									
	7+16	82.5	72.83	9.7									
LINE 3													
	0+00	83.0	72.29	10.7	0+00=3+21.2								
					LINE 2								
							0+11.9		#500		218 Campus		6-9-80
	1+00	83.7	72.49	11.2			0+72.0		C73636		248 w. Campus		8-15-79
	2+00	83.9	72.69	11.2		1+47.0		2351		267 w. 544 S		1-13-81	
	2+00	83.6	72.89	10.7	2+99.3	2+26.5	2+21.3	C74553	12130	287 w. 544 S		9-28-79	
	3+00	83.6	72.89	10.7		3+16.3	3+09.3	2578	C74147	303 w. 544 S	318 Campus	2-9-81	9-7-79
							3+75.7		C74550		388 Campus		9-28-79
	4+00	83.4	73.09	10.3		4+07.4		4823		209 w. 544 S		11-30-81	
						4+58.3	4+48	5707	#60289	217 w. 544 S	358 w. Campus	4-22-82	5-12-80
	5+00	83.5	73.29	10.2		5+14.4	5+25.5	2352	13101	325 w. 544 S	378 w. Campus	1-13-81	3-8-80
		82.9	73.49	9.4	5+99.0								
							5+93.5		C75173		398 w. Campus		11-2-79
	6+00	82.9	73.49	9.4		6+16.0		12426		331 w. 544 S		10-31-84	
						6+81.7	6+80.7	5612	3416	339 w. 544 S	402 w. Campus	5-27-82	6-3-81
	7+00	83.9	73.69	10.2									
						7+62.4		3396		405 w. 544 S		5-22-80	
	8+00	83.2	73.89	9.3		8+17.7	8+33.4	3387	3384	411 w. 544 S	408 w. Campus	5-22-80	5-22-80
		81.9	74.09	7.8	8+99.4		8+60.4		3385		416 w. Campus		5-22-80
							8+95.4		3599		424 w. Campus		6-20-80
	9+00	81.9	74.09	7.8		9+10.8		3388		417 w. 544 S		5-22-80	
						9+89.0	9+64.9	1892	4600	405 w. 544 S	432 w. Campus	11-14-80	6-20-80
	10+00	81.8	74.29	7.5									
						10+43.8	10+47.8	3135	#00551	503 w. 544 S	507 w. Campus	4-16-81	6-11-80
	11+00	81.8	74.49	7.3		11+39.2	11+24.3	3136	#00552	508 w. 544 S	508 w. Campus	4-16-81	6-11-80
		82.4	74.69	7.7	11+98.8		11+86.4		#00553	516 w. Campus			6-11-80
	12+00	82.4	74.69	7.7		12+09.4		6297		519 w. 544 S		8-23-82	
						12+96.8	12+85.3	11429	4057	527 w. 544 S	524 w. Campus	7-11-84	9-2-81
	13+00	82.2	74.89	7.3			13+45.8		1740		532 w. Campus		11-6-80
						13+83.7		2051		535 w. 544 S		12-9-80	
	14+00	82.2	75.09	7.1			14+05.7		#499		5540 Palomares		6-9-80
		81.9	75.18	6.1	14+43.7								
			75.28	6.6									
	15+00	81.8	75.45	6.4									
	15+97	81.4	75.74	5.7									

CONT'D NEXT PAGE

