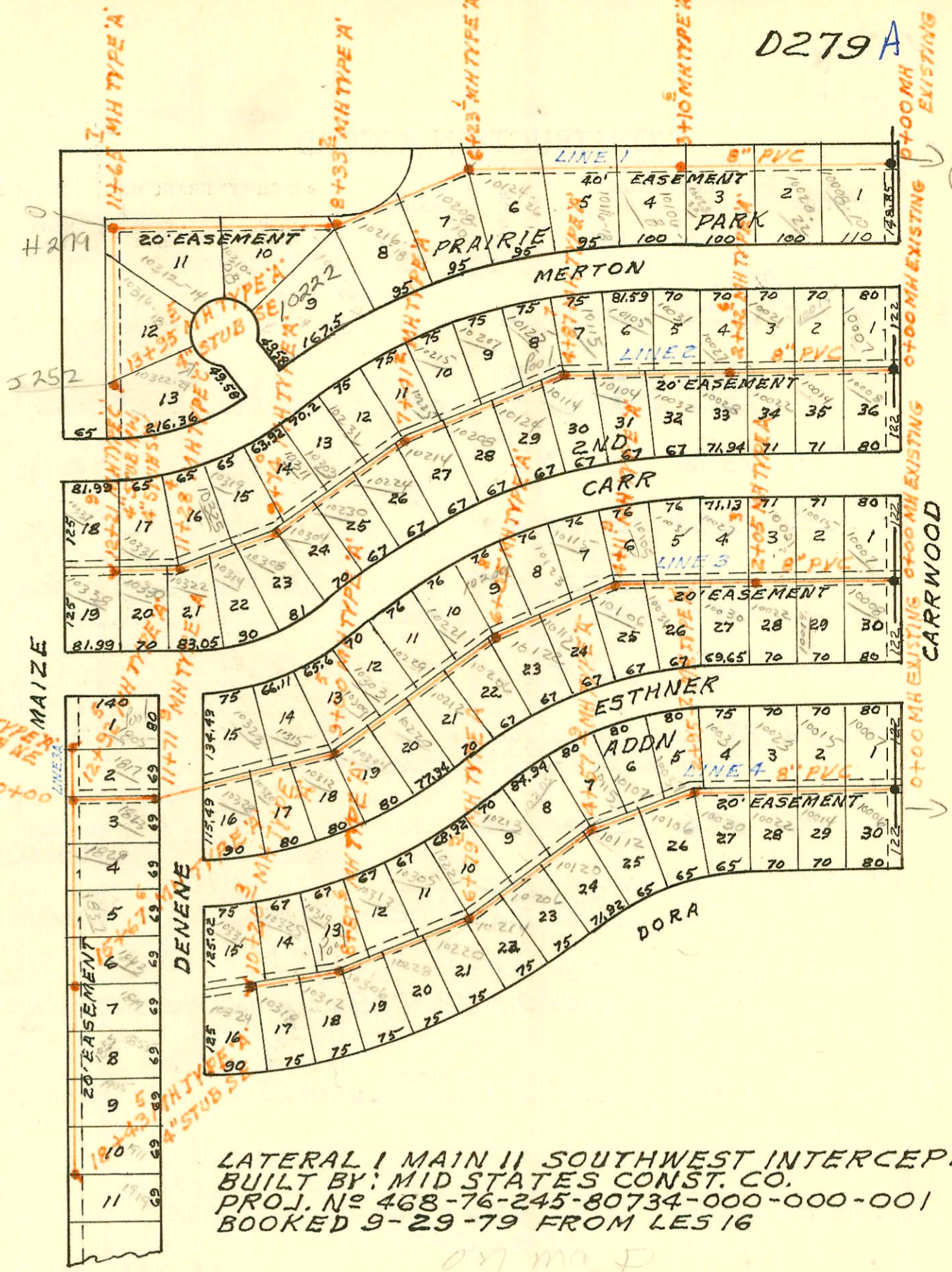


SCALE 1"=200'



LATERAL I MAIN II SOUTHWEST INTERCEPTOR
 BUILT BY: MID STATES CONST. CO.
 PROJ. No 468-76-245-80734-000-000-001
 BOOKED 9-29-79 FROM LES 16

4-63

CONSTRUCTION RECORD

SERVICE RECORD

LATI MAIN II SWI (CONT'D)
LINE 2 CONT'D

STATION	ELEVATION		Depth	MANHOLE	4-INCH "Y" BRANCHES		No. of Permit		House Number		DATE OF PERMITS	
	Ground	Grade			North West	South East	North West	South East	North West	South East	North West	South East
3+00	130.8	121.70	9.1		3+77.6 ^{tap}	3+88.0 ^{tap}	275819	8114	10105 merton	10032 Carr	12-19-79	5-10-83
4+00	131.2	122.10	9.1			4+28.0 ^{tap}		276218		10104 Carr		1-18-80
	131.6	122.55	9.2	4+87.7	4+52.7 ^{tap}	4+96.7 ^{tap}	276219	25378	10115 merton	10114 CARR	1-18-80	5-29-80
5+00	131.8	122.70	9.1		5+27.7 ^{tap}	5+38.7 ^{tap}	391	9790	10125 merton	10124 CARR	5-22-80	12-5-83
6+00	132.9	123.98	8.9		5+72.7 ^{tap}		392		10207 merton	10208 CARR	5-22-80	
					6+26.3 ^{tap}	6+37.2 ^{tap}	275715	25603	10215 merton	10208 CARR	12-13-79	6-21-80
7+00	134.8	125.26	9.5		7+05.7 ^{tap}		275820		10225 merton	10214 CARR	12-19-79	
	135.5	125.79	9.7	7+41.2	7+46.9 ^{tap}	6+90.2 ^{tap}	275717	22207	10231 merton	10214 CARR	12-13-79	12-13-84
		125.91	9.6			7+87.2 ^{tap}		276697		10224 CARR		3-5-80
8+00	136.2	126.15	10.1		8+44.5 ^{tap}		275716		10303 merton		12-13-79	
						8+62.2 ^{tap}		276698		10230 CARR		3-5-80
9+00	137.2	126.55	10.7		9+07.0 ^{tap}		274894		10311 merton		10-16-79	
	137.6	126.84	10.8	9+74.0		9+28.5 ^{tap}		276696		10304 CARR		3-5-80
		126.94	10.7			9+92.0 ^{tap}		276695		10308 CARR		3-5-80
10+00	137.6	127.04	10.6		10+03.0 ^{tap}		274895		10319 merton		10-16-79	
					10+87.5 ^{tap}	10+36.4 ^{tap}	274896	274900	10325 merton	10314 CARR	10-16-79	10-16-79
11+00	137.6	127.44	10.2			11+04.0 ^{tap}		274903		10322 CARR		10-16-79
	137.5	127.56	9.9	11+28.4	11+53.6 ^{tap}		274897		10331 merton		10-16-79	
		127.66	9.8			11+90.2 ^{tap}		274904		10330 CARR		10-16-79
12+00	137.4	127.94	9.8									
	137.3	128.03	9.3	12+21.9	4" STUB NW	4" STUB SW	274898	274906	10337 merton	10338 CARR	10-16-79	10-16-79
LINE 3 0+00	130.2	120.50	9.7	0+00 EXISTING	0+43.3 ^{tap}	0+46.3 ^{tap}	2110	1768	10007 CARR	10008 Esthner	12-15-80	11-6-80
						0+96.6 ^{tap}		22594	10014 CARR	10014 Esthner		2-12-81
1+00	130.0	120.90	9.1		1+07.5 ^{tap}		4885		10015 CARR		12-9-81	
						1+75.0 ^{tap}		4346		10022 Esthner		10-14-81
2+00	130.5	121.30	9.2		2+03 ^{tap}		1379		10021		5-7-85	
	130.5	121.33	9.2	2+06.3								
3+00	131.0	121.70	9.3		2+58.5 ^{tap}	2+53.8 ^{tap}	6673	12507	10027 CARR	10030 Esthner	10-28-82	11-8-84
					3+02.5 ^{tap}	3+34.2 ^{tap}	5167	3108	10031 CARR	10036 Esthner	2-2-82	4-13-81
					3+90.9 ^{tap}		275689		10105 CARR		12-11-79	
4+00	131.7	122.10	9.6			4+03.6 ^{tap}		275087		10106 Esthner		10-30-79
	132.0	122.15	9.9	4+11.9	4+23.6 ^{tap}		275690		10115 CARR	10112 Esthner	12-11-79	
		122.25	9.8			4+86.0 ^{tap}		3255		10112 Esthner		5-6-81
5+00	132.7	123.30	9.4		5+10.8 ^{tap}		3107		10123 CARR		4-13-81	
					5+78.8 ^{tap}	5+56.4 ^{tap}	3240	5666	10209 CARR	10122 Esthner	5-5-81	4-21-82
6+00	134.2	123.50	10.7									
	134.3	124.58	9.7	6+05.8	6+47.8 ^{tap}		1376		10221 CARR		9-29-80	
		124.66	9.6			6+71.8 ^{tap}		8616		10206 Esthner		7-5-83
7+00	135.3	125.79	9.5		7+13.3 ^{tap}	7+41.8 ^{tap}	3223	26043	10229 CARR	10212 Esthner	4-3-81	8-29-90
					7+83.5 ^{tap}		768		10303 CARR		7-16-80	
8+00	136.9	126.99	9.9			8+13.6 ^{tap}		5266		10220 Esthner		3-2-82
					8+40.7 ^{tap}	8+79.5 ^{tap}	274899	3222	10309 CARR	10304 Esthner	10-16-79	4-30-81
9+00	138.0	128.20	9.8	9+00.5	9+57.8 ^{tap}	9+47.1 ^{tap}	274901	767	10315 CARR	10312 Esthner	10-16-79	7-16-80
		128.31	9.7			9+78.1 ^{tap}		274902		10320 Esthner		10-16-79
10+00	138.9	128.71	10.2									
					10+79.6 ^{tap}	10+54.9 ^{tap}	274905	274907	10323 CARR	10328 Esthner	10-16-79	10-16-79
11+00	139.1	129.11	10.0									
	139.2	129.40	9.8	11+71.9								
		129.50	9.7									
12+00	139.3	129.61	9.7									
	139.7	129.98	9.7	12+92.5								
		130.08	9.6									
13+00	139.7	130.11	9.6			13+34.9 ^{tap}		274910		1823 Denene		10-16-79
						13+83.8 ^{tap}		274911		1824 Denene		10-16-79
14+00	139.5	130.51	9.0			14+36.6 ^{tap}		274912		1837 Denene		10-16-79
15+00	139.7	130.91	8.8			15+01.2 ^{tap}		274913		1843 Denene		10-16-79
	139.8	131.18	8.6	15+67.6								
16+00	139.8	131.31	8.5			16+33.3 ^{tap}		7313		1849 Denene		1-5-83
						16+73.5 ^{tap}		26375		1855 Denene		10-22-90
17+00	140.0	131.71	8.3									
						17+23.5 ^{tap}		7130		1705 Denene		12-7-82
18+00	140.3	132.11	8.2			17+86.5 ^{tap}		91321267		1911 Denene		12-09-91
	140.5	132.28	8.2	18+43.5	4" STUB SE		9380		1919 Denene			10-6-83

CONT'D NEXT PAGE

