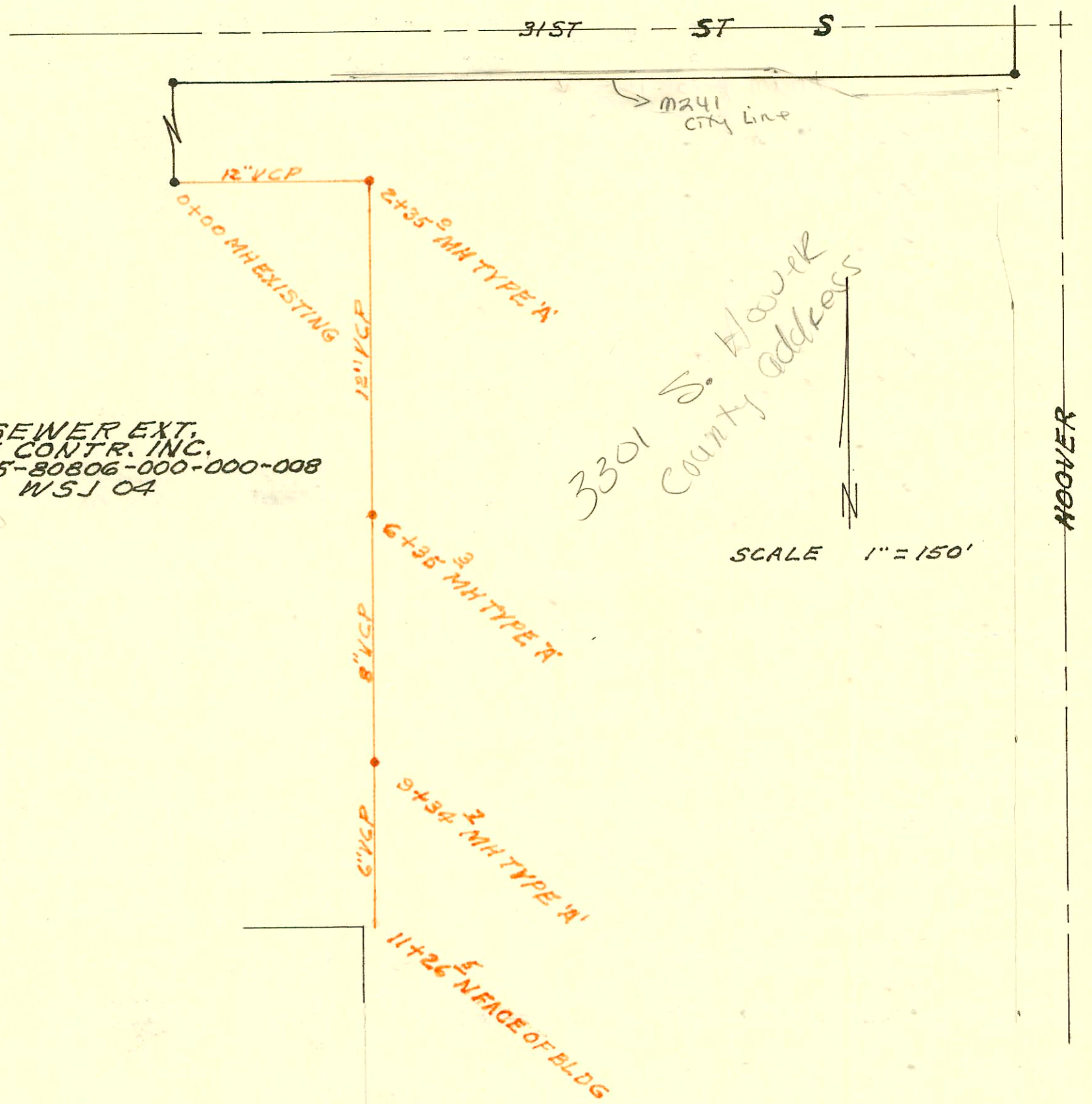


DAVIS MFG. SAN SEWER EXT.
BUILT BY: UTILITY CONTR. INC.
PROJ. NO 468-76-245-80806-000-008
BOOKED 10-12-79 WSJ 04

on map



CONSTRUCTION RECORD						SERVICE RECORD						
STATION	ELEVATION		Depth	MANHOLE	4-INCH "Y" BRANCHES		No. of Permit		House Number		DATE OF PERMITS	
	Ground	Grade			North West	South East	North West	South East	North West	South East	North West	South East
LAT 29 MAIN 17 WIS (CONT'D)												
4+00	162.5	153.84	8.7		4+22.2 ²		073274		8307 E Harry - B		7-27-79	
5+00	163.6	154.84	8.8		4+70.8 ²		073273		8307 E Harry - A		7-27-79	
6+00	165.0	155.84	9.2		5+41.1 ²		073272		8307 E Harry - B		7-27-79	
7+00	167.2	156.84	10.4		5+91.5 ²		073271		8307 E Harry - A		7-27-79	
8+00	166.0	156.96	9.0	7+11.5	7+16.2 ²		073270		8305 E Harry - B		7-27-79	
9+00	167.6	158.43	9.2		7+68.1 ²		073269		8305 E Harry - A		7-27-79	
10+00	167.5	162.21	5.3	10+11.9	8+32.0 ²		073268		8305 E Harry - B		7-27-79	
	167.9	160.11	7.8		8+85.9 ²		073267		8303 E Harry - A		7-27-79	
	168.3	161.99	6.3		9+54.6 ²		073266		8301 E Harry - B		7-27-79	
	167.5	162.21	5.3		10+07.3 ²		073265		8301 E Harry - A		7-27-79	
LATERAL 30 MAIN 17 WAR INDUSTRIES SEWER												
0+00	160.0	154.12	5.9	2+17.2 ²								
1+00	161.4	154.72	6.7									
2+00	163.8	155.32	8.5									
3+00	166.1	155.92	10.2		3+34.8 ²		9425		1717 (15) Cypress		10-12-83	
4+00	166.4	156.33	10.1	3+27.8	8" STUB S 3+63.8 ²		9620		1717 (16) Cypress		11-7-83	
5+00	166.2	157.19	9.0		4+13.8 ²		073659		8905 E Harry		7-27-79	
6+00	168.2	157.69	10.5		5+35.0 ²		8142		1717 (15) Cypress		5-13-83	
7+00	168.2	157.81	10.4	6+23.3	5+36.7 ²		8141		1717 (12) Cypress		5-13-83	
8+00	168.5	158.69	9.8		6+30.3 ²		073661		8907 E Harry		7-27-80	
9+00	168.5	159.19	9.3		6+32.3 ²		073663		9001 E Harry		7-27-80	
10+00	168.7	160.73	8.0		7+82.5 ²		12494		1717 (10) Cypress		11-8-84	
11+00	168.5	159.37	9.2	9+24.0	9+11.0 ²		073662		9003 E Harry		7-27-79	
	168.5	159.36	9.1		9+13.0 ²		073660		9005 E Harry		7-27-79	
10+00	168.7	160.73	8.0									
11+00	168.8	162.53	6.3	11+24.0	11+18.2		073658	10475	9007 E Harry	1717 (10) Cypress	7-27-79	3-13-84
	168.8	162.96	5.8									
DAVIS MFG. SAN SEWER EXT.												
0+00	97.7	87.40	10.3	0+00 EXISTING								
1+00	97.8	87.60	10.2									
2+00	97.7	87.80	9.9									
	97.6	87.87	9.3	2+35.0								
	97.6	87.97	9.6									
3+00	97.9	88.10	9.8									
4+00	98.3	88.30	10.0									
5+00	98.7	88.50	10.2									
6+00	98.7	88.70	10.0									
	98.6	88.77	9.8	6+35.3								
	98.6	89.10	9.5									
7+00	98.5	89.36	9.1									
8+00	98.5	89.76	8.7									
9+00	98.5	90.16	8.3									
	98.4	90.30	8.1	9+34.7								
	98.4	90.63	7.8									

CONT'D NEXT PAGE

#2538 9-20-83 3301 S. Hoover - Dandlinger - NK for Bldg add (6" PVC 40 1/4" Fall) (M.H. Tap 10/1/83)

10/1/83 Laid sewer on 1/2" w/ Lacer - building does not have a mud + oil trap. 7-6" C.O.

#2735 9/14/84 3301 S. Hoover - NK - Prot. Mah Contr - addition - Inspector (HST) said he found in INSPECTION. New found.