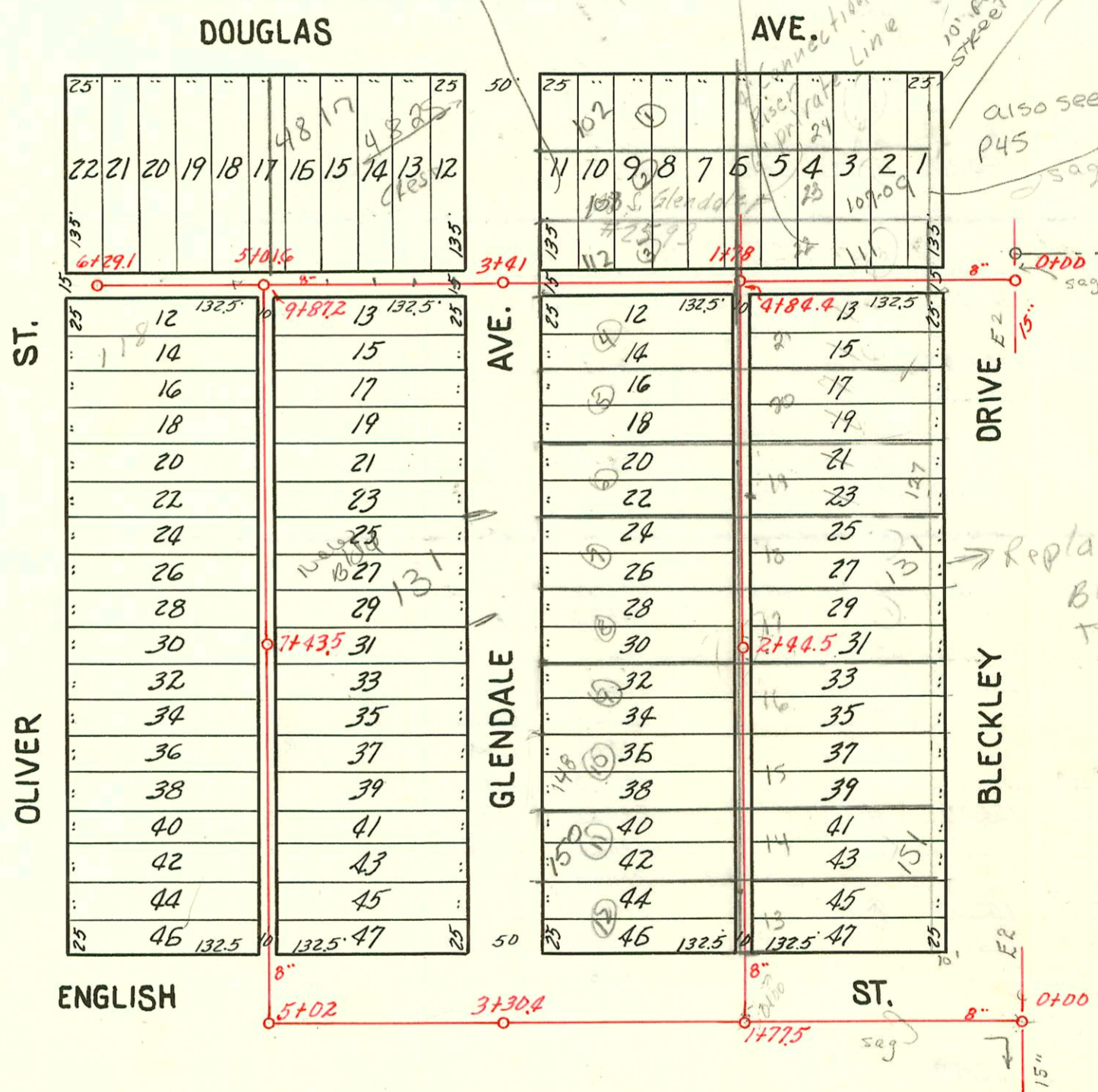


102 S. Glendale and 108 S. Glendale Together on private line and tap to M 4 1178 (11370)  
 112 S. Glendale side of main at taps on scum M 4 3141. Refer to 11309 BSA

3129/01 111 S. Bleckley Private easement granted to 107-109 S. Bleckley (Lot 23) to maintain exist serv. line across front of Lot 23

See copy of plat in book

105 & 107 Bleckley Tap at 1178 M 4 3141  
 111 S. Bleckley Tap at 28' 5" of M 4 1178  
 497 119 Douglas Tap at 132' E of M 4 1178  
 1113/09 BSA



Replated into Bleckley Terrace Add with 5' util. Fuse in Rear of each Lot. No edge maintained FOR SP. of Lots 3 and 22

Scale 1"=100'

PART OF LAT. J, DIST. 6, S. S. 12  
 DOBSON-HUMPHREY-1930

# 116475 Seal off 131 S. Glendale - Al Henning - 10-10-66

- # 2593 6" private line - 108 S. Glendale - George Wohsehtapel - 8-21-20
- # 63 Tap at 5788.6 - 118 S. Oliver - 9-11-41 - Chester Davidson
- # 1645 - 131 S. Glendale - 4-30-42 - Simmons p lly. Co.

CONSTRUCTION RECORD						SERVICE RECORD							
STATION	ELEVATION		Depth	MANHOLE	4-INCH "Y" BRANCHES		No. of Permit		House Number		DATE OF PERMITS		
	Ground	Grade			North West	South East	North West	South East	North West	South East	North West	South East	
0+0	159.3	151.50	7.8	0+0									
1+0	158.2	151.70	6.5	1+77.5									
2+0	159.5	151.90	7.6										
3+0	160.4	152.10	8.3	3+30.4									
4+0	160.3	152.30	8.0										
5+0	162.7	152.50	10.2	5+02	5+38.5	5+35.5	#279	#1097	4806 E. English	4815-13-2002	8-31-72	10-4-48	
					+56.5	+63.5			Oliver	English	8-31-72		
					+88	+85							
6+00	162.16	152.80	9.4		6+15.6	6+12.6	#1877	#286	150 S. Oliver	151 S. Glendale	6-23-70	10-5-41	
					+39.4	+36.4							
					+63.2	+60.2	#1895	#3266	146 S. Oliver	147 S. Glendale	6-23-70	10-10-66	
					+89.7	+86.7					10-12-39	4-1-41	
7+0	162.43	153.0	9.4	7+43.5	7+15.0	7+12.0	#2133		140 S. Oliver	131 Glendale	10-20-64	8-25-41	
					7+88	7+85	#2860	#3010	118 S. Oliver	123 S. Glendale	2-17-65	12-28-01	
					+41	+38					10-10-66	12-30-40	
					+66.3	+63.3							
					+90.4	+87.4							
9+0	164.70	153.40	11.3		9+14.6	9+11.6	#1423		118 S. Oliver		2-13-47		
					+38.9	+35.9							
9+87.2	165.70	153.57	12.1	9+87.2	+66.5	+63.5							
0+0	158.4	152.00	6.4	0+0	0+43.5	0+40.5		#2586	156 S. Glendale	157 S. Blackley	3-19-40		
					+71	0+58	#255		150 S. R. Glendale	151 S. Blackley	12-9-41	3-25-41	
					+93.8	0+92.8	#2002-DATA	#3224			10-4-42		
1+0	160.36	152.20	8.2		1+22.7	1+19.7		#2528	148 S. Glendale	143 S. Blackley	7-26-40	4-26-41	
					+46.8	+43.8		#3387					
					+71.8	+68.8		#3872	142 S. Glendale	141 S. Blackley	7-16-41	4-26-41	
					+95.1	+92.1		#3236					
2+0	161.02	152.40	8.6	2+44.5	2+20	2+17	#2468	#1723	136 S. Glendale	137 S. Blackley	7-2-40	7-19-39	
					+37.5	+34.5		#88	94-161a-b-7	132 S. Glendale	131 S. Blackley	3-16-37	5-2-40
					+64.4	+61.4		#2238			10-3-94		
					+89.7	+86.7		#88					
3+0	161.27	152.60	8.7		3+14	3+11	#39	#2289	128 S. Glendale	127 S. Blackley	3-18-37	5-2-40	
					+40.4	+37.4							
					+65	+62		#132	122 S. Glendale	123 S. Blackley	4-6-37	5-2-40	
					+88.5	+85.5		#2290					
4+0	160.76	152.80	8.0		4+15.7	4+12.7	#133		118 S. Glendale		4-6-37		
					+39.9	+36.9		#489		117 S. Blackley Dr.		10-27-41	
4+84.4	159.48	153.0	6.5	4+84.4	4+66.9	4+63.9							
0+0	159.95	153.00	7.0	0+0	0+50	-	1779		4717 E. Douglas		8-17-39		
					+74.3	-							
1+0	159.22	153.20	6.0		+98	-							
				1+78	1+25	-	Top 3290		111 S. Blackley		4-9-41		
2+0	159.60	153.40	6.2		1+89.9	-							
					+99.9	-							
					2+24	-							
					+49.5	-							
					+75.5	-							
3+0	160.36	153.60	6.8		2+98.4	-							
				3+41	3+26	-							
					+74.8	-	#1864-7		4325 E. Douglas		10-23-47	6-25-42	
4+0	163.06	153.80	9.26		4+01.5	-	#2146						
					+26.4	-							
					+153.6	-	#1290		4817 E. Douglas		5-14-50		
					+77.8	-							
5+0	165.40	154.00	11.4		4+94.7	-	#3020		4811 E. Douglas		5-3-41		
				5+01.6	5+25	-	#343		4817 E. Douglas		7-12-37		
					+49.5	-							
					+73	-							
6+0	166.36	154.20	12.2		5+97.5	-							
6+29.1	166.25	154.26	12.0	6+29.1	6+21.7	-							

#250 - Tap - 110 S. Glendale 5-25-37 - W.W. Pray  
 #2009 Tap - 405 S. Blackley Dr. 12-5-39, R.H. Anderson.  
 #985 - Tap - 4825 E. Douglas - 7-22-49 - Brodie Plng. Co.