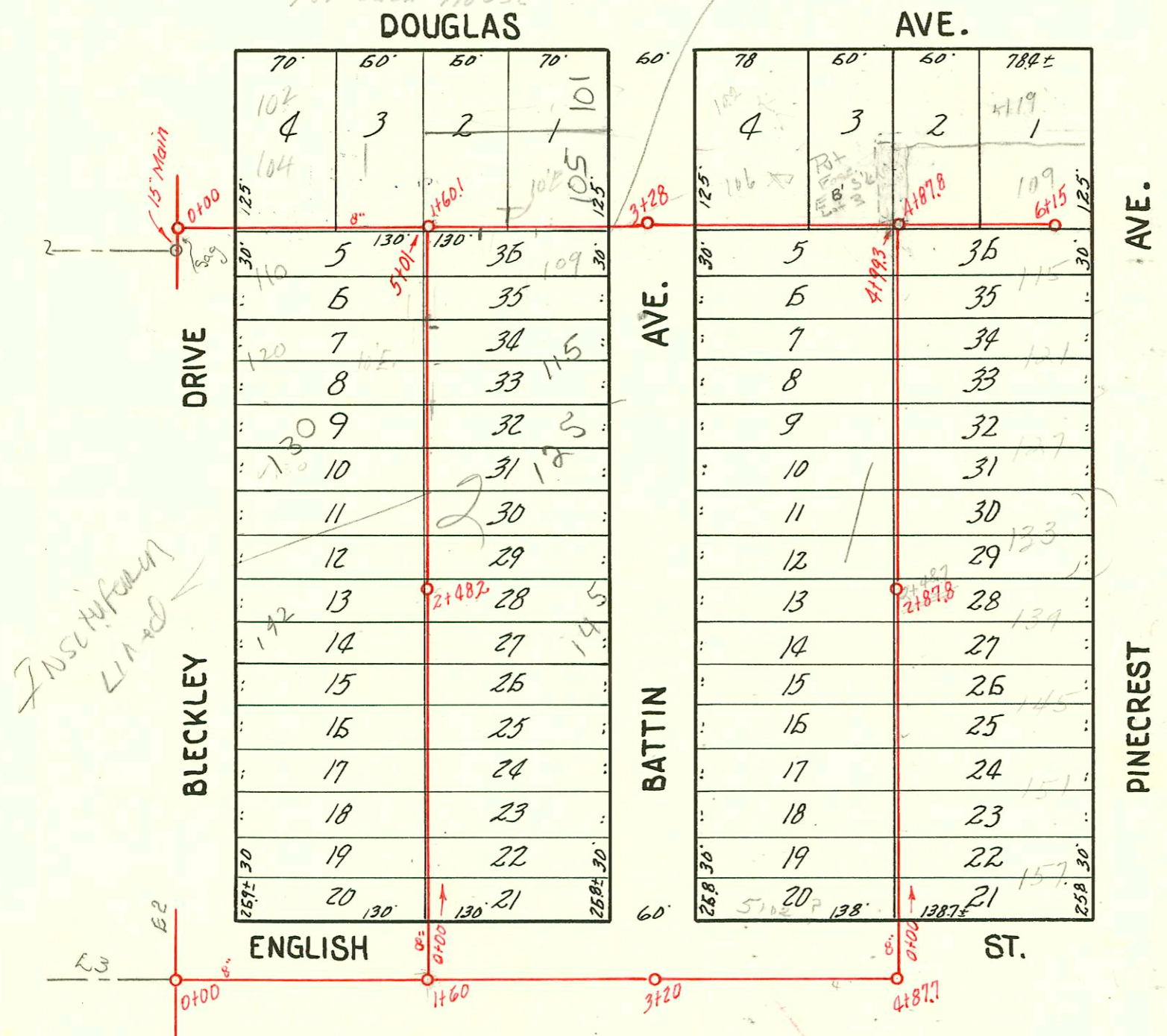


for 11/22/20  
262 0473 )  
1 = 100

NOTE:  
Must have separate Conn  
for each house

INSULATED  
LINE



- 2002-01579 6/5/02 115 S Battin - Wichita Exc - Reconnect 96' S of MH 5101 (4105) 4" PVC, CITY TAP, 4" Preeco, 1V45 1H22, lower end
- Rep-2000-02643-12/1/00-130 S Bleckley - Bowers- 4" SCH40, WYE 98' N of MH at 48.2 (3+46.2) Replaced Lower 40' of Sewer - 1 Twin co, 1V22, 2 Kickouts, 2V45, 3 Fernco to clay, 1 4" WYE
- Rep-2000-01935-104 S Bleckley Dr-8/3/00-ASAP Plug- 4" SCH40, City Repair, 4" Preeco 106.9' E of MH 0100 (1+06.9) 1-Fernco to clay, 1H22, 1V45

- Tap-#259-122 S. Bleckley Dr.
- Tap-#260-101 S. Battin.
- Tap-#261-102 S. Battin
- Tap-262-101 S. Pinecrest
- Tap-263-115 S. Battin
- Tap-264-175 S. Battin
- #2796-Tap-150 S. Battin-12-12-49 - C.R. Alexander.
- #3641-Tap-135 S. Battin-12-31-52 - Simmons Pldg. Co.
- S.O.#C70714 - 5119 E. Douglas - 2-27-19 McElhenny - see relocation

- #264-Tap-109 S. Pinecrest-6-1-37 - L.A. Creed
- #2479-Tap-115 S. Pinecrest-7-5-40 Geo. Wahlsehlepel (Tap at 5+68.3)
- #3516-101 S Pinecrest-5-22-41 R. H. Anderson
- #3798 Private line-127 S. Pinecrest-7-11-41 Ch. C. Hedrick

PART OF LAT. J, DIST. 6, S. S. 12  
DOBSON-HUMPHREY - 1930

CONSTRUCTION RECORD							SERVICE RECORD					
STATION	ELEVATION		Depth	MANHOLE	4-INCH "Y" BRANCHES		No. of Permit		House Number		DATE OF PERMITS	
	Ground	Grade			North West	South East	North West	South East	North West	South East	North West	South East
0+0	161.70	153.0	8.7	0+0	0+31.7	-						
					+58.5	-						
					+85.0	-						
1+0	163.50	155.0	8.5		1+14.4	-						
					+41.3	-						
					1+60.1	-						
2+0	166.5	157.0	9.5		1+98.7	-						
					2+25.3	-						
					+52.5	-						
3+0	169.2	159.0	10.2		+82.7	-						
					3+51.7	-						
					3+79.2	-						
4+0	171.20	159.70	11.5		4+05.2	-	#413		106 S. Battin		10-12-36	
					4+35.4	-						
					4+57.0	-	C29831		102 S. Battin		1-5-72	
5+0	172.0	159.90	12.1	4+87.8	4+76.6	-	C40915		519 E. Douglas		3-29-79	
					5+20.2	-						
					5+45	-						
					5+72.2	-						
5+0	172.10	160.10	12.0		5+98	-						
6+15	172.20	160.20	12.0	6+15	6+12	-						
0+0	159.7	151.50	8.2	0+0	-	-						
1+0	161.3	151.70	9.8		-	-						
					1+60	-						
2+0	162.6	154.55	8.05		-	-						
3+0	163.9	155.05	8.85		-	-						
					3+20	-						
4+0	166.3	155.55	10.75		4+72.9	-	2630		5102 E. English		2-17-81	
4+87.7	168.0	156.00	12.0	4+87.7	-	-						
0+0	162.6	152.0	10.6	0+0	0+27.8	0+24.8						
					0+52.4	0+49.4						
1+0	163.5	152.10	11.4		1+03	1+00	#141 #725		190 S. Bleckley Dr. Battin		5-6-35	3-7-38
					1+26.8	1+23.8	#29034		170 S. Bleckley Dr. Battin		5-16-45	
					1+51.4	1+48.4	#675 #255		160 S. Bleckley Dr. Battin		1-5-38	7-7-36
					1+77.5	1+74.5						
2+0	165.10	152.20	12.9		2+01.8	1+98.8	#442 #15		2000-02820 150 S. Bleckley Dr. Battin		9-1-37	2-27-36
					2+25.6	2+22.6						
					2+48.2	2+41.2	#92		140 S. Bleckley Dr. Battin		3-18-37	
3+0	165.3	152.30	13.0		3+20.5	3+17.5	#223 #15		130 S. R. 125 S. Bleckley Dr. Battin		5-13-37	2-2-7-36
					3+46.5	3+43.5			see next pg			
					3+71.0	3+68.0	#140 #18		120 S. Bleckley Dr. Battin		5-6-36	2-27-36
					3+94.8	3+91.8			see next for reconnect			
4+0	165.4	152.40	13.0		4+18.7	4+15.7						
					4+45.1	4+42.1						
5+0	165.5	152.50	13.0	5+01								
0+0	167.2	156.10	11.1	0+0	0+28.1	0+25.1	#1225		157 S. Pinercrest		4-6-42	
					0+51.2	0+48.2	#3770		151 S. Pinercrest		7-8-41	
					0+76.3	0+73.3	#48		170 S. Battin		2-24-37	
1+0	167.4	156.65	10.75		1+09.3	1+01.3	#196		150 S. Battin		4-29-37	
					1+28.3	1+25.3	1434		145 S. Pinercrest		7-12-61	
					1+51.5	1+48.5	#335		139 S. Pinercrest		10-13-41	
					1+78.9	1+75.9	#437		150 S. Battin			
2+0	168.0	157.15	10.85		2+03.8	2+00.8	#480 13662		140 S. R. 133 S. Battin		11-9-36	12-2-60
					2+27.8	2+24.8	#286		133 S. Battin		6-10-37	
					2+81.3	2+78.3	#3761		137 S. Pinercrest		7-1-41	
					3+06.4	3+03.4						
					3+30.1	3+27.1						
					3+56.9	3+53.9						
					3+81.1	3+78.1	#149 #127		120 S. Battin		7-11-35	4-5-37
4+0	169.8	158.95	10.85		4+05.3	4+02.3			121 S. Pinercrest			
					4+31.9	4+28.9						
5+0	172.1	158.85	12.25	4+99.3	4+56.0	4+53.0						

#189 Tap - 110 S. Battin - 8-2-35 - L.A. Creed.  
 #20 Tap - 109 S. Battin - 2-28-36 - L.A. Creed. (2+14 = 114' w of MH 3+28 PER ENCLOSURE)  
 #166 Tap - 201 S. Battin - 4-17-36 - C. C. McLaughlin (100 Special Fee paid 4-17-36)  
 #335 Tap - 180 S. Battin - 8-24-35 - L.A. Creed  
 #47 Tap - 110 S. Bleckley Dr. - 2-24-27 - L.A. Creed. 3/31/00 - ASAP PLRG - 4" SCH 40 CITY Rep 4" Predeo 1106.9  
 #10615-TAP - 105 S. Battin Swimming Pool - Joe's Sewer Service - 9-23-68 (Tap 1+86.1)  
 #9187-TAP - 170 S. Bleckley - John D. Stewart - 5-24-73 (1+17)

(Insituform)  
 -city rep 4" Predeo  
 115.6' w of MH 3+28  
 (2+12.4) Fernco  
 2022