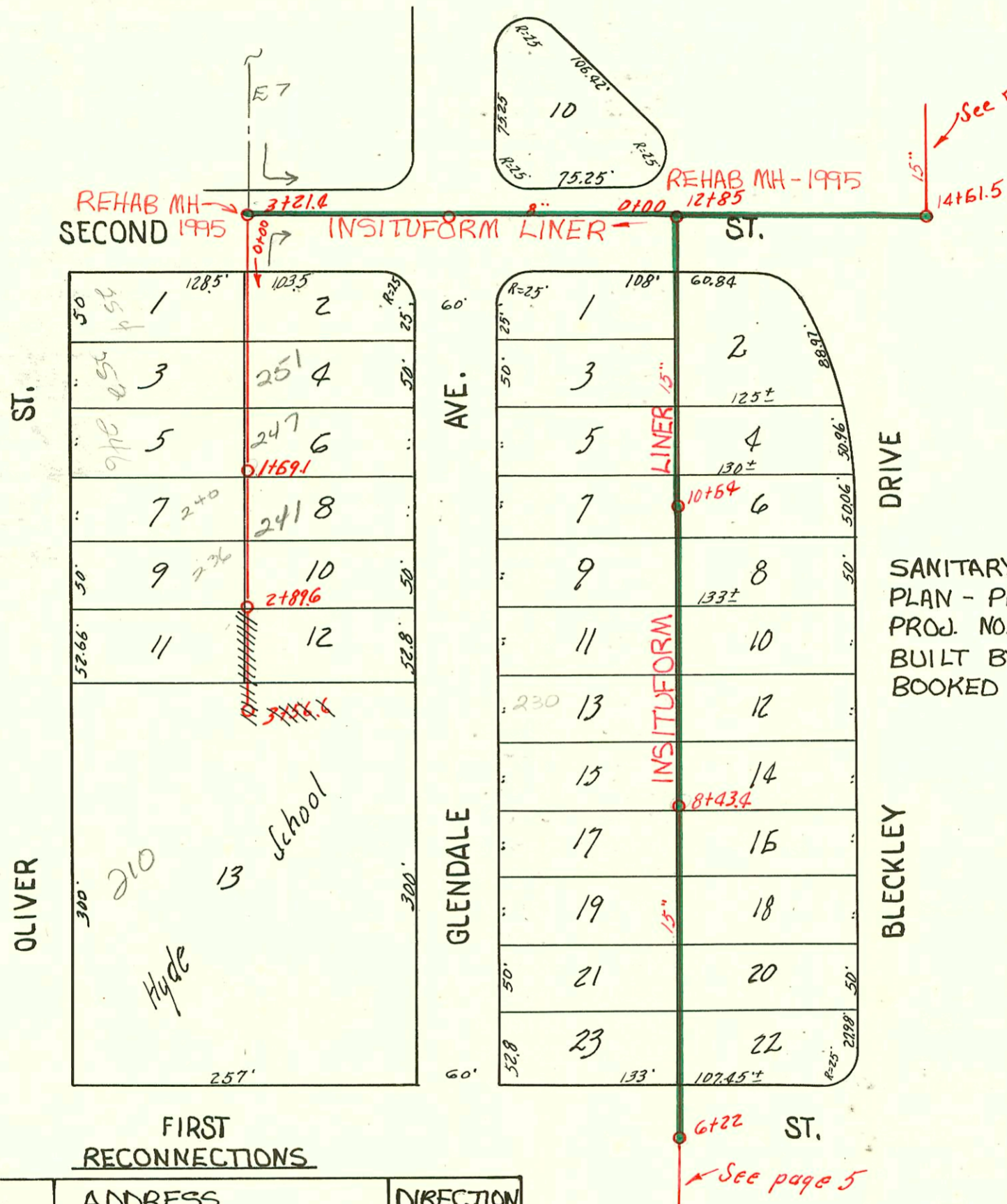


SANITARY SEWER RESPONSE PLAN
 PHASE IA
 PROJ. NO. 468-82420 (623124)
 BUILT BY INSITUFORM PLAINS, INC.
 BOOKED 3-1-96 FROM AS BUILTS



SANITARY SEWER RESPONSE
 PLAN - PHASE IB
 PROJ. NO. - 468-82542 (621193)
 BUILT BY INSITUFORM PLAINS, INC.
 BOOKED 10-15-96 FROM AS BUILTS

FIRST RECONNECTIONS

STA.	ADDRESS	DIRECTION
8+38	220 Glendale	West
8+00.4	214 Glendale	West
7+97.7	211 Bleckley	East
7+52.3	208 Glendale	West
7+49.6	207 Bleckley	East
6+77	202 Glendale	West
6+74	201 Bleckley	East

RECONNECTIONS

STA.	ADDRESS	DIRECTION
12+15.8	256 Glendale	West
12+14	257 Bleckley	East
11+63.8	252 Glendale	West
11+36.5	249 Bleckley	East
11+15.4	246 Glendale	West
10+62	242 Glendale	West
10+58.6	243 Bleckley	East
10+40.6	236 Glendale	West
10+14.8	233 Bleckley	East
9+63.7	230 Glendale	West
9+63.6	229 Bleckley	East
9+16.3	226 Glendale	West
9+13.7	225 Bleckley	East
8+40.2	219 Bleckley	East

PART OF **LAT. J, DIST. 6, S. S. 12**
 DOBSON-HUMPHREY-1930

CONSTRUCTION RECORD							SERVICE RECORD					
STATION	ELEVATION		Depth	MANHOLE	4-INCH "Y" BRANCHES		No. of Permit		House Number		DATE OF PERMITS	
	Ground	Grade			North West	South East	North West	South East	North West	South East	North West	South East
6+0	154.33	155.74	8.6	6+22	6+67.1	6+64.6	#968	#648	202 N. Glendale	201 N. Bleckley Dr.	7-9-38	12-22-37
7+0	164.53	156.09	8.4		6+91.2 7+15.5 7+42.8 7+66.5	6+88.7 7+13.0 7+40.3 7+64.0		#59		207 N. Bleckley Dr.		3-8-37
8+0	162.91	156.44	6.5		7+19.7 8+12.5 8+34.2	7+89.2 8+10 8+31.7	#55	#265	208 N. Glendale	213 N. Bleckley Dr.	7-20-42	11-27-42
				8+43.4	8+61.5 8+85.7	8+59 8+83.2	#2387	#2175	220 N. Glendale	219 N. Bleckley	7-22-42	3-28-40
9+0	163.91	156.79	7.1		9+09.5 9+35 9+60.3	9+07 9+33.5 9+57.8	#57	#2276	226 N. Glendale	225 N. Bleckley Dr.	11-27-42	4-29-40
					9+84.2 10+11.9	9+81.7 10+09.4	#2103	#2523	230 N. Glendale	229 N. Bleckley	6-25-42	7-24-40
10+0	164.71	157.14	7.6		10+35.3 10+57.2	10+33.8 10+54.7	#1609		233 N. Bleckley			5-31-39
				10+64	10+84.3 11+11.3	10+81.8 11+08.8	#219	#1390	236 N. Glendale	243 N. Bleckley Dr.	5-12-37	2-10-37
11+0	164.41	157.49	6.9		11+35.5 11+60.1	11+33 11+57.6	#473	#1298	242 N. Glendale	249 N. Bleckley	11-5-35	1-11-39
					11+87.3 12+13.7	11+84.8 12+11.2	#427		252 N. Glendale		10-16-35	
12+0	165.51	157.84	7.7		12+40.5	12+38	#280	#321	256 N. Glendale	261 N. Bleckley Dr.	7-15-36	8-12-35
13+0	164.50	158.19	6.3	12+85								
14+0	163.80	158.54	5.3	14+61.5								
0+0	168.89	150.40	8.5	0+0	0+33.8 0+58.6	0+30.8 0+55.6	#377	#192	254 N. Oliver	257 N. Glendale	6-26-31	8-9-35
1+0	169.09	160.60	8.5		0+76.4 1+03.2 1+33.9	0+73.4 1+00.2 1+24.9	#497	#502	258 N. Oliver	245 N. Glendale	11-10-31	10-1-37
				1+69.1	1+51.8 1+77.2	1+48.8 1+75.2	#45733	#525	246 N. Oliver	247 N. Glendale	12-28-66	7-15-44
2+0	170.0	150.80	9.2		2+03 2+27 2+54.1	2+0 2+24 2+51.1	#1370	#539	240 N. Oliver	241 N. Glendale	7-29-31	3-21-33
					2+78.5 3+02.3	2+75.5 2+99.3	#106		236 N. Oliver		12-31-36	12-4-35
3+0	170.79	151.00	9.8		3+26.5 3+47.8	3+23.5 3+44.8	#2000-01994		210 R. Oliver		9-7-00	9-23-79
2+89.6	159.69	151.10	8.6	2+89.6			#1508		Hyde School	Below	11-29-48	
0+0	164.87	159.25	5.6	0+0								
1+0	165.57	159.45	6.1									
2+0	167.19	159.65	7.5									
3+0	167.39	159.85	7.5									
3+21.4	167.99	159.89	8.1									

Hyde School
 2000-01993- 9/1/00- 210 N Oliver - Am Bleck - 4" sch 40 Predco 0' from New MH - 17WIN CO, 2045
 Port School
 2000-01994- 9/1/00- 210 N Oliver - Am Bleck - 4" sch 40 Predco 2' from New MH - 17WIN CO, 2045
 2003-00733- 3/24/03- 241 N Glendale - Redd Rootr - Predco Saddle 30' S of MH 1169.1 (1799.1) Replaced 6' low end
 1022, 1422, 4" 40 PVC 1/4" fall