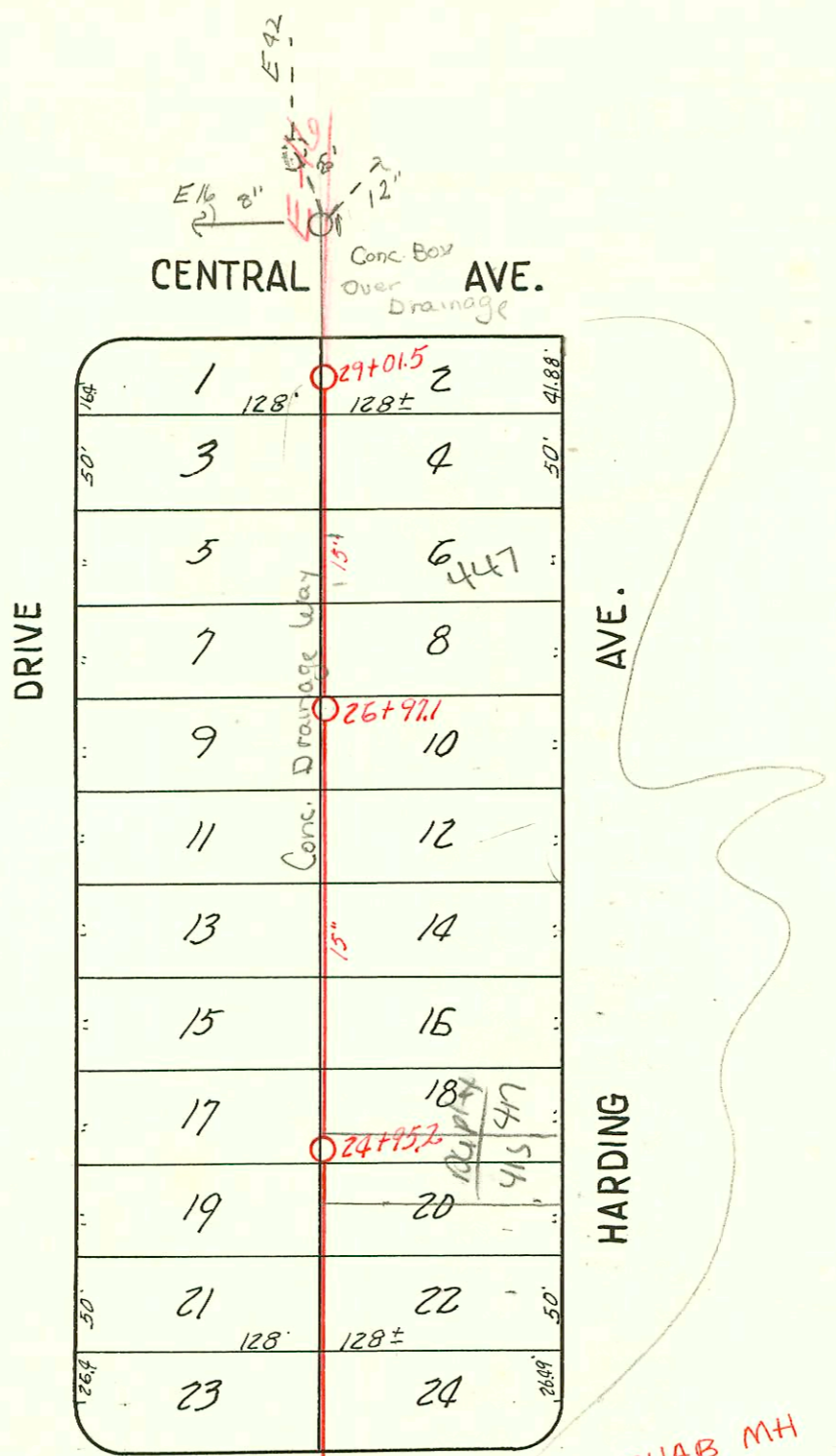


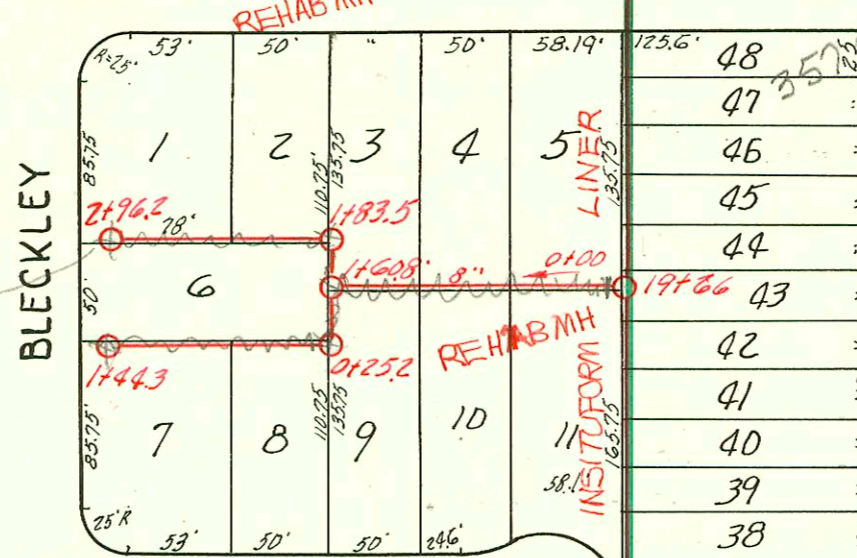


SCALE: 1" = 100'



Trap req'd
be caused
15" main

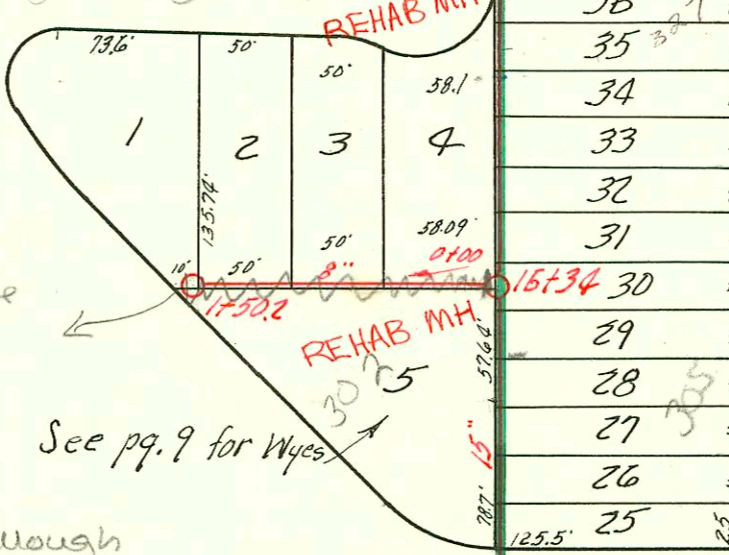
THIRD ST. REHAB MH 22+90 15" REHAB MH 21+25.5



Sewer Lines
Abandoned
per field
1-3-95

Sewer Lin +
abandoned

REINHARDT PL. REHAB MH 17+99.5



See pg. 9 for Wyes

15" 14+51.5 SECOND ST.

RECONNECTIONS

STA.	ADDRESS	DIRECTION
20+76	357 N. Coronado	East below
20+75.3	353 N. Coronado	East
19+77.4	347 N. Coronado	East
18+73.1	343 N. Coronado	East
18+21.6	331 N. Coronado	East
17+23.5	321 N. Coronado	East
16+96.8	317 N. Coronado	East
16+75.3	302 N. Bleckley	West
16+22.3	311 N. Coronado	East
15+96.6	305 N. Coronado	East
15+47.9	301 N. Coronado	East

Trap req'd
Be caused
15" main

2004-00176-1/20/04- 447 N Harding- McCullough
4" PVC, ITWIN CO, Newhouse trap, 1H22
upper end repair

2003-00228- 357 Coronado Wichita Exc Predco by city
49.6' S of MH 21+25.5 (20+75.9) 4V45 (Running trap)
1V45

2003-02000- 7/31/03- 415 Harding- Wichita Exc- From clay @
house, TWIN CO TO Sch 40 PVC to clay hub at WPL toward
alley (water way)

See page 5

1993 SANITARY SEWER REHABILITATION
PROGRAM - PHASE I
PROJ. NO. 468-82348 (637000)
BUILT BY INSITUFORM PLAINS INC.
BOOKED 5-12-94 FROM AS BUILTS

CONSTRUCTION RECORD

SERVICE RECORD

STATION	ELEVATION		Depth	MANHOLE	4-INCH "Y" BRANCHES		No. of Permit		House Number		DATE OF PERMITS	
	Ground	Grade			North West	South East	North West	South East	North West	South East	North West	South East
14+0	163.80	158.54	5.3	14+51.5								
15+0	168.00	158.89	9.1		15+35.6	15+33.1	#1339		301	Coronado Pl.		2-6-39
					15+39	15+56.5						
					15+85.3	15+82.8	#352	#79	302 N. Bleckley Dr.	305 Coronado Pl.	9-3-35	4-22-35
16+0	165.94	159.24	6.7		15+11.5	15+09.1	2740		311	Coronado Pl.		10-7-40
				16+34.4	15+38.4	15+35.9						
					15+52	15+59.5						
					15+87.1	15+84.5	#2033		317	Coronado Pl.		12-12-39
17+0	167.94	159.59	8.3		17+14.7	17+12.2						
					17+39	17+35.5	22484		327 E	Coronado Pl.		1-26-89
					17+53.1	17+50.6	1698					7-7-39
18+0	158.64	159.94	8.7	17+99.5	17+90.6	17+88.1			331	Coronado Pl.		9-15-41
					18+14.4	18+11.9	#93					
					18+38.9	18+35.4	#2517		343	Coronado		9-29-50
					18+56.2	18+53.7						
					18+90.7	18+88.2						
19+0	159.18	160.29	8.9	19+66	19+15.5	19+13			347	Coronado		3-20-50
					19+73.8	19+71.3	#254					
20+0	159.18	160.64	8.5		19+98.5	19+96			353	Coronado		4-6-43
					20+22.9	20+20.4	#398					
					20+47	20+44.5						
					20+74.2	20+71.7	2003-20022		357 R	Coronado	see next pg	1-24-43
21+0	170.78	160.99	9.8		20+98.7	20+96.2	#397					
				21+25.5	20+28	21+25.5						
22+0	159.78	161.34	8.4	22+90								
23+0	158.58	161.69	6.9		23+39.5	23+37	#1009	#2804	402 N. Bleckley Dr.	401-403 Harding	2-9-42	3-12-45
					23+53.8	23+51.3						
					23+88.3	23+85.8	#626		408-10	Bleckley Dr.		6-1-43
24+0	159.45	162.04	7.4		24+12.7	24+10.2						
					24+39.9	24+37.4	#2805		407-409	Harding		3-12-45
					24+53.8	24+51.3	2003/2000					
				24+95.2	24+87.9	24+85.4	#627	#2806	412-16 N. Bleckley Dr.	415-417 Harding	R see next pg	7-31-43
25+0	158.76	162.39	6.4		25+14.1	25+11.6						
					25+41	25+38.5	#628	#2807	420-22 N. Bleckley Dr.	421-423 Harding		8-1-43
					25+52.7	25+50.2						
					25+87	25+84.5						
26+0	158.86	162.74	6.1		26+14	26+11.5						
					26+38	26+35.5	#2810	#2808	436 N. Bleckley	427-429 Harding		7-14-42
					26+52	26+59.5						
				26+97.1	26+90.1	26+87.6	#2809		433-435	Harding		3-12-45
27+0	159.26	163.09	6.3		27+14.8	27+12.3						
					27+39.2	27+36.7	#2311	#2810	442 N. Bleckley	441-443 Harding		7-14-42
					27+56.8	27+54.3						
					27+90.5	27+88	#1115	#2811	450 N. Bleckley	447-449 Harding	see Next pg	3-9-42
28+0	158.56	153.44	5.1		28+18.6	28+16.1						
					28+43.1	28+40.6	#2812		455-457	Harding		3-12-45
					28+58.1	28+55.6						
					28+98.8	28+96.3	#1114		459 N. Bleckley Dr.			3-4-42
29+01.5	159.50	163.80	5.7	29+01.5								
0+0	158.70	161.70	7.0	0+0	0+43.6	0+40.6						
					0+67.6	0+64.6						
					0+91.4	0+88.4						
1+0	158.8	161.90	6.9		1+18.6	1+15.6						
				1+60.8	1+42.2	1+39.2						
					1+73.8	-						
2+0	158.10	162.10	6.0	1+83.5	1+93.2	-						
					2+14	-						
					2+35	-						
					2+59	-						
2+96.2	156.4	152.30	4.1	2+96.2	2+80.4	-						
0+0	158.20	162.22	5.98	0+0	0+13.6	-						
				0+25.2	-	0+34.2						
					-	0+55.2						
					-	0+76						
1+0	167.2	162.42	4.8		-	0+99.7						
1+44.3	156.6	152.51	4.1	1+44.3	-	1+20.5						

NOTE: This sewer line is covered by a concrete drain 20" wide. Those Wyes marked by a red cross have been stubbed out to edge of drain and located by a cross cut into the conc. coping of the drain directly above stub.