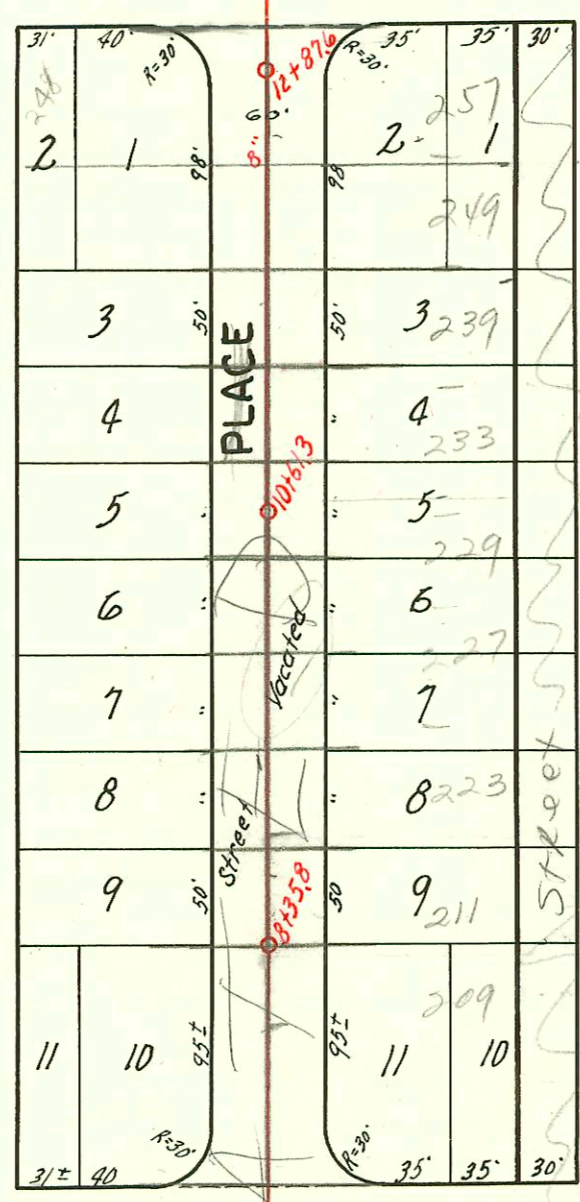


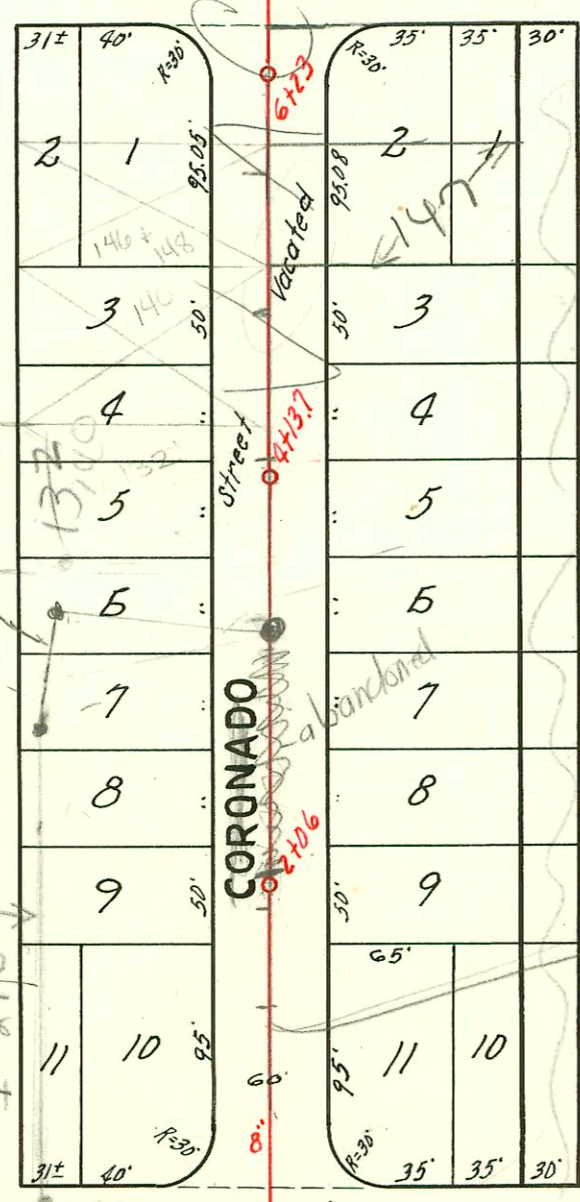
NA

H

SECOND ST.



FIRST ST.



DOUGLAS AVE.

City Main
I 2767
I 269

County of Platte
County of Platte
Ord. # 11-449
3-11-1935
Ord. # 12-146
May 15, 1939
vacated E 1/2 + 20' of Coronado Place
from N. E. 1/4 of Sec. 2 of T. 2 N. R. 10 W.
No sewer examined retained -
City Clerk

This is privately
maint. & latered
from Church Bldg
to Mt. St. City sewer
was rerouted - see I 276

CONSTRUCTION RECORD

SERVICE RECORD

STATION	ELEVATION		Depth	MANHOLE	4-INCH "Y" BRANCHES		No. of Permit		House Number		DATE OF PERMITS			
	Ground	Grade			North West	South East	North West	South East	North West	South East	North West	South East	North West	South East
0+0	165.08	156.00	9.1	0+0	0+18	0+15								
					0+40.8	0+37.8		#1625		101 N. 5th Battin		7-29-39 5-29-39		
					0+54.5	0+51.5				107 N. 5th Battin		7-24-39 9-12-39		
1+0	165.28	156.35	8.9		0+91.8	0+88.8		#4	109 N. Bleckley 5012 E. Douglas			1-9-35		
					1+16	1+13		#108799	#86090	111 N. Battin		12-12-46		
					1+39.8	1+36.8		#1795	#86091	121 N. Battin		7-29-66 8-23-39		
					1+57	1+54		#1519	#7757	5003 E. Douglas 121 N. Coronado		7-20-36 8-7-39		
2+0	166.08	156.70	9.4	2+06	1+91	1+88		#419				8-3-31		
					2+15.5	2+12.5			#86092	125 N. Battin		7-29-66 11-20-39		
					2+42.5	2+39.5		#86093	#1981	126 N. Bleckley Dr.		7-29-66 11-13-37		
					2+56.5	2+53.5		#602						
					2+90.8	2+87.8								
3+0	166.88	157.05	9.8		3+15.5	3+12.5		#1952	#1425	130 N. Bleckley	135 N. Battin	11-6-39	4-29-39	
					3+39	3+36								
					3+56	3+53								
					3+90	3+87			#1332	137 N. Battin			2-1-39	
4+0	167.08	157.40	9.7	4+13.7	4+20.5	4+17.5		#337		142 N. Bleckley		7-7-37		
					4+44.0	4+41.0			#229	143 N. Battin			5-15-37	
					4+58	4+55								
					4+95.5	4+92.5		#1593	#1643	148 N. Bleckley	147 N. R. Battin		5-26-39 12-14-31 6-15-39	
5+0	167.08	157.75	9.3		5+19.4	5+16.4								
					5+43.5	5+40.5								
					5+70.3	5+67.3		#275	#1333	152-154 N. Bleckley	157 N. Battin		5-19-38 2-1-39	
6+0	167.98	158.10	9.9		5+94.5	5+91.5								
				6+23	6+18	6+15								
					6+46	6+43								
					6+70	6+67								
7+0	168.15	158.45	9.7		6+94	6+91								
					7+21.5	7+18.5		#345	#285	202 N. Bleckley	208 N. Battin		9-2-35 7-20-35	
					7+45.8	7+42.8		#402		203 N. Bleckley Dr.			10-5-35	
					7+70.3	7+67.3								
8+0	169.05	158.80	10.2		7+97.5	7+94.5		#550	#74	210 N. Bleckley	211 N. Battin		12-24-36 1-20-37	
					8+21.5	8+18.5								
				8+35.8	8+46.4	8+43.4		#522		224 N. Bleckley			12-3-36	
					8+72.5	8+69.5			#1223	223 N. Battin			11-29-38	
9+0	169.95	159.15	10.8		8+96.5	8+93.5			#321	227 N. Battin			8-26-36	
					9+21	9+18								
					9+49	9+46								
					9+72	9+69		#291		228 N. Bleckley Dr.	225 N. Battin		11-13-36	
10+0	170.15	159.50	10.6		9+97	9+94		#415	#222	222 N. Bleckley Dr.	229 N. Battin		10-13-36 6-22-36	
					10+24.3	10+21.3			#291	223 N. Battin			7-23-36	
					10+48.5	10+45.5								
				10+61.3	10+73	10+70		#345		238 N. Bleckley Dr.			9-2-36	
11+0	168.35	159.85	8.5		10+99.5	10+96.5		#335	#344	242 N. Bleckley	239 N. Battin		8-24-36 9-1-36	
					11+23.2	11+20.2								
					11+47.5	11+44.5								
					11+74.6	11+71.6			#340	249 N. Battin			8-25-36	
12+0	169.95	160.20	9.7		11+98.5	11+95.5								
					12+23.4	12+20.4		#298		256 Block			7-30-36	
				12+87.6	12+46.8	12+43.8			#37	257 N. Battin			3-6-36	
0+0	167.0	160.80	6.2	0+0	0+45.6	0+48.6								
1+0	166.5	161.00	5.5		0+69.7	0+72.7								
					0+93.7	0+96.7								
					1+20.3	1+23.3								
1+50.2	165.3	161.10	4.2	1+50.2	1+44.7	1+47.7								
0+0	163.28	154.0	9.3	0+0										
1+0	164.18	154.75	9.4	1+54.5	1+13									
2+0	165.58	155.50	10.1		2+17.5									
3+0	167.88	156.25	11.6	3+24.5	3+76.4									
4+0	169.83	157.00	12.8											
4+91	171.23	157.53	13.6	4+91										

See page 8 for plat

485 - Tap - 258 N. Bleckley Dr. - 11-12-36 Ripstra Plbg Co
26 - Tap - 222 N. Bleckley Dr - 2-11-37 - Chester Davidson.