

EASEMENTS

EASEMENT made Feb. 21, 1933, Filed March 31, 1933. From Joseph G. Carey & Wife.
 A 10' easement thru the S.W. 1/4 of Sec. 25, 27S, R.1.E. The 1/2 of said 10' easement is described as follows: Comm. at a point 21.3' E. of S.W. cor. of said S.W. 1/4 of Sec. 25, thence in a N.E. direction at an angle with the S.L. of said S.W. 1/4 of Sec. 25 of 58° 20' a distance of 39' thence with an angle to the R. of 0° 09' a distance of 500'; thence with an angle to the L. of 15° 10' a distance of 1100'; thence with an angle to the L. of 4° 57' a distance of 800'; thence with an angle to the Lt. of 7° 19' a distance of 345' ± to a point on the N.L. of said S.W. 1/4 of Sec. 25. 786' E. of N.W. cor. of said S.W. 1/4 of Sec. 25. Party of 1st part has right to connect not more than 16 houses to sewer line without payment of any fees.

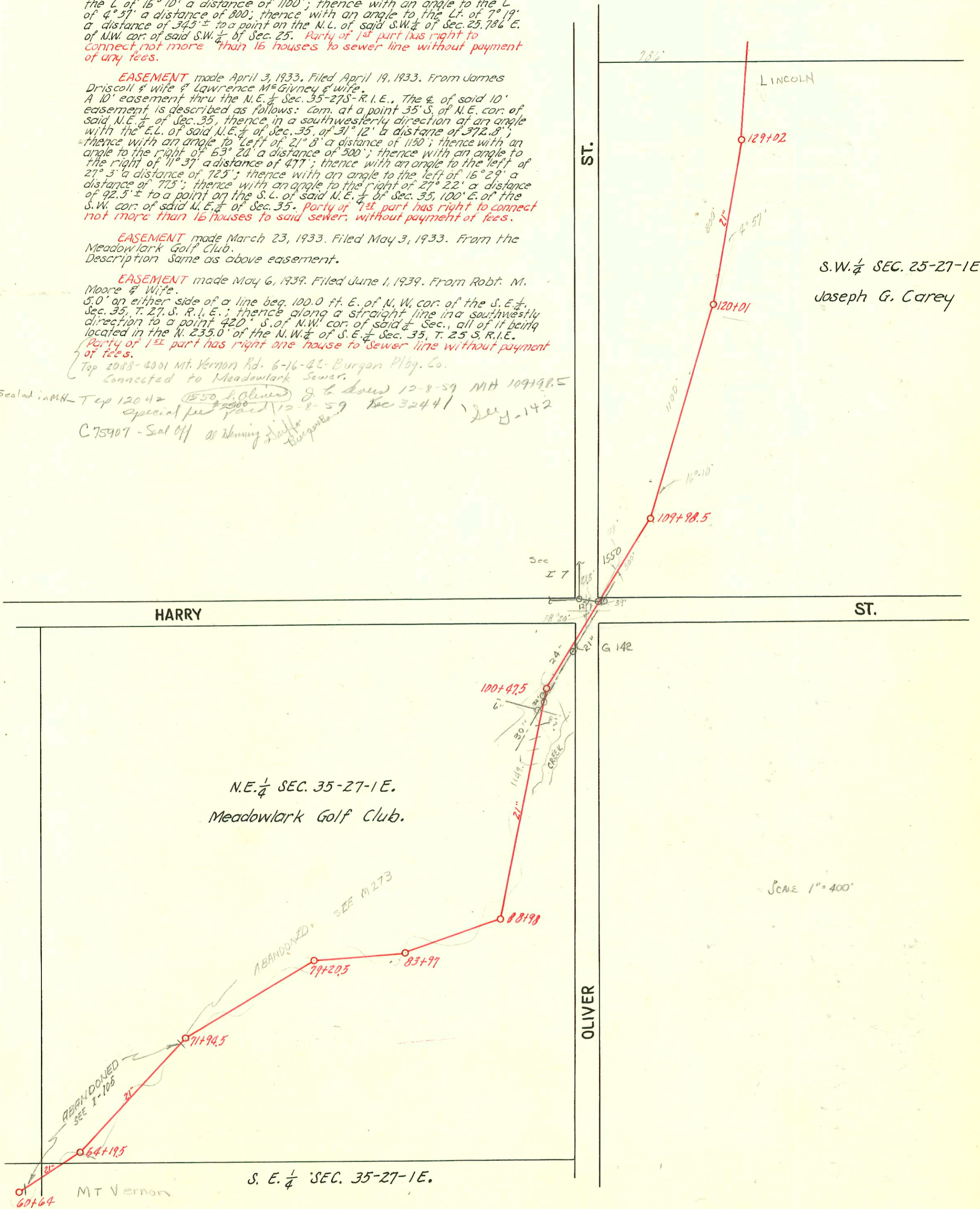
EASEMENT made April 3, 1933, Filed April 19, 1933. From James Driscoll & wife & Lawrence M. Givney & wife.
 A 10' easement thru the N.E. 1/4 Sec. 35-27S-R.1.E., The 1/2 of said 10' easement is described as follows: Com. at a point 35' S. of N.E. cor. of said N.E. 1/4 of Sec. 35, thence in a southwesterly direction at an angle with the E.L. of said N.E. 1/4 of Sec. 35, of 31° 12' a distance of 372.8', thence with an angle to the left of 21° 8' a distance of 1150'; thence with an angle to the right of 53° 20' a distance of 500'; thence with an angle to the right of 11° 37' a distance of 477'; thence with an angle to the left of 21° 3' a distance of 725'; thence with an angle to the left of 15° 29' a distance of 775'; thence with an angle to the right of 27° 22' a distance of 92.5' ± to a point on the S.L. of said N.E. 1/4 of Sec. 35, 100' E. of the S.W. cor. of said N.E. 1/4 of Sec. 35. Party of 1st part has right to connect not more than 16 houses to said sewer, without payment of fees.

EASEMENT made March 23, 1933, Filed May 3, 1933. From the Meadowlark Golf Club.
 Description Same as above easement.

EASEMENT made May 6, 1939, Filed June 1, 1939. From Robt. M. Moore & Wife.
 5.0' on either side of a line beg. 100.0 ft. E. of N.W. cor. of the S.E. 1/4 Sec. 35, T. 27 S. R. 1. E.; thence along a straight line in a southwesterly direction to a point 420' S. of N.W. cor. of said 1/4 Sec., all of it being located in the N. 235.0' of the N.W. 1/4 of S.E. 1/4 Sec. 35, T. 25 S. R. 1. E. Party of 1st part has right one house to sewer line without payment of fees.

Top 2033-4001 Mt. Vernon Rd. 6-16-42-Burgan Plog. Co.
 Connected to Meadowlark Sewer.

Sealed in M.H. Top 1204 = (1550 S. Oliver) J. L. Low 12-8-59 M.H. 109498.5
 special fee paid 12-8-59 fee 32441, July-142
 C 75407 - Seal Off at Henning Street Burgan Rd.



DRY CREEK SUBMAIN
 CARTER - DOBSON
 1933
 SCALE 1" = 400'

