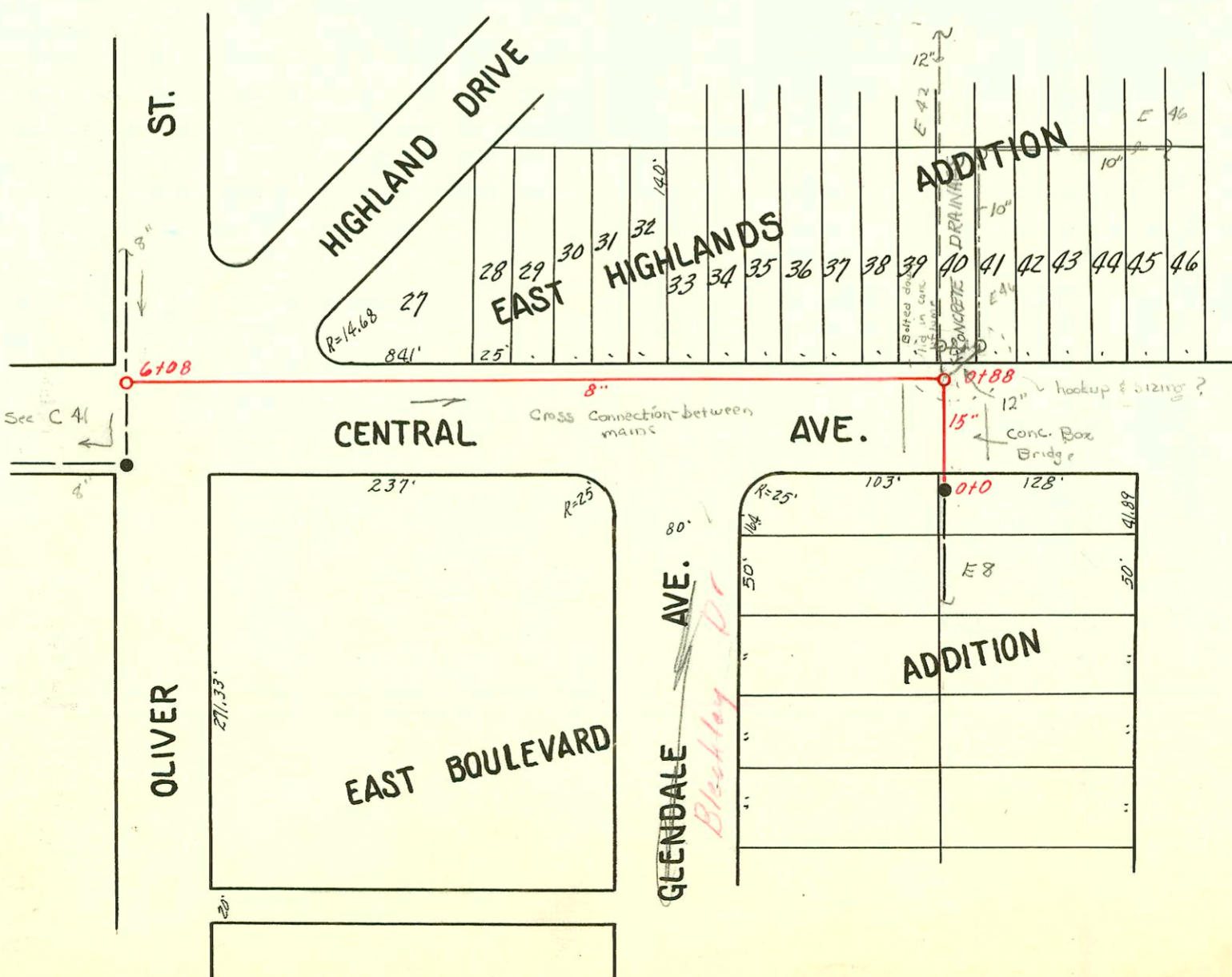
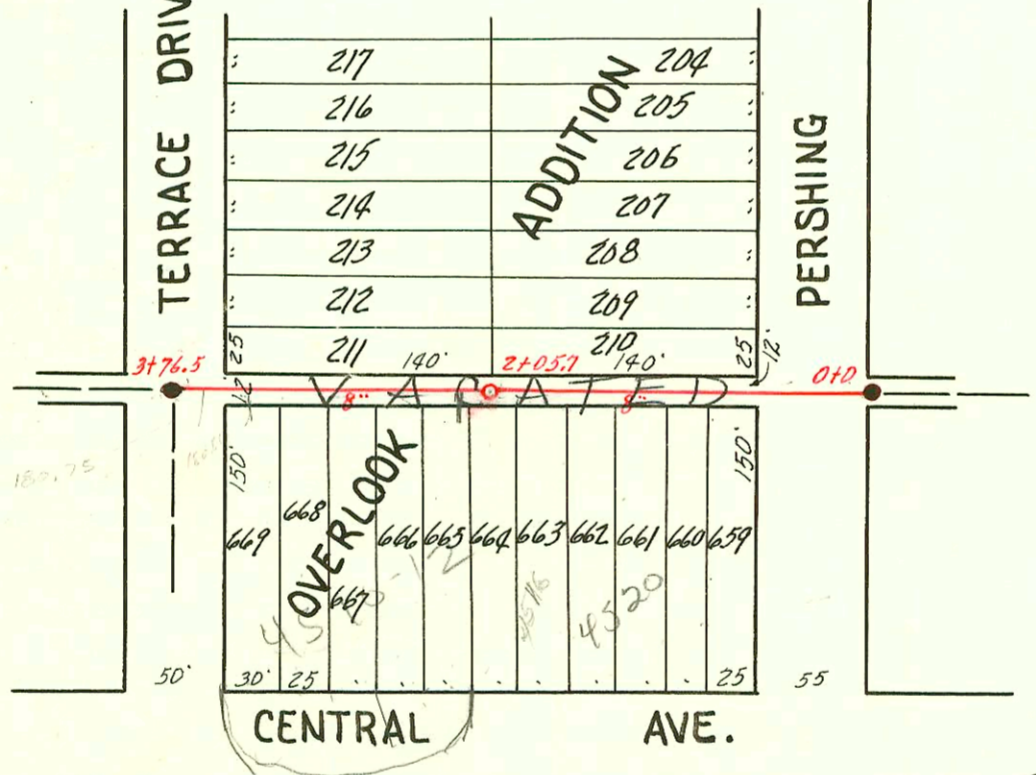


INTERCEPTS TO DRY CREEK
SUBMAIN TO S. S. #12
CARTER-DOBSON CONST. CO. 1933



SCALE 1"=100'

CONSTRUCTION RECORD					SERVICE RECORD							
STATION	ELEVATION		Depth	MANHOLE	4-INCH "Y" BRANCHES		No. of Permit		House Number		DATE OF PERMITS	
	Ground	Grade			North West	South East	North West	South East	North West	South East	North West	South East
0+0	163.13	153.20	9.93	0+0								
1+0	164.80	154.10	10.70									
2+0	165.20	155.00	10.20	1+78								
3+0	164.90	155.90	9.00									
4+0	165.70	156.80	8.90									
5+0	165.70	157.60	8.10	4+69								
5+91	167.80	158.50	9.30	5+91								
<hr/>												
0+0	173.40	164.07	9.33	0+0								
1+0	171.70	165.13	6.57	0+88								
2+0	172.70	165.98	6.72									
3+0	173.90	166.83	7.07									
4+0	175.20	167.68	7.52									
5+0	176.50	168.53	7.97									
6+0	177.20	169.38	7.82									
6+08	177.20	169.45	7.75	6+08								
<hr/>												
0+0	190.44	178.68	11.84	0+0	-	-						
1+0	192.05	179.20	12.85		-	0+92	#2489		501 N. Pershing		7-10-40	
						1+38.5	#4049		4520-2		3-12-57	
2+0	192.35	179.80	12.55	2+05.7	-	1+86.0	4728		4516-20		6-18-57	
					-	2+21.2	#1547		4510-12		6-7-52	
3+0	193.91	180.40	13.51		-	2+78.0			4502-4		6-9-52	
3+76.5	192.79	180.86	11.93	3+76.5	-	3+32.6	#15272		E. Central		11-7-52	

#2385 - Tap - 519 N. Pershing - Simmons Plog. Co. - 7-11-50
 #1548 - Tap - 4506 - E. Central - Creekmore Plog. Co. - 6-9-52 (2+32.7)
 4049 - Tap - 4520 - E. Central - H. O. Smith - 3-14-57
 #20570 - 24168 - 4510 E. Central - Rep (McCullough) - ()