

M.H. 282764
13TH

MATHEWSON AVE.

12TH

Portion of sewer removed by Diamond Engineering to connect under ground cable. Sewer has been plugged by Sewer Maint. Crew 4-29-67 J.L.P.

11TH

NEW YORK AVE.

10TH

M.H. 254+62

9TH

8TH ST.

MURDOCK

FRISCO

R/W

M.H. 6+45
M.H. 6+04

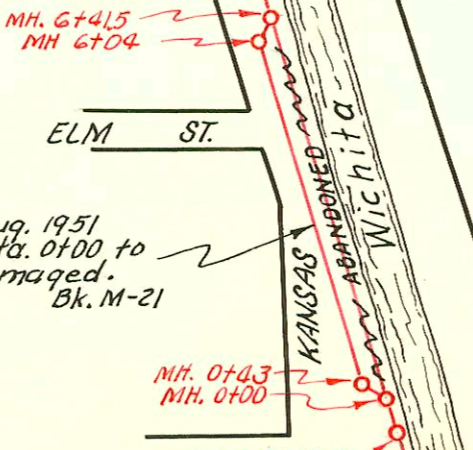
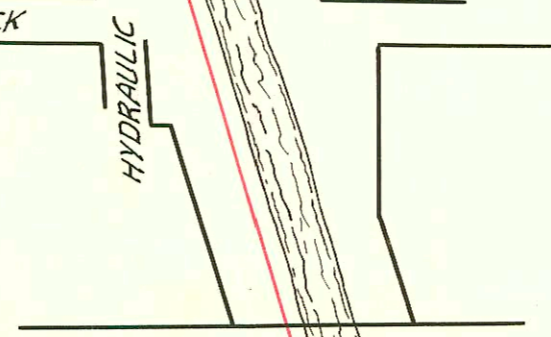
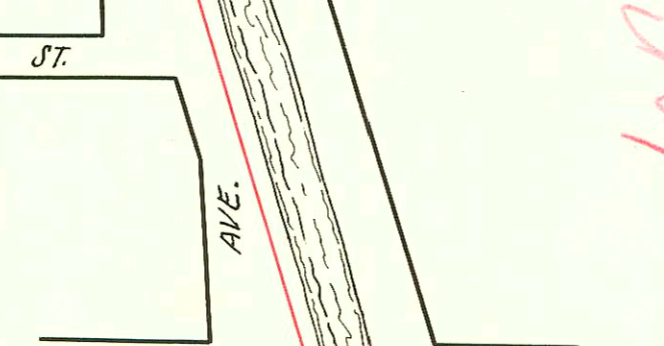
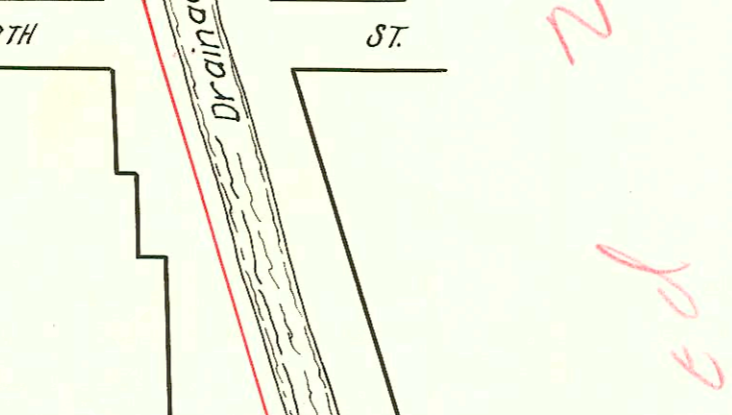
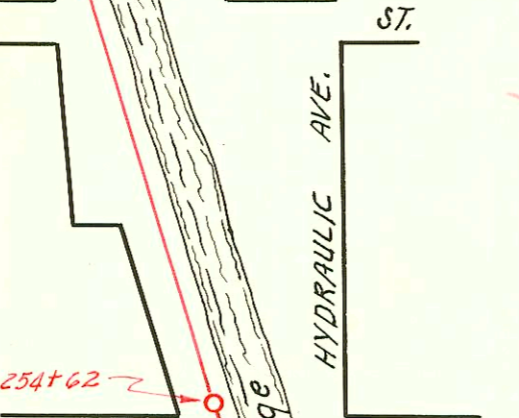
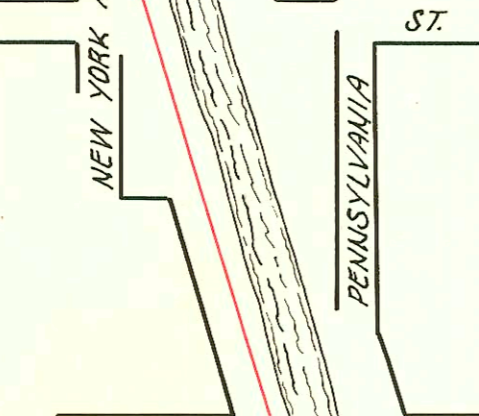
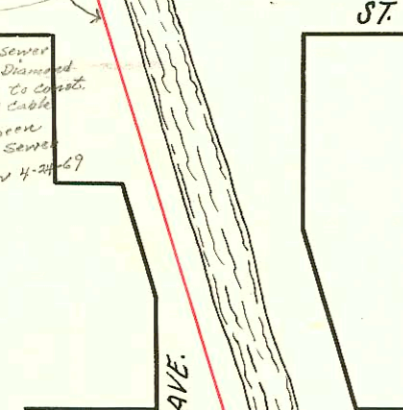
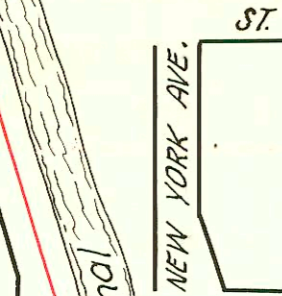
ELM ST.

Repair of Industrial Sewer. Aug. 1951
Abandoned existing line from Sta. 0+00 to Sta. 6+41.5. This line was damaged. New line constructed as shown Bk. M-21

M.H. 0+43
M.H. 0+00

CENTRAL

AVE.



Abandoned
21" Vitrified Clay Sewer
C.P.

INDUSTRIAL SEWER

21" Vitrified Clay Sewer
1933

