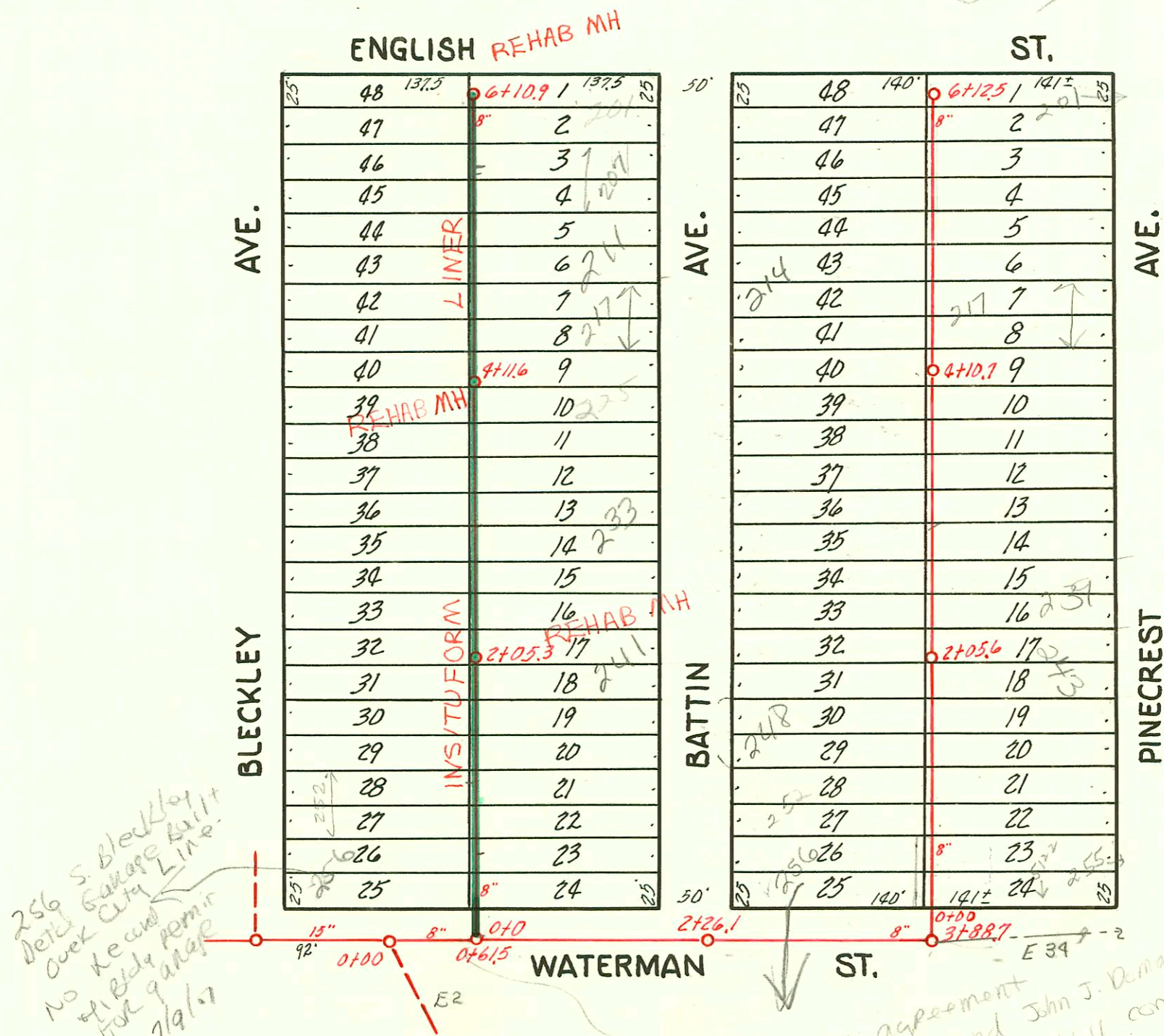


1994 SANITARY SEWER REHABILITATION PROGRAM-PHASE I
 PROD. NO. 468-82399 (623124)
 BUILT BY INSITUFORM PLAINS, INC.
 BOOKED 2-10-95 FROM AS BUILTS

See copy for
 of plat for
 UTIL ESMIT



RECONNECTIONS

STA.	ADDRESS	DIRECTION
5+77.9	201 S. Battin	East
5+75.9	202 & 205 S. Bleckley	West
5+54.7	207 S. Battin	East
5+34.7	208 S. Bleckley	West
4+89.6	214 S. Bleckley	West
4+86.3	211 S. Battin	East
4+52.8	217 & 219 S. Battin	East
4+29.5	220 S. Bleckley	West
4+00.9	225 S. Battin	East
3+50.8	228 S. Bleckley	West
3+48.3	229 S. Battin	East
2+95.8	233 S. Battin	East
2+82.5	232 S. Bleckley	West
2+46.4	238 S. Bleckley	West
2+43.3	237 S. Battin	East
1+93.4	242 S. Bleckley	West
1+90.3	241 S. Battin	East
1+69.9	248 S. Bleckley	West
1+67.1	247 S. Battin	East
1+16.9	252 S. Bleckley	West
0+88.3	253 S. Battin	East
0+65.3	256 S. Bleckley	West
0+62.9	257 S. Battin	East

Refer to agreement between city and John J. Deman
 Film 0880 P5 1464 concerning
 sewer easement
 permission granted to build
 garage 1, into 5' util ESMIT
 with 2' into Rest overhang appor
 about project, indemnify against
 adjacent Prop owners against
 any increase cost to repair
 service line
 See computer - city lines
 changed in this area

2001-03106- Roto- Pipe Burst 4" PE SDR17, + Repair by city, 4" Predco

LAT. M, DIST. 6, S. S. 20
 SHERWOOD CRANE 1937

