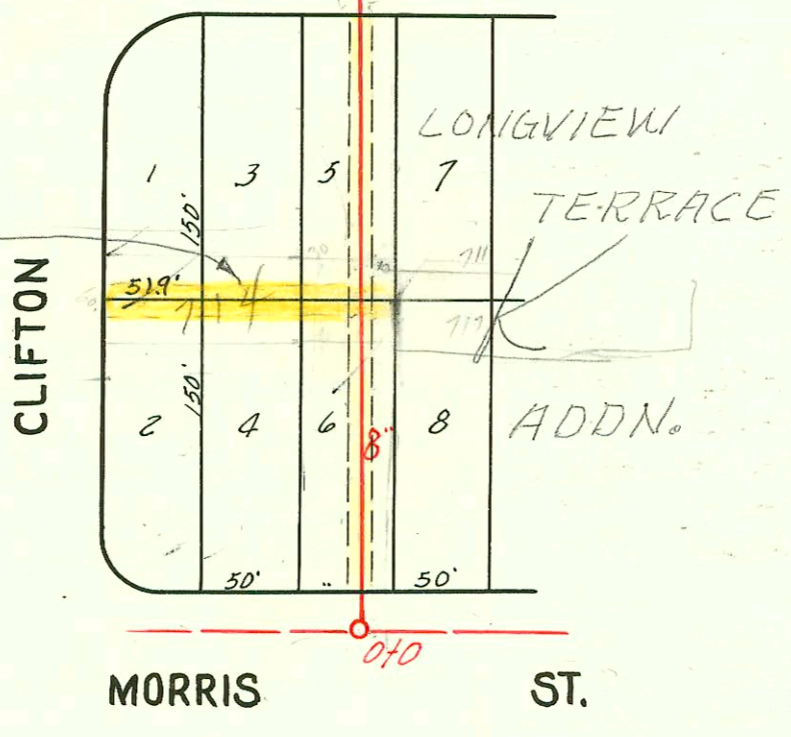


Easement.  
Rear 5' of lots  
1, 2, 3, 4, 5 & 6  
Blk 'K' Vacated  
Ord. 20-645  
1-5-55



EASEMENT Made Dec. 26<sup>th</sup>, 1941, From Clair Fees Lindsley & Frank A. Lindsley, her husband. The west 10 ft. of the E. 20 ft. of lots 5 & 6 Blk. K, Longview Terrace Addition.

LAT. 4, DIST. 6, S.S. 12  
W. B. CARTER  
1942

CONSTRUCTION RECORD						SERVICE RECORD						
STATION	ELEVATION		Depth	MANHOLE	4-INCH "Y" BRANCHES		No. of Permit		House Number		DATE OF PERMITS	
	Ground	Grade			North West	South East	North West	South East	North West	South East	North West	South East
0+0	151.90	143.20	8.70	0+0	0+29.3	0+26.3	#337	91-359497	726 S. Clifton	727 S. Yale	7-7-47	10-24-91 5-26-48
					0+60.1	0+57.1	#338		723 S. Clifton		7-7-47	
					0+84.7							
1+0	152.30	143.40	8.90		1+08.8							
					1+33.1	1+45.0	#339	#58148	717 S. Yale		7-7-47	10-13-76 6-2-48
					1+56.9				712 S. Clifton			
					1+71.9	1+83.4	#427	#13777	711 S. Yale			5-17-85 7-22-48
					1+96.7							
2+0	153.40	143.60	9.80		2+21.1		#340		703 S. Clifton		7-7-47	
					2+44.9							
					2+69.9	2+72.4	#341	#376	702 S. Clifton	701 S. Yale	7-7-47	7-8-48
3+0	150.20	143.80	6.40		2+92.4							
				3+58.8	3+95.1	3+92.1	#332	#1154	662 Clifton	659 S. Yale	10-25-46	12-21-46
4+0	150.50	144.00	6.50		4+18.3	4+15.3	#331		653 Clifton		10-25-46	
					4+47.0	4+44.0						
					4+71.2	4+68.2	#330		654 Clifton		10-25-46	
5+0	154.40	144.20	10.20		5+00.0	4+97.0	#329		650 Clifton		10-25-46	
					5+23.2	5+20.2						
					5+50.3	5+47.3	#1157		647 S. Yale		10-25-46	
6+0	155.60	144.40	11.20		5+74.6	5+71.6	#828		646 Clifton		10-25-46	12-21-46
				6+19.6	5+97.9	5+94.9						
					6+30.0	6+27.0	#348	#109	640 Clifton	641 S. Yale	10-25-46	12-24-42
					6+52.1	6+49.1	#107		631 S. Yale			12-11-42
					6+79.7	6+76.7	#216		636 S. Clifton		6-23-47	
7+0	156.10	144.60	11.50		7+05.0	7+02.0	#1172		629 S. Yale		12-24-46	
					7+31.9	7+28.9	#28					11-19-42
					7+56.8	7+53.8						
					7+83.0	7+80.0	9387	#2946	623 S. Yale		2-24-59	10-31-42
8+0	156.30	144.80	11.50		8+11.5	8+08.5	#1171	#2945	617 S. Clifton	618 S. Yale	12-24-46	10-31-42
					8+37.0	8+34.0						
				8+79.2	8+66.0	8+63.0						
					8+83.1	8+80.1	#1170	#2746	612 S. Clifton	611 S. Yale	12-24-46	9-28-42
9+0	157.10	145.00	12.10		9+17.6	9+14.6	#1169	#2818	606 S. Clifton	605 S. Yale	6-11-93 12-24-46	10-8-42
					9+45.0	9+42.0						
					9+70.8	9+67.8						
				9+82.4	1-4" stub Wye N. NE.		#553	#1427	602 S. Clifton	601 S. Yale	8-3-48	11-8-48
10+0	156.20	146.00	10.20		10+04.1							
				10+07.7 (O.H.)								

#1155 - Top - 655 S. Yale - 12-21-46 - Wichita Hwy. Co.  
 #1156 - Top - 651 S. Yale - 12-21-46 - Wichita Hwy. Co.  
 #75 - Top - 721 S. Yale - 5-26-48 - Harley Riggs -  
 #463 - Top - 707 S. Yale - 7-28-48 - Harley Riggs -