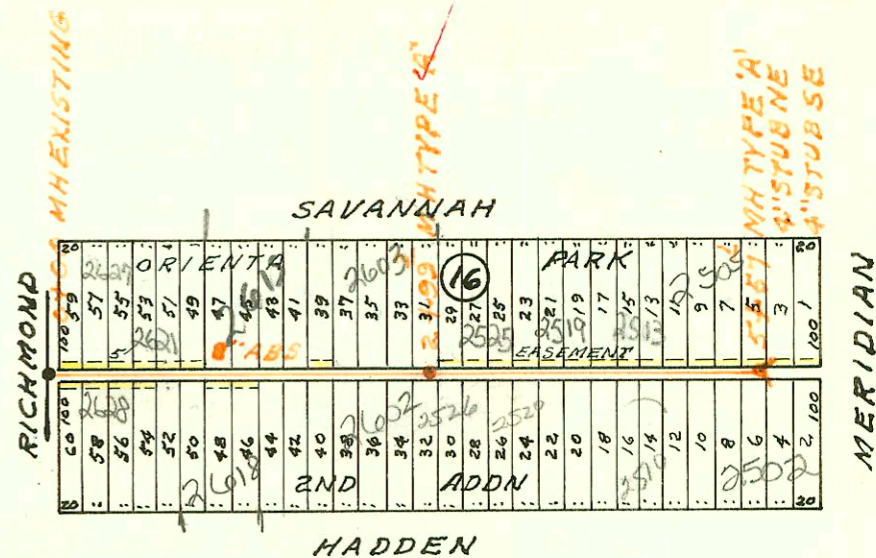


LATERAL 7 MAIN 18 SS N<sup>o</sup> 22  
 BUILT BY: MID STATES CONST. CO.  
 PROJ. N<sup>o</sup> 468-76-245-80110-000-000-001  
 BOOKED 1-26 -80 FROM JPC 5V

ON MAP

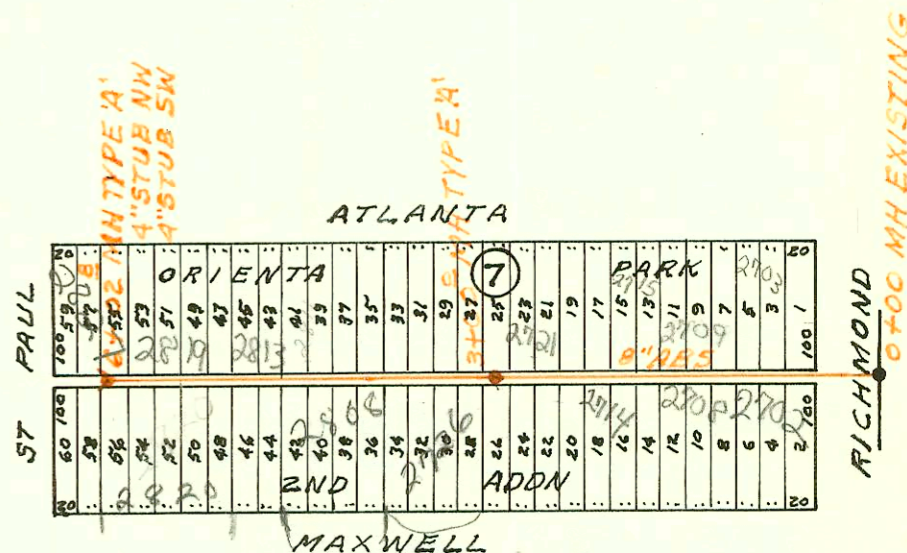
SCALE 1" = 150'



LATERAL 8 MAIN 18 SS N<sup>o</sup> 22  
 BUILT BY: ARKANSAS CONST. CO.  
 PROJ. N<sup>o</sup> 468-76-245-80124-000-000-001  
 BOOKED 1-28 -80 FROM JPC 5-V

ON MAP

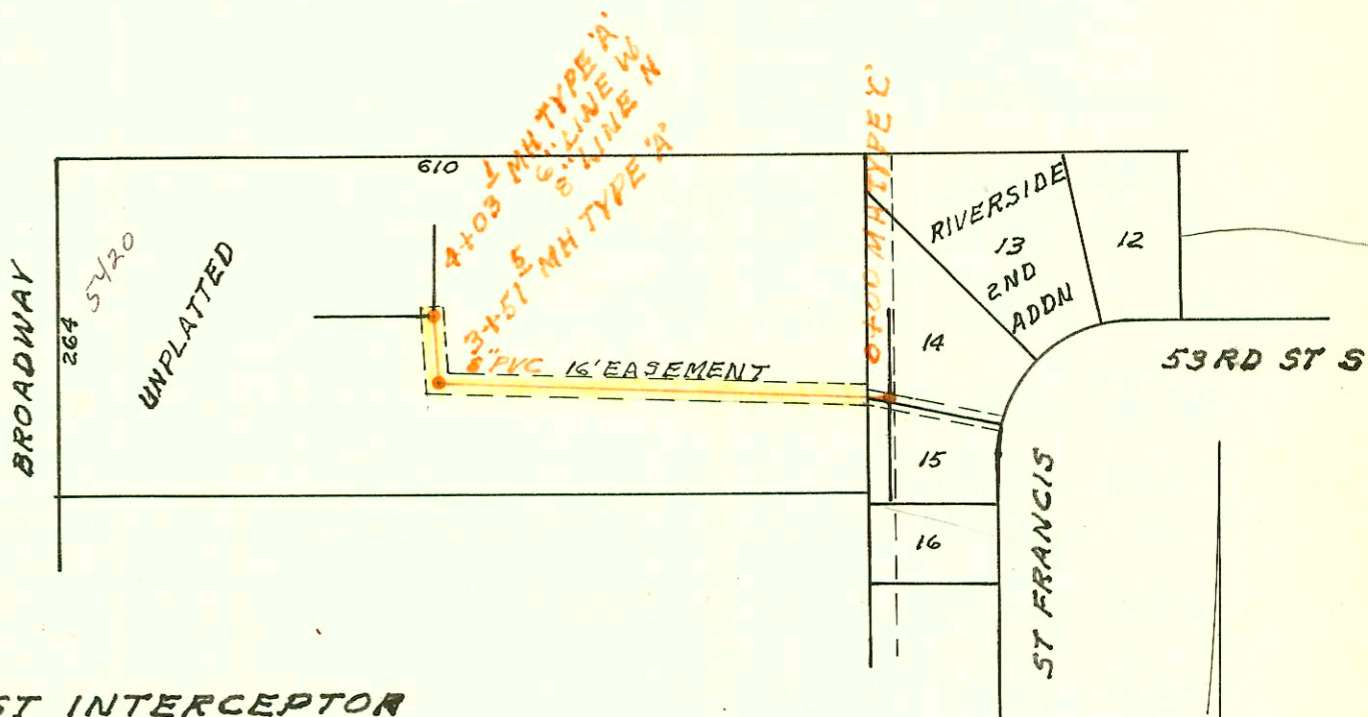
SCALE 1" = 150'



LATERAL 19 MAIN 2 SOUTHWEST INTERCEPTOR  
 BUILT BY: ARKANSAS CONST. CO.  
 PROJ. N<sup>o</sup> 468-76-245-80800-000-000-001  
 BOOKED 1-29-80 FROM JPC 5-V

ON MAP

SCALE 1" = 150'



CONSTRUCTION RECORD

SERVICE RECORD

STATION	ELEVATION		Depth	MANHOLE	4-INCH "Y" BRANCHES		No. of Permit		House Number		DATE OF PERMITS	
	Ground	Grade			North West	South East	North West	South East	North West	South East	North West	South East
LAT 98 SWI CONT'D												
LINE 2 0+00	161.1	147.74	13.4	0+00=2+65 LINE 1								
1+00	160.6	148.14	12.5		0+21.0 1+19.9 1+78.5	4" 50R 35 D+79.0 top	6127	91-199259	1102 W 147 1438 N Prescott	1439 Fieldcrest	7-8-82	3-28-91
2+00	159.8 159.5	148.54 148.62	11.3 10.9	2+19.6	2+25.2		2090		1430 Prescott	1431 Fieldcrest	12-9-81	6-26-80
3+00	159.2	148.94	10.3		3+23.6 3+85.5	2+98.5	8508	2324	1422 Prescott	1423 Fieldcrest	6-24-83	1-9-81
4+00	158.3 158.1	149.34 149.50	9.0 8.6	4+40.5	4" stub SW	4" stub SE	8267	3225	1415 Prescott	1415 Fieldcrest	6-1-83	4-30-81
LATERAL 7 MAIN 18 55 N#22												
0+00	101.57	97.70	3.9	0+00 EXISTING	0+62.5	0+15.3	174007	174084	2627 Savannah	2628 Hadden	8-29-79	9-5-79
1+00	101.6	97.90	3.7		1+26.1 1+80.0 top	1+85.3 top	174008	25574	2601 Savannah	2618 Hadden	8-29-79	11-26-90
2+00	101.5 102.0	98.10 98.30	3.4 3.7	2+99.3	2+68.3 top	2+78.3 top	20635	22924	2603 Savannah	2602 Hadden	5-6-88	4-17-89
3+00	102.0	98.30	3.7		3+52.4 top	3+14.8 top	174009	12042	2525 Savannah	2526 Hadden	8-29-79	9-18-84
4+00	100.9	98.50	2.4		3+91.9 top	3+72.3 top	174010	12043	2519 Savannah	2520 Hadden	8-29-79	9-18-84
5+00	101.3 102.1	98.70 98.82	2.6 3.3	5+57.1	5+05.0 top	4" SCH 40	27052	2000-01549	2513 Savannah	2510 Hadden	8-29-79	7-25-84
LATERAL 8 MAIN 18 55 N#22												
0+00	102.3	98.37	3.9	0+00 EXISTING	0+60.0		174336		2703 Atlanta		9-17-79	
1+00	101.7	98.57	3.1		1+18.6	1+05.0	174343	174341	2709 Atlanta	2702 Maxwell	9-17-79	9-17-79
2+00	101.8	98.77	3.0		2+09.0	2+28.3	174342		2715 Atlanta	2705 Maxwell	9-17-79	9-17-79
3+00	102.3	98.97	4.3	3+00			174340		2714 Atlanta	2714 Maxwell	9-17-79	9-17-79
4+00	103.5	99.17	4.3				21463		2726 Maxwell		9-17-79	9-17-79
5+00	103.6	99.37	4.2		4+24.1 top		174335	97-0817	2811 Atlanta	2808 Maxwell	4-28-80	10-5-99
6+00	103.3 103.3	99.57 99.58	3.7 3.7	6+02.8	5+01.3 5+28.8 top	5+38.8 top 4" SCH 40 5+67.8 top	174337	961817	2813 Atlanta	2819 Atlanta	9-17-79	2-15-86 10-15-86
LATERAL 19 MAIN 2 SOUTHWEST INTERCEPTOR												
0+00	87.3	79.79	7.5	0+00								
1+00	86.3	80.19	6.1									
2+00	85.8	80.59	5.2									
3+00	85.8 85.8	80.99 81.20 81.30	4.8 4.6 4.5	3+51.5								
4+00	86.0 86.0	81.49 81.50	4.5 4.5	4+03.1	8" LINE N 6" LINE W							