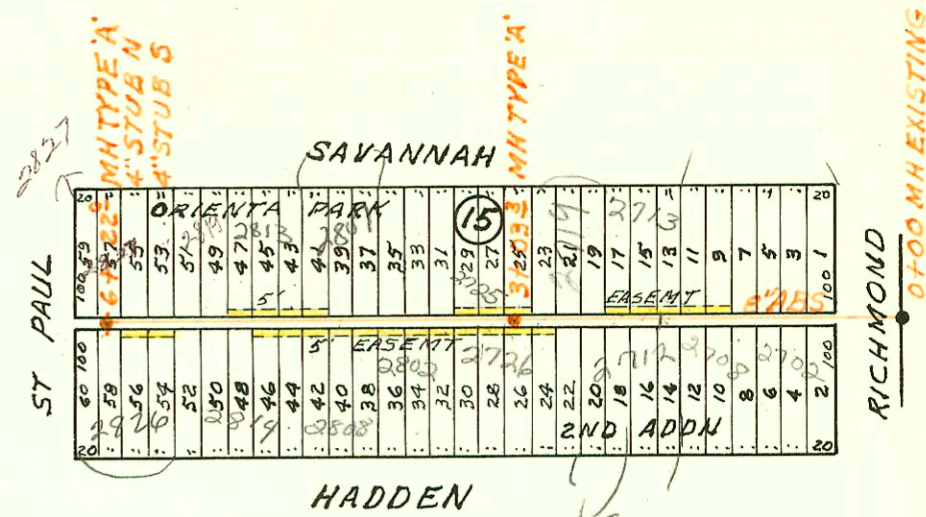


LATERAL 11 MAIN 18 SS N^o 22
BUILT BY: MID STATES CONST. CO.
PROJ. N^o 468-76-245-80707-000-000-001
BOOKED 2-15-80 FROM JPC S-IV

on map

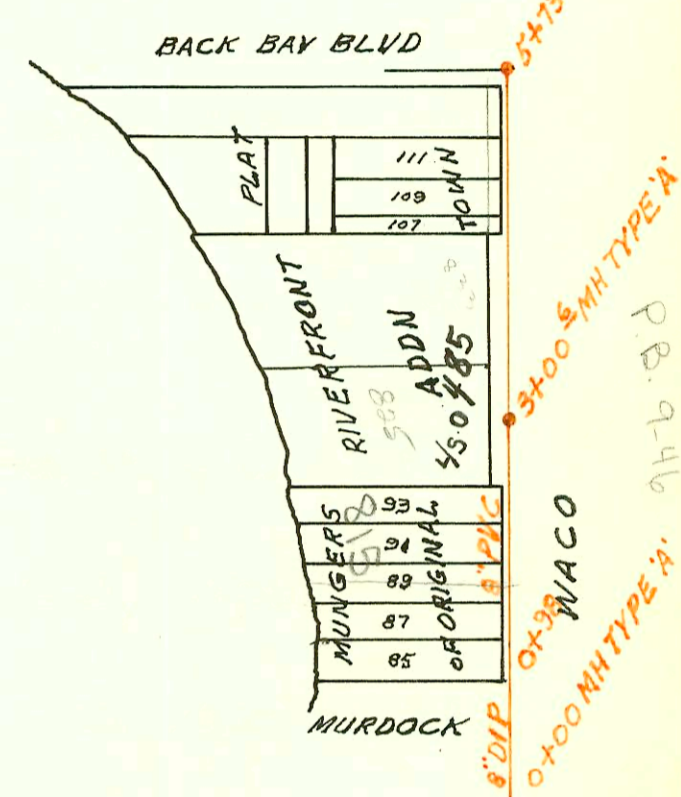
SCALE 1"=150'



LATERAL 1 WEST MAIN A SS N^o 1
BUILT BY: MID STATES CONST. CO.
PROJ. N^o 468-76-245-80712-000-000-001
BOOKED 2-16-80 FROM JPC S-IV

on map

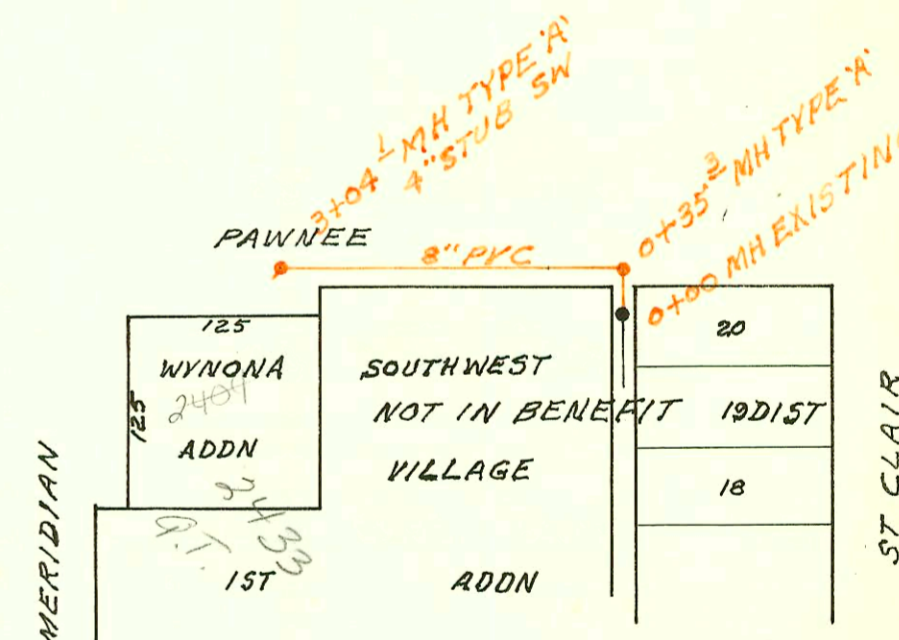
SCALE 1"=150'



LATERAL 34 MAIN 3 SS N^o 22
BUILT BY: MID STATES CONST. CO.
PROJ. N^o 468-76-245-80791-000-000-001
BOOKED 2-16-80 FROM JPC S-IV

on map

SCALE 1"=150'



CONSTRUCTION RECORD							SERVICE RECORD					
STATION	ELEVATION		Depth	MANHOLE	4-INCH "Y" BRANCHES		No. of Permit		House Number		DATE OF PERMITS	
	Ground	Grade			North West	South East	North West	South East	North West	South East	North West	South East
LAT 17 MAIN 7 SS N ^o 23 CONT'D												
LINE 2 0+00	175.3	164.35	11.0	0+00 EXISTING								
	174.5	164.67	9.8	0+78.6	4" STUB SE		#3441		6731 W Winterberry			6-5-81
LINE 3 0+00 177.2 167.72 9.5 0+00 EXISTING												
1+00	178.2	168.12	10.1						6834 Winterberry			8-13-81
2+00	179.5	168.52	11.0		1+54.0 top	1+97.0 top	2817	3790	5031 Euclid	6842 Winterberry	3-11-81	7-21-81
	180.2	168.91	11.3	2+98.0	2+37.4 top	2+86.0 top	2818	3711	3027 Firshand	6850 Winterberry	3-11-81	7-21-81
3+00	180.2	168.93	11.3			3+37.0 top		3716		6858 Winterberry		7-21-81
4+00	181.0	169.93	11.1									
5+00	182.9	170.93	12.0		4+94.5 top	5+66.5 top		6975		6902 Winterberry		11-12-82
	184.5	171.82	12.7	5+88.5	4" STUB SE			5505		6908 Winterberry		8-3-82
LATERAL 11 MAIN 18 SS N ^o 22												
0+00	101.6	97.60	4.0	0+00 EXISTING								
1+00	101.3	97.80	3.5		0+82.0 top	1+40.0 top	988310	5170	2705 Savannah	2702 Hadden	9-29-78	2-4-82
2+00	101.6	98.00	3.6		1+77.0 top	4" SCH 40 DL 1+90.3 TAP		4900	2713 Savannah	2708 Hadden	8-29-79	12-10-81
3+00	100.8	98.20	2.6		2+59.3 top	3+28.8 top	13992	2001-00303	2717 Savannah	2712 W Hadden	4-4-85	2-12-01
	101.37	98.21	3.2	3+03.3					2725 Savannah		8-29-79	
4+00	101.2	98.40	2.8		4" SCH 40 CUT 4+35.7 TAP	3+50.1 top	2002	074003	2809 Savannah	2726 Hadden	8-29-79	8-29-79
					4+81.0 top	4+79.3 top	074004	073999	2813 Savannah	2802 Hadden	4-30-82	8-29-79
5+00	101.3	98.60	2.7		4" SCH 40 5+11.3 top	5+40.0 top	074005	073999	2814 Savannah	2808 Hadden	8-29-79	8-29-79
							5361	2819 Savannah		2817 Hadden	See Below	3-24-01
6+00	101.6	98.80	2.8									
	102.01	98.84	3.2	6+22.0	4" STUB N	4" STUB S	3362	26977-7	2827 Savannah	2826 Hadden	5-27-81	7-12-91
LATERAL 1 WEST MAIN A SS N ^o 1												
0+00	117.00	111.50	5.5	0+00								
1+00	116.7	111.83	4.9		top	7+67.0		073903	815 W Waco			8-24-79
2+00	117.0	112.17	4.8					4102	825 W Waco			9-10-81
3+00	117.27	112.50	4.8	3+00.6								
4+00	117.5	112.84	4.7					2068	833 W Waco			12-10-80
5+00	117.8	113.18	4.6									
	117.6	113.43	4.2	5+73.8	6" PIPE W							
LATERAL 34 MAIN 3 SS N ^o 22												
0+00	101.1	96.80	4.3	0+00 EXISTING								
	100.3	96.99	3.3	0+35.3								
1+00	101.2	97.15	4.1									
2+00	101.0	97.40	3.6									
3+00	101.4	97.65	3.8									
	101.5	97.66	3.8	3+04.1	4" STUB SW			6851	7433 W	313 S		10-25-82
					Temp 5' to 6' S of manhole			073912	2404 S. Meridian	2404 S. Meridian	See Below	11-20-79
					4" sch 40 ABS 4" stub			91-32811-7				8-26-91
2001-00682-3/29/01-2814 W Hadden - Reddy Rootr - 4" sch 40 Replace 3' section of line between Coy house. 2001-00657-3/26/01-2814 W Hadden - Reddy Rootr - Repair broken line w/ferroc ITW Waco 97-56657-4-14-97 2404 S. Meridian - Kruse Service -												

Handwritten notes on the right side of the page, including "d line not" and other illegible scribbles.