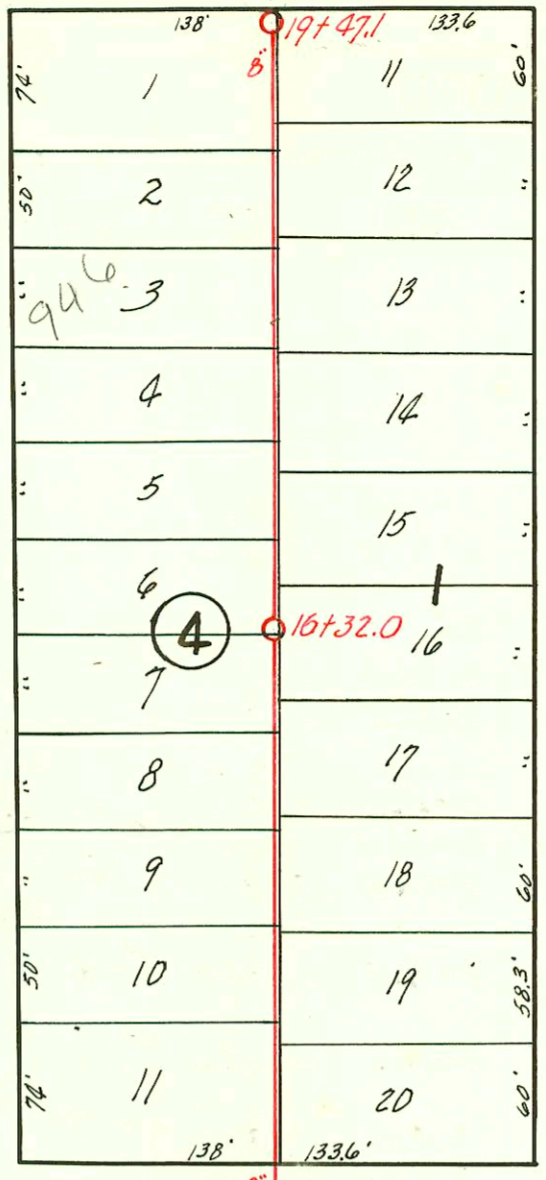


9TH. ST. 12"

AVE.

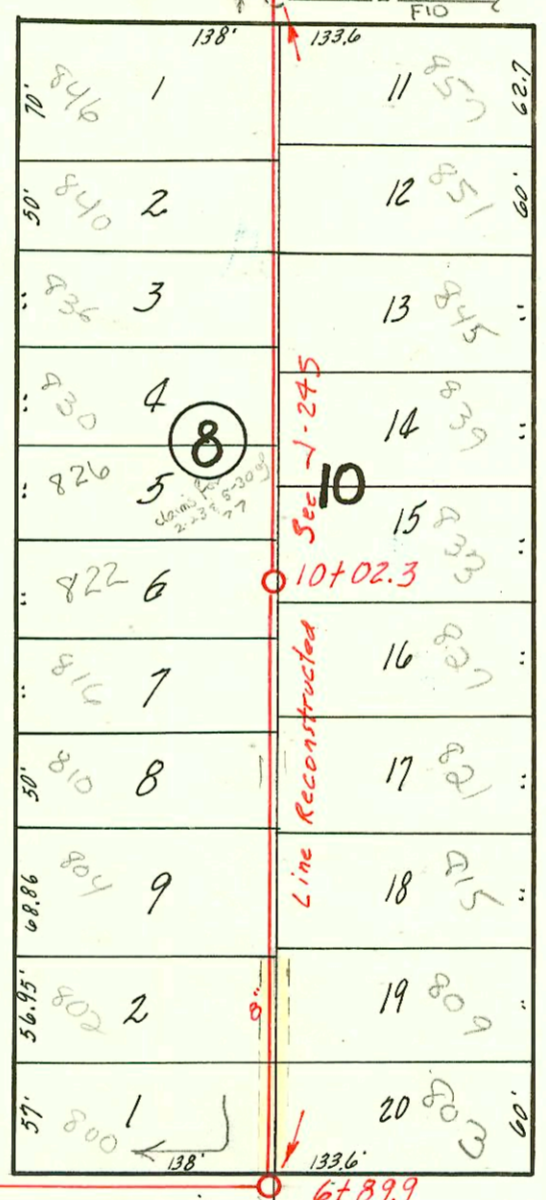
AVE.



8TH ST. 12"

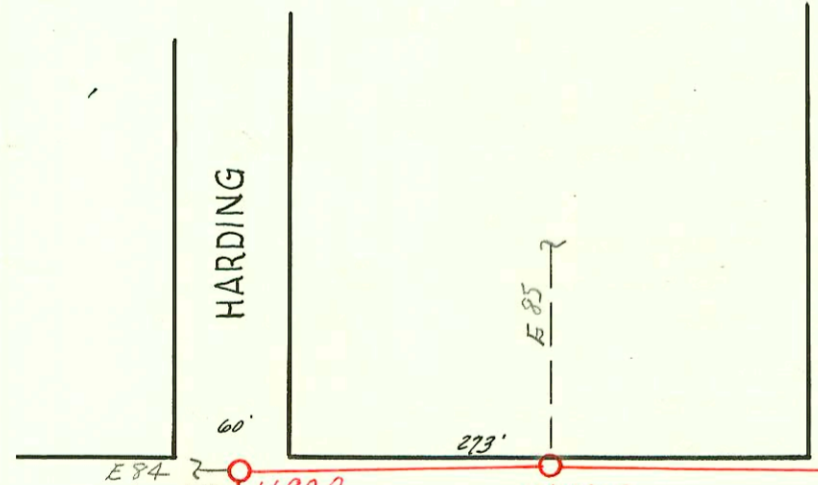
BATTIN

PINECREST



MURDOCK AVE.

HARDING



SW. COR.  
N.W. 1/4 - S.W. 1/4  
Sec. 13-T. 27  
R. 1 E.

EASEMENT 15' in Width  
From Aaron Youngheim  
Made August 1, 1942  
Recorded Misc. Book-164, P-338

Scale 1"=100'

# LAT. 10, DRY CREEK SUBMAIN, S. S. 12

W. B. CARTER

1942

CONSTRUCTION RECORD						SERVICE RECORD						
STATION	ELEVATION		Depth	MANHOLE	4-INCH "Y" BRANCHES		No. of Permit		House Number		DATE OF PERMITS	
	Ground	Grade			North West	South East	North West	South East	North West	South East	North West	South East
0+0	176.10	170.50	5.60	0+0								
1+0	178.20	170.75 171.00 171.20	7.45	1+98.0								
2+0	178.70	171.20	7.50									
3+0	176.30	171.45 171.59 173.32	4.85	3+58.2								
4+0	176.90	173.41	6.49									
5+0	179.00	173.61	5.39									
6+0	183.70	173.81	9.89	6+89.9								
7+0	185.90	174.12	11.78		7+06.0	7+03.0	#15812 #1133	#15838 #1748	809 N. Battin 803 N. Pinecrest	3-13-86 12-18-46		3-13-86 4-7-47
					7+33.7	7+30.7						
					7+60.7	7+57.7						
					7+84.8	7+81.8	#15815 #1130	#15897 #1747	802 N. Battin 809 N. Pinecrest	5-13-86 12-18-46		3-13-86 4-7-47
8+0	184.40	174.32	10.08		8+22.3	8+19.3	#15814 #07	#15890 #1746	804 N. Battin 815 N. Pinecrest	5-13-86 5-3-46		3-13-86 4-7-47
					8+45.8	8+42.8						
					8+87.8	8+84.8	#15815 #46	#15891 #1745	810 N. Battin 821 N. Pinecrest	3-13-86 5-3-46		3-13-86 4-7-47
9+0	181.70	174.52	7.18		9+11.4	9+08.4	#15810 #45	#15892 #1744	814 N. Battin 827 N. Pinecrest	3-13-86 5-3-46		3-13-86 4-7-47
					9+36.2	9+33.2						
					9+63.2	9+60.2						
					9+87.0	9+84.0	#15817 #44	#15893 #1743	822 N. Battin 826 N. Pinecrest	3-13-86 5-3-46		3-13-86 4-7-47
10+0	183.10	174.72	8.38	10+02.3	10+10.8	10+07.8	#15818 #43	#15894 #1742	826 N. Battin 833 N. Pinecrest	3-13-86 5-3-46		3-13-86 4-7-47
					10+37.0	10+34.0						
					10+63.0	10+60.0						
					10+88.4	10+85.4	#15819 #42	#15895 #1741	830 N. Battin 839 N. Pinecrest	3-13-86 5-3-46		3-13-86 4-7-47
11+0	183.60	174.92	8.68		11+11.5	11+08.5	#15820 #41	#15895 #1737	836 N. Battin 845 N. Pinecrest	3-13-86 5-3-46		3-13-86 4-7-47
					11+38.4	11+35.4						
					11+62.6	11+59.6						
					11+87.5	11+84.5	#15821 #40	#15896 #1738	840 N. Battin 856 N. Pinecrest	3-13-86 5-3-46		3-13-86 4-7-47
12+0	182.70	175.12	7.58		12+11.1	12+08.1	#15822 #37	#15897 #1737	846 N. Battin 857 N. Pinecrest	3-13-86 5-3-46		3-13-86 4-7-47
					12+39.1	12+36.1						
					12+62.6	12+59.6						
				13+18.0								
13+0	184.40	175.32	9.08		13+71.8	13+68.8	#14	#373	906 N. Battin 903 N. Pinecrest	4-30-46		7-10-47
14+0	186.00	175.84	10.16		14+03.7	14+00.7	#13	#372	910 N. Battin 919 N. Pinecrest	4-30-46		7-10-47
					14+40.3	14+37.3						
					14+64.7	14+61.7	#12	#371	916 N. Battin 915 N. Pinecrest	4-30-46		7-10-47
15+0	186.60	176.44	10.16		15+18.9	15+15.9	#11	#370	922 N. Battin 921 N. Pinecrest	4-30-46		7-10-47
					15+42.0	15+39.4						
					15+67.1	15+64.1	#10	#369	926 N. Battin 927 N. Pinecrest	4-30-46		7-10-47
16+0	186.80	177.02	9.78	16+32.0	16+17.7	16+14.7						
					16+43.6	16+40.6	#9	#368	930 N. Battin 933 N. Pinecrest	4-30-46		7-10-47
					16+67.7	16+64.7	#8	#367	936 N. Battin 939 N. Pinecrest	4-30-46		7-10-47
17+0	186.10	177.60	8.50		17+19.1	17+16.1	#7	#366	940 N. Battin 939 N. Pinecrest	4-30-46		7-10-47
					17+42.3	17+39.3						
					17+67.1	17+64.1	#6	#365	946 N. Battin 945 N. Pinecrest	5-15-97 4-30-46		7-10-47
18+0	188.50	178.17	10.33		17+92.0	17+89.0	#5	#364	950 N. Battin 951 N. Pinecrest	4-30-46		7-10-47
					18+19.1	18+16.1						
					18+42.1	18+39.1						
					18+67.2	18+64.2						
					18+94.9	18+91.9	#4	#364	956 N. Battin 957 N. Pinecrest	4-30-46		7-10-47
19+0	190.80	178.75	11.75		19+21.6	19+18.6						
	191.70	179.04	12.66	19+47.1								

Finished