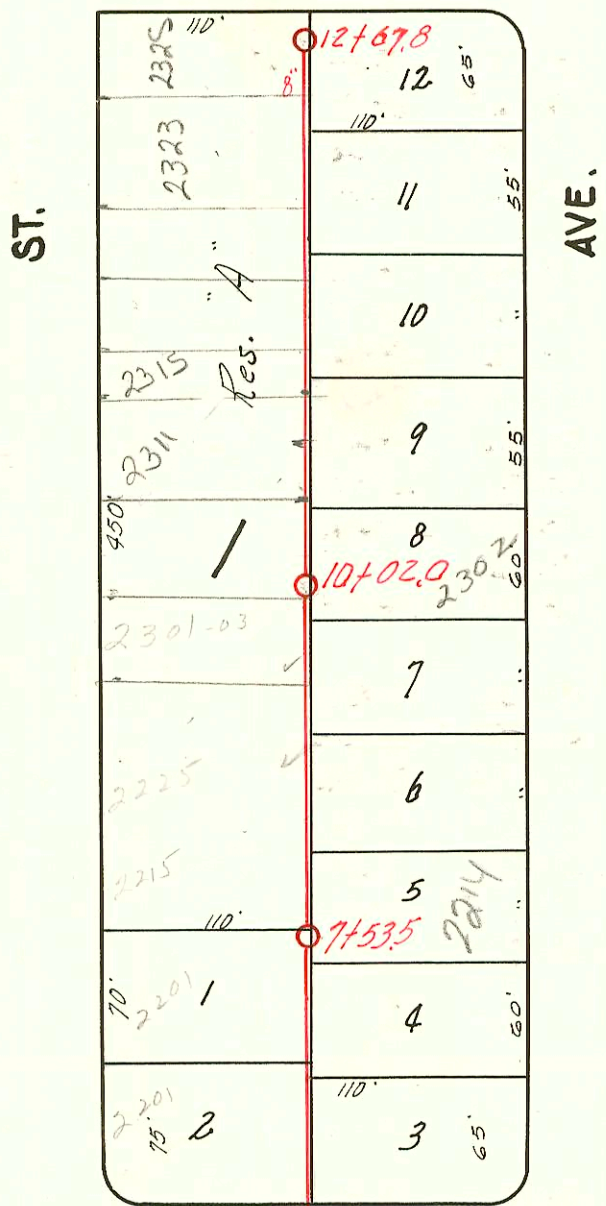
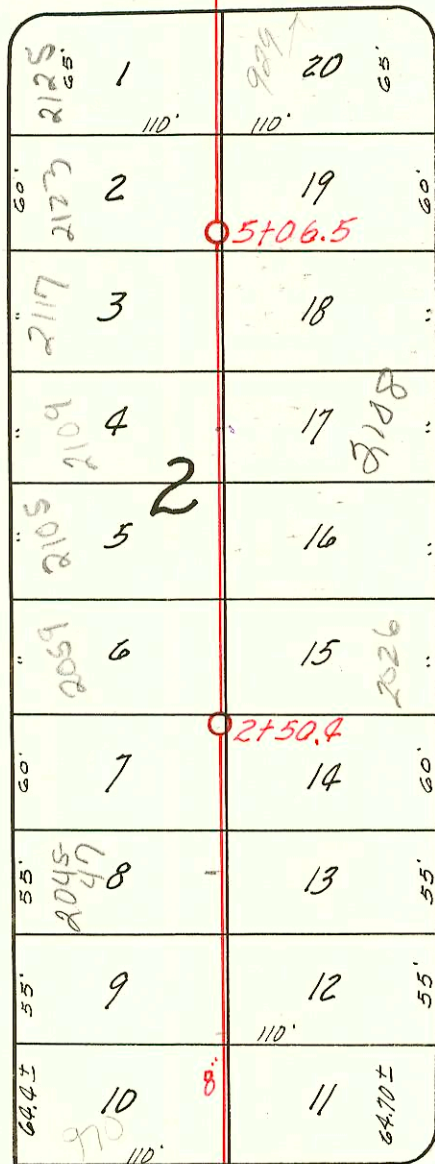


GROVE ST.



MADISON AVE.



PIATT AVE.

N
W
E
S



NINTH

MOSSMAN

DIST. S, S. S. N° 12

W. B. CARTER- 1941

CONSTRUCTION RECORD							SERVICE RECORD					
STATION	ELEVATION		Depth	MANHOLE	4-INCH "Y" BRANCHES		No. of Permit		House Number		DATE OF PERMITS	
	Ground	Grade			North West	South East	North West	South East	North West	South East	North West	South East
0+0	114.20	107.50	6.70	0+0								
					0+25.4	0+28.4						
					0+56.0	0+59.0						
					0+89.0	0+92.0						
1+0	115.20	107.60	7.60		1+16.2	1+19.2	#1029		2037 E. 9th	2002 Massman	6-19-42	3-31-42
					1+43.3	1+46.3			2037 E. 9th	2003 S. Massman	6-19-42	7-23-42
					1+69.5	1+72.5			2037 E. 9th	2014 E. Massman	2-10-42	6-21-42
					1+99.6	2+02.6			2045 E. 9th	2014 E. Massman	2-21-42	12-15-41
2+0	115.50	107.70	7.80		2+30.0	2+33.0	#1343		2020 E. 9th	2021-53 E. 9th	3-30-42	12-15-41
	115.55	107.75	7.80	2+50.4								
					2+60.3	2+63.3			2026 E. 9th	2026 E. Massman		10-1-43
					2+89.3	2+92.3			2037 E. 9th	2037 E. Massman	4-18-42	12-15-41
3+0	115.80	107.80	8.00		3+19.7	3+22.7	#687		2102 E. 9th	2102 E. Massman		12-1-41
					3+46.8	3+49.8	#1092		2115 E. 9th	2115 E. Massman	2-27-42	12-1-41
					3+79.3	3+82.3			2108 E. 9th	2108 E. Massman	2-27-42	5-2-42
4+0	115.90	107.90	8.00		4+07.0	4+10.0	#1077		2112 E. 9th	2112 E. Massman	2-27-42	1-31-46
					4+39.5	4+42.5			2117 E. 9th	2117 E. Massman	2-21-41	11-25-41
					4+69.2	4+72.2	#1074		2120 E. 9th	2120 E. Massman	2-21-41	11-25-41
5+0	116.50	108.00	8.50		4+97.2	5+00.2						
				5+06.5								
					5+27.2	5+30.2	#870		2121 E. 9th	2121 E. Massman	5-31-42	1-15-42
					5+57.2	5+60.2			2126 E. 9th	2126 E. Massman		4-30-41
					5+96.0	5+99.0	#3403		2125 E. 9th	2125 E. Massman	4-30-41	4-30-41
6+0	116.50	108.10	8.40		6+83.7	6+86.7						
7+0	117.00	108.20	8.80		7+25.0	7+16.0	#1296		2203 E. 9th	2202 E. Massman	3-25-42	4-30-41
		108.25		7+53.5		4" Stub			2208 E. 9th	2208 E. Massman		4-30-41
					7+60.7	7+82.2						
8+0	117.50	108.30	9.20		8+01.0		#3399		2209 E. 9th	2209 E. Massman	4-30-41	4-30-41
					8+10.0	8+13.0			2214 E. 9th	2214 E. Massman	4-30-41	4-30-41
					8+40.0	8+43.0	#562		2213 E. 9th	2213 E. Massman	3-28-46	4-30-41
					8+69.5	8+72.5			2220 E. 9th	2220 E. Massman		4-30-41
					8+96.2	8+99.2	#854		2225 E. 9th	2225 E. Massman		5-7-41
9+0	118.20	108.40	9.80		9+29.5	9+32.5	#3449		2226 E. 9th	2226 E. Massman		5-7-41
					9+59.5	9+62.5			2225 E. 9th	2225 E. Massman	7-15-46	7-28-46
					9+90.0	9+93.0	#2235		2302 E. 9th	2302 E. Massman	11-1-49	5-7-41
10+0	119.20	108.50	10.70		10+17.7	10+20.7						
				10+02.0								
					10+50.6	10+53.6	#896		2311 E. 9th	2308 E. Massman	11-7-46	5-7-41
					10+75.0	10+78.0	#2000		2315 E. 9th	2315 E. Massman	12-31-49	5-7-41
11+0	119.10	108.60	10.50		11+05.4	11+08.4	#3446		2314 E. 9th	2314 E. Massman	2-16-46	5-7-41
					11+29.0	11+32.0	#2639		2317 E. 9th	2317 E. Massman	2-11-46	5-7-41
					11+59.4	11+62.4	#3445		2320 E. 9th	2320 E. Massman		5-7-41
					11+85.6	11+88.6						
12+0	119.40	108.70	10.70		12+14.7	12+17.7	#3444		2326 E. 9th	2326 E. Massman		5-7-41
					12+41.4	12+44.4	#2327		2325 E. 9th	2325 E. Massman	4-19-46	7-10-45
	119.40	108.77	10.63	12+67.8								

S/O 2000-00783-2221 E 9th - HD Mills - S/O NO MEASUREMENT 3/31/00
 Top - #62 - 2323 E. Ninth - 5-8-46 - U. E. Lansdowne 96-5679-7 S/O 38' W of EPL

Finished