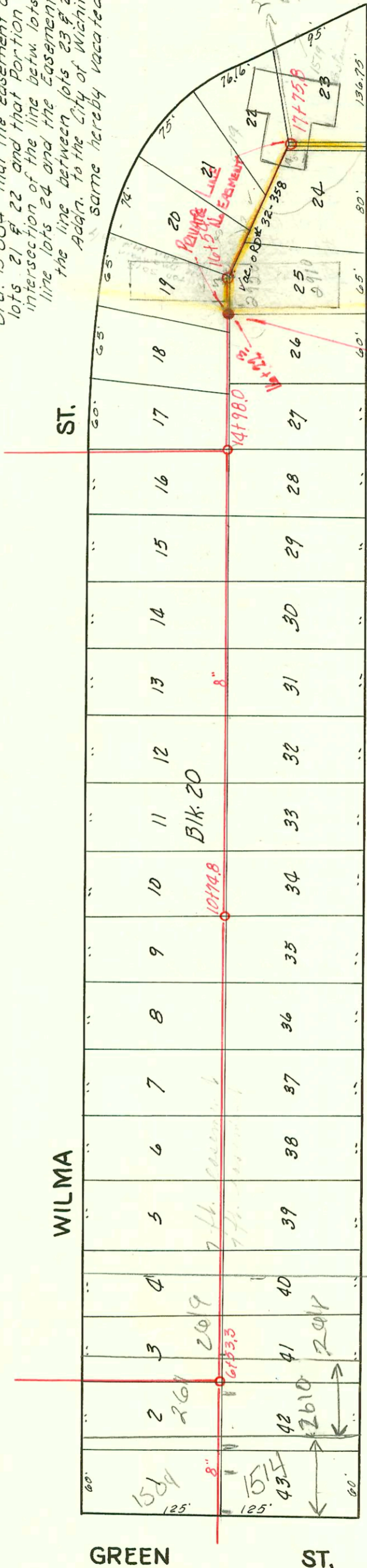




Ord. 15-334 That the easement along the rear 7feet of lots 21 & 22 and that portion of lot 24 lying W. of the intersection of the line betw. lots 20 & 21 with the rear line lots 24 and the easement 5' wide on either side of the line between lots 23 & 24 all in Schwietz's 9th Addn. to the City of Wichita, Kansas be and the same hereby vacated. Sept. 21, 1948



2004-00289 219104 1514 S Green - Overnight - 4" PVC, 1122, 1V45, deep - city wye repair 4" Predco 84.5' W of MH 6153.3 (5768R) full replacement
 2004-00290 219104 1514 S Green - Overnight - City Wye repair 85.8' W of MH 6153.3 (576711) basement, replace from house to City Lateral - 4" Predco by City - 4" PVC, 1V22

#580 - Tap - 2833 Wilma - 5-5-43 - Brodie Plbg. Co.
 #581 - Tap - 2834 E. Harry - 5-5-43 - Brodie Plbg. Co.

DIST. 9, S. S. # 12

W. B. CARTER 1942

CONSTRUCTION RECORD						SERVICE RECORD						
STATION	ELEVATION		Depth	MANHOLE	4-INCH "Y" BRANCHES		No. of Permit		House Number		DATE OF PERMITS	
	Ground	Grade			North West	South East	North West	South East	North West	South East	North West	South East
5+0	100.40	94.25	6.15									
					5+36.9	5+39.9	2004	2004	1504	see next pg	2-9-44	2-9-44
					5+67.6	5+70.6	00090	00289	Green	1518 Green		
6+0	99.80	94.40	5.40		5+94.2	5+97.2	360	361	2611	2610	2-9-44	2-9-44
				6+53.3	6+28.5	6+31.2			Wilma E. Harry	E. Harry	3-29-43	3-29-43
					6+58.7	6+61.7			see above			
7+0	99.70	94.55	5.15		6+85.8	6+88.8	374	375	2619	2618	2-9-44	2-9-44
					7+16.0	7+19.0			Wilma	Harry	3-31-43	3-31-43
					7+47.5	7+50.5						
8+0	100.00	94.70	5.30		7+77.2	7+80.2	393	394	2627	2626	4-2-43	4-2-43
					8+08.1	8+11.1			Wilma	Harry		
					8+38.4	8+41.4						
					8+68.6	8+71.6						
					8+98.2	9+01.2						
9+0	100.00	94.85	6.15		9+29.5	9+32.5	405	406	2729	2710 E.	4-6-43	4-6-43
					9+59.7	9+62.7			Wilma	Harry		
					9+87.5	9+90.5						
10+0	100.30	95.00	5.30		10+17.5	10+20.5						
					10+48.3	10+51.3						
				10+74.8								
11+0	100.50	95.15	5.35		10+78.8	10+81.8	430	432	2725-27-27	2725-25-27	4-13-43	4-13-43
					11+09.0	11+12.0			31 Wilma	31 E. Harry		
					11+39.5	11+42.5						
					11+67.2	11+70.2						
					11+97.3	12+00.3						
12+0	101.10	95.30	5.80		12+24.2	12+27.2	522		2301	Wilma	4-21-43	
					12+58.0	12+61.0						
					12+85.9	12+88.9						
13+0	101.20	95.45	5.75		13+15.9	13+18.9						
					13+46.0	13+49.0						
					13+77.1	13+80.1						
14+0	101.50	95.60	5.90		14+07.3	14+10.3						
					14+37.4	14+40.4						
					14+64.7	14+67.7						
					14+88.9	14+91.9						
				14+98.0								
15+0	101.40	95.75	5.65		15+26.1	15+29.1						
					15+56.5	15+59.5						
					15+86.3	15+89.3	582	582	2901	2902	5-5-43	5-5-43
16+0	101.50	95.90	5.60		16+17.2	16+20.2			Wilma	E. Harry		
				see above	16+44.5	16+47.5			610	2916	6-1-71	
				16+22.3	16+44.5	16+47.5			2910	cap	6-11-52	
					16+54.8	16+83.8			E. Harry			
					16+99.0							
17+0	101.80	96.05	5.75		17+16.2		7251		1519	Geo Wash.	10-19-48	
					17+28.2							
					17+41.2							
					17+55.4							
					17+68.6							
	101.80	96.18	5.62	17+75.8	Stub So.	Stub SE.	65		1519	Geo Wash.	5-25-48	
							C38976		Replaced 8" main - private		5-12-73	
									line east of 16+22.3		See Below	

97-5396-7 4-4-47 2910 E Harry - Retail space - Roof plbs
 97-5395-7 4-9-47 2910 E Harry - Laundry - Roof plbs

97-2030-7 2-13-47 1519 S. Geo. Wash Bl. Utility Maint Contn - Repair

C42650-2920 E. Harry - (Laundry) 12-10-73 - Gerald Thompson (M.H. tap in 16+22.3)

- #403 - Tap - 2701 Wilma - 4-8-43 - Brodie Pkg. Co.
- #404 - Tap - 2782 E. Harry - 4-6-43 - Brodie Pkg. Co.
- #429 - Tap - 2711-19-21-23 - Wilma - 4-13-43 - Brodie Pkg. Co.
- #431 - Tap - 2718-20-22-24 E. Harry - 4-13-43 - Brodie Pkg. Co.
- #520 - Tap - 2733 Wilma - 4-21-43 - Brodie Pkg. Co.
- #521 - Tap - 2754 E. Harry - 4-21-43 - Brodie Pkg. Co.
- C24621/B2120 - Tap - 2910 E. Harry - Inst. J.C. Lewis 10-12-64 (Tap 16+36)
- #523 - Tap - 2831 E. Harry - 4-21-43 - Brodie Pkg. Co.
- #544 - Tap - 2307 Wilma - 4-29-43 - Brodie Pkg. Co.
- #525 - Tap - 2810 E. Harry - 4-29-43 - Brodie Pkg. Co.
- #528 - Tap - 2825 Wilma - 5-5-43 - Brodie Pkg. Co.
- #579 - Tap - 2826 E. Harry - 5-5-43 - Brodie Pkg. Co.
- #546 - Tap - 2317 Wilma - 4-29-43 - Brodie Pkg. Co.
- #539 - Tap - 2813 E. Harry - 4-29-43 - Brodie Pkg. Co.