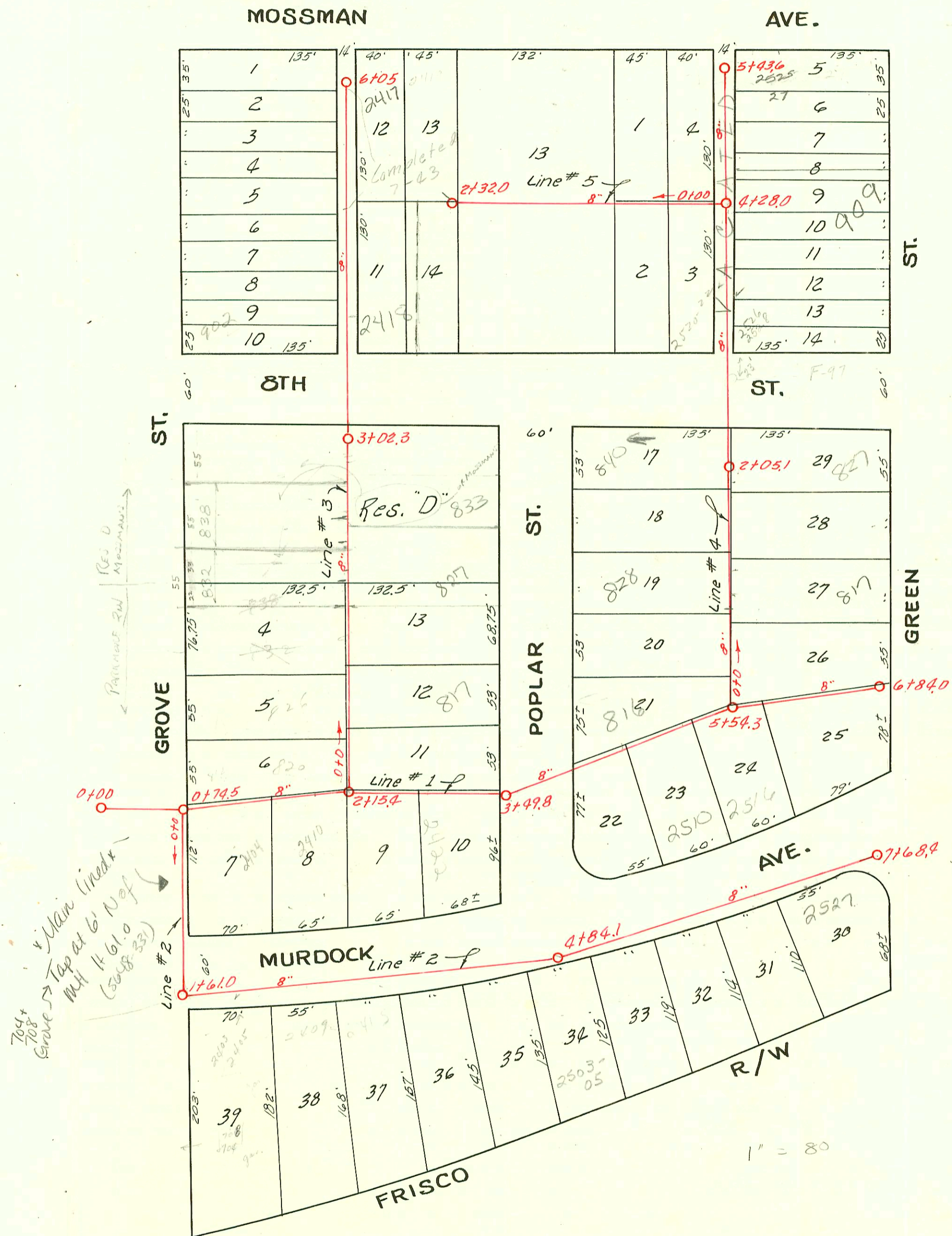


EASEMENT, Made May 5, 1943; filed June 21, 1943 Instrument No 51205 (1662).
From Merle D. and Alta Parker. For all public utilities.

The 6.160' of the land formerly platted as an alley in the rear of lots 8 to 14, odd and even inclusive, Green St., Munsell's Subdivision of Mosson's Addition to the City of Wichita.



LAT. M, DIST. E, S. S.# 12
W. B. CARTER, 1942

